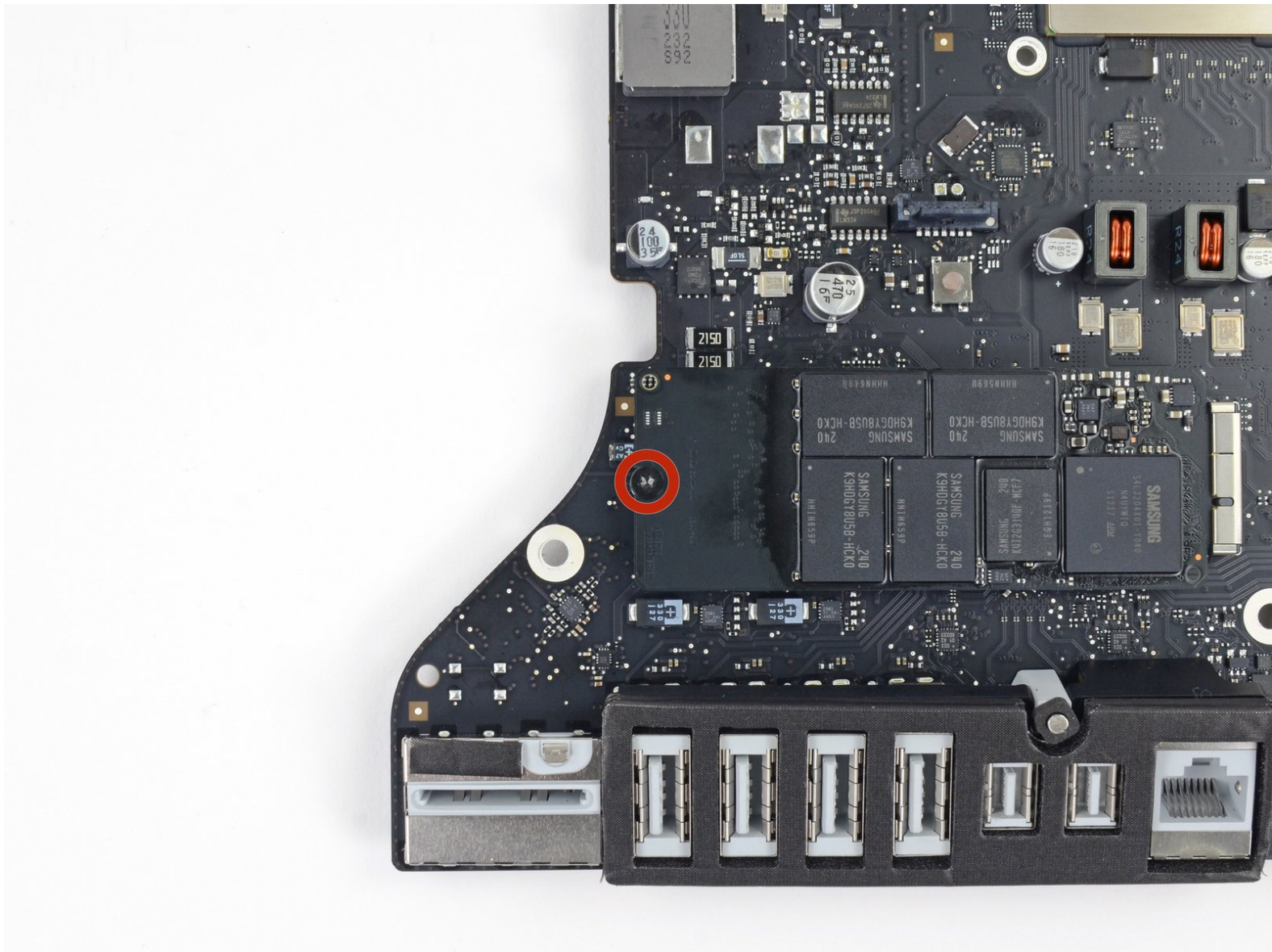




# iMac Intel 27" EMC 2546 SSD Replacement

prerequisite for logic board, after AirPort and before PSU cable.

Written By: Andrew Optimus Goldheart

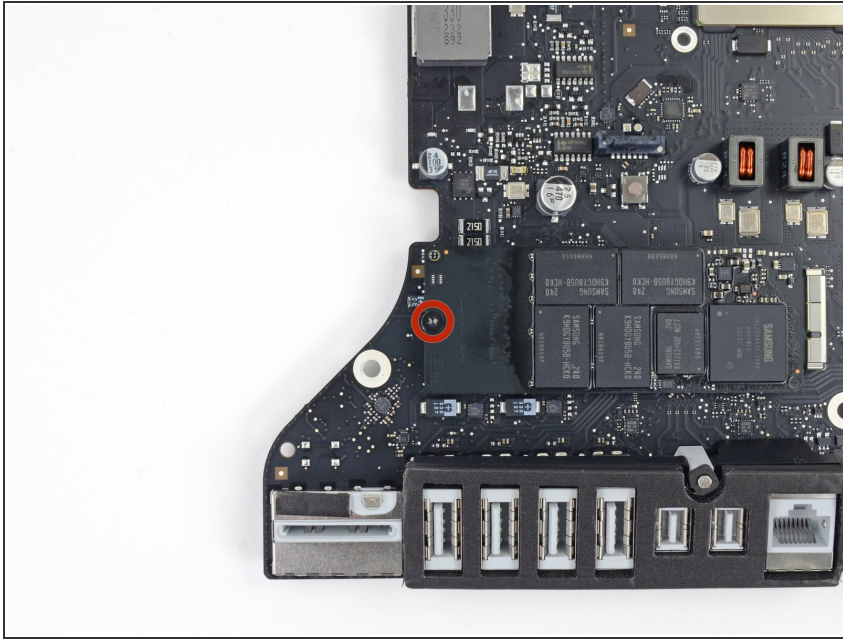




## TOOLS:

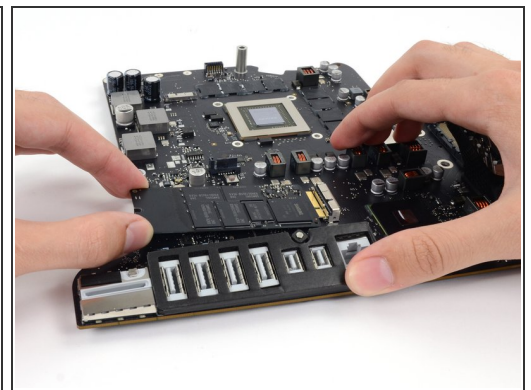
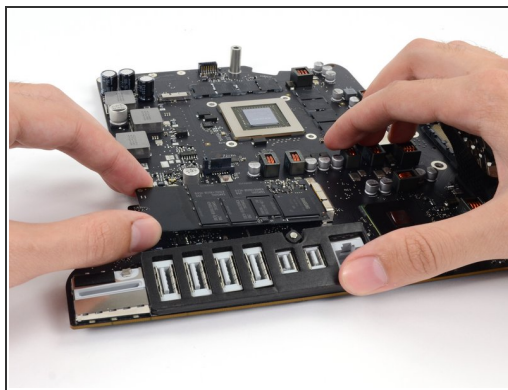
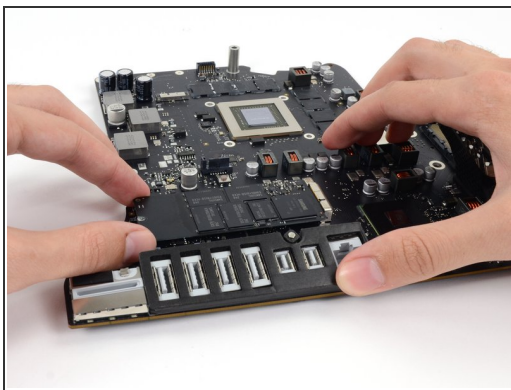
- [T8 Torx Screwdriver](#) (1)
-

## Step 1 — SSD



- Remove the single 5.3 mm T8 screw securing the SSD to the logic board.

## Step 2



⚠ To avoid damaging its socket, do not lift the end of the SSD excessively.

- Lift the end of the SSD up slightly and pull it straight out of its socket on the logic board.
- ☑ When reinstalling the SSD, be sure it is properly seated before reinstalling its retaining screw.

To reassemble your device, follow these instructions in reverse order.