



Fairphone 4 Screen Replacement

Use this guide to replace a broken or defective...

Written By: Manuel Haeussermann



INTRODUCTION

Use this guide to replace a broken or defective screen on your Fairphone 4.

TOOLS:

1 x Opening Picks (1)
Phillips #00 Screwdriver (1)

PARTS:

Fairphone 4 Display (1)

Step 1 — Pry the back cover up



 Be sure to power off your phone before you begin.

- Insert your thumbnail, or a prying tool like a spudger, into the notch at the bottom right of the back cover.
- Pry the back cover up to start separating its plastic clips.

Step 2



- Using your thumbnail or an opening pick, slide along the right side of the phone to loosen the plastic clips.

Step 3



- Slide along the bottom of the phone to loosen the plastic clips.

Step 4



- Slide along the left side of the phone to loosen the plastic clips.
 - Lift the back cover to release the rest of the plastic clips and remove it.
- ⓘ To reinstall the back cover press it firmly into place until you hear a snap from the plastic clips.

Step 5 — Lever up the Battery



- Use a fingernail or a prying tool at the marked notch to lever the battery out of its recess.
- Lift the battery out of its recess and remove it.
- Remove the battery.

Step 6 — Unscrew the display



- Remove the eight 4.8 mm-long Phillips screws.

Step 7 — Create a gap



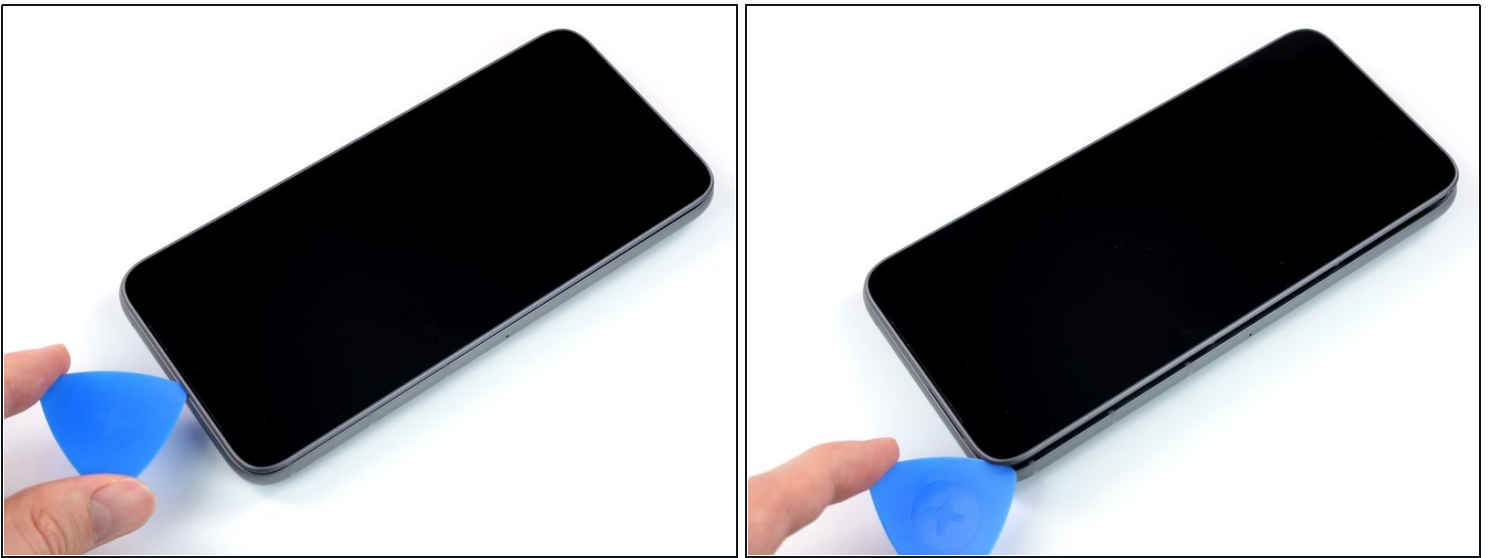
- Flip the phone over so the screen faces up
- Insert an opening pick between the screen and the frame.

Step 8 — Slide along the edge



- Slide the opening pick along the edge to the top right corner.

Step 9



- Continue to slide the opening pick along the top of the phone.

Step 10



- Slide the opening pick along the left side to the bottom left corner.

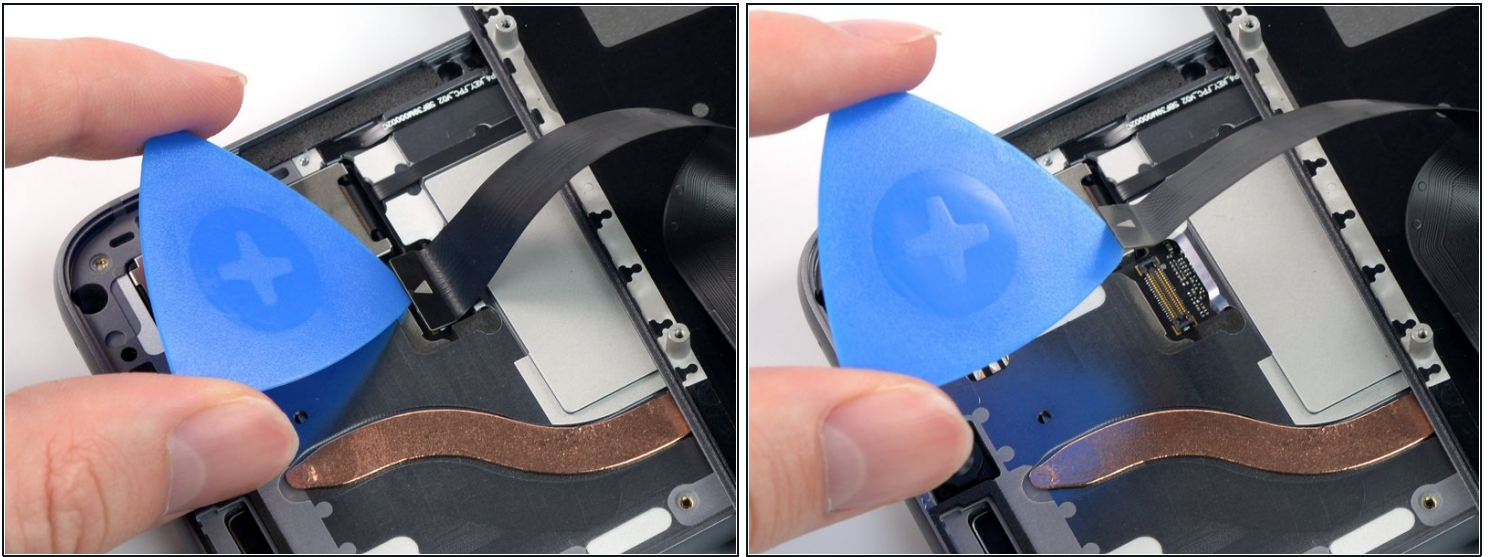
Step 11 — Flip the screen over



⚠ Do not remove the screen yet. It's still connected to the phone with a connection cable.

- Grab the screen and lift it straight up just enough to clear its pegs from the frame.
- Rotate the display carefully clock-wise and flip it over to get access to the connector.
- Place the display on the device with the screen facing downwards.

Step 12 — Disconnect the cable



- Use an opening pick to pry up and disconnect the display connection cable.
 - Remove the screen.
- ☒ Compare your new replacement screen to the original part—you may need to remove a front camera dust cover before you install it.
-

To reassemble your device, follow these instructions in reverse order.

Take your e-waste to an [R2 or e-Stewards certified recycler](#).

Repair didn't go as planned? Try some [basic troubleshooting](#), or ask our [Answers community](#) for help.