

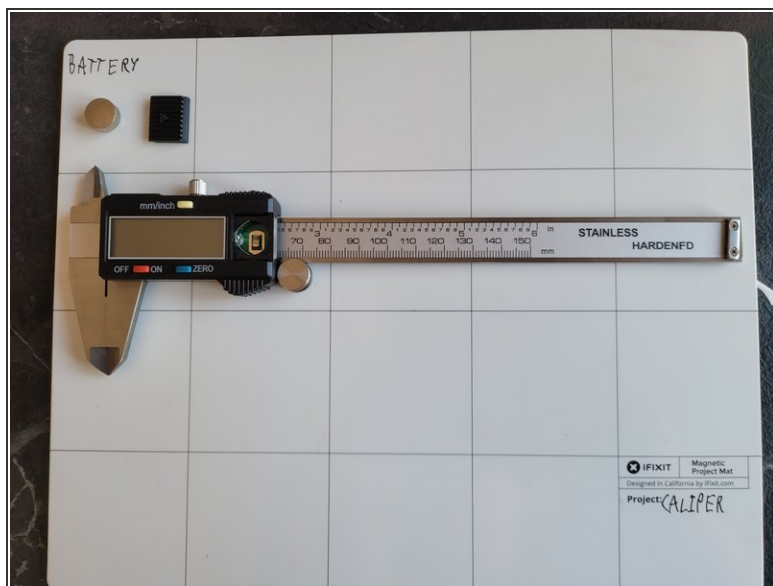
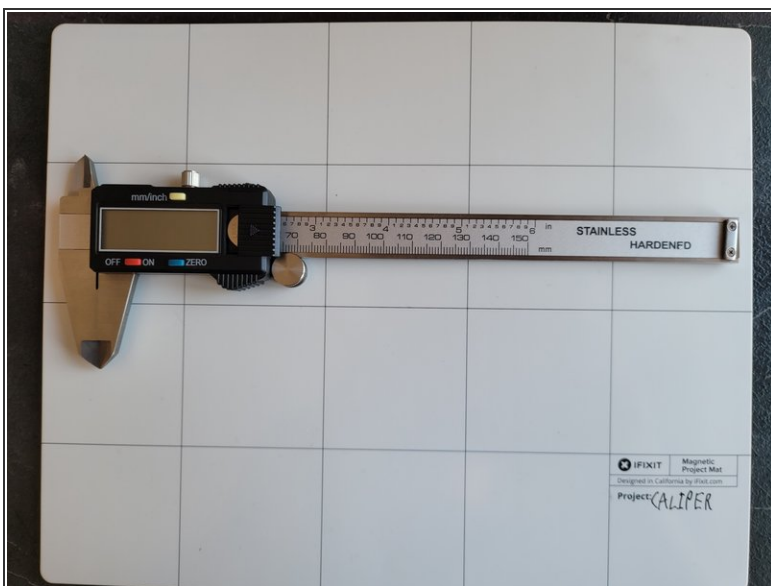


# Digital Caliper Teardown

Written By: Sebastian Vester

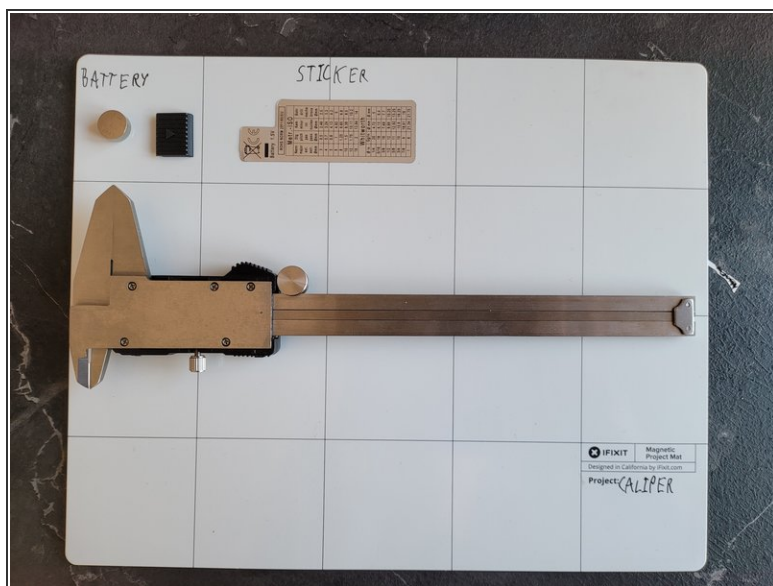
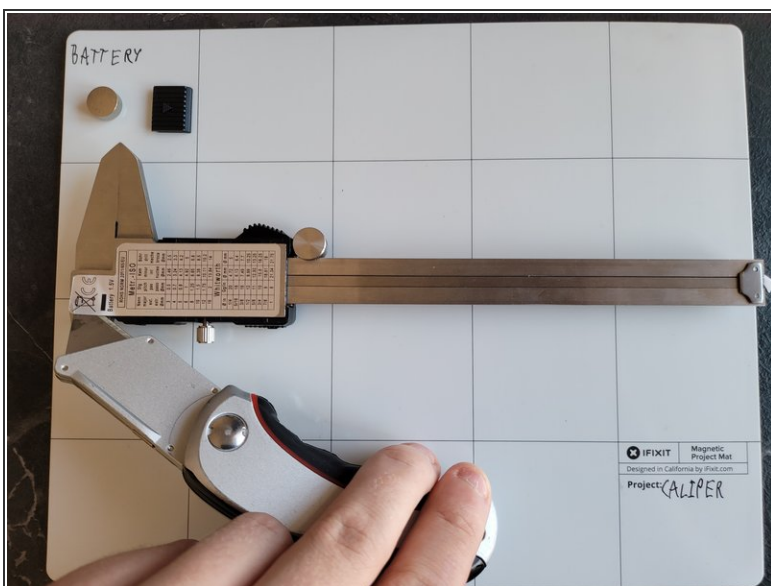


## Step 1 — Remove Battery



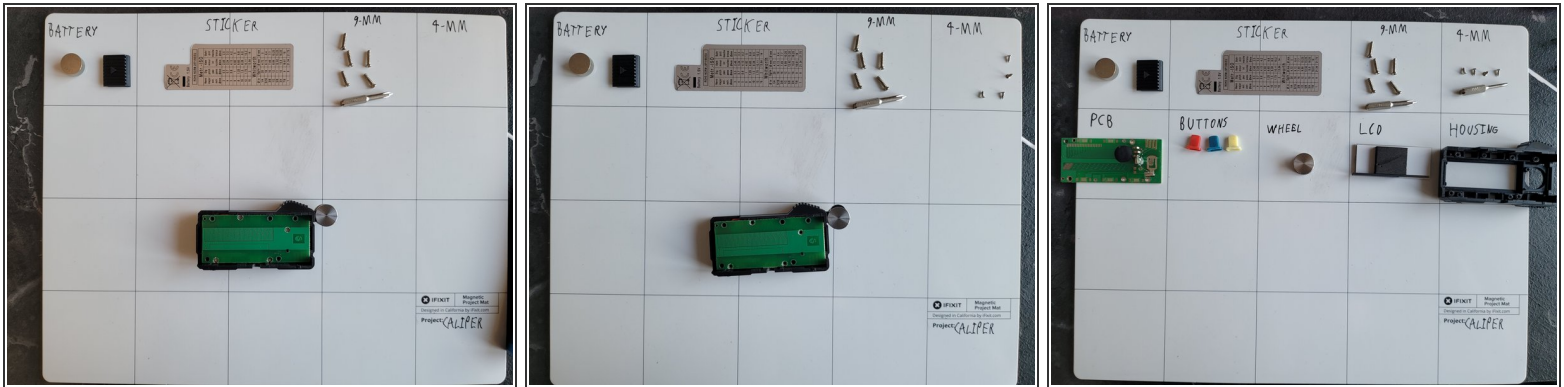
- Slide the battery compartment open.
- Pull out the battery.

## Step 2 — Screw out the housing



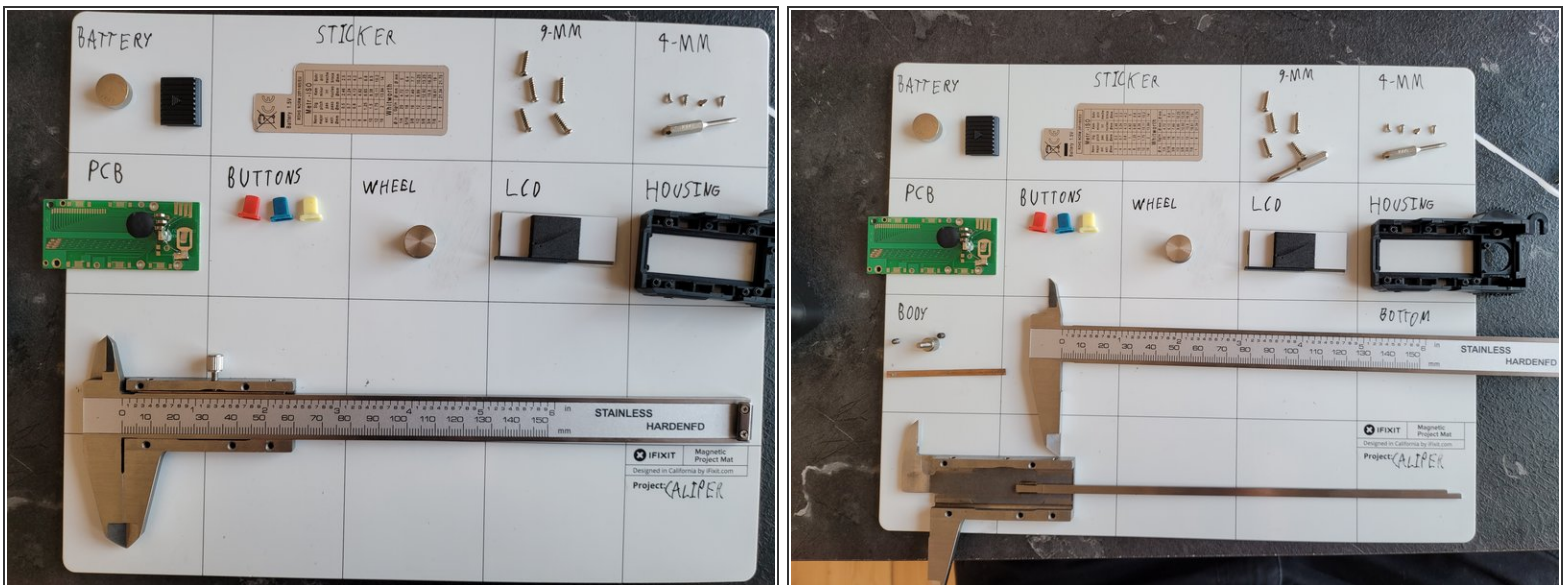
- Remove the sticker and place it on a clean sticker-friendly surface.
- Screw out the 9-mm screws using the J0 Bit.

## Step 3 — Housing dissassembly



- Screw out the 4-mm screws holding the PCB in place. Use the J000 bit.
- Now take out all the parts from the housing.

## Step 4 — Body



- Remove the right/bottom 6mm screws.
- Then the last 2 and the tightener screws. So you can pull it apart.

To reassemble your device, follow these instructions in reverse order.