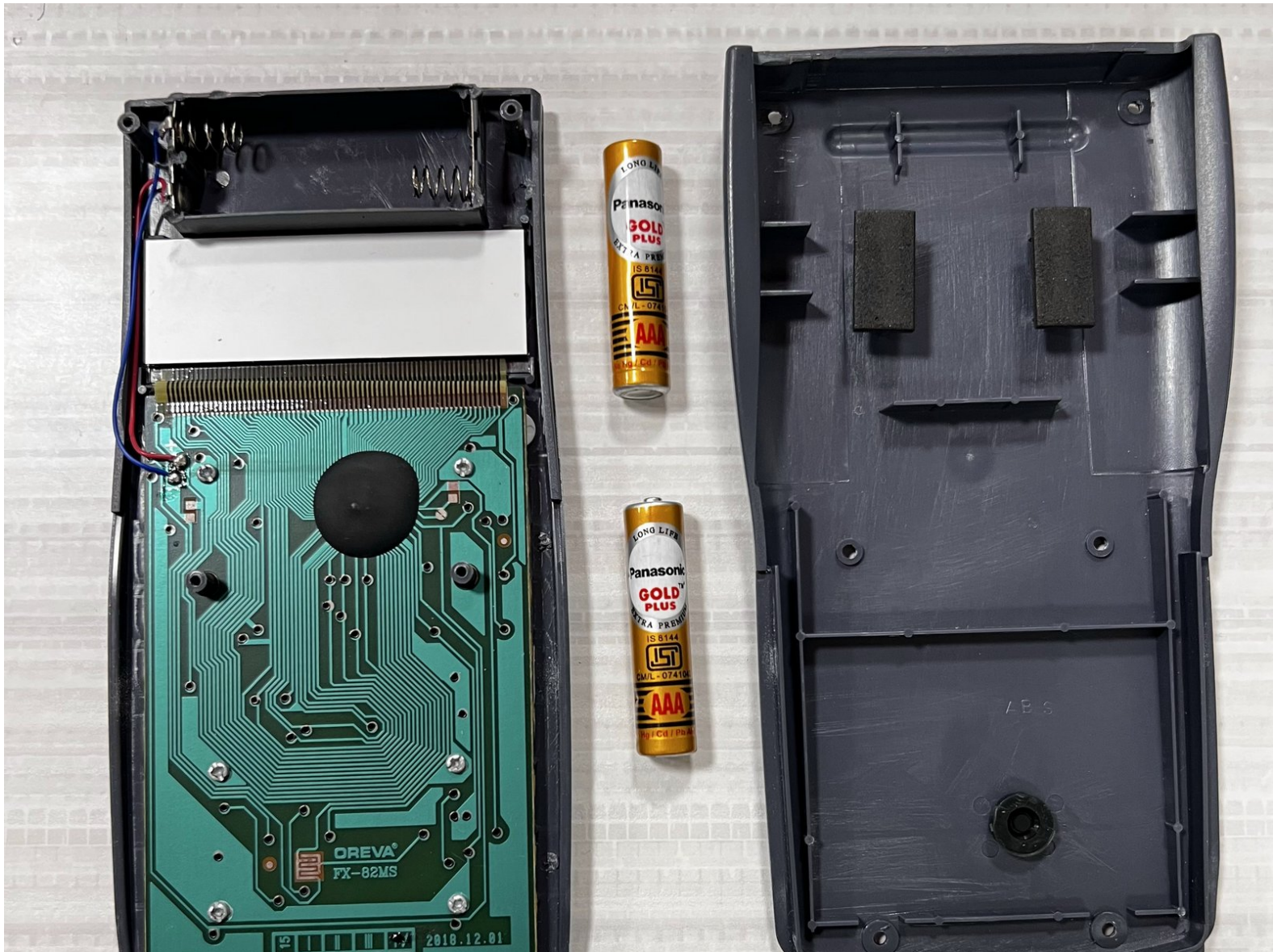




Oreva FX-82MS Battery Replacement

Written By: Prarthit patel



INTRODUCTION

This is an easy step-by-step guide to replace the battery of an Oreva FX-82MS scientific calculator.

The calculator battery may need to be replaced if the display is dim, there is uneven contrast, or if figures fail to appear right when the calculator is turned on. A dead battery can leak if it's left in the calculator, which may damage the calculator. Battery life is approximately three years, based on one hour per day of use.

Prior to replacing the battery, turn off the calculator. Also note the orientation of the battery for replacement. Lastly, avoid using a metal spudger, as it can cause damage.



TOOLS:

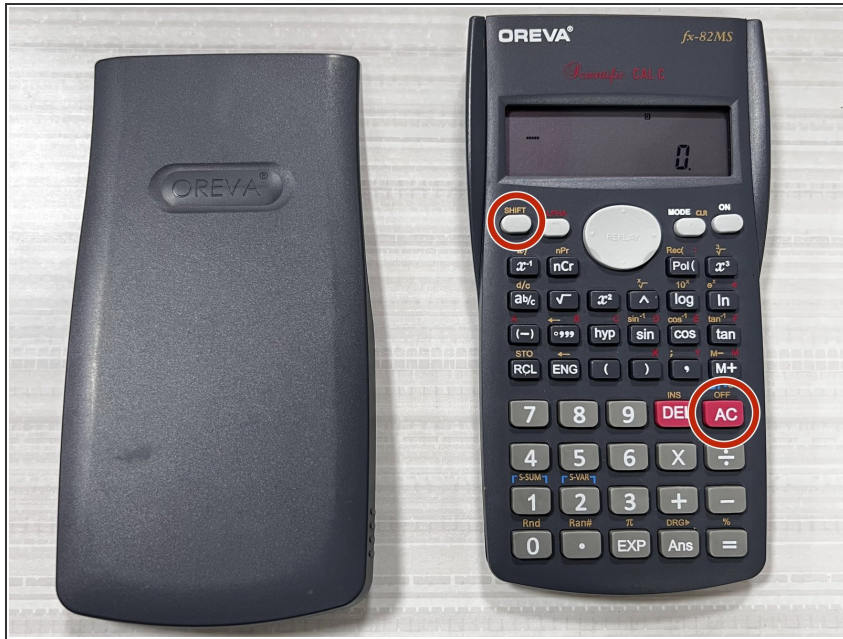
- [Phillips #0 Screwdriver](#) (1)



PARTS:

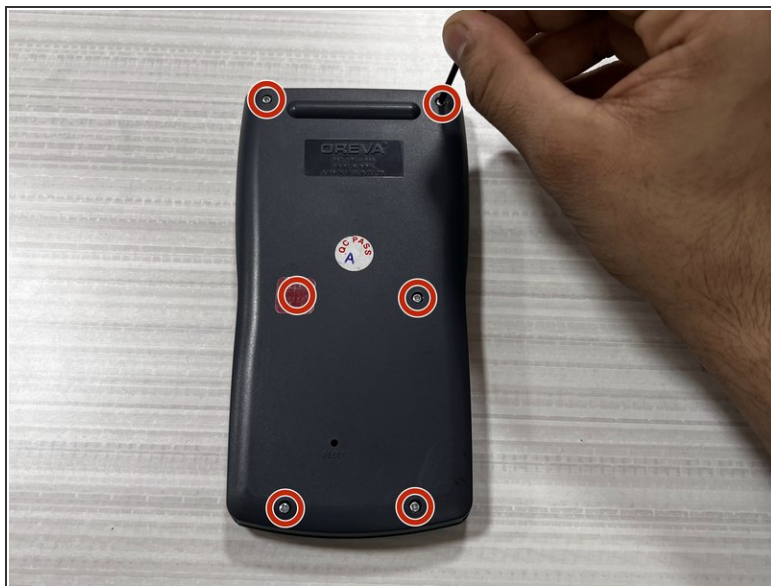
- [AAA Battery](#) (2)

Step 1 — Battery



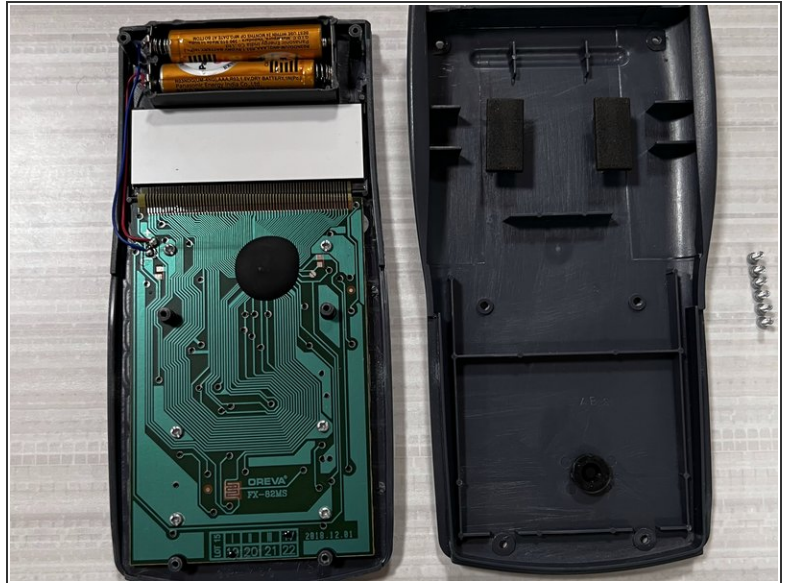
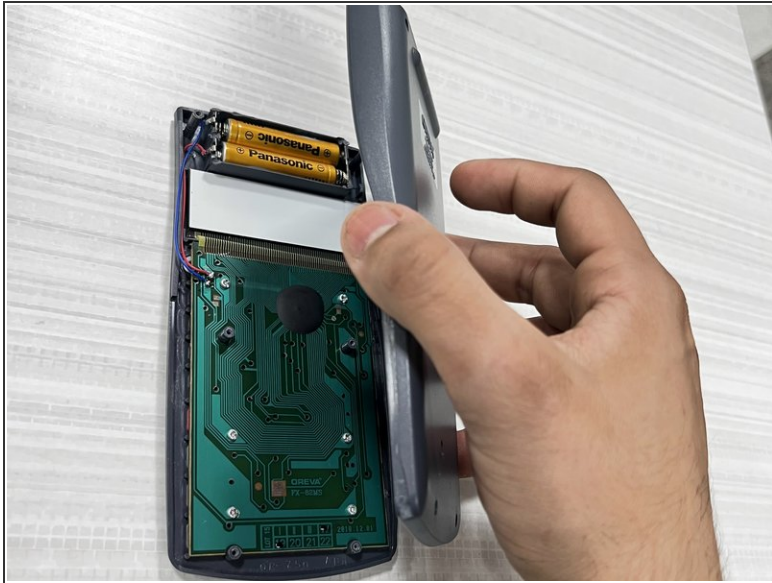
- Turn off the calculator by pressing the [Shift] button and then press the [AC][OFF] button, (while keeping the [Shift] button pressed down).

Step 2



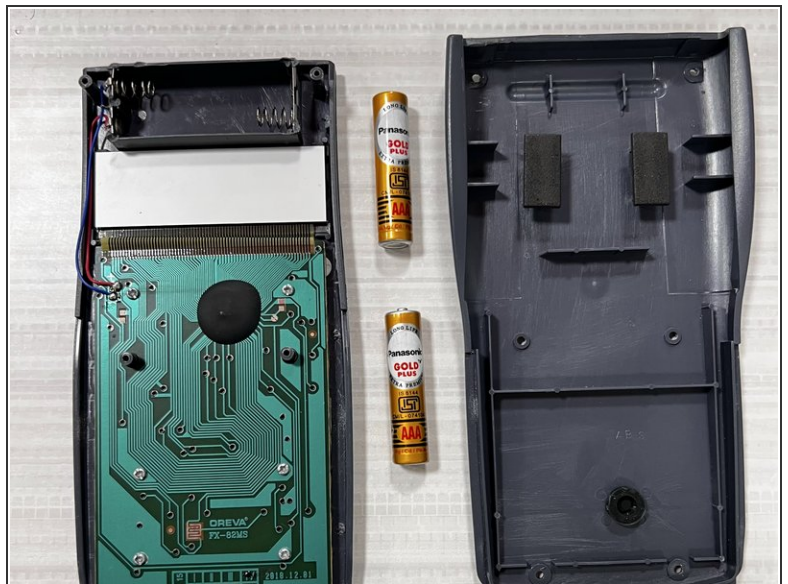
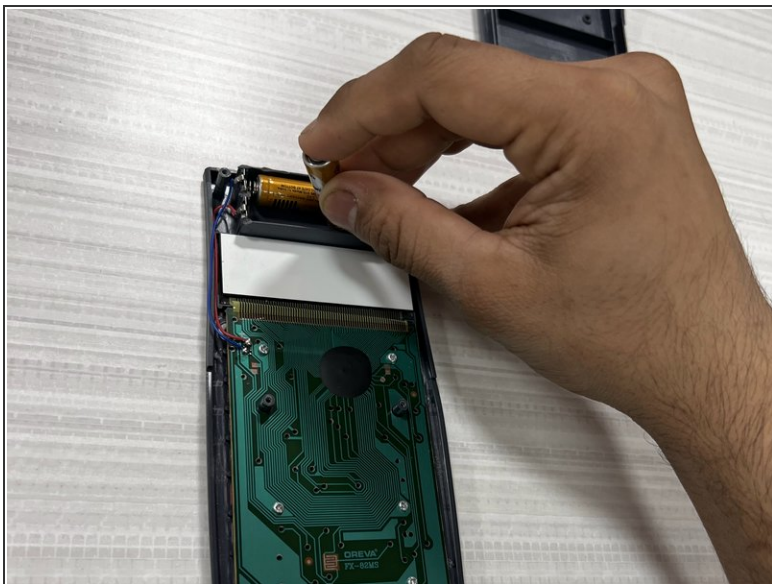
- Flip the calculator over so that the back panel faces up.
- Use a Phillips #0 screwdriver to remove six, 1.2 mm screws starting from the upper right corner.

Step 3



- Remove the back cover and put it to the side.

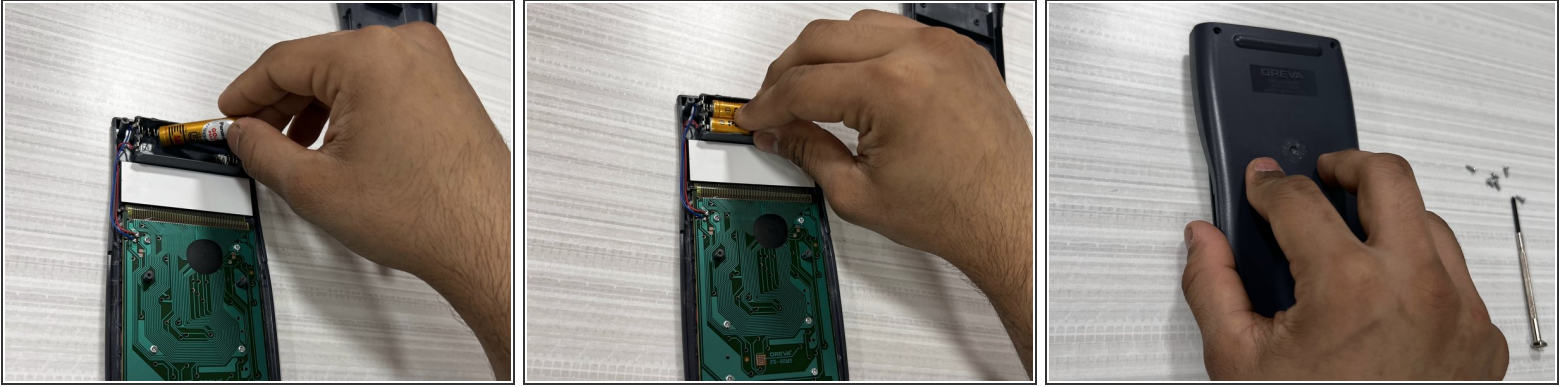
Step 4



- Remove the two old batteries from the slots.

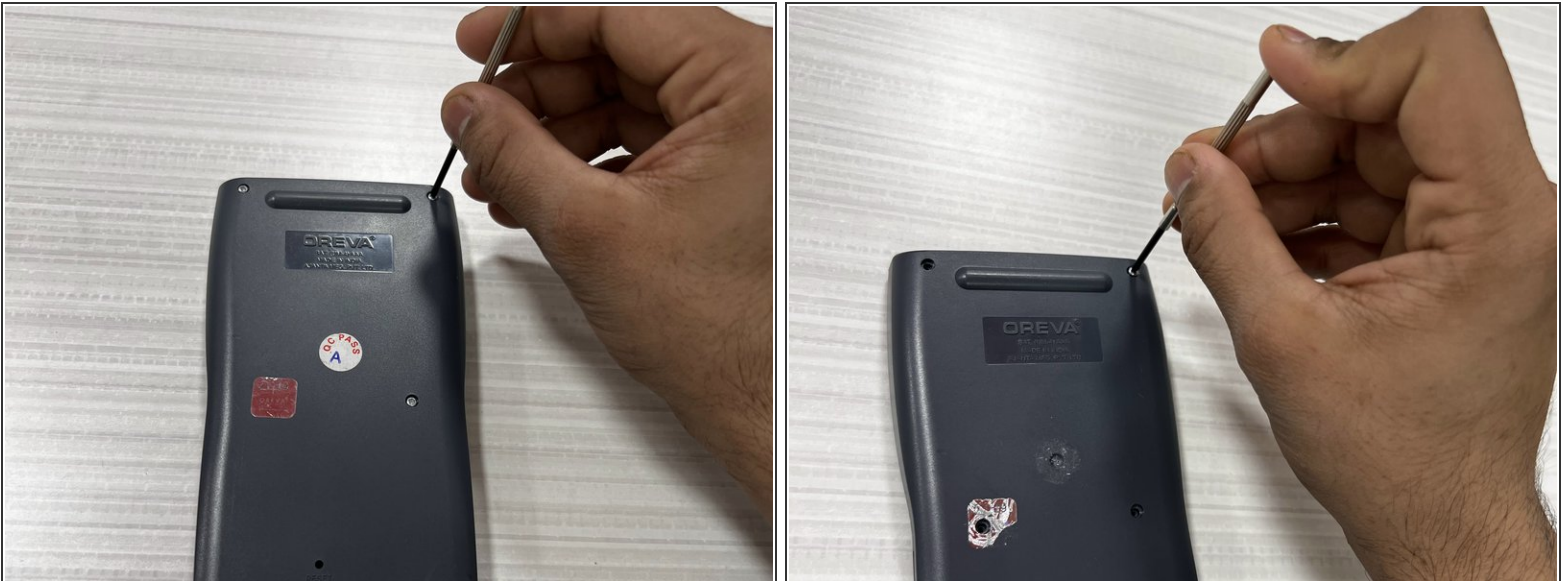
⚠ Be gentle when removing the batteries to avoid damaging the connectors.

Step 5



- ✦ Place the two new AAA batteries into the calculator, one by one.
- ⓘ Be sure that the direction of the + and - signs on your battery match the signs at the bottom of the battery compartment.
- Place the case on back of the calculator.

Step 6



- ✦ Use a Phillips #0 screwdriver to replace the 1.2 mm screws on the back case.

Step 7



- Reset the calculator by pressing [ON].
 - Press the [shift] button.
 - Press the [9] [CLR] button to clear the data.
 - Press the [3][ALL] button option.
 - Press [=] [yes] button to agree.
 - Press [AC] key to reset.

To reassemble your device, follow these instructions in reverse order.