



# EarStudio ES100 Battery Replacement

Written By: Maxime



## INTRODUCTION

Radson EarStudio ES100 is a Bluetooth high fidelity audio adapter. It's powered with a 3.7V 350mAh LIPO battery ref SL572035 (discontinued).

With time this battery may not work properly and prevent the adapter to be turned on. Replacement is quite easy and an alternative battery reference exists : 602035PL (with 500 mAh power)



### TOOLS:

- [iFixit Opening Tool](#) (1)



### PARTS:

- [New Item](#) (1)

Batterie

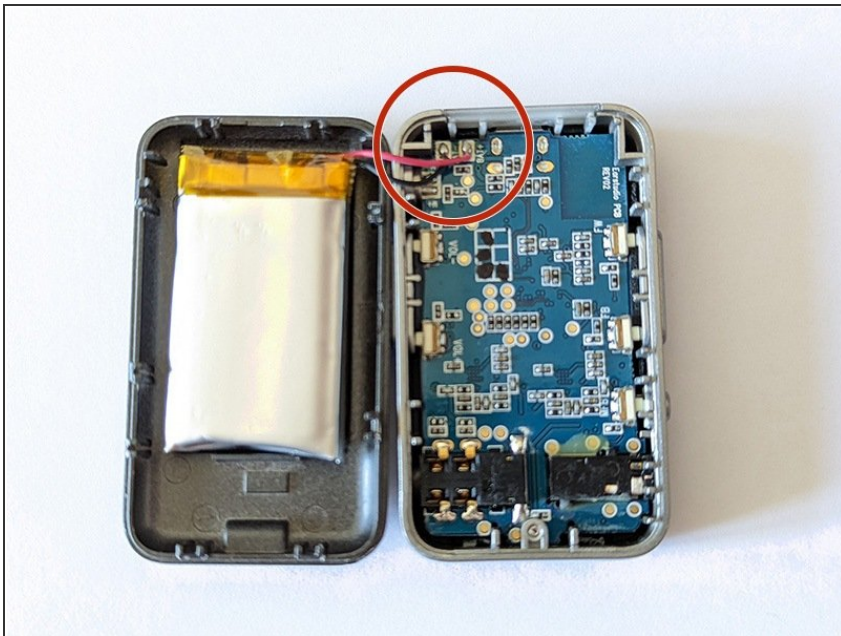
*Référence de remplacement de SL572035*

## Step 1 — Back panel removal



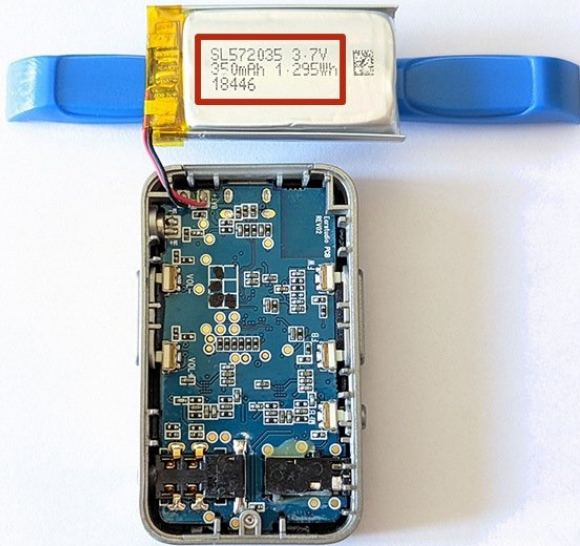
- To open the device, push hard on the back panel corner close to the 3.5mm jack with the iFixit opening tool. **Take care:** the back panel will open suddenly
- Gently push the pack panel up on all sides of the device

## Step 2 — Opening



- Flip the back panel aside the device. You can now access the battery cable you can safely desolder.

## Step 3 — Battery reference



- The original battery reference SL572035 is discontinued. You can replace it with an alternative battery reference, like the **602035** (3.7 V, 500 mAh) you can find and most spare part markets
- **Warning:** do not mismatch with the 602535 battery with a 600 mAh capacity but larger than the 500 mAh one (25 mm versus 20 mm). Make sure the battery size is approximately 20 x 35 x 6 mm.
- **Translation issue.** The part section of this article indicates the replacement battery is not available. Actually, it is. Link: <https://www.aliexpress.com/item/40010454...>

To reassemble the device, glue the battery on the original tape, put the back panel in place **making sure not to place it upside-down**. Push hard the back panel to clip it to the device main body on all sides. Proceed to a full charge before use.