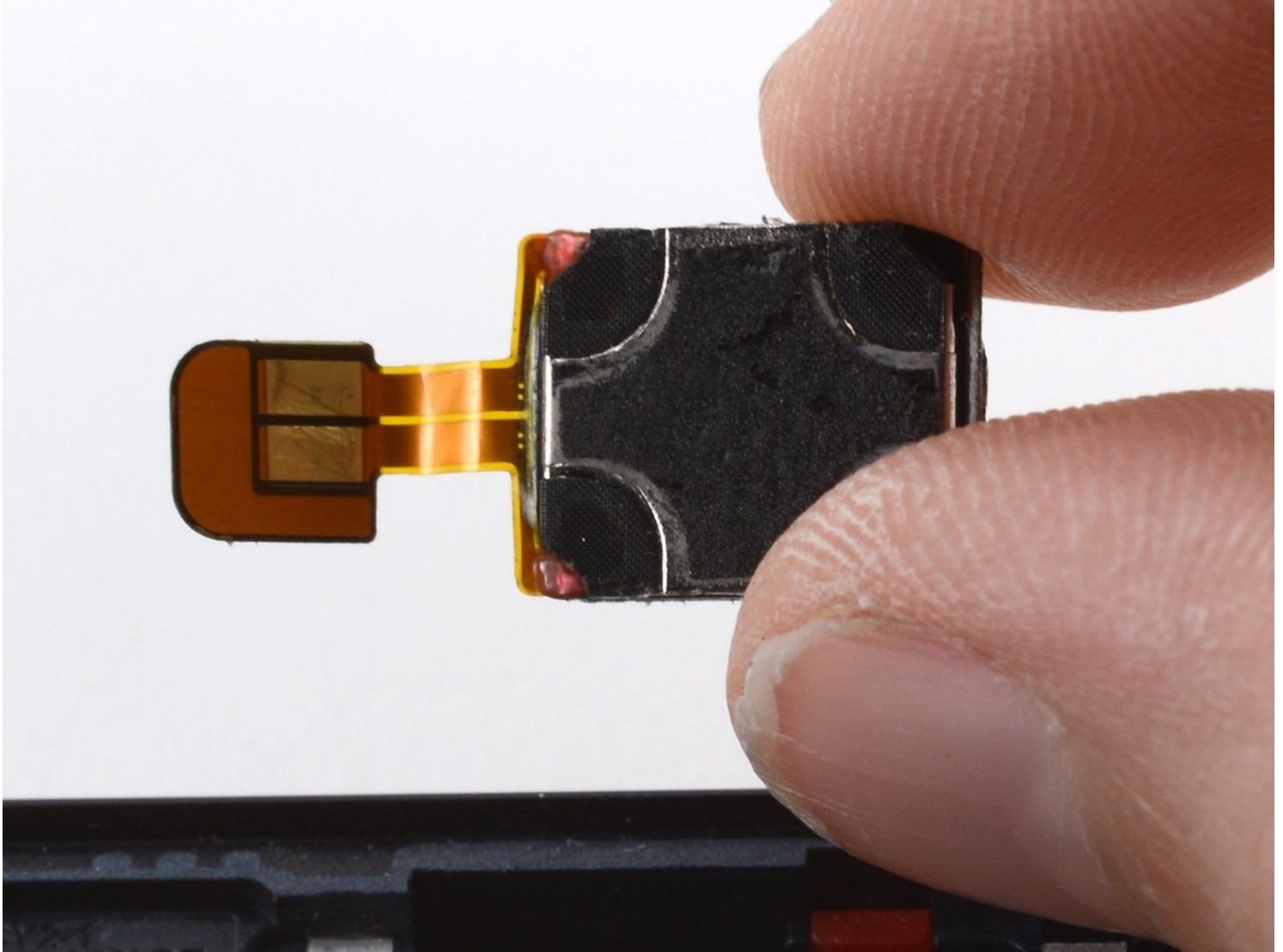




# Motorola Edge Earpiece Speaker Replacement

Follow this guide to remove and replace the...

Written By: Jennifer Berg



# INTRODUCTION

Follow this guide to remove and replace the earpiece speaker on a Motorola Edge.

Before you begin, download the [Rescue and Smart Assistant](#) app to backup your device and diagnose whether your problem is software or hardware related.

The cameras attached to the motherboard can be removed in any order.

**For your safety, discharge the battery below 25% before disassembling your phone.** This reduces the risk of fire if the battery is accidentally damaged during the repair. If your battery is swollen, [take appropriate precautions](#).

---

## TOOLS:

[SIM Card Eject Tool](#) (1)  
[iOpener](#) (1)  
[Suction Handle](#) (1)  
[iFixit Opening Picks \(Set of 6\)](#) (1)  
[T5 Torx Screwdriver](#) (1)  
[Spudger](#) (1)  
[Isopropyl Alcohol \(90% or Greater\)](#) (1)  
[ESD Safe Blunt Nose Tweezers](#) (1)  
[Coffee Filters or a lint-free cloth](#) (1)

## PARTS:

[Tesa 61395 Tape](#) (1)

---

## Step 1 — Find the SIM tray



- Find the SIM tray located at the top of the phone.

## Step 2 — Eject the SIM tray



- Insert a SIM eject tool or SIM eject bit into the small hole in the SIM card tray.
- ⓘ If the tool you're using doesn't fit, don't force it. Forcing a tool may cause it to get stuck or break inside the ejection port.
- Press to eject the tray.

## Step 3 — Remove the SIM card tray assembly



- Remove the SIM card tray from the phone.

## Step 4 — Heat the bottom edge



⚠️ Completely power off your phone before you begin.

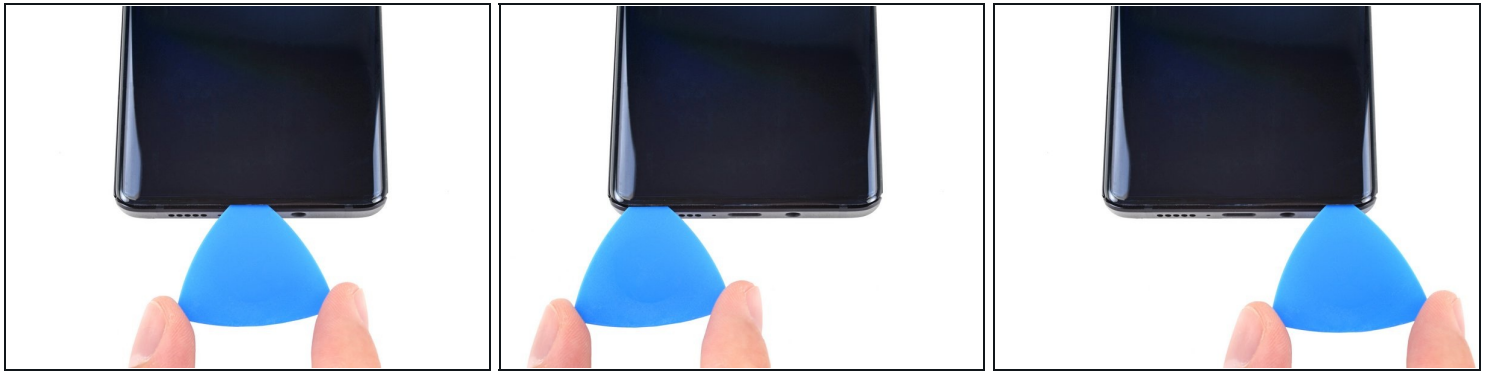
- [Heat an iOpener](#), then apply it along the bottom edge of the back cover for two minutes.
- ⓘ A hair dryer, heat gun, or hot plate may also be used, but be careful not to overheat the phone because the display and internal battery are both susceptible to heat damage.

## Step 5 — Separate the bottom adhesive



- Apply a suction cup to the back of the phone, as close to the center of the bottom edge as possible.
- Pull up on the suction cup with strong, steady force to create a gap between the back cover and the frame.
  - ⓘ Depending on the age of your phone, this may be difficult. If you're having trouble, apply more heat to the edge and try again.
- Insert an opening pick into the gap.

## Step 6 — Slice the bottom adhesive



- Slide the pick back and forth along the bottom edge to slice through the adhesive.
- Leave the pick in to prevent the adhesive from resealing.

## Step 7 — Heat the right edge



- Apply a heated iOpener to the back cover's right edge for two minutes.



## Step 8 — Separate the corner adhesive



- Rotate the opening pick around the bottom-right corner of the phone.

## Step 9 — Separate the right adhesive



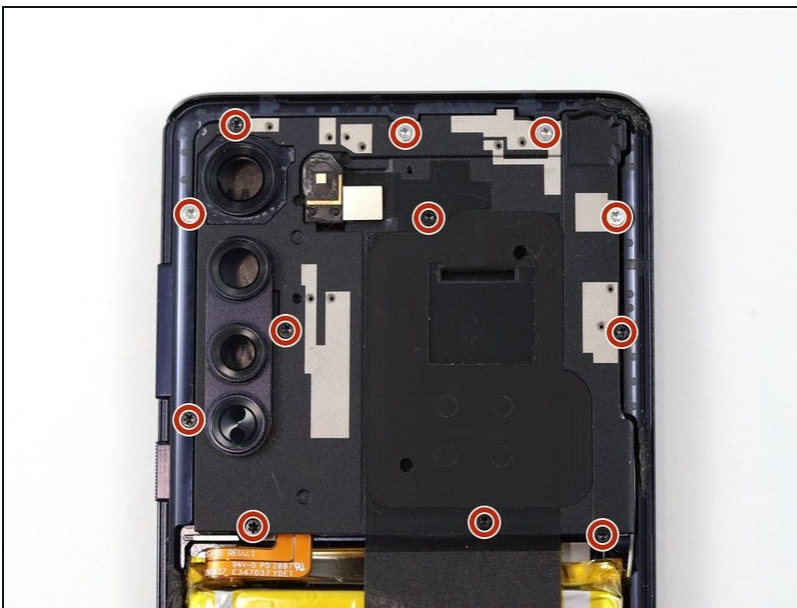
- Insert a new opening pick into the gap you just created.
- Slide the pick along the right edge of the phone to separate the adhesive.
- Repeat the heating, slicing, and leaving opening picks for the remaining edges of the device.

## Step 10 — Remove the back cover



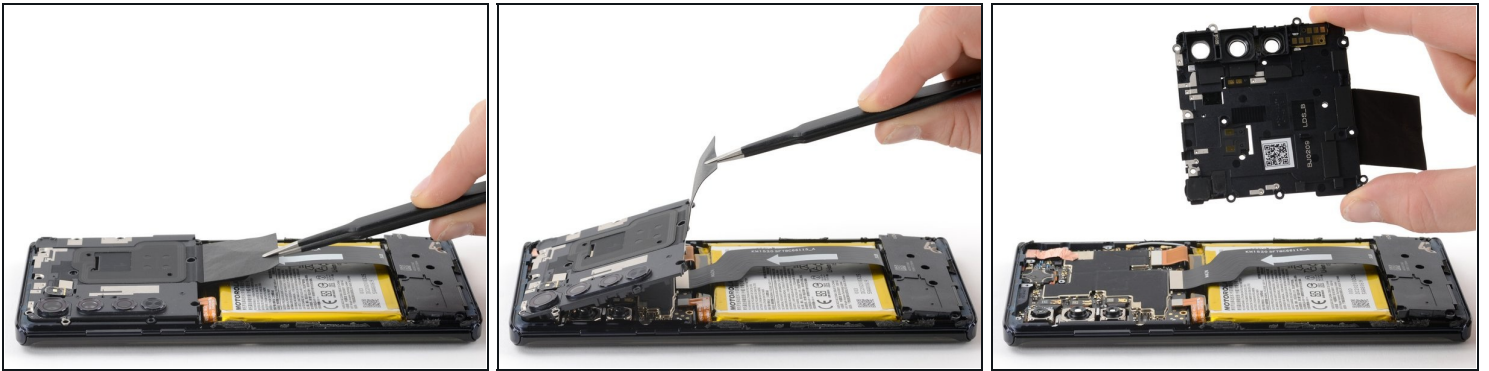
- Remove the back cover, taking care not to damage the components inside the phone.

## Step 11 — Remove the motherboard's screws



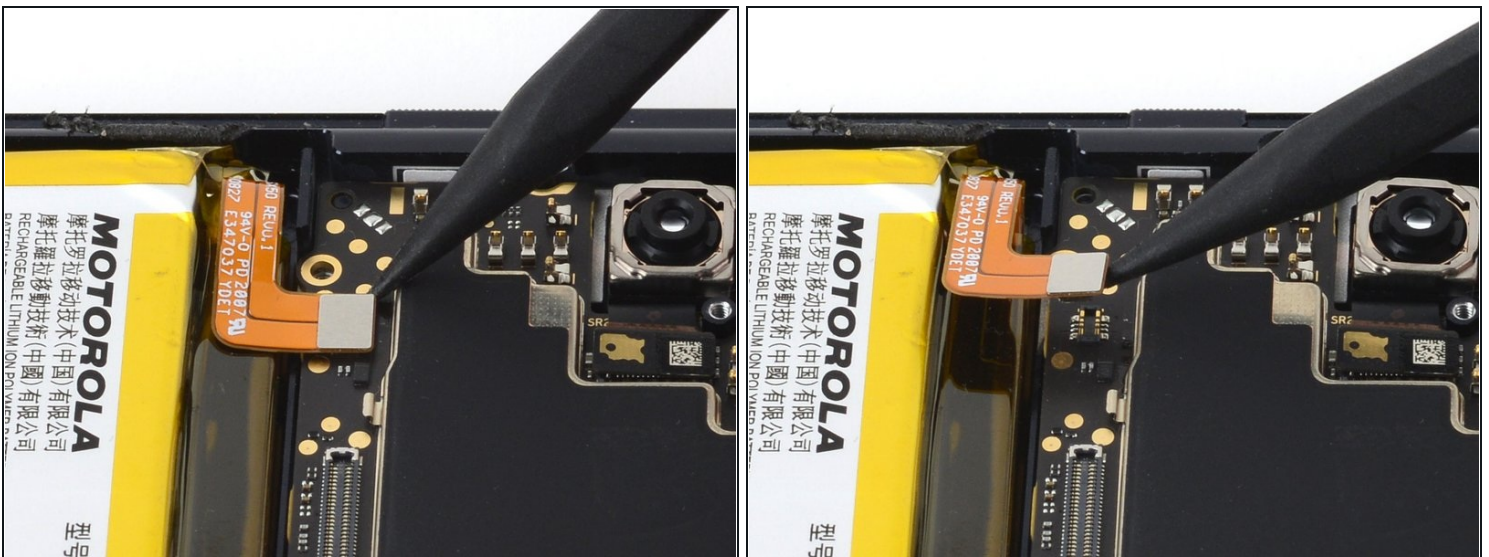
- Use a T5 Torx screwdriver to remove the twelve 3.4 mm-long screws securing the motherboard cover.

## Step 12 — Remove the motherboard cover



- Use a pair of blunt tweezers or your fingers to lift up and remove the motherboard cover.
- ❗ The motherboard cover also contains the phone's flash.

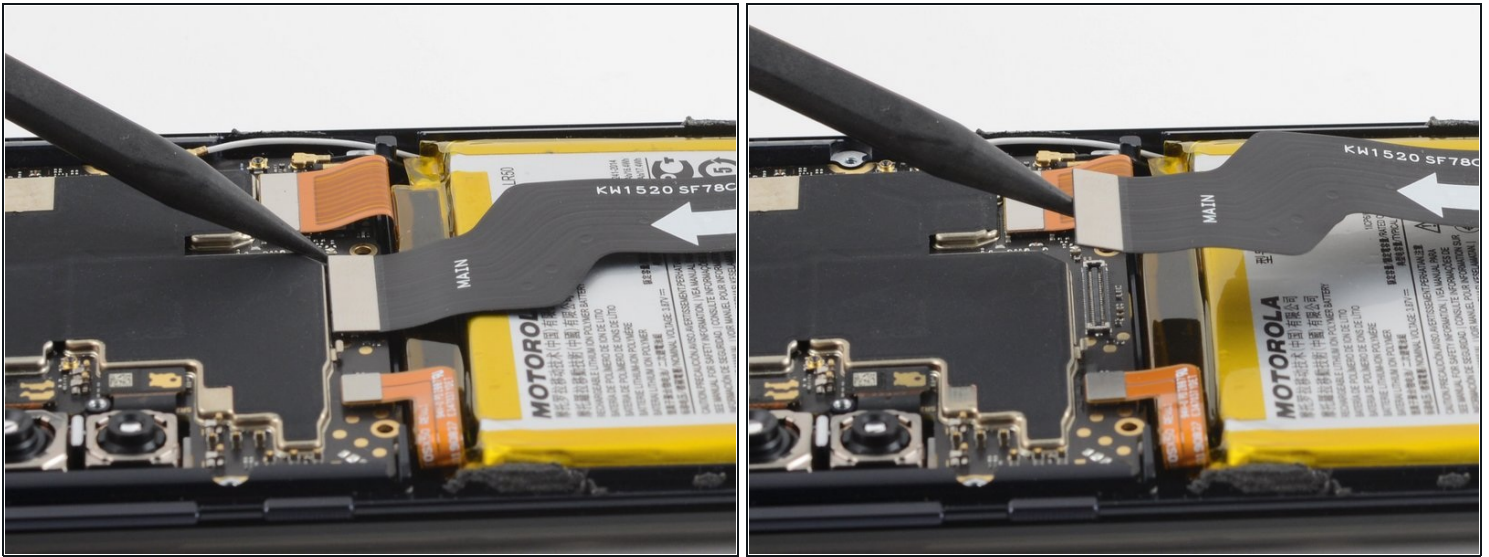
## Step 13 — Disconnect the battery cable's press connector



- Use a spudger to pry up and disconnect the battery cable's press connector from the motherboard.
- ☑ To re-attach [press connectors](#) like this one, carefully align and press down on one side until it clicks into place, then repeat on the other side. Don't press down on the middle. If the connector is misaligned, the pins can bend, causing permanent damage.

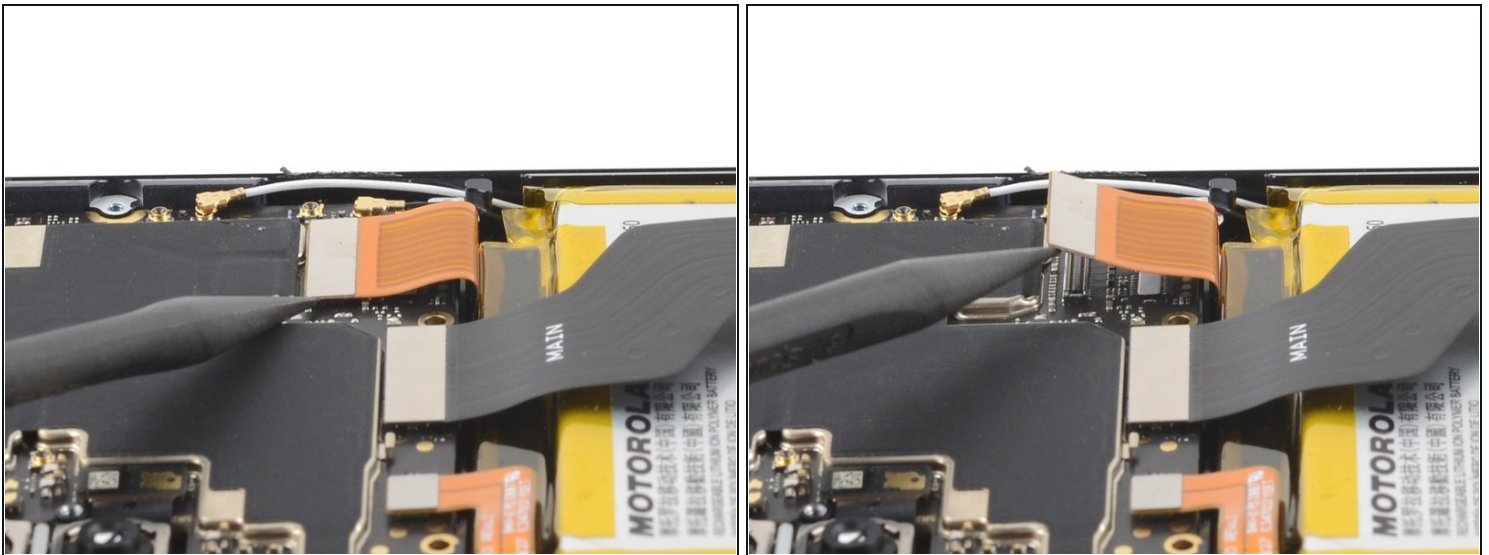


## Step 14 — Disconnect the interconnect cable from the motherboard



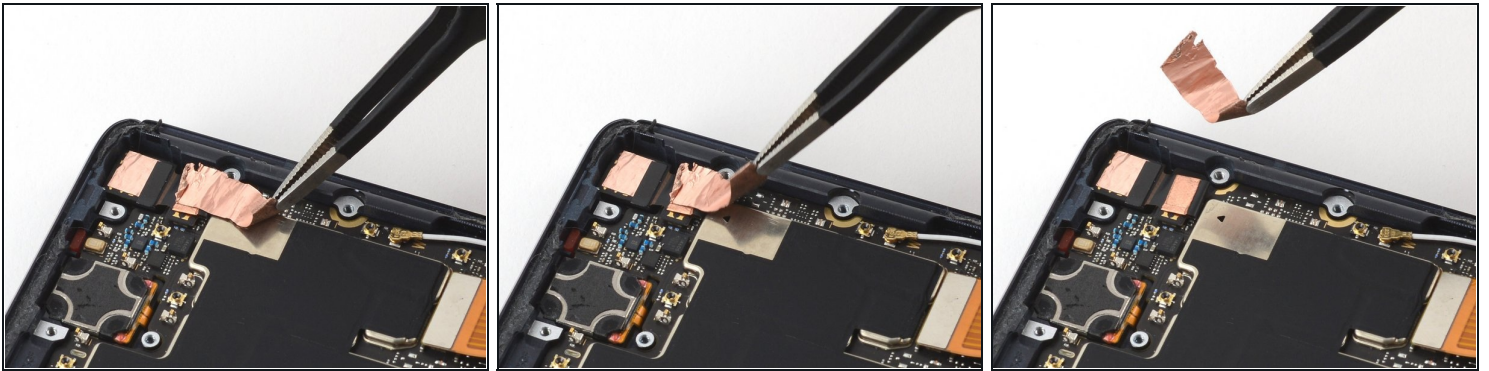
- Use a spudger to pry up and disconnect the interconnect cable's press connector from the motherboard.

## Step 15 — Disconnect the screen ribbon cable's press connector



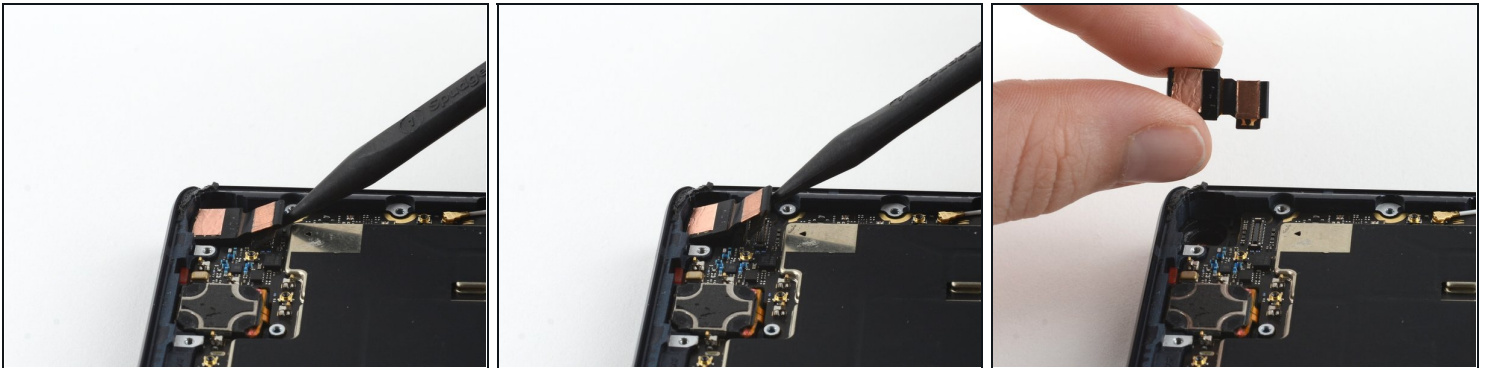
- Use a spudger to pry up and disconnect the screen ribbon cable's press connector from the motherboard.

## Step 16 — Remove the copper tape



- Use a pair of blunt tweezers to peel up and remove the copper tape covering the front camera ribbon cable.

## Step 17 — Remove the front camera cable's press connector



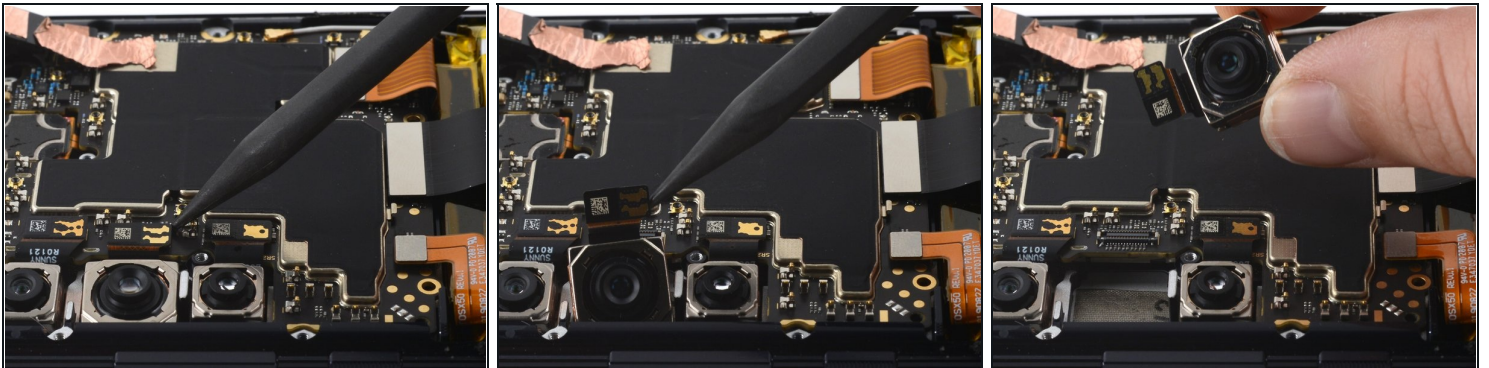
- Use a spudger to pry up the front camera cable's press connector and disconnect it from the motherboard.
- Remove the front camera.

## Step 18 — Remove the wide angle camera's press connector



- Use a spudger to pry up the wide angle camera cable's press connector and disconnect it from the motherboard.
- Remove the wide angle camera.

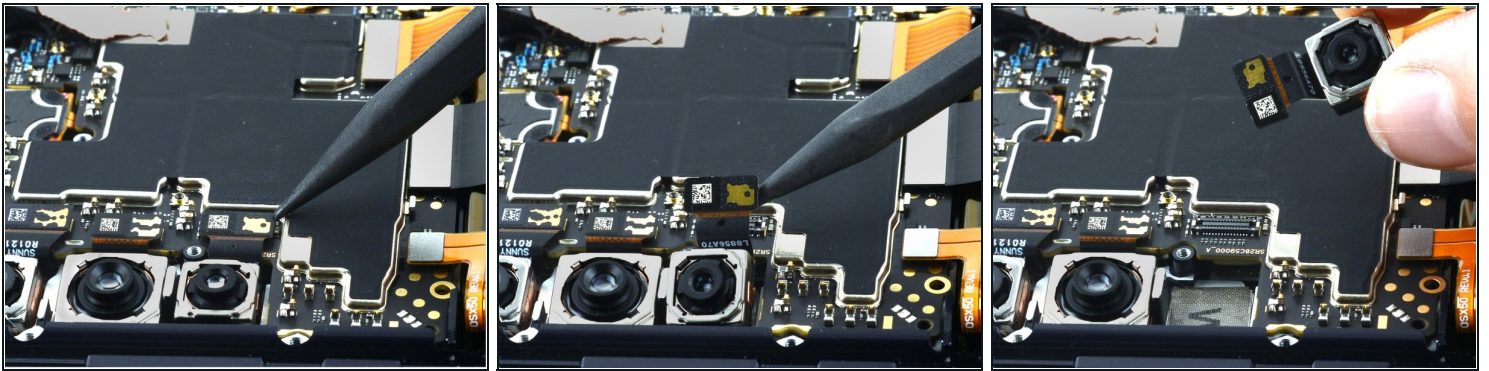
## Step 19 — Remove the main camera cable's press connector



- Use a spudger to pry up the main camera cable's press connector and disconnect it from the motherboard.
- Remove the main camera.



## Step 20 — Remove the telephoto camera's press connector



- Use a spudger to pry up and disconnect the telephoto camera cable's press connector from the motherboard.
- Remove the telephoto camera.

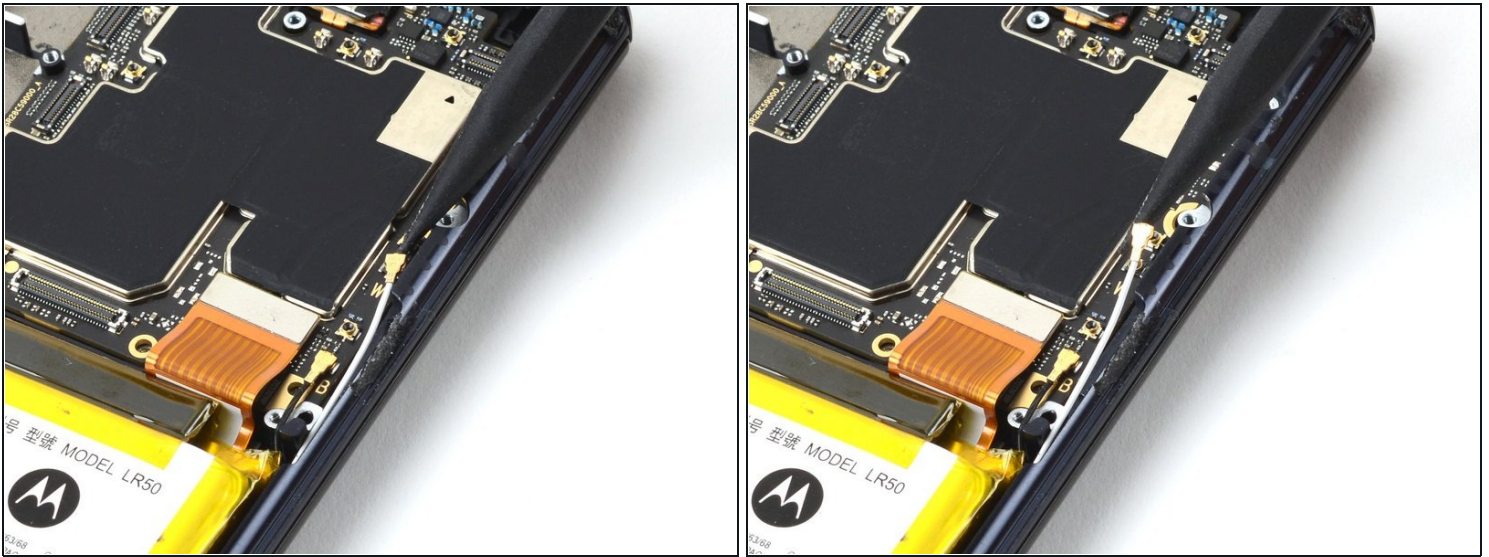
## Step 21 — Disconnect the black coaxial cable



- Use a spudger to pry up the black coaxial cable and detach it from the motherboard.



## Step 22 — Disconnect the white coaxial cable



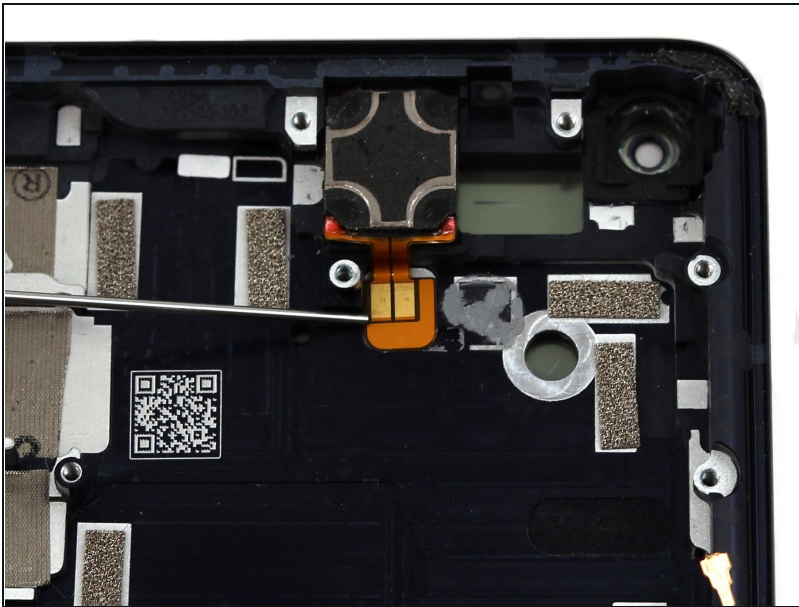
- Use a spudger to pry up the white coaxial cable and detach it from the motherboard.

## Step 23 — Remove the motherboard



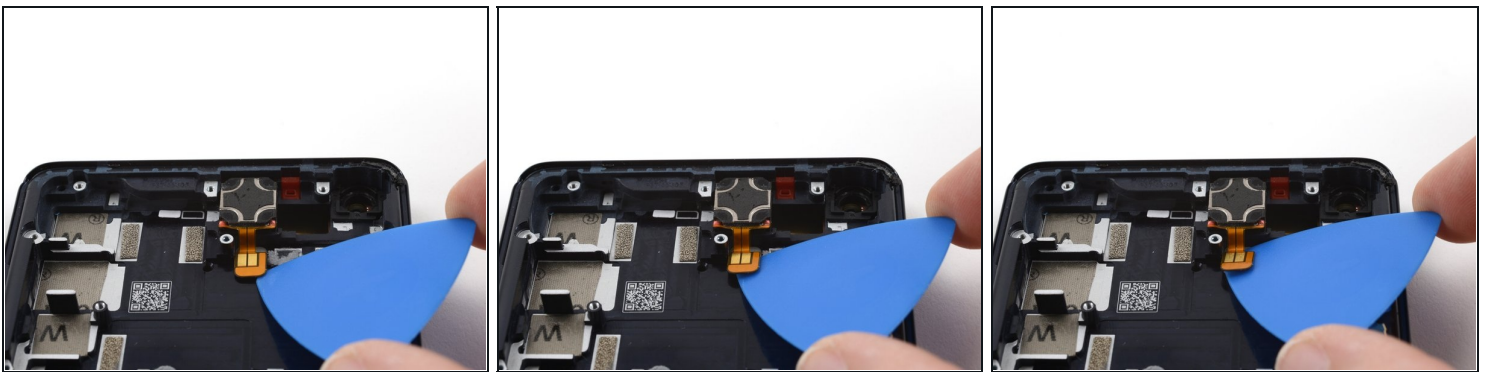
- Use a spudger to pry up and remove the motherboard.
- ✦ Make sure no cables get trapped under the motherboard during reassembly.

## Step 24 — Weaken the earpiece speaker's adhesive



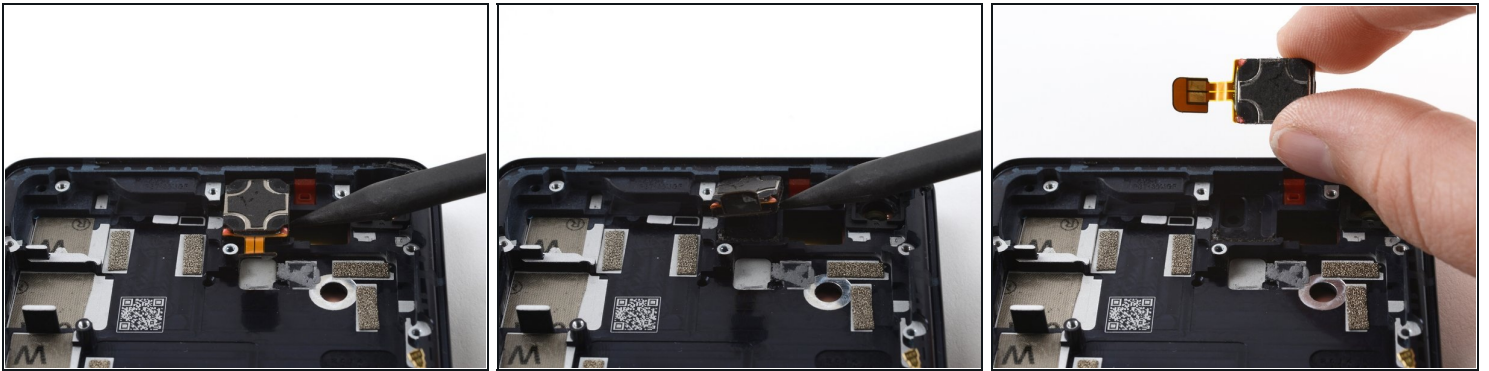
- Apply a drop or two of isopropyl alcohol to weaken the adhesive securing the earpiece speaker.
- Wait thirty seconds for the isopropyl alcohol to weaken the adhesive.
- ⓘ The adhesive is located both under the ribbon cable and under the earpiece speaker.

## Step 25 — Disconnect the earpiece speaker cable



- Use an opening pick to disconnect the earpiece speaker cable from the midframe.

## Step 26 — Remove the earpiece speaker



- Pry at the edge of the earpiece speaker with a spudger to detach it from the frame.
- ❗ If there's any alcohol solution remaining in the phone, carefully wipe it off with a lint-free cloth or allow it to air dry before installing the earpiece speaker.
- ✦ During reassembly, [follow this guide](#) if you are using a pre-cut adhesive card to reinstall the earpiece speaker.

---

To reassemble your device, follow these instructions in reverse order.

For optimal performance, [calibrate your newly installed battery](#) after completing this guide.

Take your e-waste to an [R2 or e-Stewards certified recycler](#).

Repair didn't go as planned? Try some [basic troubleshooting](#), or ask our [Answers Community](#) for help.

Compare your new replacement part to the original part—you may need to transfer remaining components or remove adhesive backings from the new part before you install it.