



Motorola Edge Interconnect Cable Replacement

Follow this guide to remove and replace the...

Written By: Jennifer Berg



INTRODUCTION

Follow this guide to remove and replace the interconnect cable on a Motorola Edge.

TOOLS:

[iOpener](#) (1)

[Suction Handle](#) (1)

[iFixit Opening Picks \(Set of 6\)](#) (1)


[T5 Torx Screwdriver](#) (1)

[Spudger](#) (1)

[blunt tweezers - optional](#) (1)

Step 1 — Heat the bottom edge



 **Completely power off your phone before you begin.**

- [Heat an iOpener](#), then apply it along the bottom edge of the back cover for two minutes.
- ⓘ A hair dryer, heat gun, or hot plate may also be used, but be careful not to overheat the phone because the display and internal battery are both susceptible to heat damage.

Step 2 — Separate the bottom adhesive



- Apply a suction cup to the back of the phone, as close to the center of the bottom edge as possible.
- Pull up on the suction cup with strong, steady force to create a gap between the back cover and the frame.
 - ❗ Depending on the age of your phone, this may be difficult. If you're having trouble, apply more heat to the edge and try again.
- Insert an opening pick into the gap.

Step 3 — Slice the bottom adhesive



- Slide the pick back and forth along the bottom edge to slice through the adhesive.
- Leave the pick in to prevent the adhesive from resealing.

Step 4 — Heat the right edge



- Apply a heated iOpener to the back cover's right edge for two minutes.

Step 5 — Separate the corner adhesive



- Rotate the opening pick around the bottom-right corner of the phone.

Step 6 — Separate the right adhesive



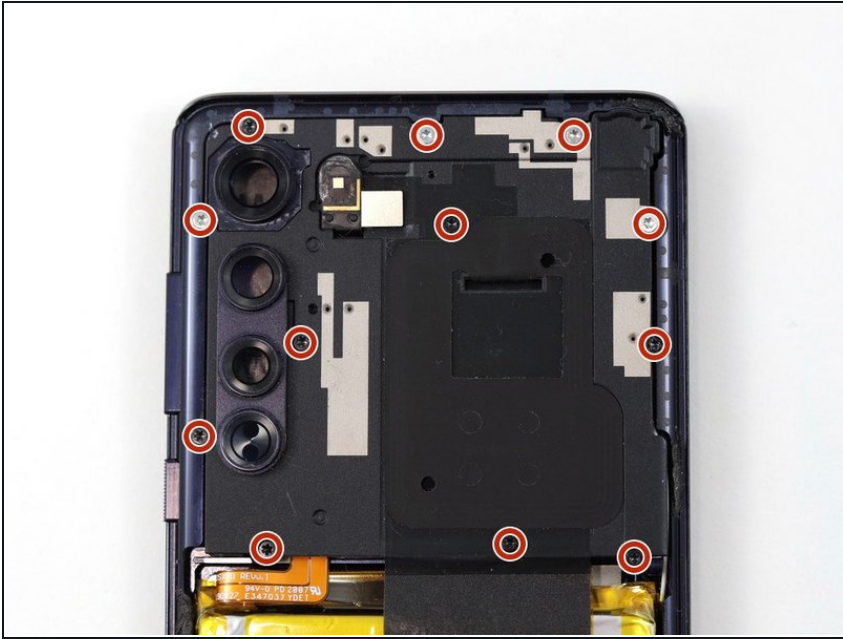
- Insert a new opening pick into the gap you just created.
- Slide the pick along the right edge of the phone to separate the adhesive.
- Repeat the heating, slicing, and leaving opening picks for the remaining edges of the device.

Step 7 — Remove the back cover



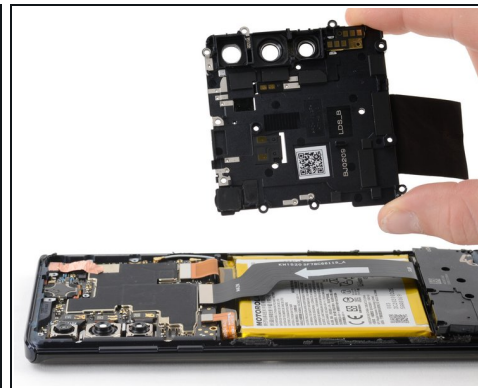
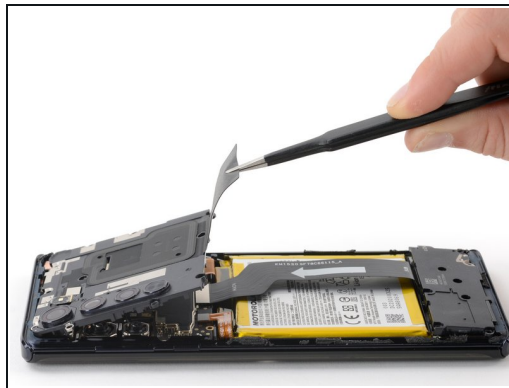
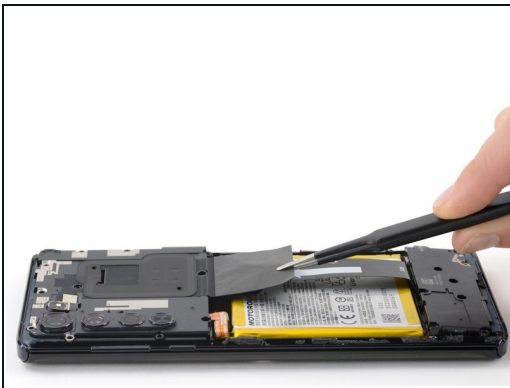
- Remove the back cover, taking care not to damage the components inside the phone.

Step 8 — Remove the motherboard's screws



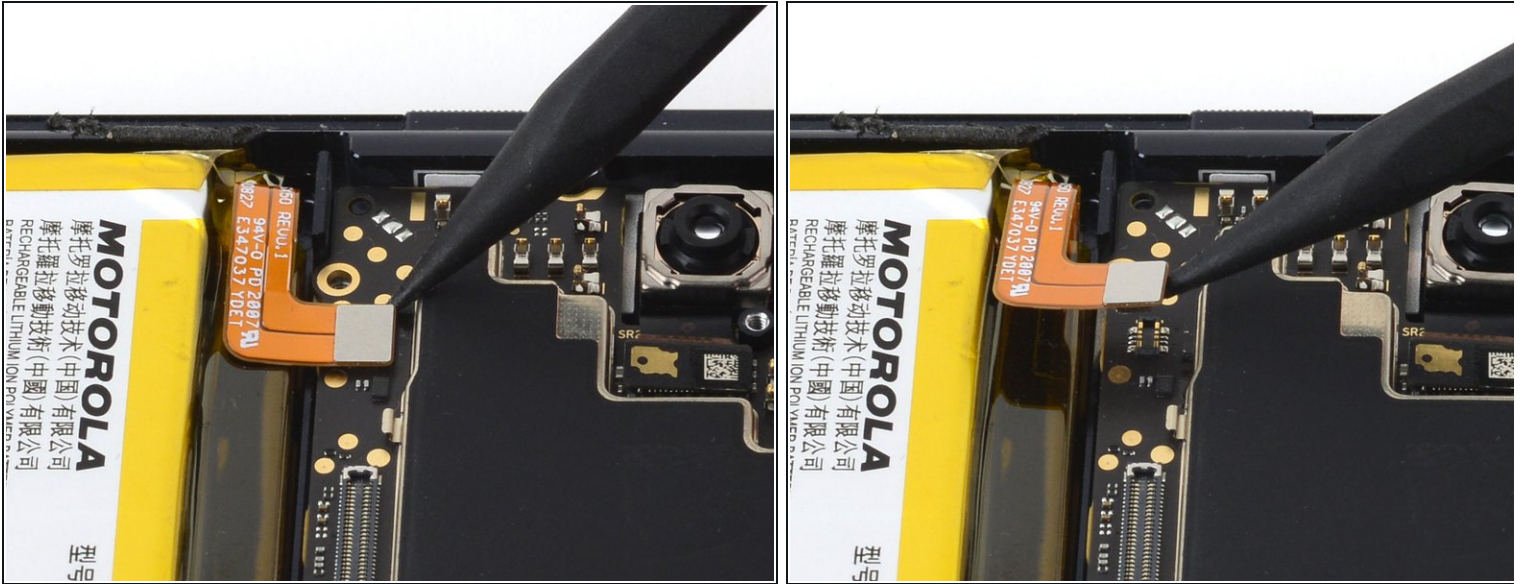
- Use a T5 Torx screwdriver to remove the twelve 3.4 mm-long screws securing the motherboard cover.

Step 9 — Remove the motherboard cover



- Use a pair of blunt tweezers or your fingers to lift up and remove the motherboard cover.
- ⓘ The motherboard cover also contains the phone's flash.

Step 10 — Disconnect the battery cable's press connector



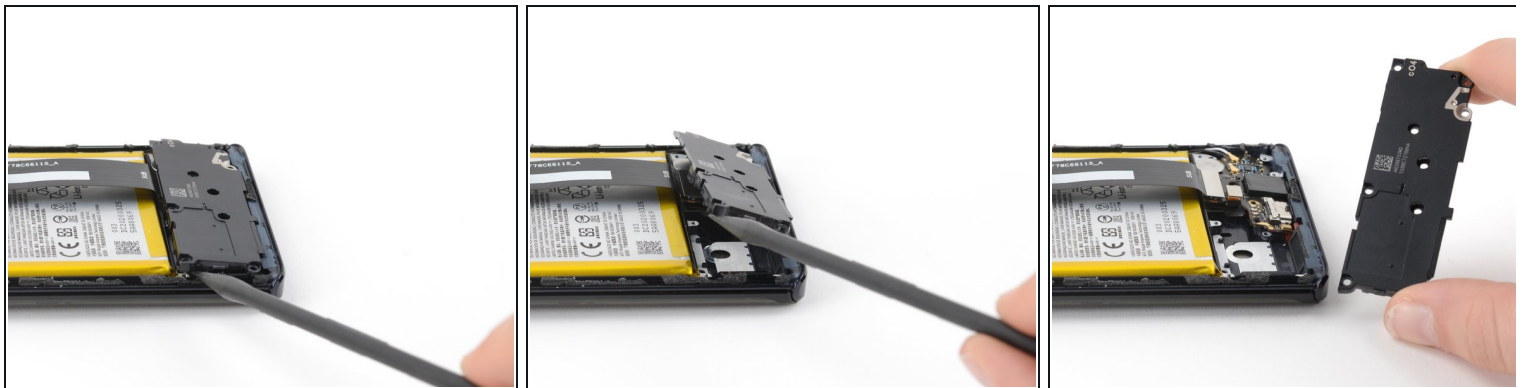
- Use a spudger to pry up and disconnect the battery cable's press connector from the motherboard.
- ☑ To re-attach [press connectors](#) like this one, carefully align and press down on one side until it clicks into place, then repeat on the other side. Don't press down on the middle. If the connector is misaligned, the pins can bend, causing permanent damage.

Step 11 — Remove the daughterboard's t5 screws



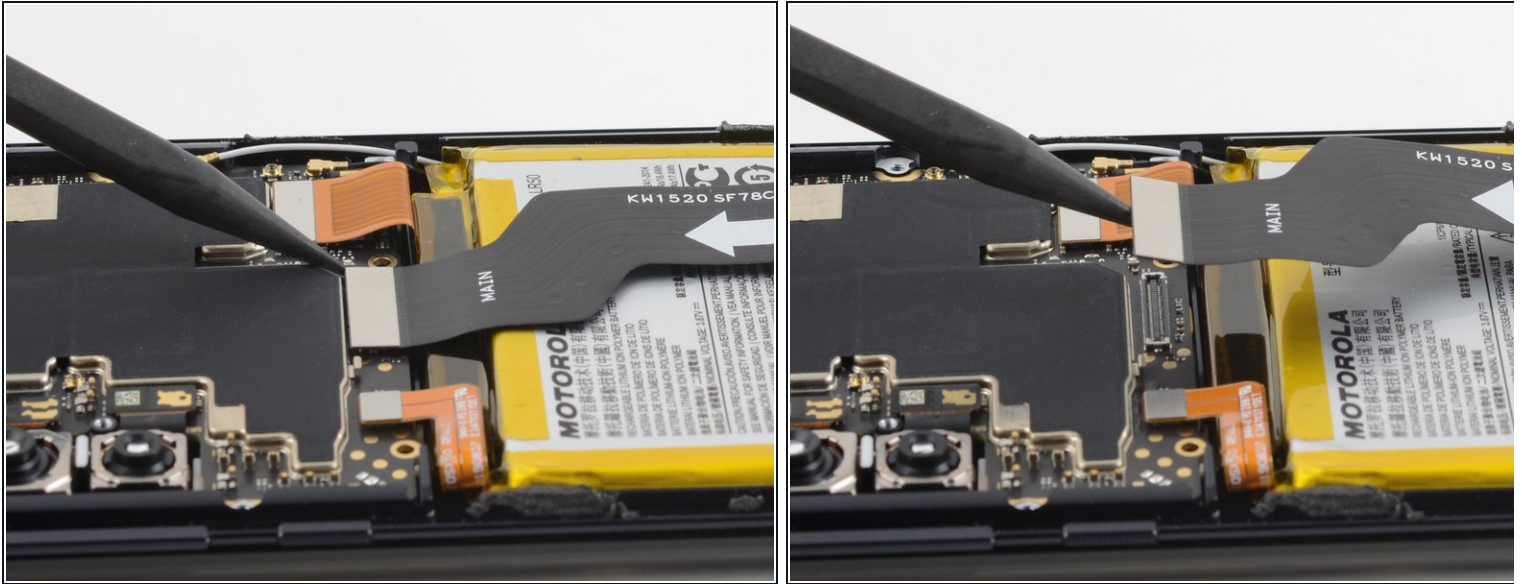
- Use a T5 Torx screwdriver to remove the nine 3.4 mm screws securing the daughterboard.

Step 12 — Remove the daughterboard cover



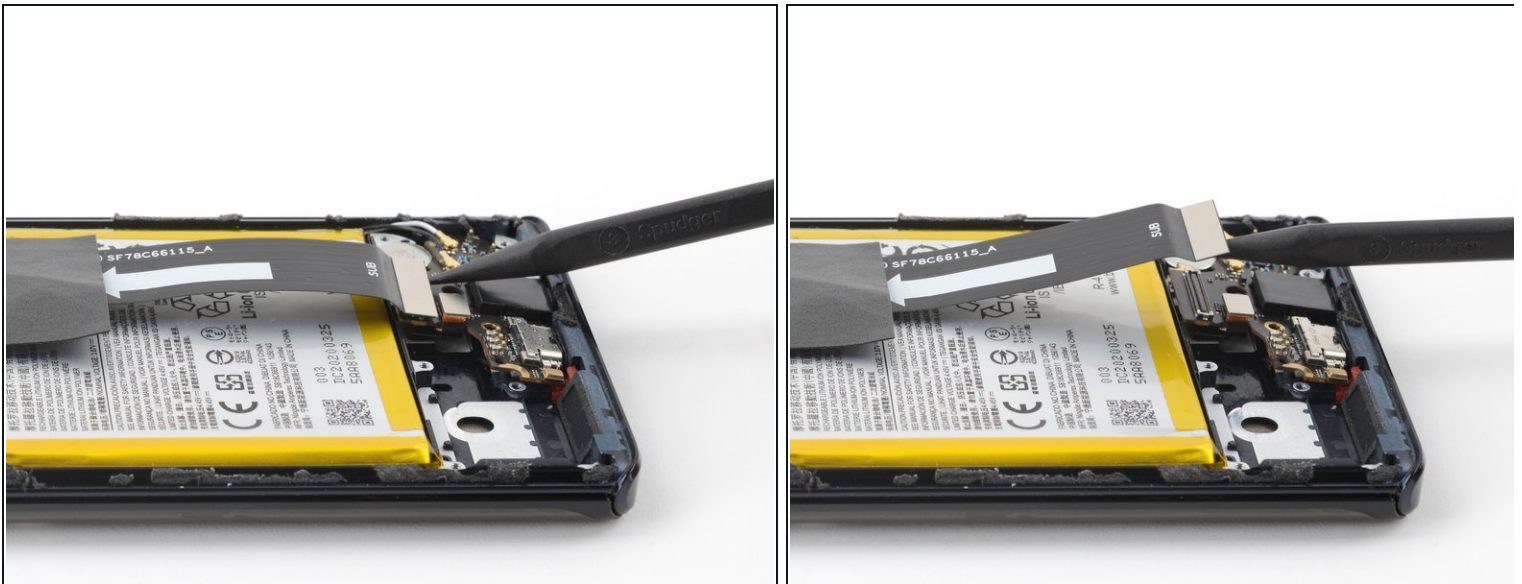
- Use a spudger to pry up the plastic daughterboard cover and disconnect it from the rest of the phone.

Step 13 — Disconnect the interconnect cable from the motherboard



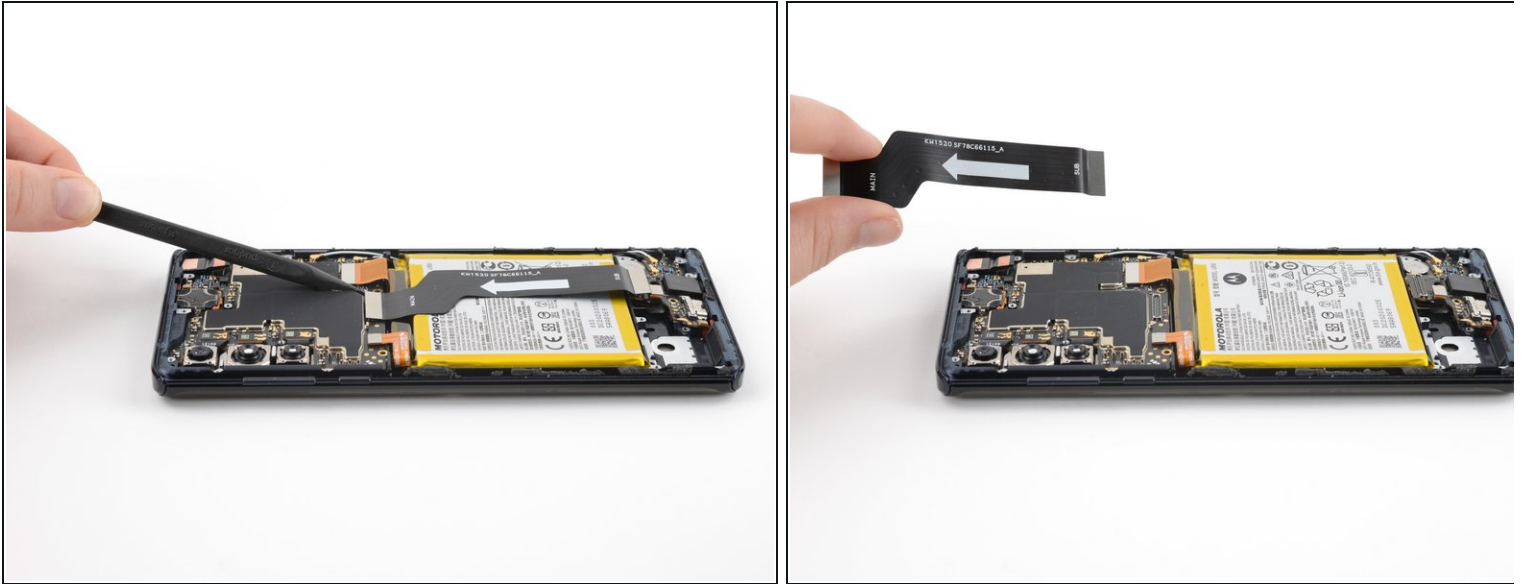
- Use a spudger to pry up and disconnect the interconnect cable's press connector from the motherboard.

Step 14 — Disconnect the interconnect cable from the daughterboard



- Use a spudger to pry up and disconnect the interconnect cable's press connector from the daughterboard.

Step 15 — Remove the interconnect cable



- Use your fingers to remove the interconnect cable after it has been disconnected from both the motherboard and daughterboard.

To reassemble your device, follow these instructions in reverse order.

For optimal performance, [calibrate your newly installed battery](#) after completing this guide.

Take your e-waste to an [R2 or e-Stewards certified recycler](#).

Repair didn't go as planned? Try some [basic troubleshooting](#), or ask our [Answers Community](#) for help.