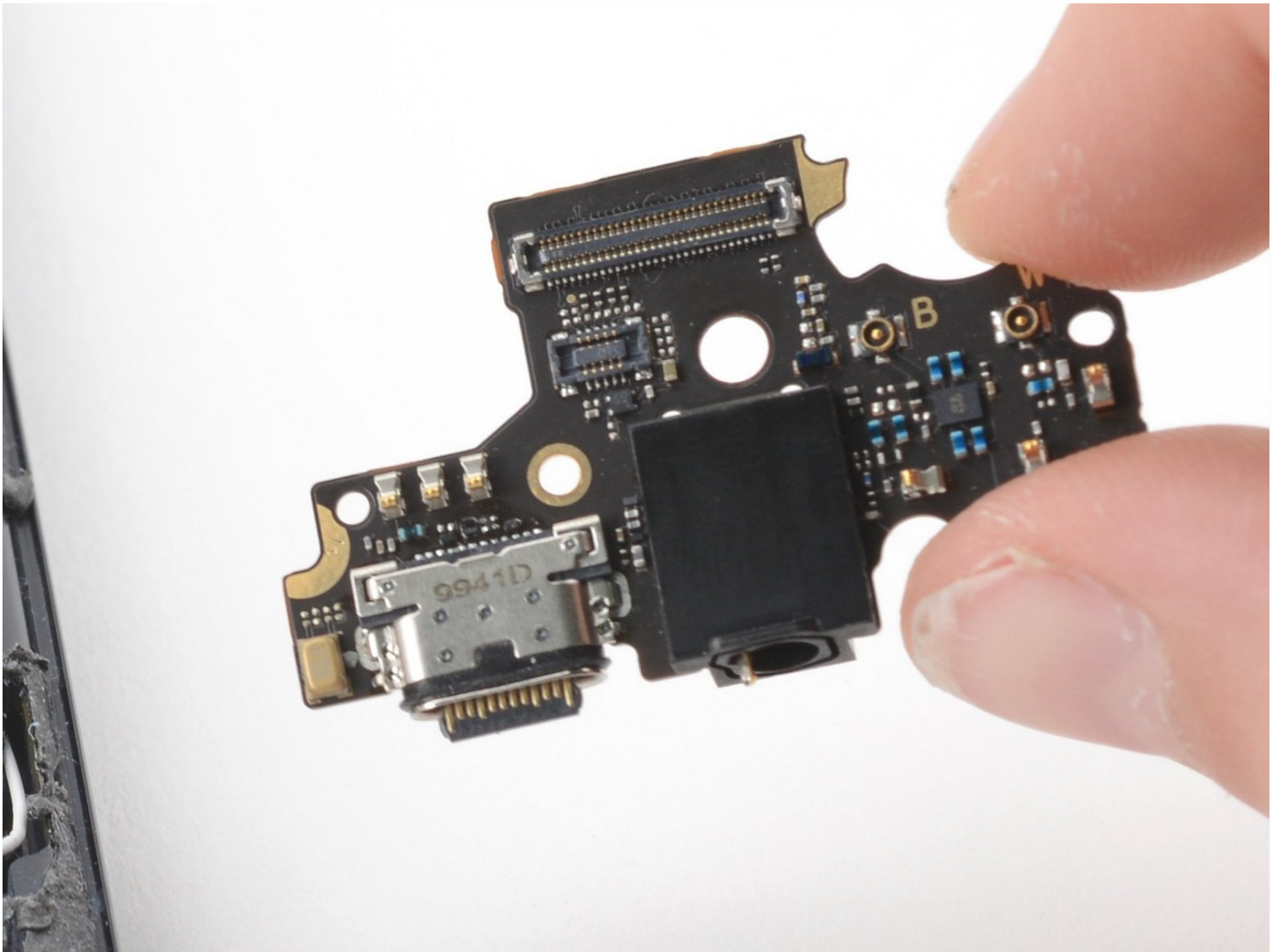




# Motorola Edge Daughterboard Replacement

Follow this guide to remove and replace the...

Written By: Jennifer Berg



# INTRODUCTION

Follow this guide to remove and replace the daughterboard on a Motorola Edge.

Before you begin, download the [Rescue and Smart Assistant](#) app to backup your device and diagnose whether your problem is software or hardware related.

The guide is also useful if you want to replace the audio jack and/or charging port, since they are both soldered to the daughterboard.

**For your safety, discharge the battery below 25% before disassembling your phone.** This reduces the risk of fire if the battery is accidentally damaged during the repair. If your battery is swollen, [take appropriate precautions](#).


---

## TOOLS:

- [iOpener](#) (1)
  - [Suction Handle](#) (1)
  - [iFixit Opening Picks \(Set of 6\)](#) (1)
  - [T5 Torx Screwdriver](#) (1)
  - [Spudger](#) (1)
  - [ESD Safe Blunt Nose Tweezers](#) (1)
- 

## Step 1 — Heat the bottom edge



 **Completely power off your phone before you begin.**

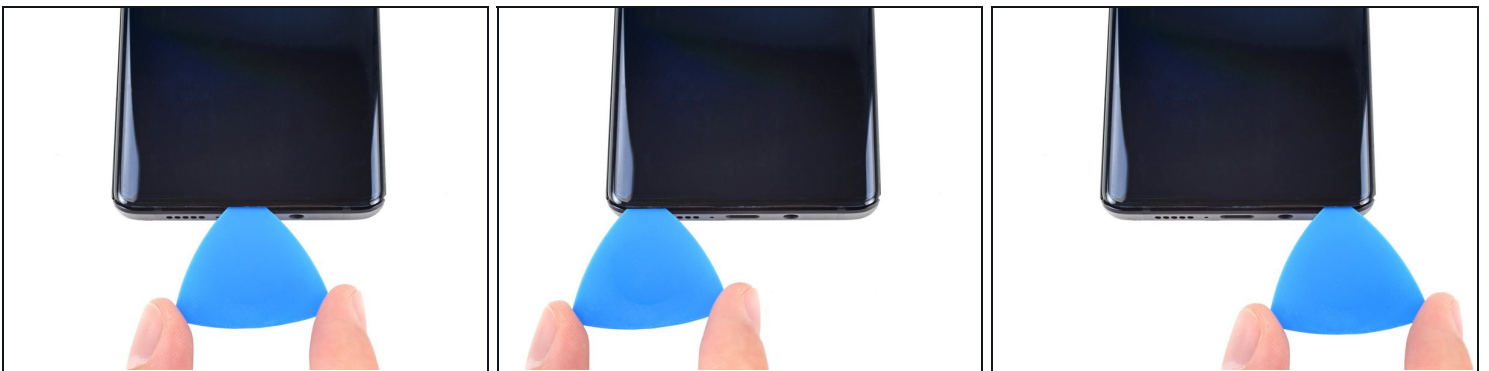
- [Heat an iOpener](#), then apply it along the bottom edge of the back cover for two minutes.
- ⓘ A hair dryer, heat gun, or hot plate may also be used, but be careful not to overheat the phone because the display and internal battery are both susceptible to heat damage.

## Step 2 — Separate the bottom adhesive



- Apply a suction cup to the back of the phone, as close to the center of the bottom edge as possible.
- Pull up on the suction cup with strong, steady force to create a gap between the back cover and the frame.
  - ① Depending on the age of your phone, this may be difficult. If you're having trouble, apply more heat to the edge and try again.
- Insert an opening pick into the gap.

## Step 3 — Slice the bottom adhesive



- Slide the pick back and forth along the bottom edge to slice through the adhesive.
- Leave the pick in to prevent the adhesive from resealing.

## Step 4 — Heat the right edge



- Apply a heated iOpener to the back cover's right edge for two minutes.

## Step 5 — Separate the corner adhesive



- Rotate the opening pick around the bottom-right corner of the phone.

## Step 6 — Separate the right adhesive



- Insert a new opening pick into the gap you just created.
- Slide the pick along the right edge of the phone to separate the adhesive.
- Repeat the heating, slicing, and leaving opening picks for the remaining edges of the device.

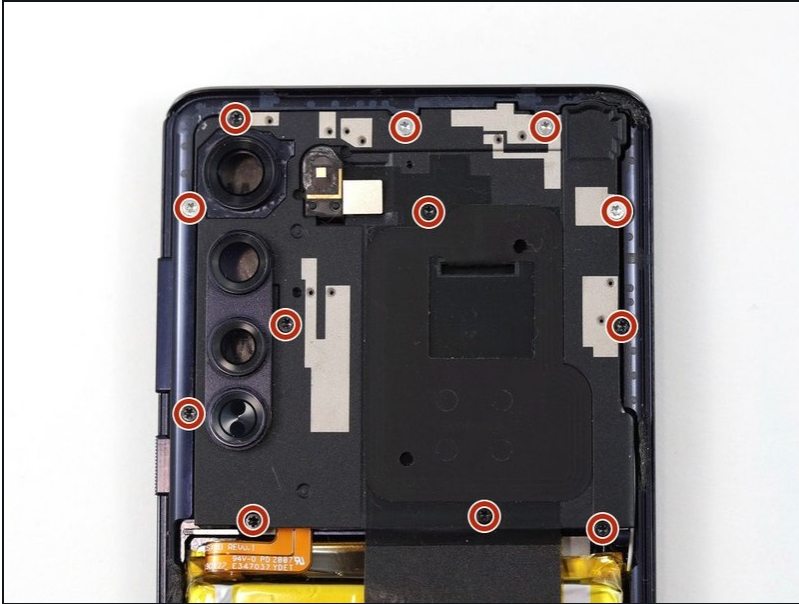
## Step 7 — Remove the back cover



- Remove the back cover, taking care not to damage the components inside the phone.

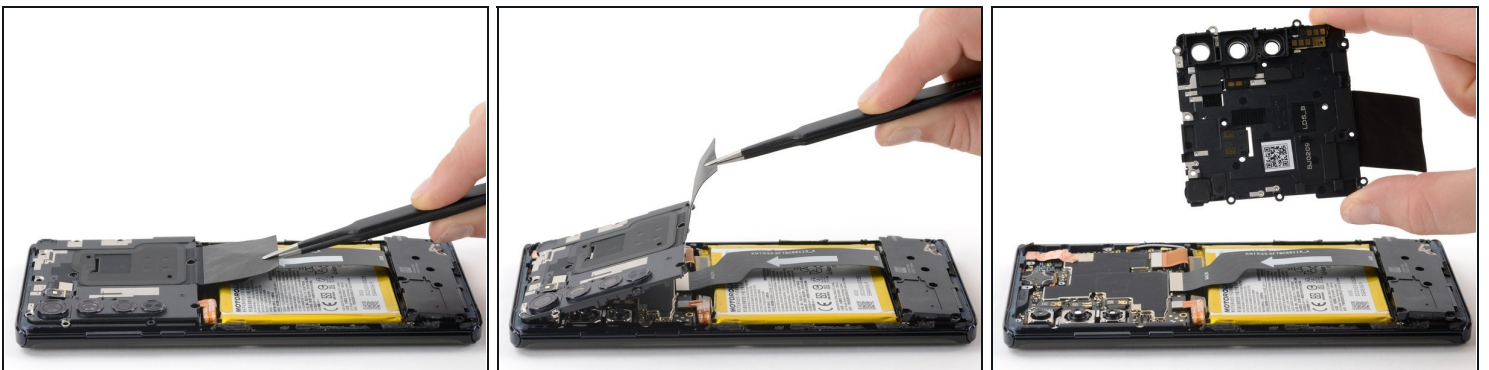


## Step 8 — Remove the motherboard's screws



- Use a T5 Torx screwdriver to remove the twelve 3.4 mm-long screws securing the motherboard cover.

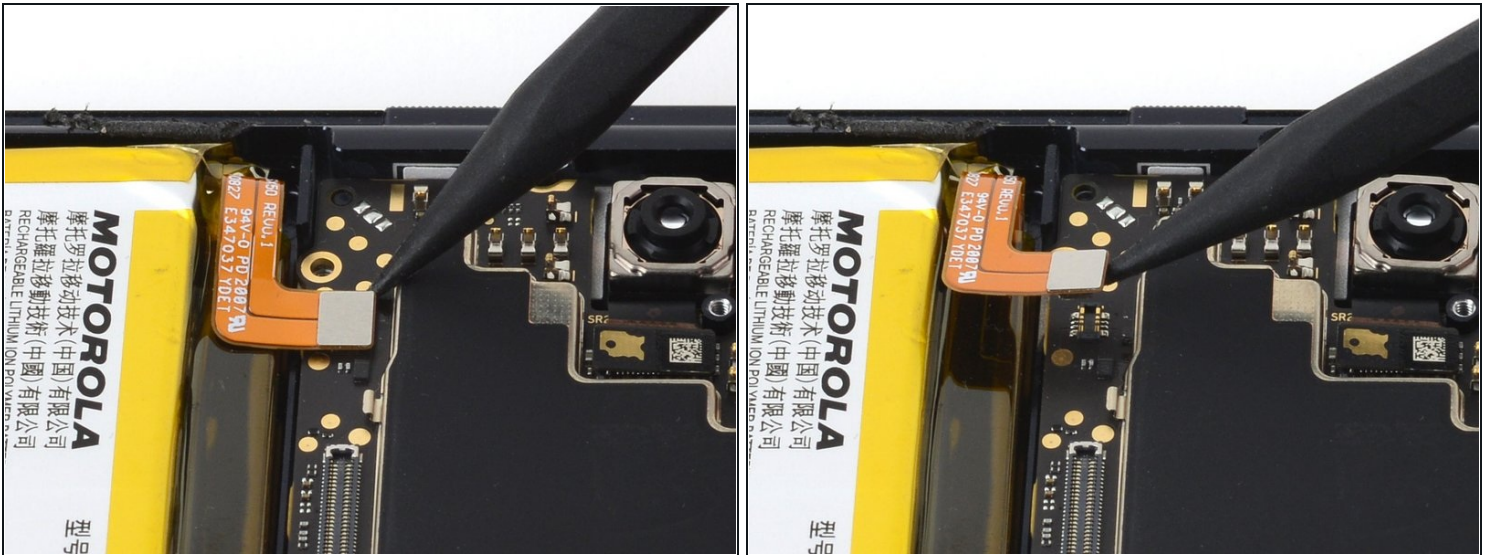
## Step 9 — Remove the motherboard cover



- Use a pair of blunt tweezers or your fingers to lift up and remove the motherboard cover.

ⓘ The motherboard cover also contains the phone's flash.

## Step 10 — Disconnect the battery cable's press connector



- Use a spudger to pry up and disconnect the battery cable's press connector from the motherboard.
- ☑ To re-attach [press connectors](#) like this one, carefully align and press down on one side until it clicks into place, then repeat on the other side. Don't press down on the middle. If the connector is misaligned, the pins can bend, causing permanent damage.

## Step 11 — Remove the daughterboard's t5 screws



- Use a T5 Torx screwdriver to remove the nine 3.4 mm screws securing the daughterboard.

## Step 12 — Remove the daughterboard cover



- Use a spudger to pry up the plastic daughterboard cover and disconnect it from the rest of the phone.

## Step 13 — Disconnect the interconnect cable from the daughterboard



- Use a spudger to pry up and disconnect the interconnect cable's press connector from the daughterboard.

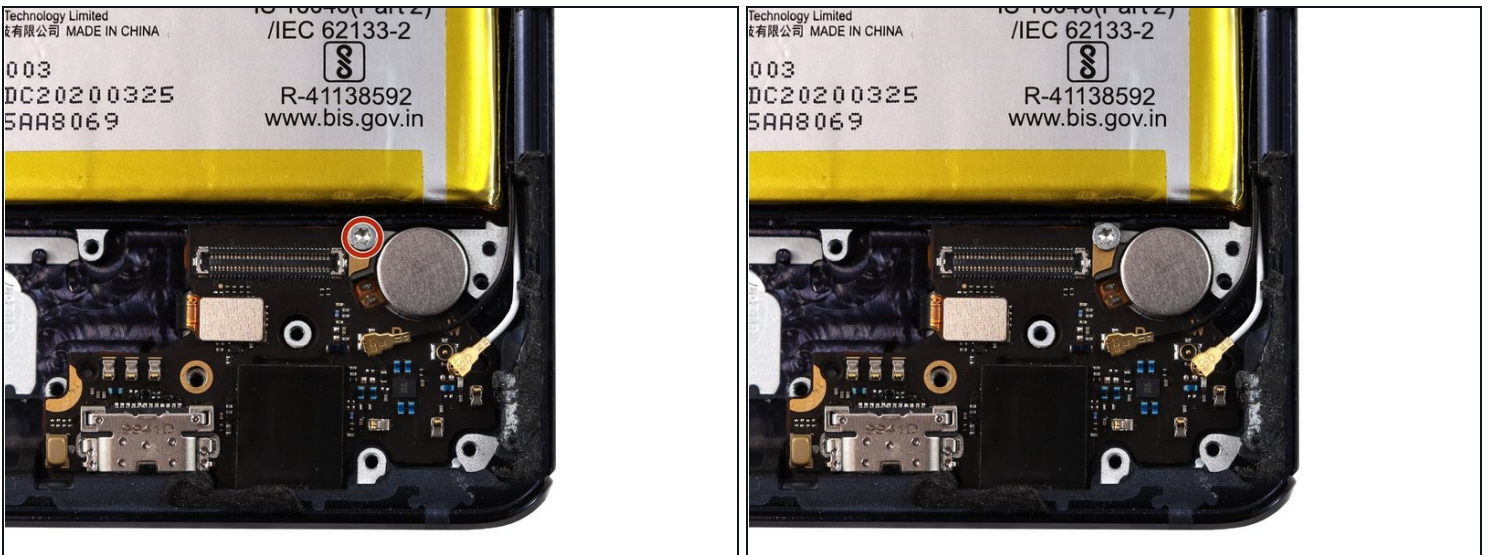


## Step 14 — Disconnect the fingerprint sensor cable's press connector



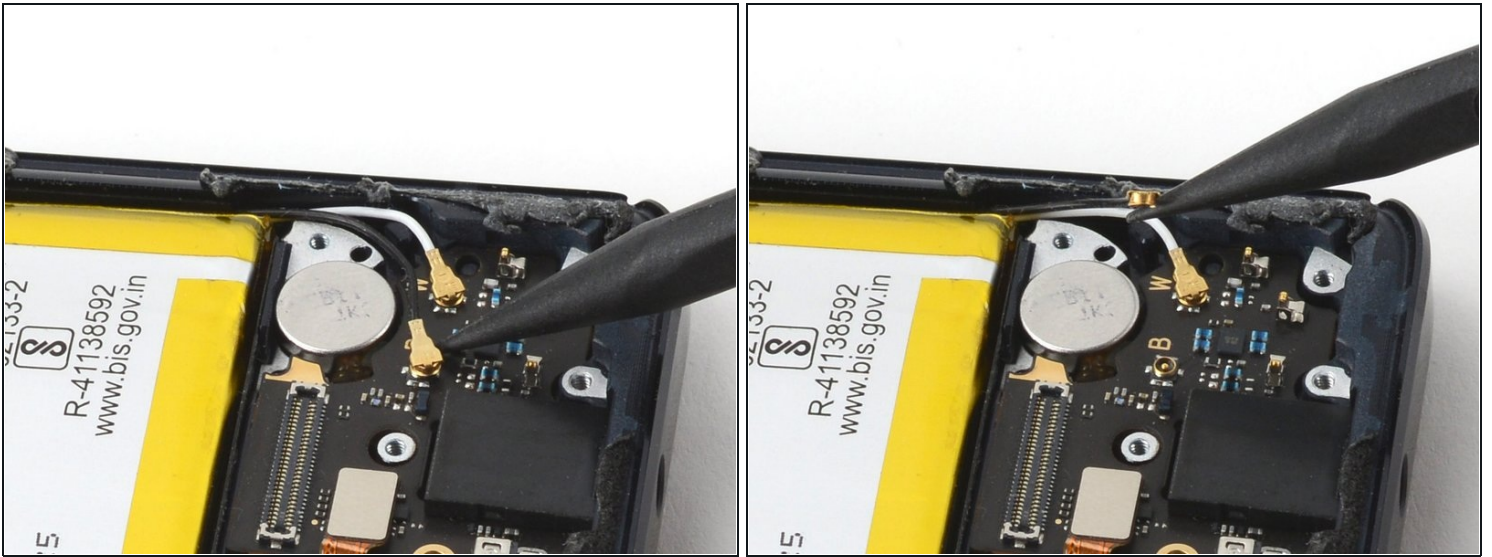
- Use a spudger to pry up the fingerprint sensor cable's press connector and disconnect it from the daughterboard.

## Step 15 — Remove the daughterboard screw



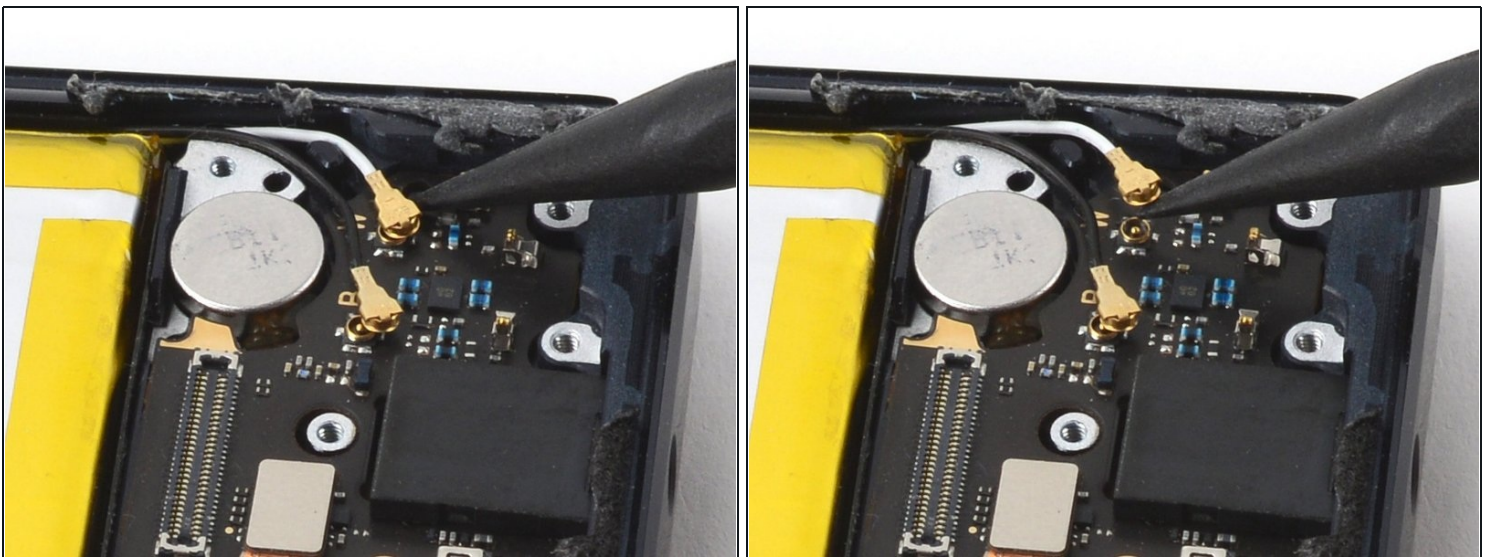
- Use a T5 Torx screwdriver to remove the single 3.2 mm screw securing the daughterboard.

## Step 16 — Disconnect the black coaxial cable



- Use a spudger to pry up the black coaxial cable and detach it from the daughterboard.

## Step 17 — Disconnect the white coaxial cable



- Use a spudger to pry up the white coaxial cable and disconnect it from the daughterboard.

## Step 18 — Remove the daughterboard



- Use a spudger to pry up and separate the daughterboard from the rest of the phone.
- ⓘ When removing and replacing the daughterboard, be careful not to damage any of the cables that attach to it.
- 

To reassemble your device, follow these instructions in reverse order.

For optimal performance, [calibrate your newly installed battery](#) after completing this guide.

Take your e-waste to an [R2 or e-Stewards certified recycler](#).

Repair didn't go as planned? Try some [basic troubleshooting](#), or ask our [Answers Community](#) for help.

Compare your new replacement part to the original part—you may need to transfer remaining components or remove adhesive backings from the new part before you install it.