



iRobot Roomba 690 Battery Replacement

This guide explains how to remove and replace the battery for the iRobot Roomba 690.

Written By: John Galvin



INTRODUCTION

After extensive use, you may need to replace the battery for your iRobot Roomba 690 due to it failing to charge or because of frequent overheating. The following guide explains how this can be accomplished. Additionally, this process is sometimes necessary when performing other maintenance, as it is dangerous to work on other electrical components with a live battery is connected to the device. Removing a battery that is functional and undamaged should not present any major hazards.



TOOLS:

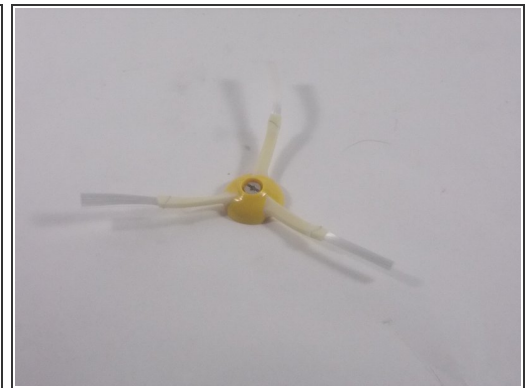
- [Phillips #0 Screwdriver](#) (1)
-

Step 1 — Spinning Brush



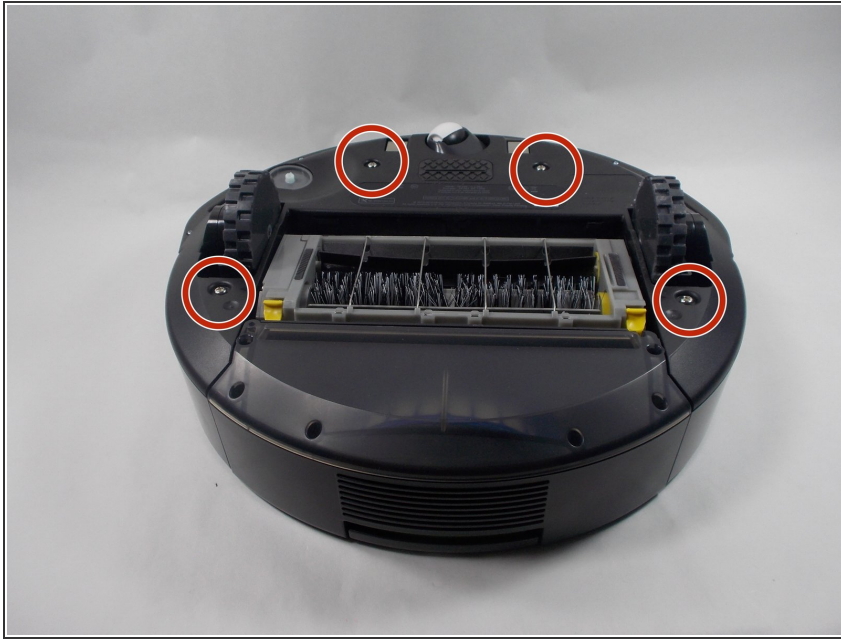
- Place the Roomba upside down so that the wheels and brushes are facing upward.

Step 2



- Loosen the captive screw in the spinning brush using a Phillips #0 screwdriver.
- Remove the spinning brush from the vacuum.

Step 3 — Battery



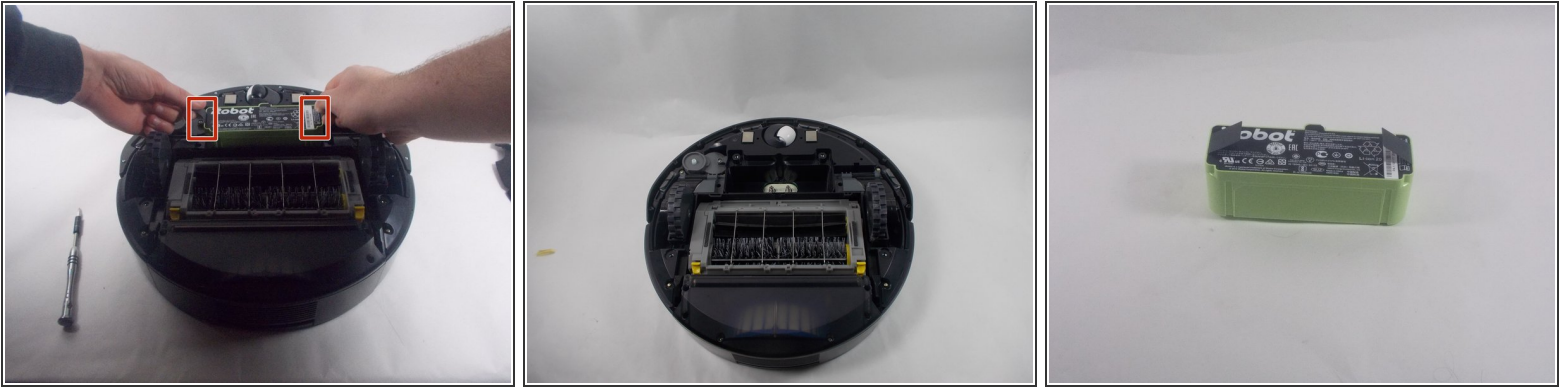
- Remove the four 6.4 mm screws from the bottom of the Roomba using a Phillips #0 screwdriver.
- ⓘ They are labeled with triangular arrows next to them on the cover.

Step 4



- Lift the bottom cover up from the rest of the Roomba.

Step 5



- Lift out the battery by pulling up on the two flexible tabs that are attached to the left and right sides.

To reassemble your device, follow these instructions in reverse order.