



Commercial Electric MMA-8302R Multimeter

Fuse Replacement

In this guide I will be showing you how to replace a fuse of a Commercial Electric auto range MMA-8302R multi-meter.

Written By: DeZom





TOOLS:

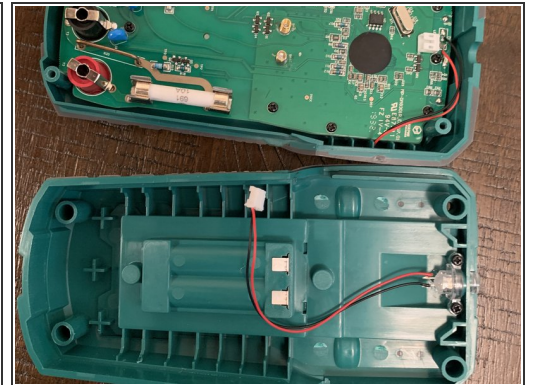
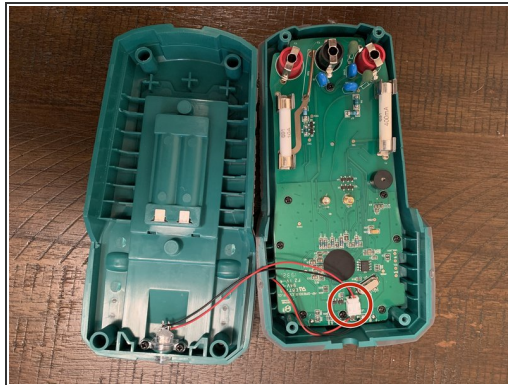
- [Phillips #2 Screwdriver](#) (1)
-

Step 1 — Turn off multimeter and unplug the two leads.



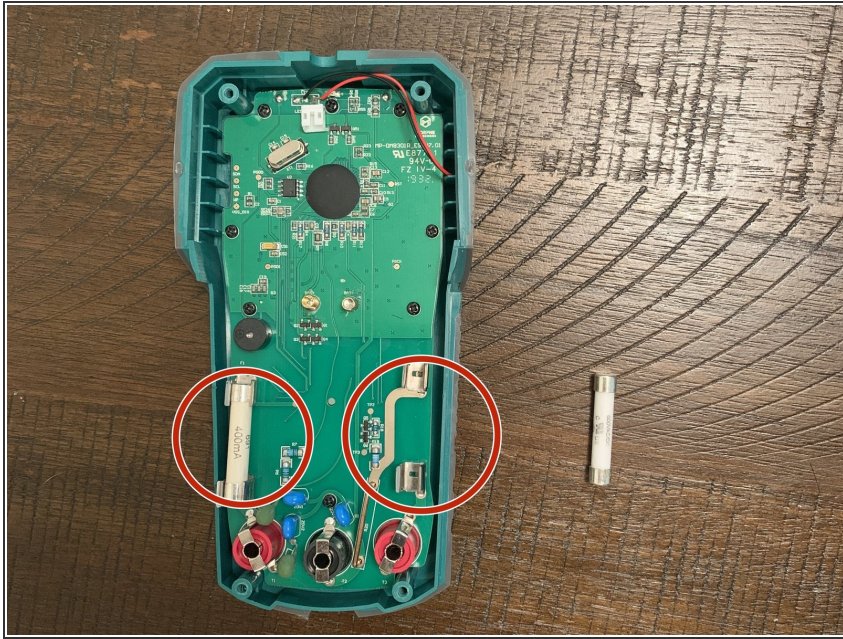
- Turn the dial until the little green mark is set on the "OFF" option. Next disconnect the two testing leads by simply pulling them away from the body. Set these aside for later.

Step 2 — Unscrew the four phillips screws that hold the back panel



- Unscrew the four Phillips screws that hold the back panel and carefully open it from either side and lay it besides the main body, try not to break the top led cable.
- Disconnect the top led cable from the PCB and move everything aside.

Step 3 — Swap out the fuses



- Swap the blown fuses out for new ones and you're done!

To reassemble your device, follow these instructions in reverse order.