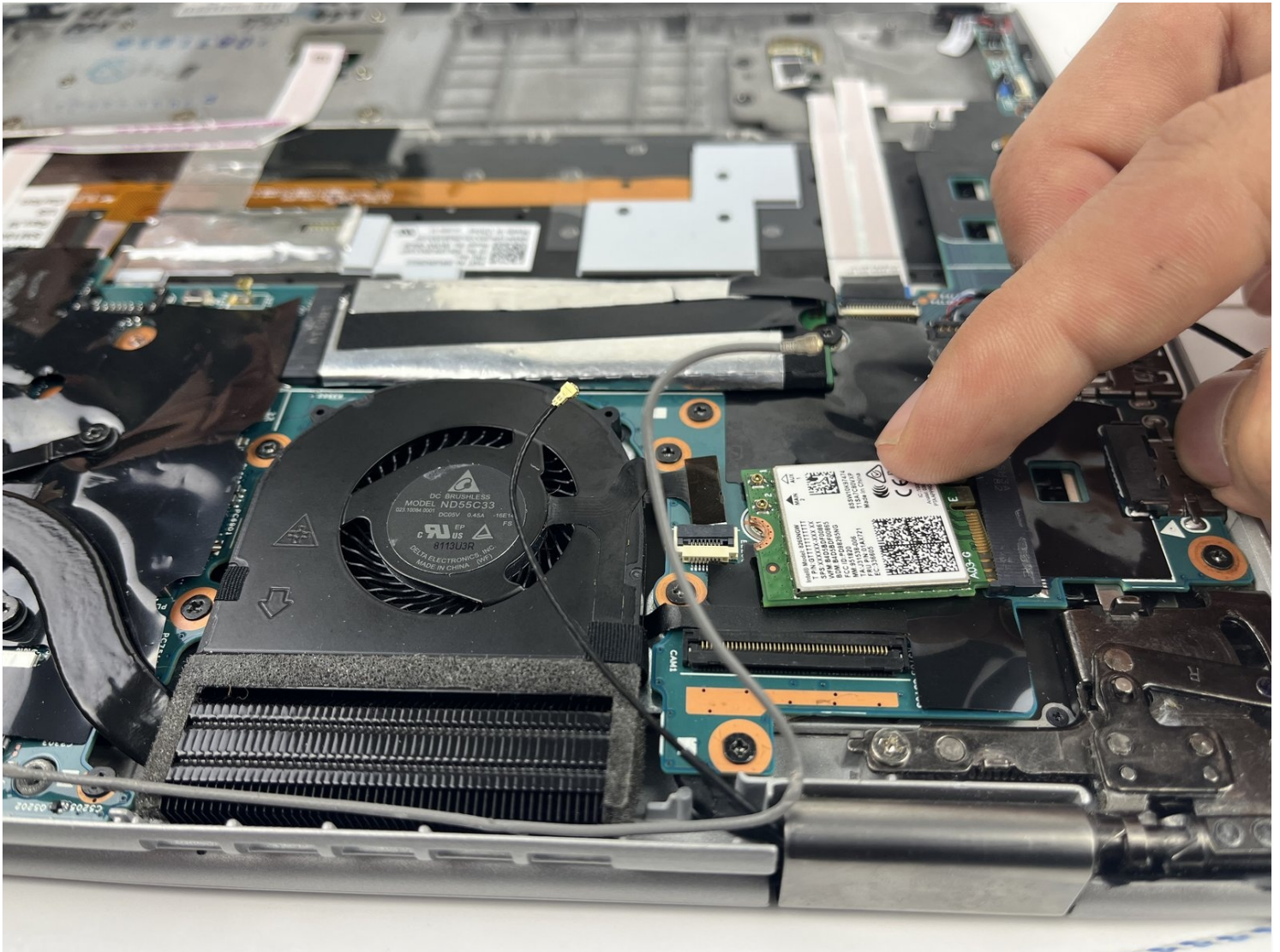




Lenovo ThinkPad X1 Yoga 2nd Generation Wi-Fi Card Replacement

This guide will take you through the steps of...

Written By: Travis Spranger



INTRODUCTION

This guide will take you through the steps of replacing the Wi-Fi Card on a Lenovo ThinkPad X1 Yoga 2nd Generation. The Wi-fi Card is an important aspect of any laptop because it is how the user connects the laptop to an available wireless network. Before beginning, make sure to power off your device completely and disconnect from any external power source.

TOOLS:


Phillips #0 Screwdriver (1)

Tweezers (1)

Metal Spudger (1)

Step 1 — Back Cover



 Ensure the laptop is powered off and the charging cable is disconnected before opening the back cover.

- Flip over the laptop to access the back cover.

Step 2



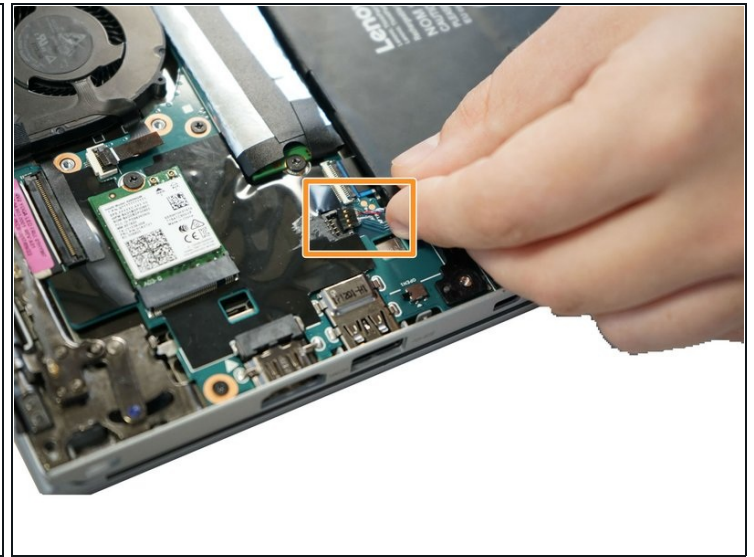
- Use a Phillips #0 screwdriver to remove the eight 8 mm screws.

Step 3



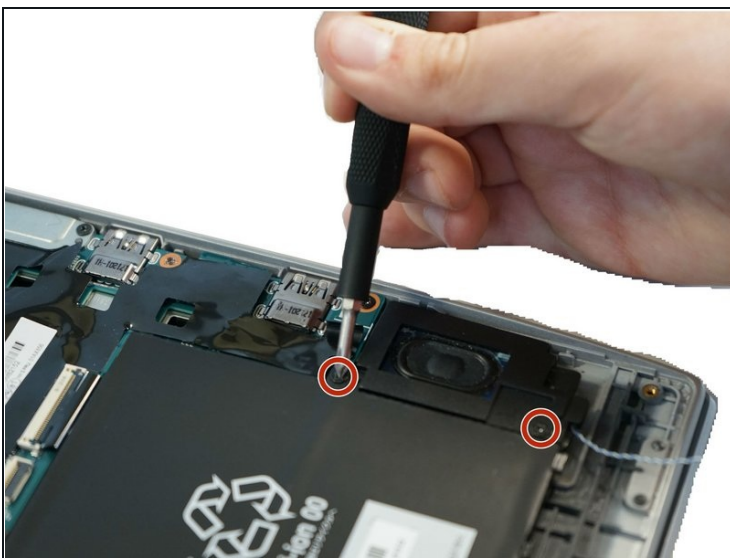
- Remove the back cover.
 - ⓘ A popping sound may occur when the back cover is removed.

Step 4 — Speakers



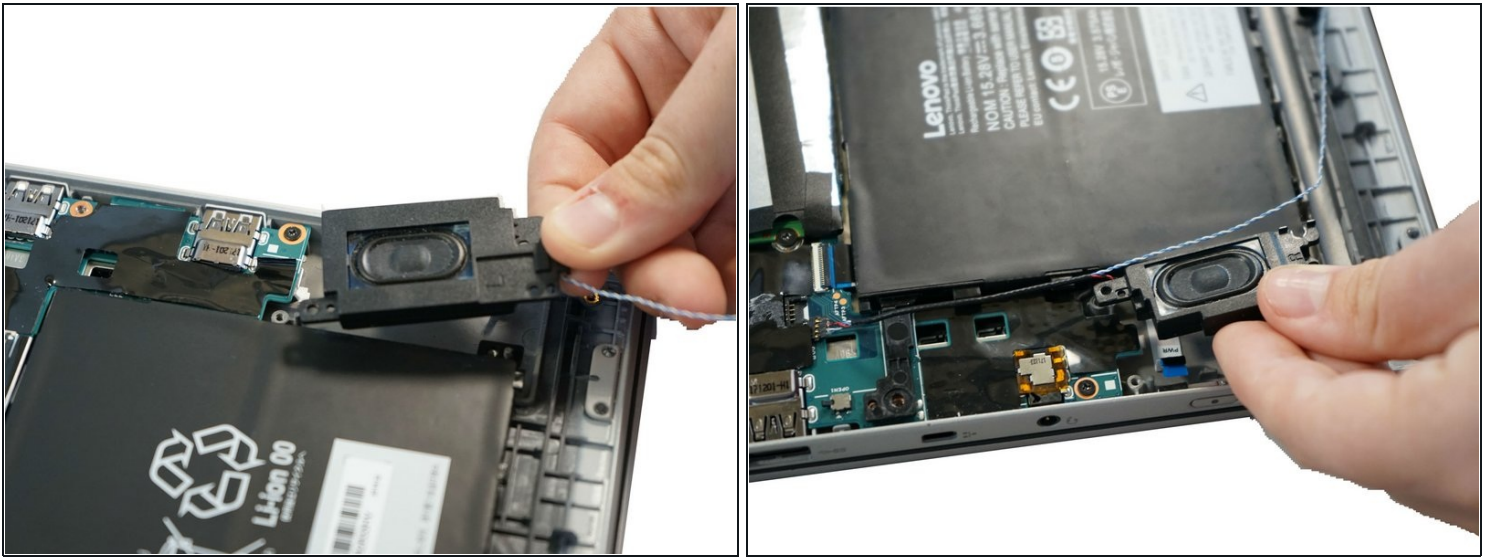
- Follow the ribbon cable that runs from the left speaker to the motherboard.
- Pull the black connector up and release the cable wire by hand.
- ① If needed, pull this connector up using the Pro/ESD/Angled tweezers.

Step 5



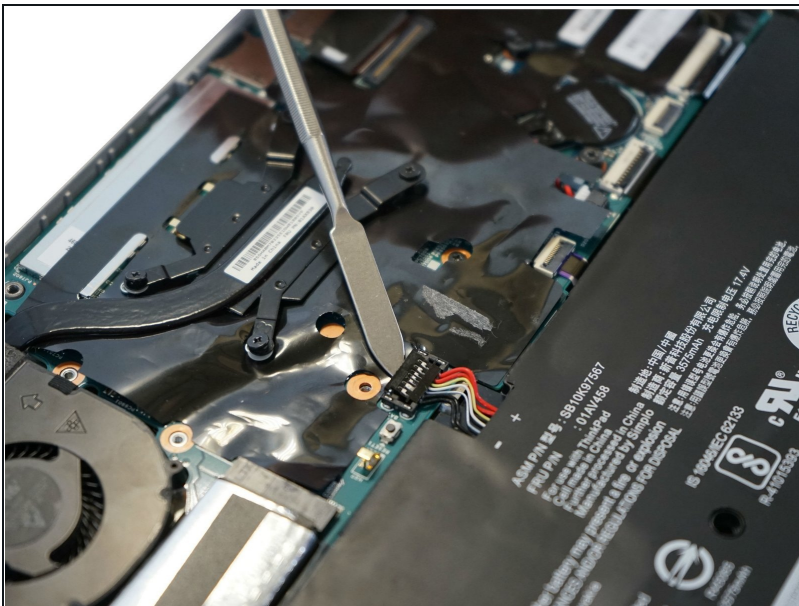
- Remove two 6 mm Phillips #0 screws from each speaker.

Step 6



- Use your fingers to remove the speakers from the device.

Step 7 — Battery



- Use a spudger to pop the ribbon cable that runs from the upper-middle portion of the battery to the motherboard out of the motherboard.

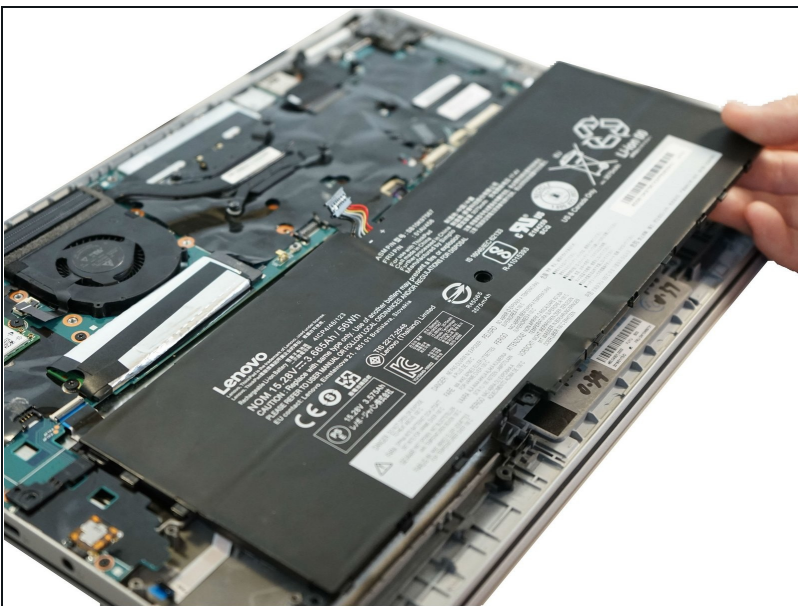
⚠ Do not use a metal spudger as indicated in the photos. The metal spudger should only be used for serious prying power. If it's used on the internal components of a device, it may puncture or damage the components in your device.

Step 8



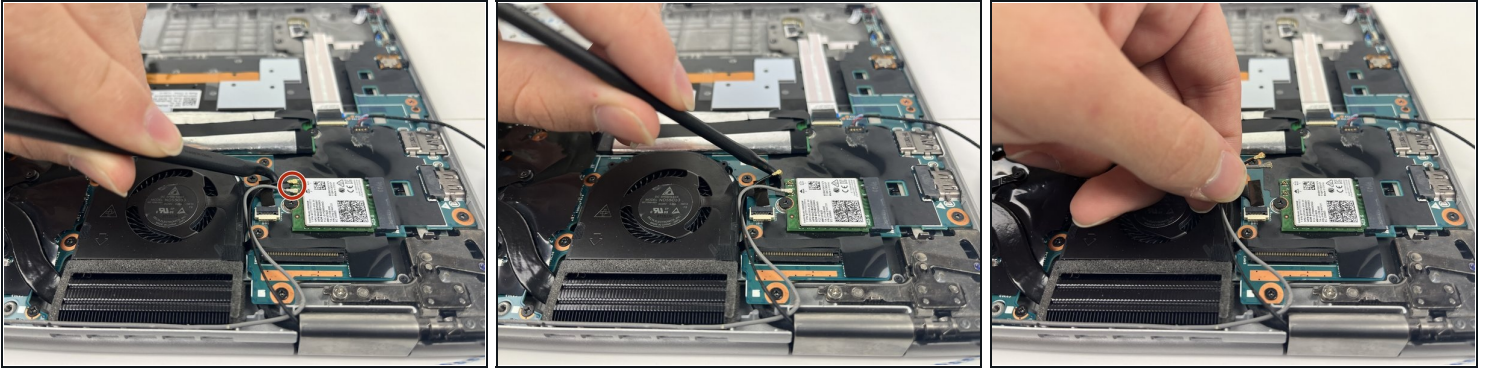
- Use a Phillips #0 screwdriver to remove one 6 mm screw from the bottom-middle portion of the battery.

Step 9



- Remove the battery.

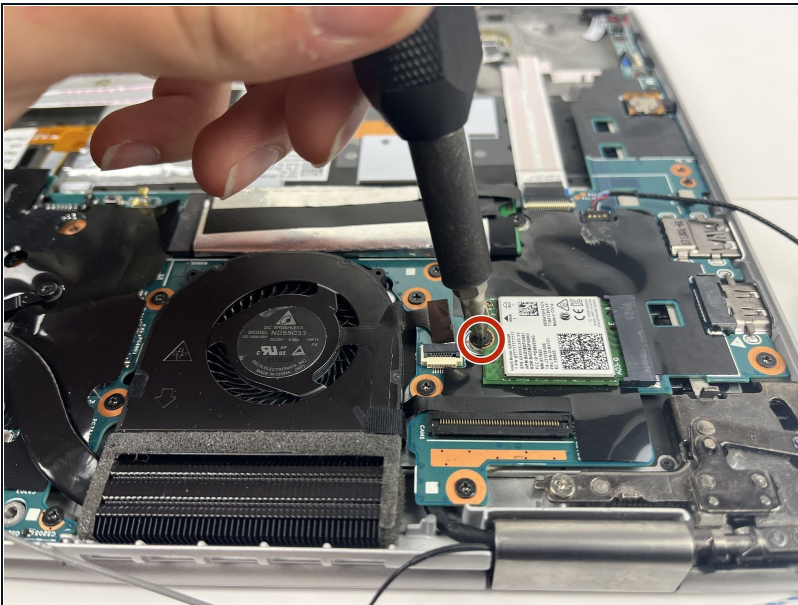
Step 10 — Wi-Fi Card



- Disconnect the gray and black coaxial cables from the Wi-Fi-Card using a spudger.

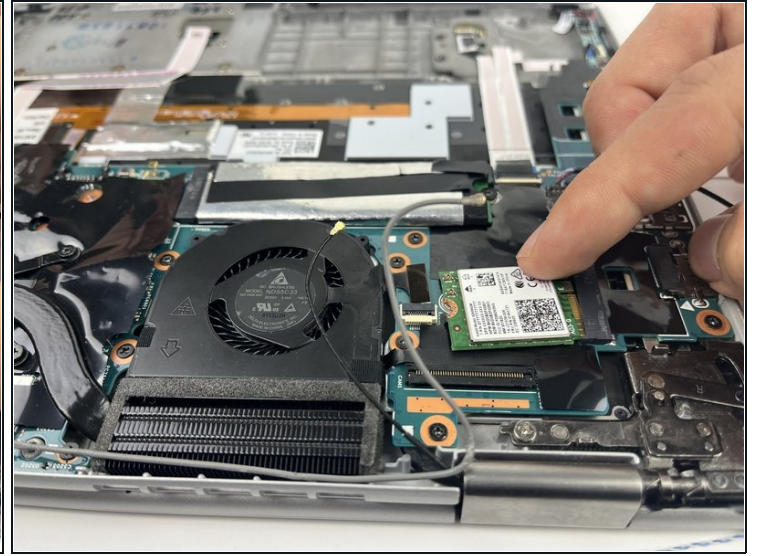
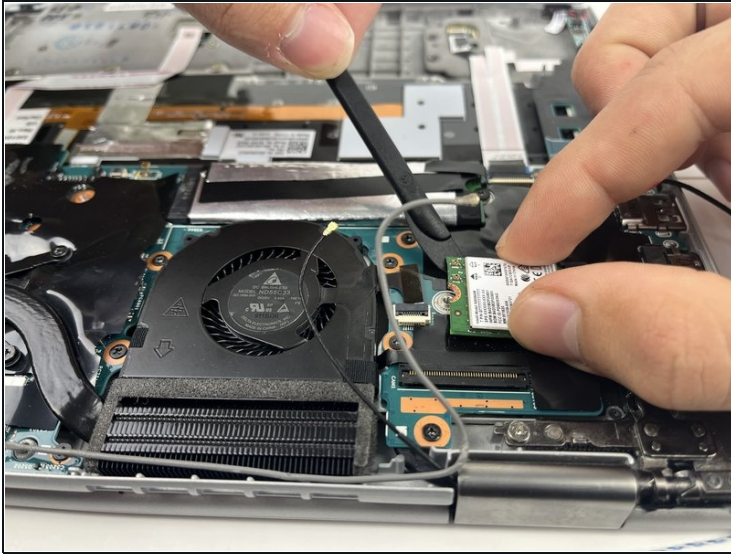
⚠ Be gentle as you're disconnecting these cables. The base can break off the Wi-Fi card if they're pulled on too hard.

Step 11



- Remove the 3 mm screw from the Wi-Fi card using a Phillips #0 screwdriver.

Step 12



- Gently slide the Wi-fi card out from the slot.

To reassemble your device, follow these instructions in reverse order.