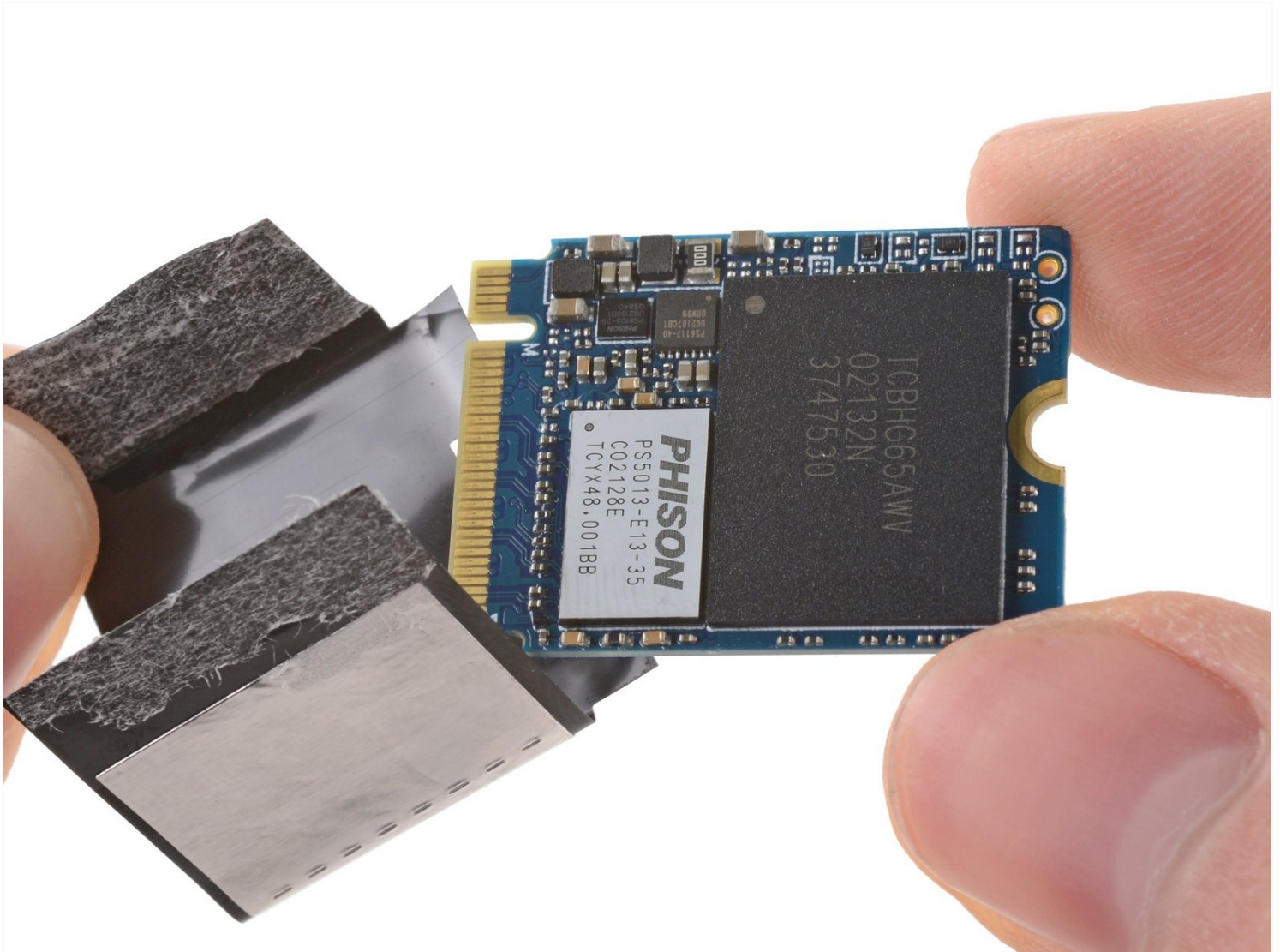




# Steam Deck SSD Replacement

Use this guide to replace or upgrade the SSD in...

Written By: Carsten Frauenheim



# INTRODUCTION

Use this guide to replace or upgrade the SSD in your Steam Deck LCD. The Steam Deck's SSD is a single-sided **M.2 2230**.

To replace or upgrade the SSD in a Steam Deck OLED, follow [this guide](#) instead.

Remember: follow general [electrostatic discharge \(ESD\) safety procedures](#) while repairing your device.

These steps only describe how to physically remove and replace your SSD. **You will need additional software tools and procedures** to install an OS and get the replacement SSD to function as intended.

**Follow Valve's [Steam Deck recovery instructions](#) to recover, repair, or re-image your Steam Deck's SSD with SteamOS.** For installing Windows, official resources can be found [here](#).

**Note:** The Steam Deck's buttons, thumbsticks, and touchpads may not register inputs at first after re-imaging the SSD. Use the touchscreen to follow initial SteamOS setup, allowing the device to download updates. Functionality should return once the Steam Deck restarts.

**Note:** Valve started shipping Steam Decks with refreshed internal designs in early 2023. Your Steam Deck may look different than the one depicted in the photos, but the procedure is the same. [Remove the back cover](#) to check what version you have. An original Steam Deck will have a metallic motherboard shield and a fan with square sides, as [seen here](#). A refreshed Steam Deck will have a black motherboard shield and a fan with curved sides, as [seen here](#).



## TOOLS:

[Phillips #1 Screwdriver](#) (1)  
[Phillips #0 Screwdriver](#) (1)  
[iFixit Opening Picks \(Set of 6\)](#) (1)  
[Tweezers](#) (1)



## PARTS:

[Steam Deck SSD Upgrade Kit](#) (1)  
[Steam Deck SSD Foil Cover](#) (1)

---

## Step 1 — Prepare your Steam Deck for disassembly



- ⚠ Turn on your Steam Deck and allow the battery to discharge below 25% before starting your repairs, as a charged lithium-ion polymer battery can be dangerous if accidentally punctured.
- ⓘ As an extra precaution, Valve recommends putting your Steam Deck into **battery storage mode** within the BIOS before starting any internal repairs. [Read how to do that here.](#)
- Power down your Steam Deck and unplug any cables.
- ⚠ If you have a microSD card installed, **make sure to remove it** before opening the Steam Deck. If you attempt to remove the back cover with it still installed, [it could snap right in half.](#)
- ⓘ During your repair, it can be helpful at times to lay the Steam Deck face-down into its case to protect the thumbsticks and prevent wobble.

## Step 2 — Remove the back cover screws



- Use a Phillips driver to remove the eight screws securing the back cover:
  - Four coarse thread 9.5 mm-long screws
  - Four fine thread 5.8 mm-long screws
- ⓘ Despite the standards, Phillips screwdrivers can vary in size and shape—two drivers labeled as the same size may fit differently in the same screw. Use the size that fits the snuggest into the screw head.
- ⓘ Throughout this repair, [keep track of each screw](#) and make sure it goes back exactly where it came from to avoid damaging your Steam Deck.

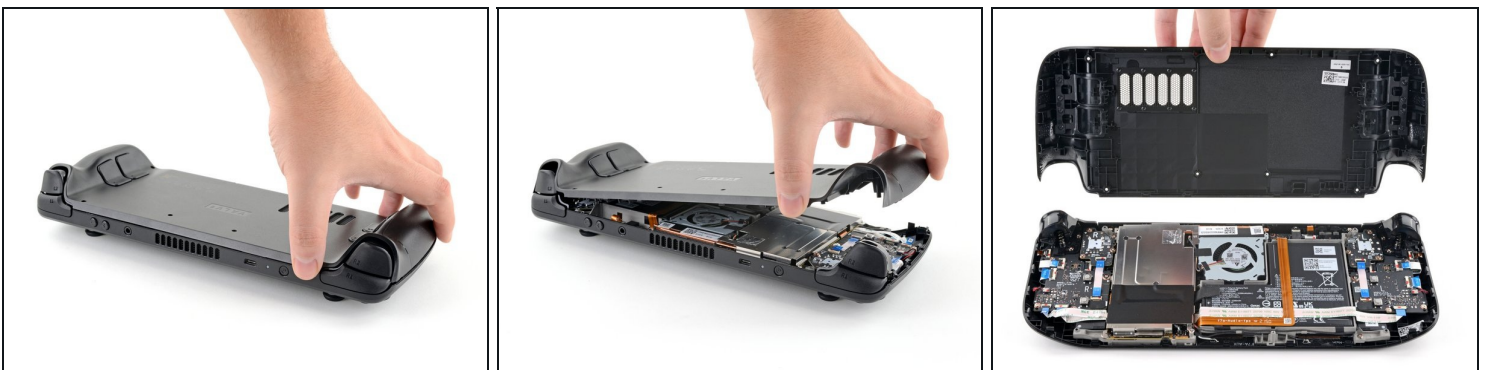


### Step 3 — Unclip the back cover



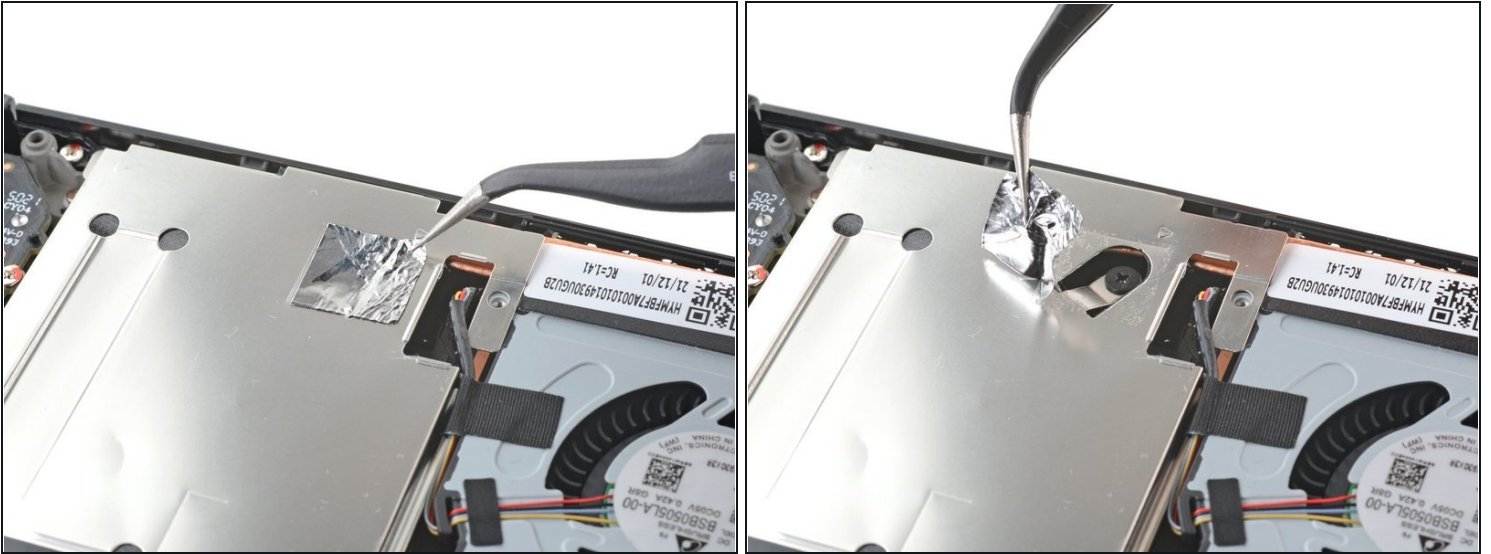
- Insert an opening pick into the thin gap between the back cover and the front shell, along the edge of the right grip.
  - ① If you're having trouble inserting your pick at the grip seam, try starting at either the top or bottom long edges first, then slide the pick towards the grip.
- Pry up on the back cover to release it from the locking clips.

### Step 4 — Remove the back cover



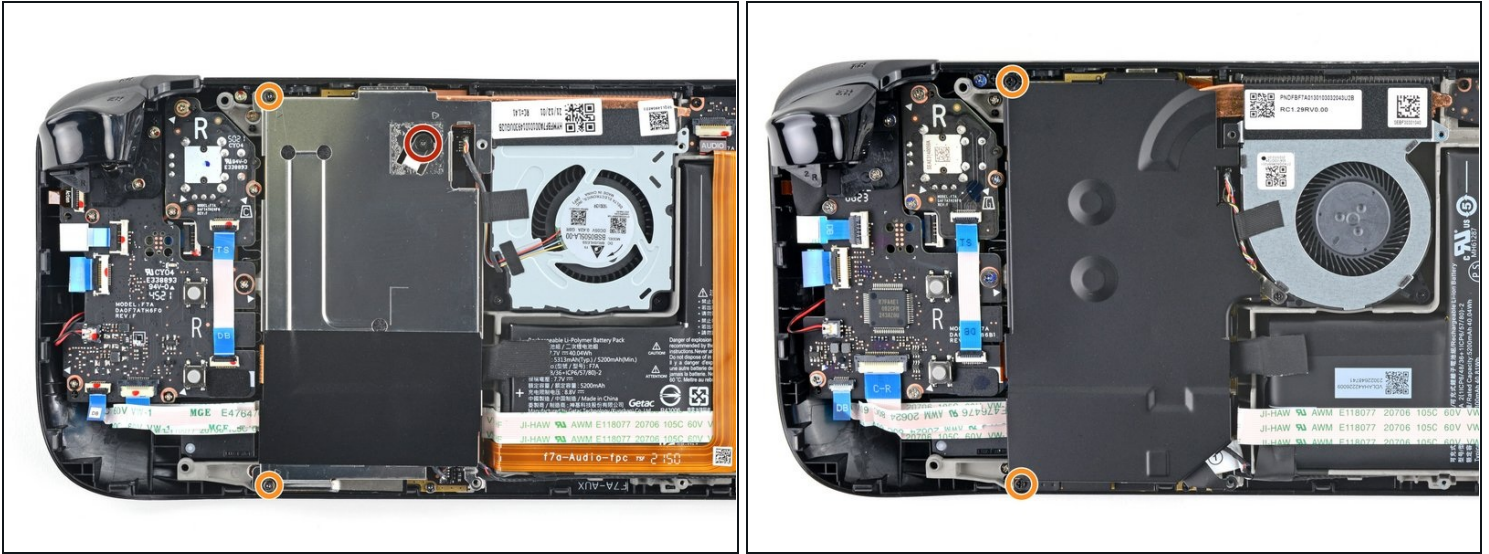
- ① Once the clips are disconnected from one edge, the rest disconnect easily.
- Grip the back cover at the opening you just created and pull it up and away from the device to unclip the long edges.
- Remove the back cover.

## Step 5 — Uncover the hidden shield screw



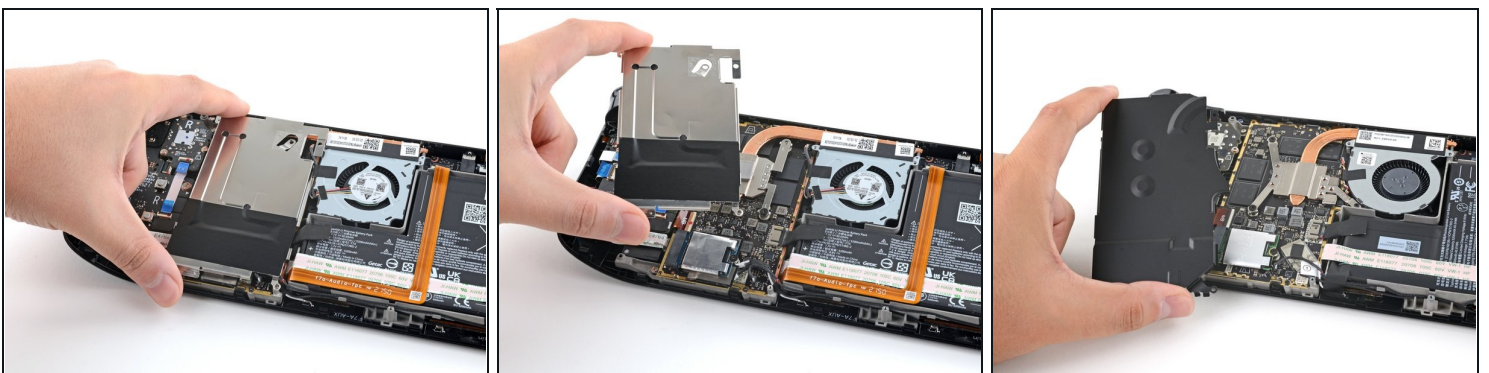
- ① If you have a [refreshed Steam Deck version](#) with the black motherboard cover, skip this step.
- Use a pair of tweezers to remove the piece of foil tape covering the hidden screw on the board shield.
  - ① If possible, try not to rip or tear this tape so it can be reused. If necessary, you can fashion a replacement by cutting a piece of aluminum foil tape to fit.

## Step 6 — Remove the shield screws



- Use a Phillips driver to remove the three screws securing the board shield:
  - One 3.4 mm screw
  - Two 3.7 mm screws
- ① Only the two 3.7 mm screws along the left edge are present in refreshed Steam Decks.

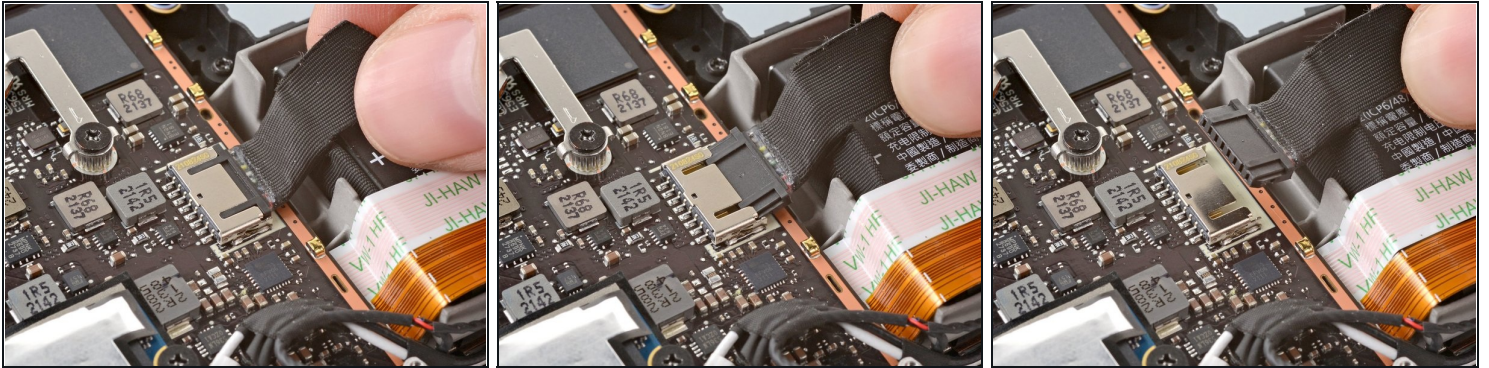
## Step 7 — Remove the shield



- Remove the board shield.
- ① Depending on the age of your Steam Deck, this shield may stick to the thermal pads underneath.
- ★ During reassembly, ensure that the fan cable [lays on the side of the board shield](#) and isn't pinched underneath.

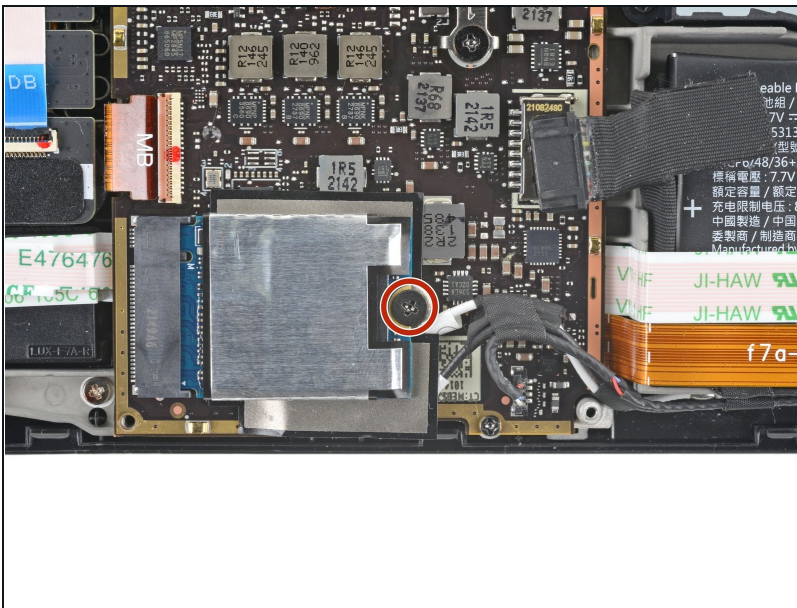


## Step 8 — Disconnect the battery



- Grip the battery cable by its pull tab and pull it directly away from the motherboard to disconnect it.
- ① Alternatively, use the flat end of a spudger or a clean fingernail to gently push the connector out of its socket, then disconnect it completely by hand.

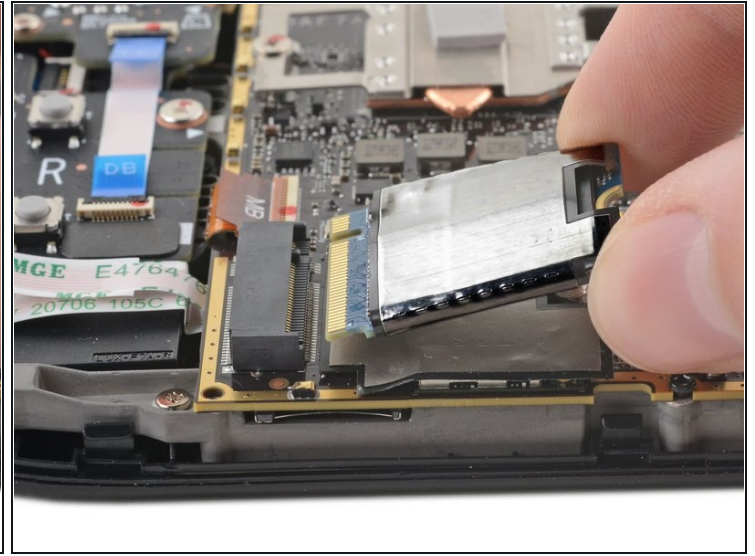
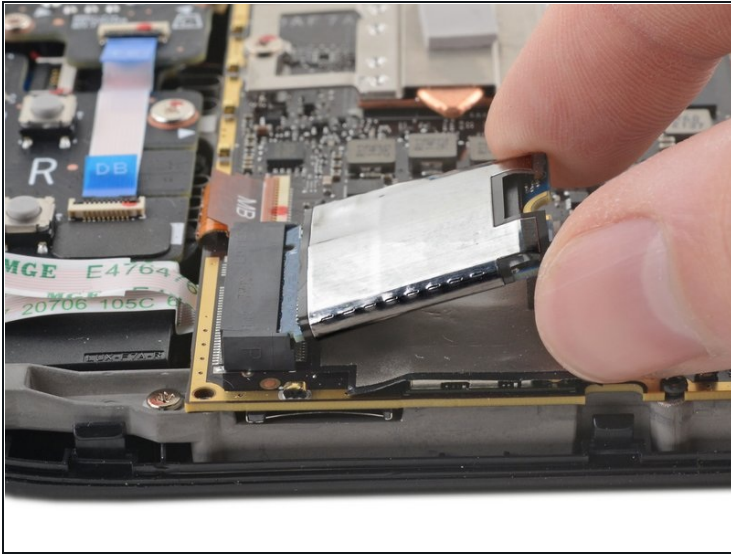
## Step 9 — Remove the SSD screw



- Use a Phillips driver to remove the 3.4 mm screw securing the SSD.

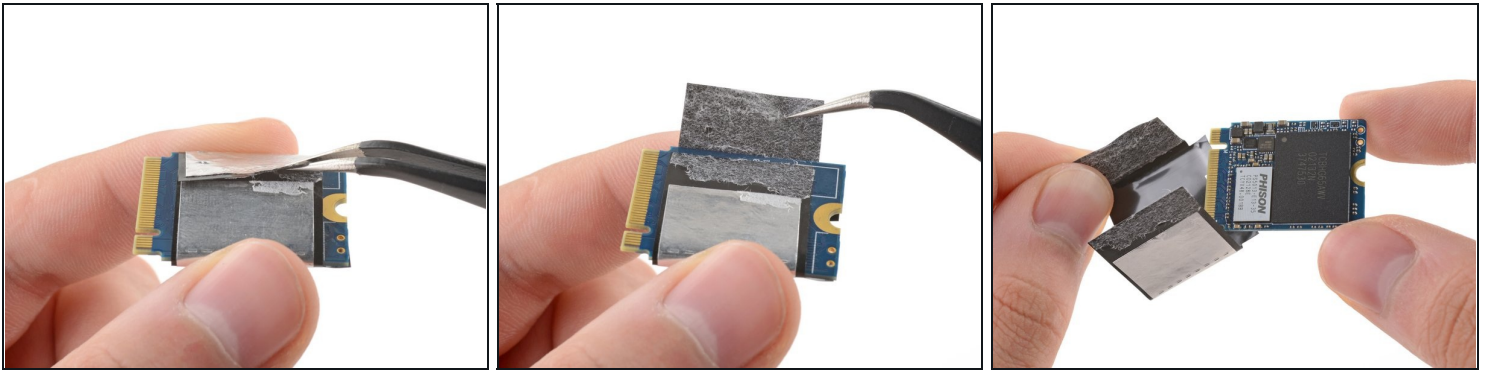


## Step 10 — Remove the SSD



- ① With the SSD screw removed, the SSD will pop up at a shallow angle.
- Grip the end of the SSD and pull it away from its M.2 board connector to remove it.
  - ✦ During reassembly, insert the SSD at a shallow angle into its board connector, and secure it back into its horizontal position with the SSD screw.

## Step 11 — Remove the SSD shielding



- ⓘ The SSD is wrapped in ESD shielding that will need to be transferred to the replacement SSD. Alternatively, replacement shielding can be found [here](#).
- Use a pair of tweezers to slide the shielding off of the SSD.
  - If the shielding feels stuck, use a pair of tweezers to peel off and remove it instead. Take care to keep it in the best condition possible if you want to reuse it.
- Only the SSD remains.
  - ⓘ The Steam Deck uses a single-sided M.2 2230.
- ★ To recover, repair, or re-image your SSD, follow Valve's [Steam Deck recovery instructions](#).
  - ⓘ Note: The Steam Deck's buttons, thumbsticks, and touchpads may not register inputs at first after re-imaging the SSD. Use the touchscreen to follow initial SteamOS setup, allowing the device to download updates. Functionality should return once the Steam Deck restarts.

---

**To reassemble your device, follow these instructions in reverse order.**

**To recover, repair, or re-image your Steam Deck's SSD with SteamOS, follow Valve's [Steam Deck recovery instructions](#).**

Take your e-waste to an [R2 or e-Stewards certified recycler](#).

Repair didn't go as planned? Try some [basic troubleshooting](#), or ask our [Steam Deck answers community](#) for help.