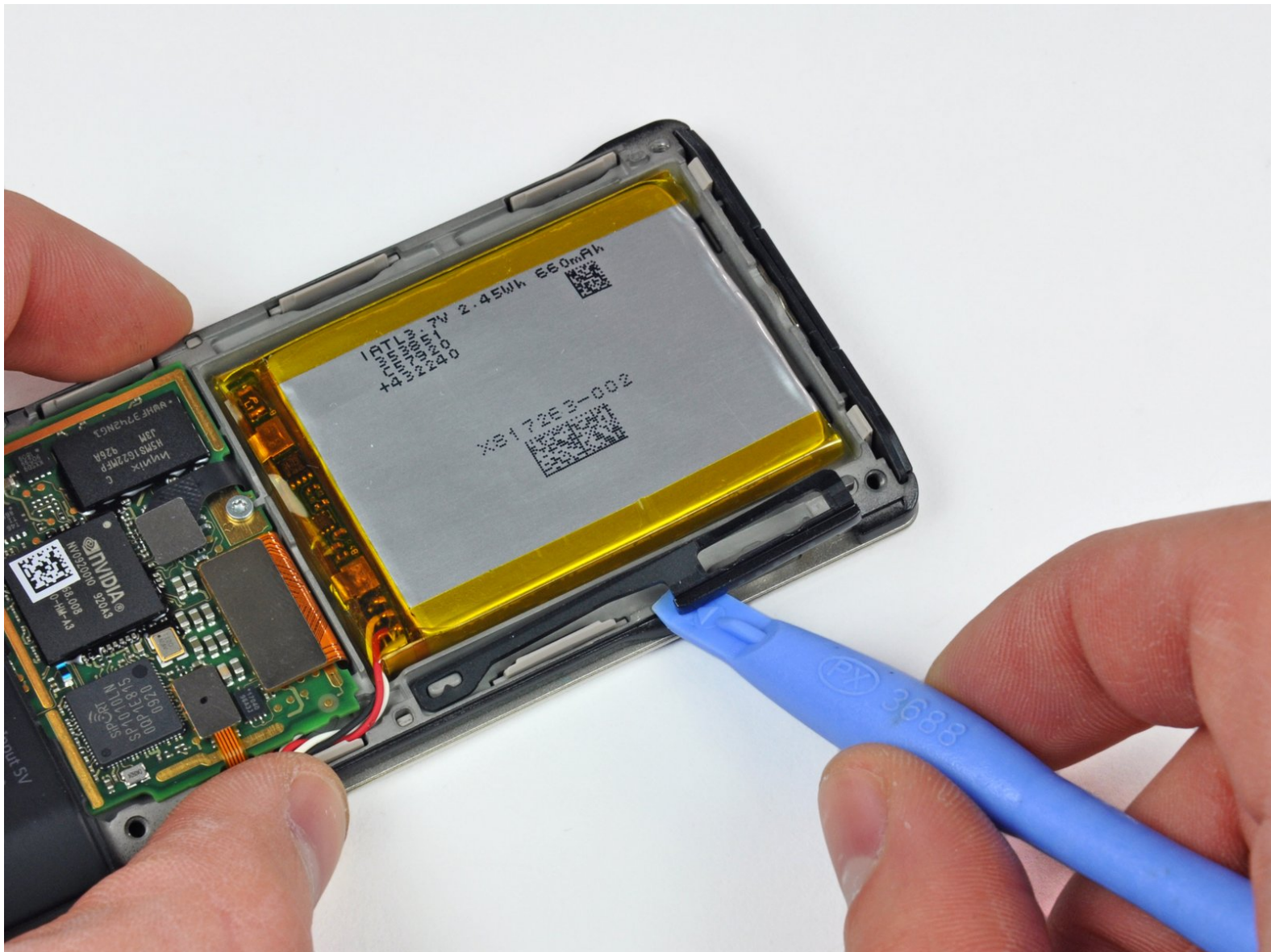




Microsoft Zune HD Controls Sidebar Replacement

Written By: Walter Galan



INTRODUCTION

Unable to raise or lower the volume? Replace the controls sidebar and restore balance to the force.



TOOLS:

- [iFixit Opening Tools](#) (1)
 - [Tri-wing Screwdriver](#) (1)
-

Step 1 — Upper Rear Panel



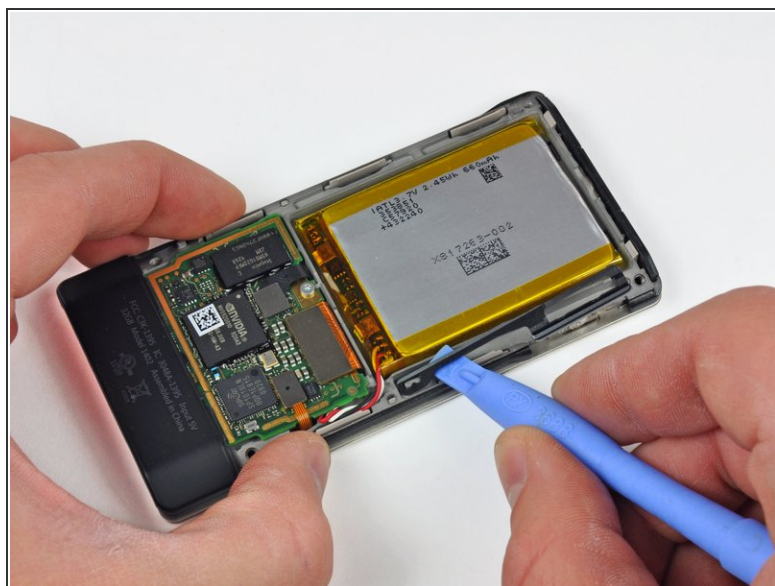
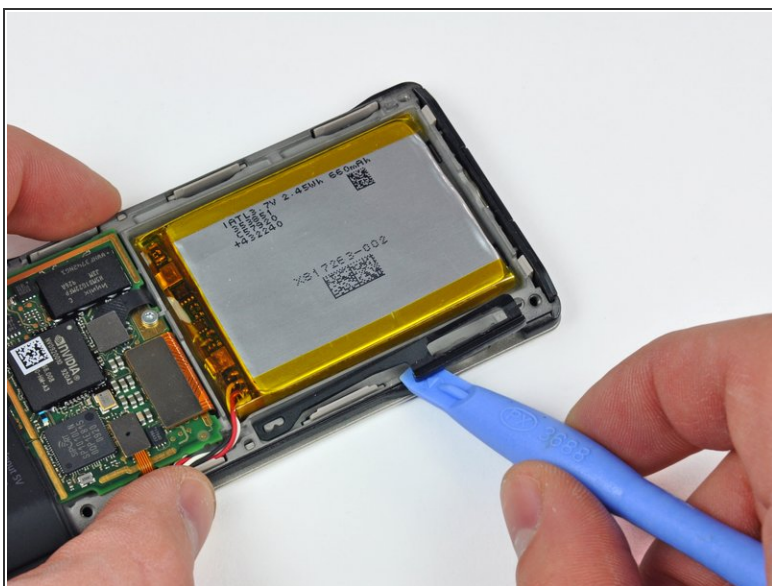
- Remove the four Tri-Wing screws securing the upper rear panel to the inner chassis.

Step 2



- Slightly rotate the top edge of the upper rear panel away from the Zune.
- Lift the upper rear panel straight up off the black plastic lower rear panel.

Step 3 — Controls Sidebar



- Use a Zune opening tool to gently lift the media button lever off the post cast into the inner chassis.

⚠ Try not excessively rotate the media button lever about this post.

To reassemble your device, follow these instructions in reverse order.