



Axe Empire 2.0 OLED Board Replacement

This guide will show you how to remove and replace the OLED board in the Axe Empire 2.0 paintball marker.

Written By: Christopher Ramos



INTRODUCTION

Use this guide to replace a malfunctioning OLED Board in your Axe Empire 2.0 Marker.

The OLED Board is a screen on a paintball marker that allows you to see text and graphics of your devices settings. A malfunctioning OLED Board can cause your marker to make you unable to modify your devices setting, view important information, or unable to turn the device on at all.

A battery leaking battery acid is unsafe so I recommend you wear gloves when getting in the inside of your Axe Empire 2.0.

In step 1 of this guide, you will need to use an old toothbrush and possibly a rag. Since this device is used with players with other people and constantly getting hit with paint, cleaning out the Allen heads will ensure the correct Allen keys will fit.



TOOLS:

- [2.5 mm Allen Key](#) (1)
 - [1.2 mm Allen Key](#) (1)
 - [Pick Tool](#) (1)
 - [Nitrile Gloves 100 Box](#) (1)
 - [Shop Towels or Rags](#) (1)
-

Step 1 — OLED Board



- Use an Allen key to remove four total screws.
 - 2.5 mm screws.
 - 1.2 mm screw.

Step 2



- Press and hold the release button while lightly pulling the spring bolt out.
- ⓘ If the spring bolt has not been serviced with lube after a long time you might need to pull harder. This is a great time to lube the spring bolt.

Step 3



- Remove the two main screws using a 2.5 mm Allen key to separate the air transfer plate from the frame.

Step 4



- Remove the screw using a 2.5 mm Allen key and remove the foregrip from the frame.

Step 5



- Use a 1.2 mm Allen key to remove the screw, and remove the cover to expose the OLED Board.

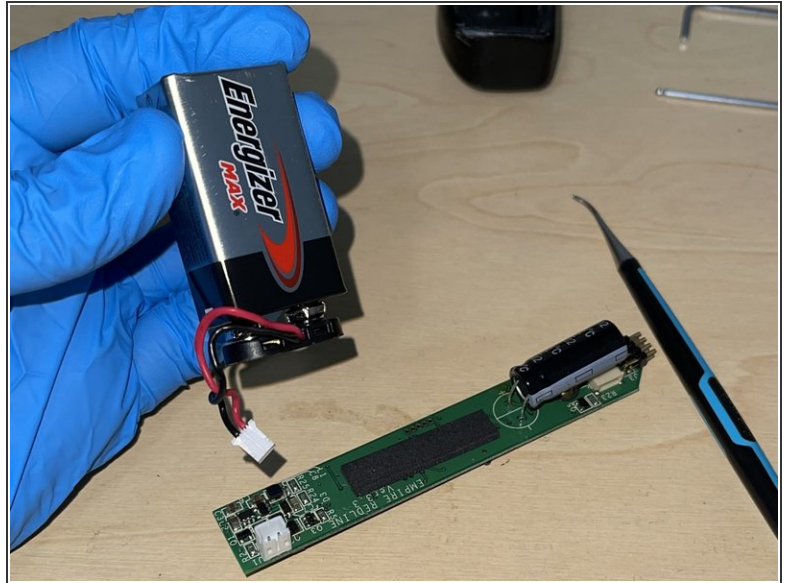
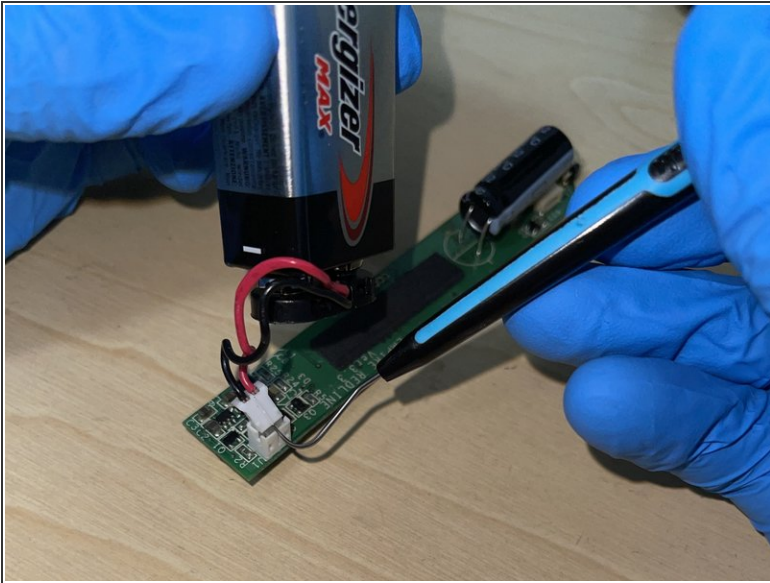
Step 6



- Remove the last screw with a 2.5 mm Allen key to loosen the OLED Board.
- Use a pick tool to carefully remove the battery and OLED Board together out of the foregrip.

⚠ Wear gloves in case battery is defective and leaking acid.

Step 7



- Disconnect the battery from the OLED board.

To reassemble your device, follow these instructions in reverse order.