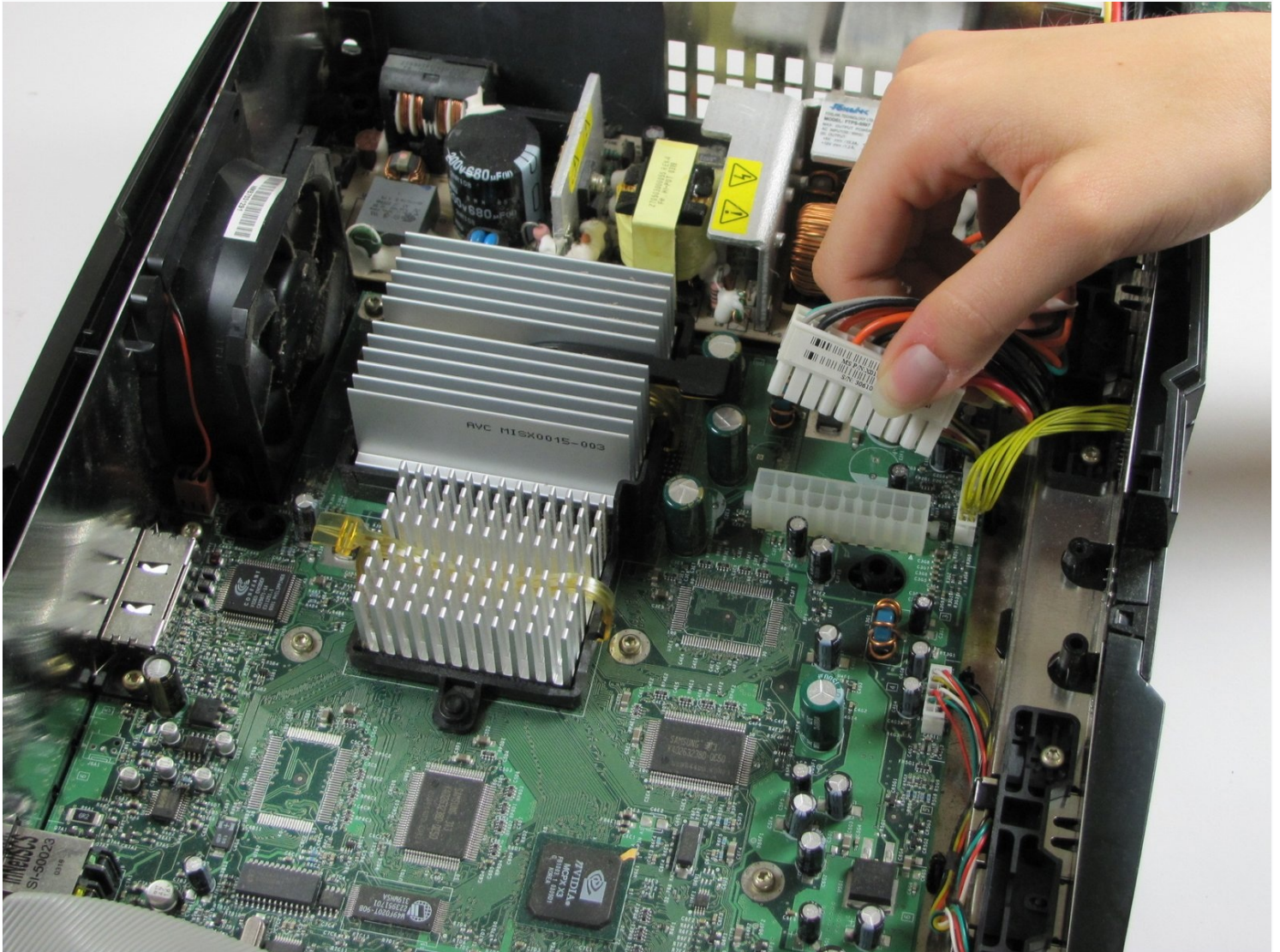




# Xbox Power Board Replacement

This is the guide to replacing the unit that...

Written By: rmarstel



# INTRODUCTION

This is the guide to replacing the unit that deals with power in the Microsoft Xbox. This is potentially the cause of the Xbox not turning on.

---

## TOOLS:

Metal Spudger (1)

TR10 Torx Security Screwdriver (1)

T15 Torx Screwdriver (1)

T20 Torx Screwdriver Bit (1)

## Step 1 — Hard Drive



- ☒ Make sure your Xbox is safely unplugged and is laying on a flat, stable surface.



## Step 2



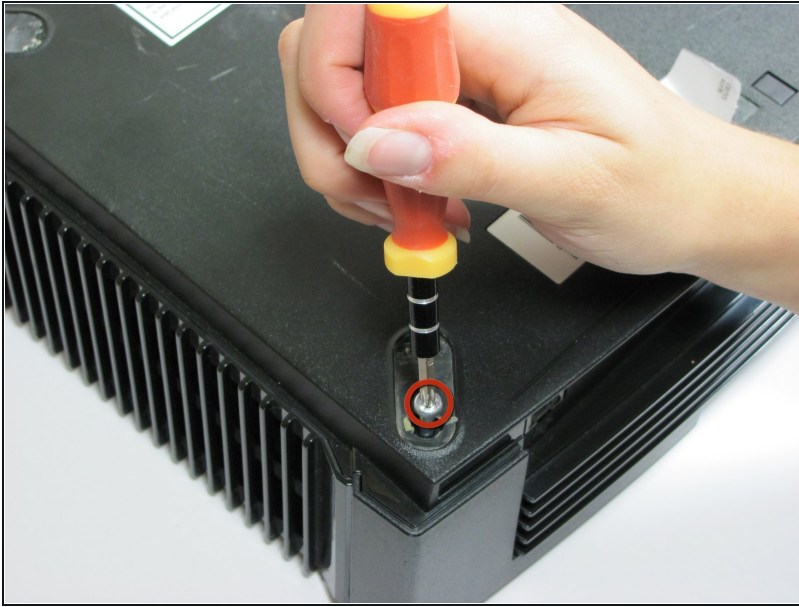
- ① Turn the Xbox over to reveal the four rubber feet.
- Use a metal spudger to pry off the four rubber feet.

## Step 3



- ☑ There are 2 more screws hidden under the two labels on the bottom of the case.
- You can either remove the labels or simply feel for the screw holes through the labels and then cut or punch a hole through them.

## Step 4



- Remove the six T20 Torx screws securing the top cover to the bottom cover.

## Step 5



- Once the bottom and top shells are no longer attached, carefully turn the Xbox right-side-up, lift and remove the top cover.

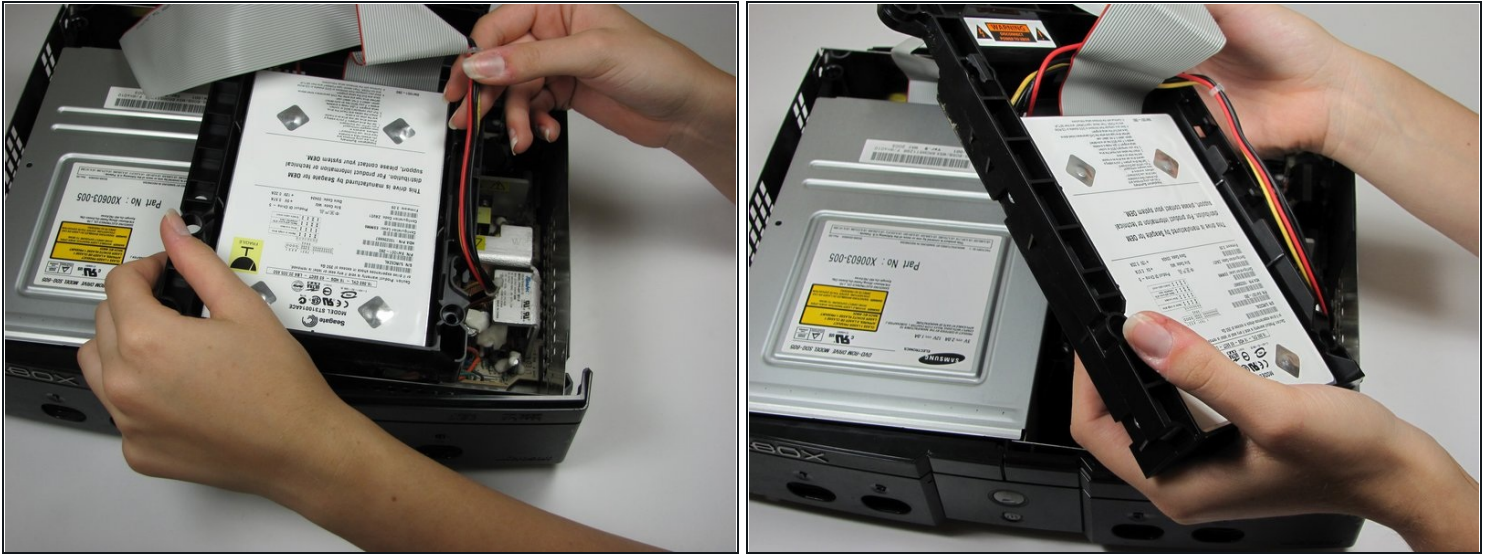
## Step 6



- Remove the three 3 mm T10 screws securing the hard drive to the Xbox.
- ★ There is one screw on the rear left side of the hard drive that is only visible when the IDE ribbon cable is lifted up. The other two are at the front right and left sides of the hard drive.
- ① The screw on the lower left corner of the disk drive is not in the hole that it appears to be in, but rather just closer to the corner.



## Step 7



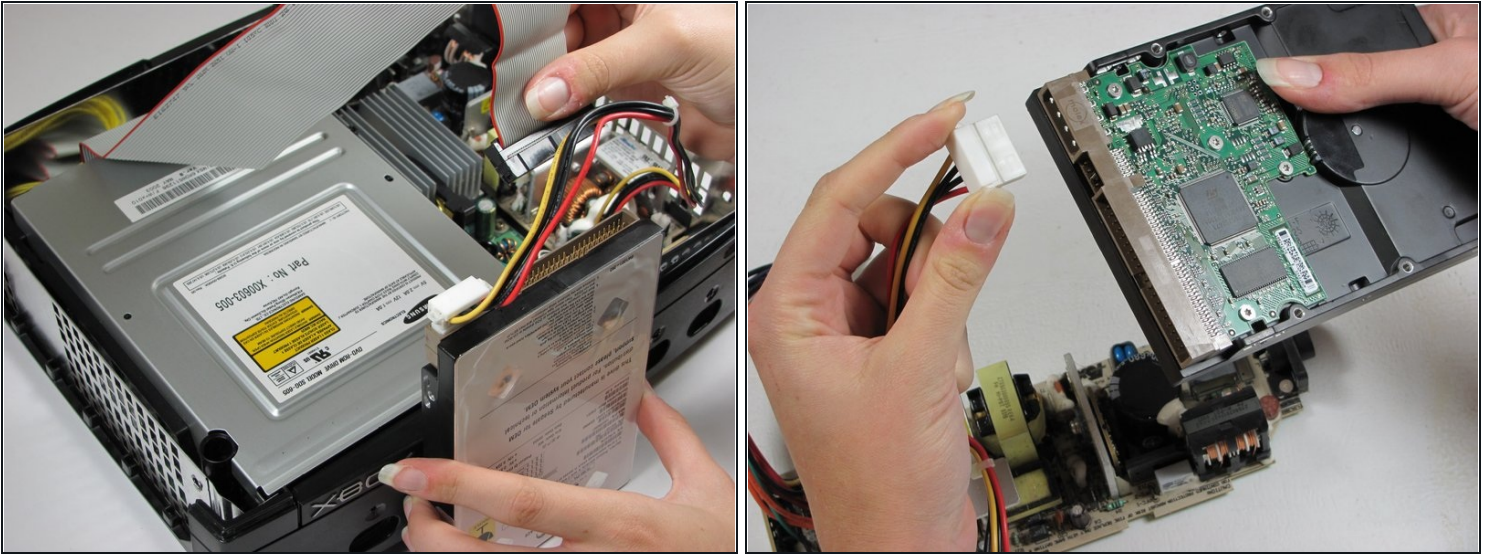
- Free the hard drive power cable from the carrier for sufficient slack to lift the hard drive out.
- Lift the plastic hard drive carrier out of the Xbox case.

## Step 8



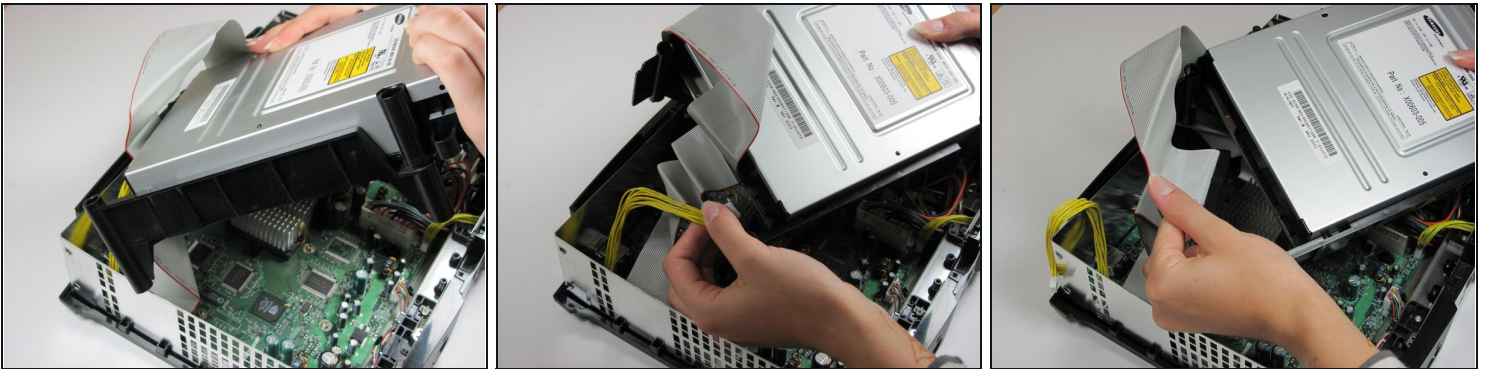
- Remove the four 3.4 mm T15 Torx screws from the plastic hard drive carrier (two screws per side).
- Carefully remove the hard drive from the plastic carrier. Gentle rocking will see the hard drive come out quite easily.

## Step 9



- Pull both the hard drive data ribbon cable and the power cable straight up from the hard drive.
- ⓘ They may be firmly seated, so be careful trying to remove them. **DO NOT** pull the wires as you may damage the cable assembly.

## Step 10 — Disc Drive



- Remove the disk drive. It should come right out.
- Unplug the ribbon cable and yellow cables from back of disk drive.

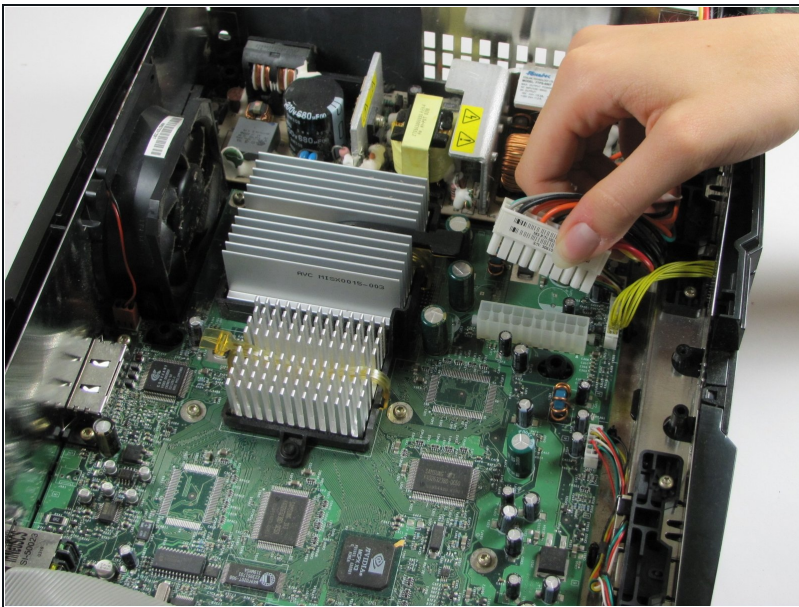


## Step 11



- Pry back the black plastic tabs around the disk drive in order to remove it from its housing. Once removed, set the drive aside.
- ① If you are removing the disk drive in order to gain access to the motherboard underneath, you do not need to remove the plastic housing.

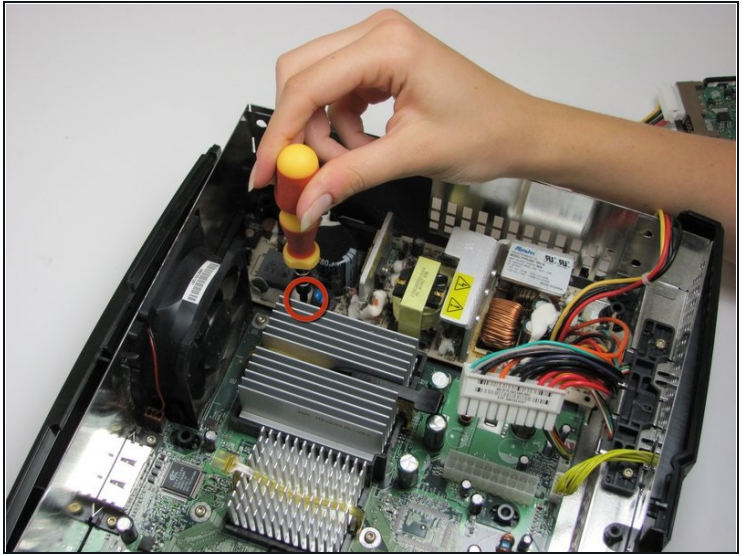
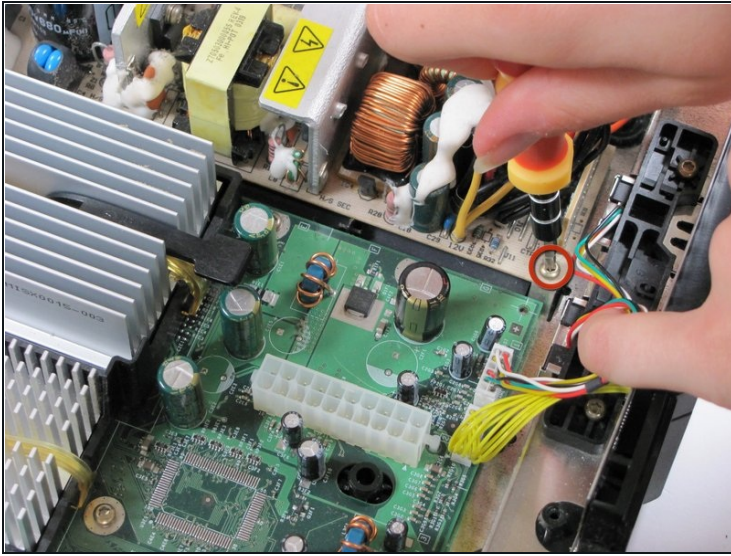
## Step 12 — Power Board



- Unplug the multi-colored power cord from the motherboard. It is in there pretty tightly, so it may take some effort.



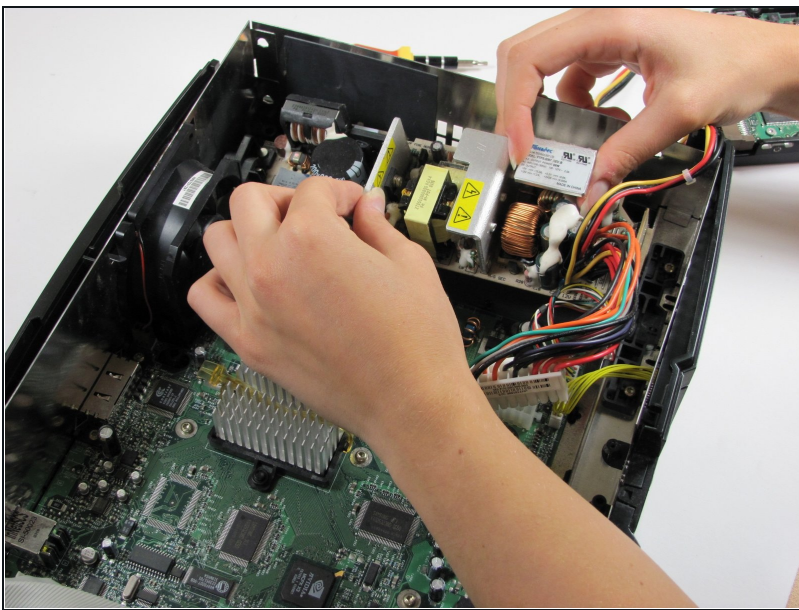
## Step 13



- Using T10 Torx screwdriver, remove two 3mm screws from the tan power supply board.

**⚠ Be very careful not to touch the copper coil or capacitors on the power supply.**

## Step 14



- Remove the power supply and set it aside. It should lift right out.

**⚠ Be very careful not to touch the copper coil or capacitors on the power supply. They may shock you.**

To reassemble your device, follow these instructions in reverse order.

