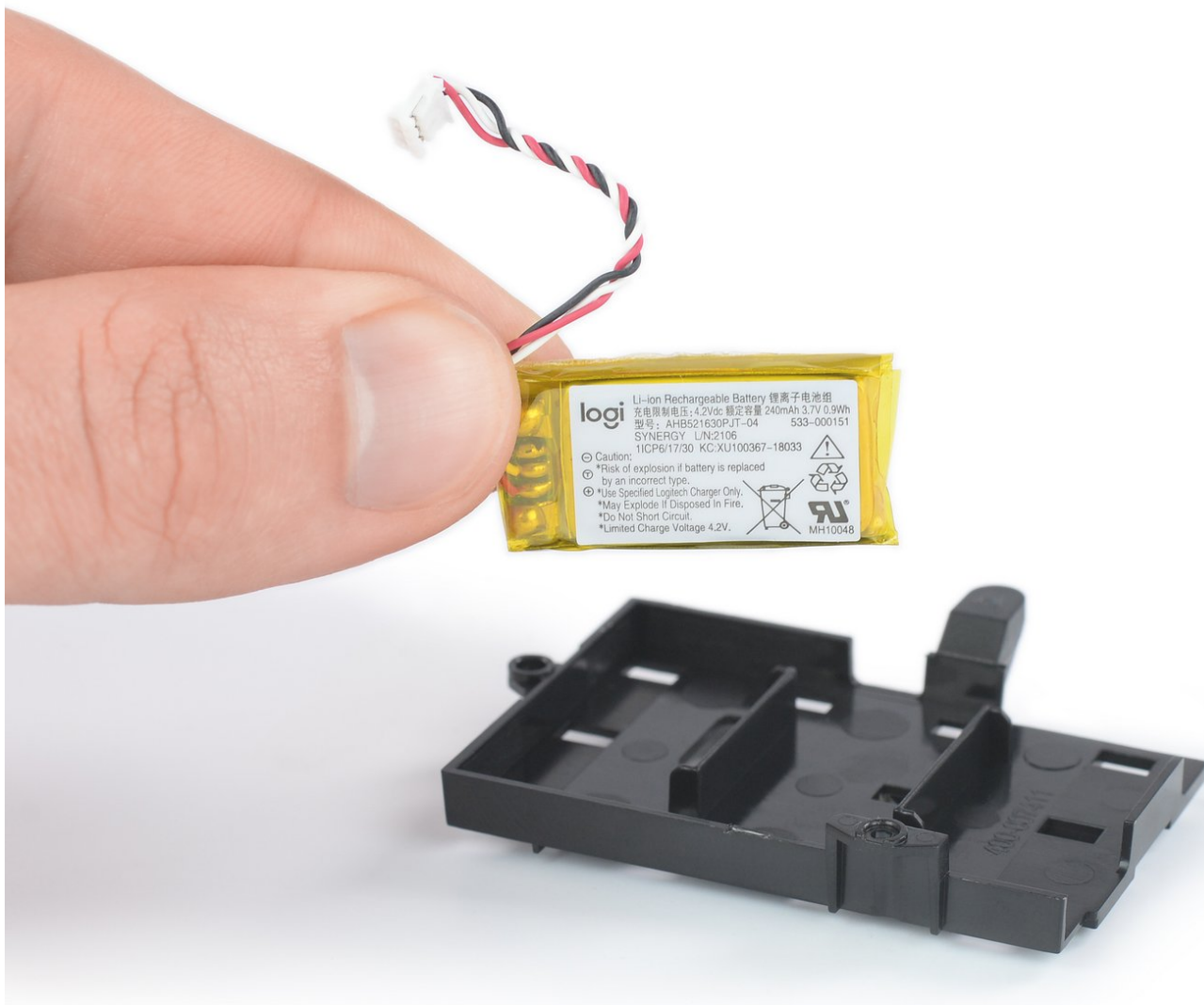




# Logitech G703 Battery Replacement

How to replace a dead or worn out battery in a Logitech G703 wireless gaming mouse.

Written By: Dominik Schnabelrauch



# INTRODUCTION

Use this guide to replace the battery in a Logitech G703 wireless gaming mouse.

If your battery is swollen, [take appropriate precautions](#). For your safety, **discharge your battery below 25%** before disassembling your device. This reduces the risk of a dangerous thermal event if the battery is accidentally damaged during the repair.

This guide requires removing the mouse feet. If you're planning to reuse your existing mouse feet, note that the adhesive needs to be thoroughly heated for them to be cleanly removed.

You might need replacement adhesive to reattach components when reassembling the device.

---

## TOOLS:

- [Isopropyl Alcohol \(90% or Greater\)](#) (1)

*optional*

- [iOpener](#) (1)
- [iFixit Opening Picks \(Set of 6\)](#) (1)
- [Spudger](#) (1)
- [Microfiber Cleaning Cloths](#) (1)

*optional*

- [ESD Safe Tweezers Blunt Nose](#) (1)
  - [Phillips #00 Screwdriver](#) (1)
-

## Step 1 — Turn off the mouse



- Before you begin, flip the mouse's power switch into the red **OFF** position.

## Step 2 — Heat the mouse foot



- ⓘ If you're planning to reuse your existing mouse feet, note that the adhesive needs to be thoroughly heated to cleanly remove them.
- [Heat an iOpener](#) and apply it to the bottom mouse foot for two minutes.
- ⓘ A hair dryer or heat gun may also be used, but be careful not to overheat the mouse—the internal battery is susceptible to heat damage.



### Step 3 — Separate the mouse foot adhesive



- Slide an opening pick under an edge of the bottom mouse foot.
  - ⓘ Go slowly, and make sure the pick is underneath both the foot and its adhesive layer if you want to reuse the foot. It's easy to separate the foot from its adhesive.
  - ⓘ If the foot feels stuck, apply more heat before continuing.
- Slide the pick under the rest of the foot until you can lift it off the mouse.
- Remove the foot.
- Repeat the procedure to remove the top mouse foot.

## Step 4 — Clean off the old adhesive



-  If the adhesive separated from the foot:
- Slide the flat end of a spudger under an edge of the adhesive. If the adhesive seems stuck, you may need to heat the adhesive further.
  - Peel the adhesive off.
-  Before installing new feet or reinstalling old ones, wipe away any adhesive residue from the mouse with a lint-free cloth and high-concentration isopropyl alcohol.

## Step 5 — Remove the case screws



- Use a Phillips screwdriver to remove the four 5.4 mm screws securing the two halves of the mouse together.



## Step 6 — Start separating the mouse halves



- ⓘ There are clips in front of the mouse wheel holding the two halves together. It is easiest to pull the halves apart at the back of the mouse and to open the clips in the front afterwards to separate them.

⚠ Don't completely separate the two halves yet—they're still tethered together by a delicate cable.

- Grasp the mouse case at the back and pull the two halves apart slightly, so there's a gap at the back of the mouse.

## Step 7 — Unclip the mouse case



- i** The front of the mouse is held together by plastic clips. They can be particularly stubborn and may require some force to pull apart. Apply steady, slowly increasing pressure to force the halves away from each other.
- Insert a spudger into the small gap between the top and the bottom mouse case right above the charging port.
  - Pry open the mouse clips by tilting the spudger upwards to separate the two mouse halves.

**⚠** The mouse halves are still tethered together by a delicate cable.

## Step 8 — Disconnect the interconnect cable



- Use the flat end of a spudger to gently lift the black sliding lock on the interconnect cable socket until it stops and the cable is no longer locked in.
- Slide the interconnect cable out of its socket on the motherboard.

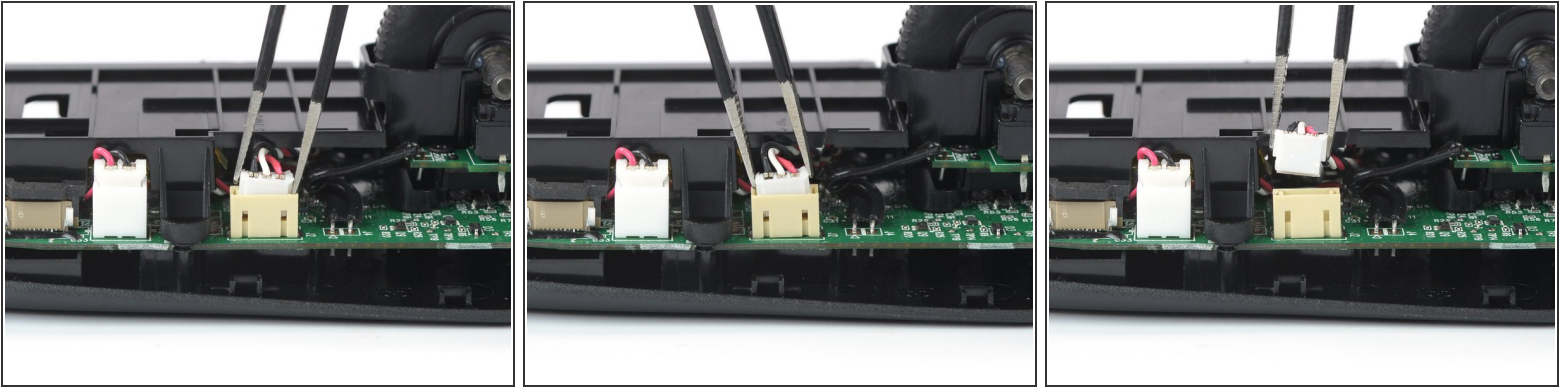
## Step 9 — Remove the top half of the mouse



- Remove the top half of the mouse.

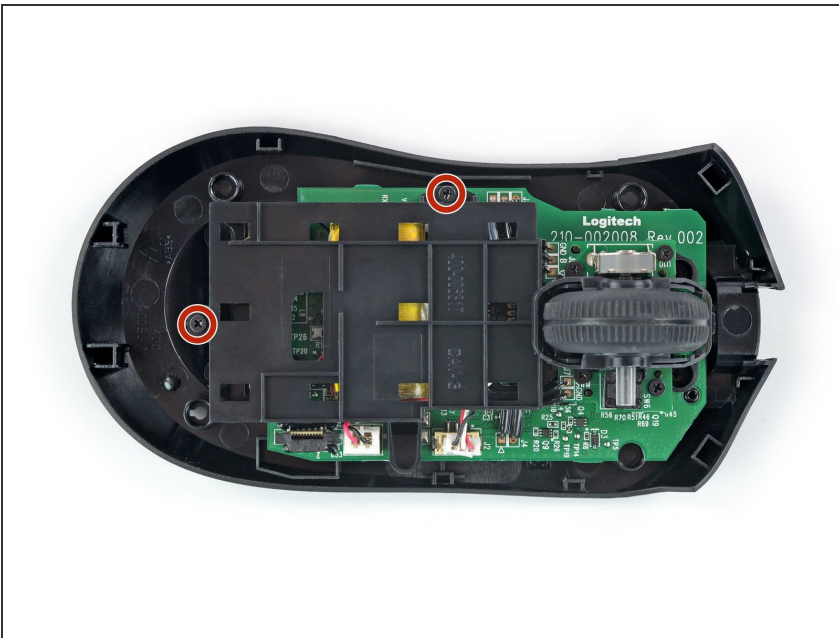


## Step 10 — Disconnect the battery



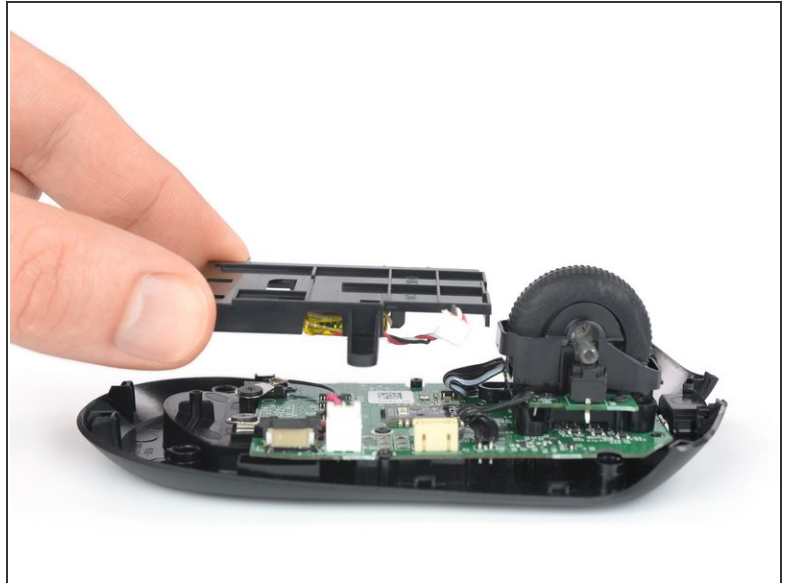
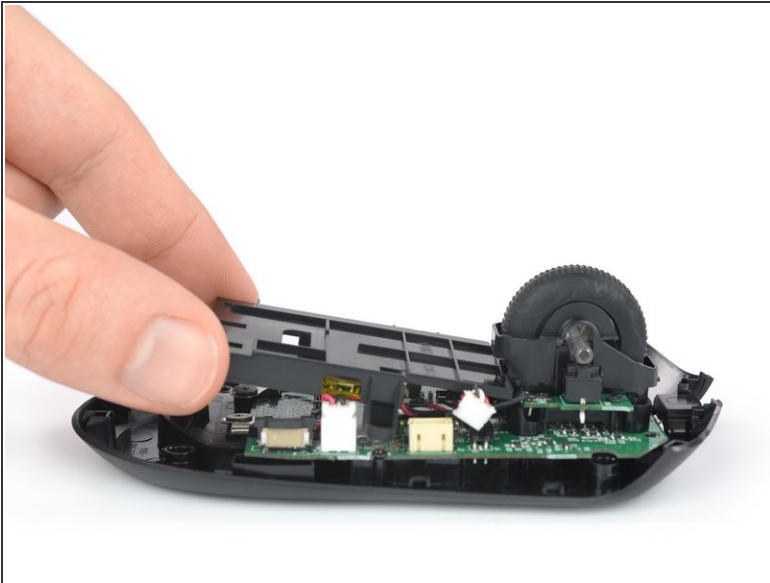
- Use a pair of blunt tweezers to grasp the sides of the battery connector.
- Pull the connector up and out of its socket, gently rocking it back and forth to loosen the clips securing it.

## Step 11 — Unscrew the battery housing



- Use a Phillips screwdriver to remove the two 3.4 mm screws securing the battery housing to the bottom half of the mouse.

## Step 12 — Remove the battery housing



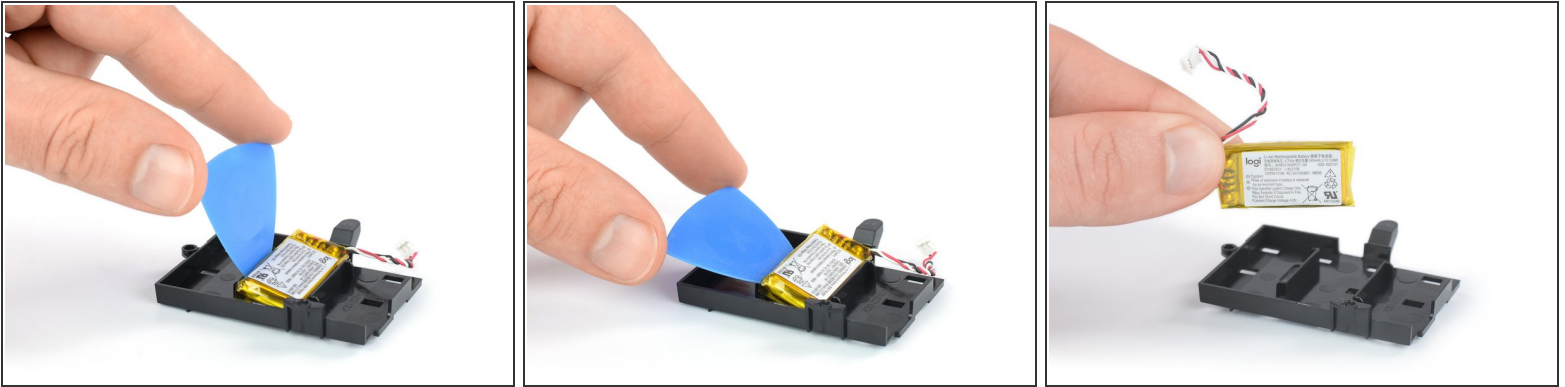
- Remove the battery housing.

## Step 13 — Heat the battery adhesive



- [Heat an iOpener](#) and apply it to the back of the battery housing for two minutes.
- ⓘ A hair dryer or heat gun may also be used, but be careful not to overheat the battery as it is susceptible to heat damage.

## Step 14 — Remove the battery



- Insert an opening pick between the long edge of the battery and its housing opposite the battery cable.
- Slide the opening pick under the battery and lift up to pry the battery off of its housing.

**⚠** Make sure you push **underneath** the battery and not **into** it. Take care not to puncture or bend the battery with your tool—a punctured or bent battery may leak dangerous chemicals or cause a thermal event.

**i** If you encounter significant resistance, pause and heat the adhesive further.

- Remove the battery.

**⚠** Do not reuse the battery after it has been removed, as doing so is a potential safety hazard. Replace it with a new battery.

**✦** It is likely you can reuse the old adhesive with the new battery. If you wish to replace the adhesive instead, remove the old adhesive and wipe away any adhesive residue with a lint-free cloth and high-concentration isopropyl alcohol.

If possible, turn on your device and test your repair before installing new adhesive and resealing.

Secure the new battery with pre-cut adhesive or double-sided adhesive tape. In order to position it correctly, apply the new adhesive into the device at the places where the old adhesive was located, not directly onto the battery. Press the new battery firmly into place.

Compare your new replacement part to the original part—you may need to transfer remaining components or remove adhesive backings from the new part before installing.

For optimal performance, **calibrate your newly installed battery**: Charge it to 100% and keep charging it for at least 2 more hours. Then use your device until it shuts off due to low battery. Finally, charge it uninterrupted to 100%.

**To reassemble your device, follow the above steps in reverse order.**

Take your e-waste to an [R2 or e-Stewards certified recycler](#).

Repair didn't go as planned? Check out our [Answers community](#) for troubleshooting help.