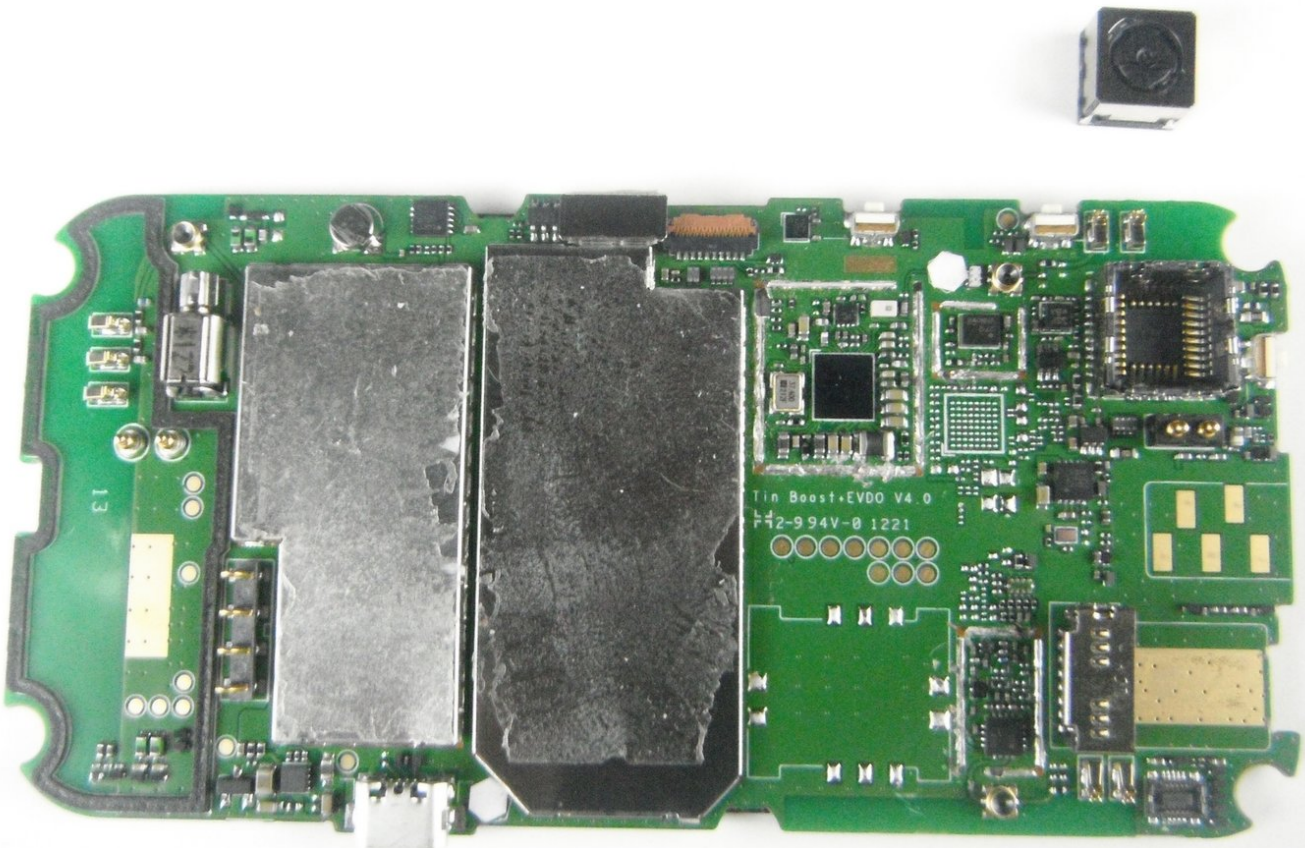




Motorola Defy XT Camera Replacement

This guide shows the steps necessary to remove and install an integrated camera in the Motorola Defy XT mobile phone.

Written By: Mustapha Nadri



INTRODUCTION

This guide shows the steps necessary to remove and install an integrated camera in the Motorola Defy XT mobile phone.

The Motorola Defy XT model has been discontinued.



TOOLS:

- [T4 Torx Screwdriver](#) (1)
 - [iFixit Opening Tools](#) (1)
-

Step 1 — Camera



- Locate the opening on the corner of the Motorola Defy XT mobile phone.
- Wedge the Plastic Opening Tool between the back cover and the body of the phone.

Step 2



- Once wedged in the opening, gently pry around the phone until back cover lifts off.

Step 3



- Remove the back cover and locate the battery.
- Insert the opening tool beneath the battery and lightly push upward.

Step 4



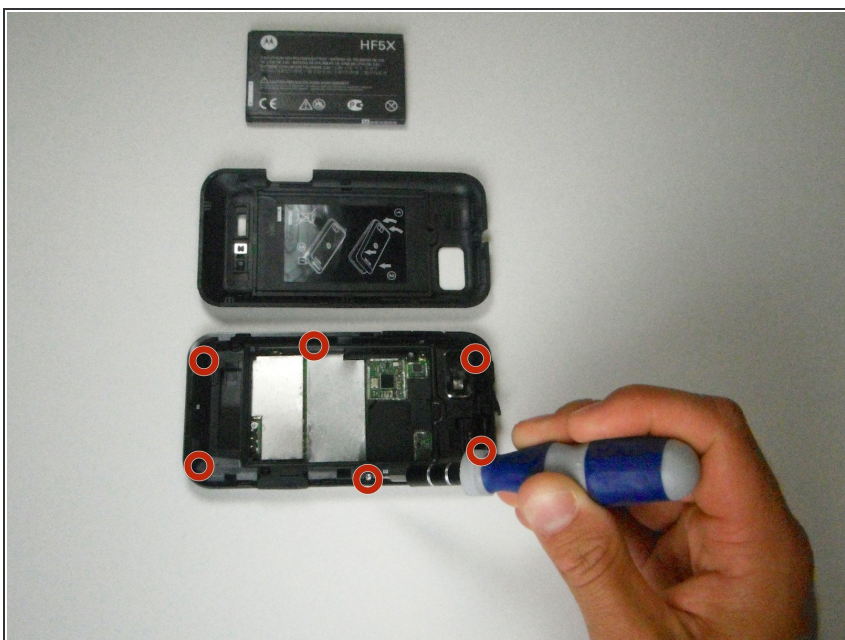
- Locate the SD card beneath the plastic cover in the corner.
- Use a Plastic Opening Tool to hook the edge of the SD card

Step 5



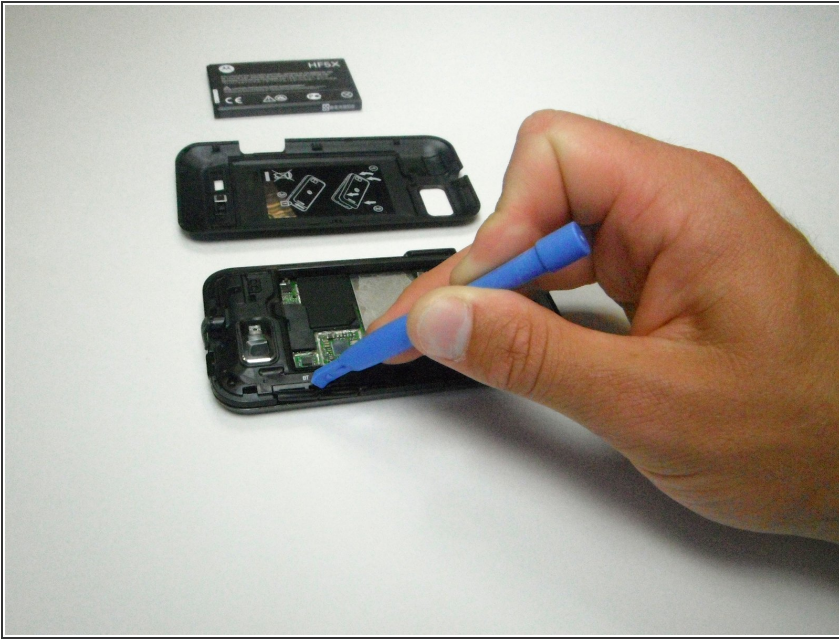
- Push the SD card straight out.

Step 6



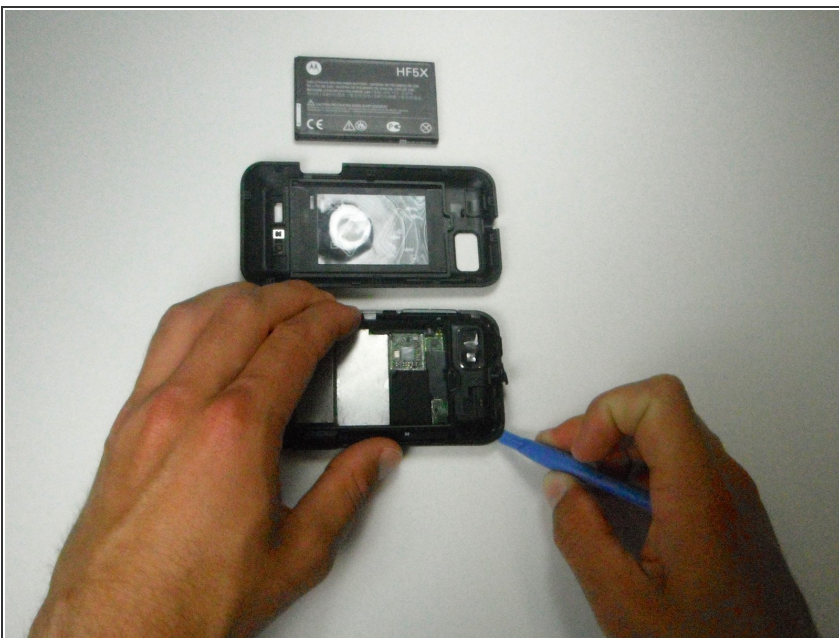
- Use the T4 Torque Driver to remove all 6 of the 3mm diameter screws on the outside edges of the phone.

Step 7




- Wedge the Plastic Opening Tool under the inner side of the volume buttons.
- Pop the volume buttons out of the phone.

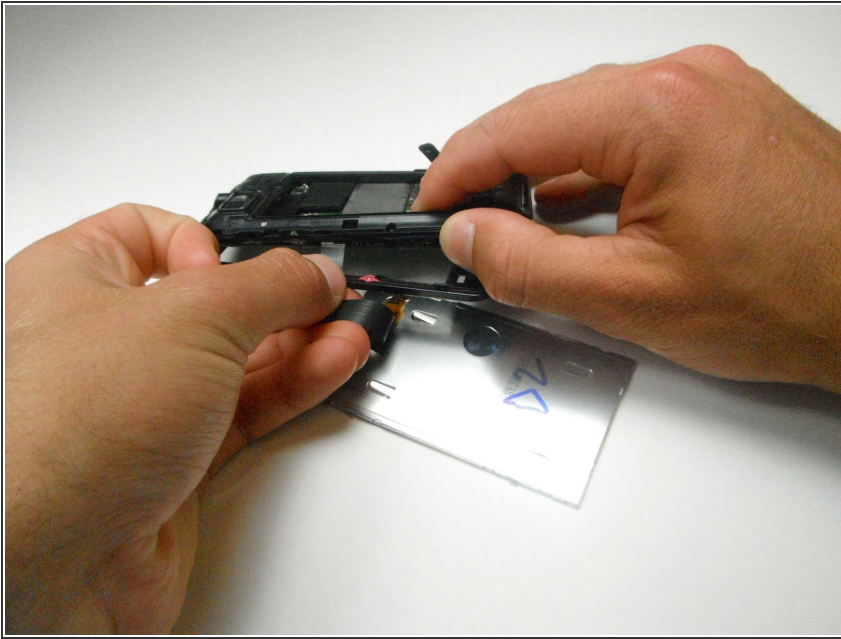
Step 8



- Locate the base of the motherboard.
- Slide the Plastic Opening Tool along the base of the motherboard to separate it from the phone.
- Gently guide the two pieces apart with upward motion.

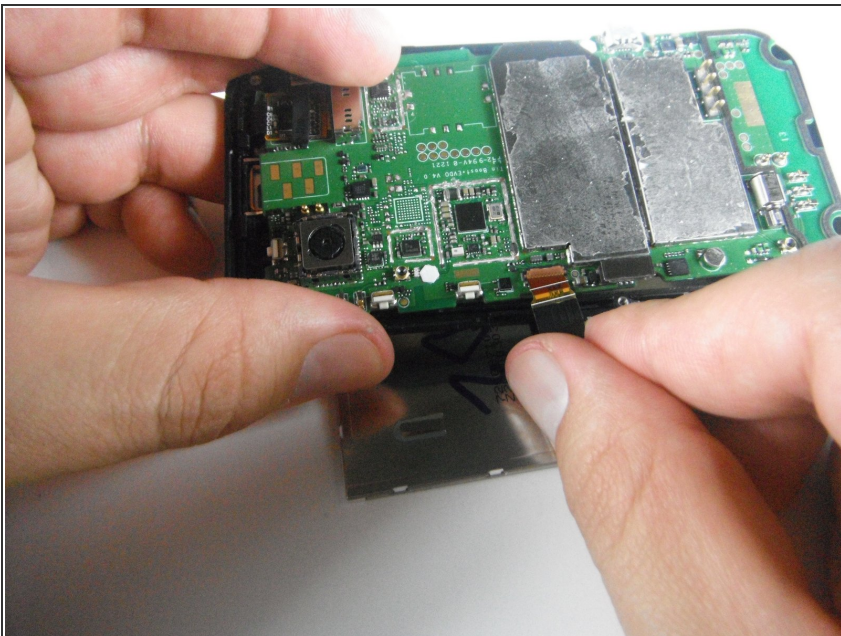
 Caution: Do not damage the ribbon that is holding both pieces

Step 9



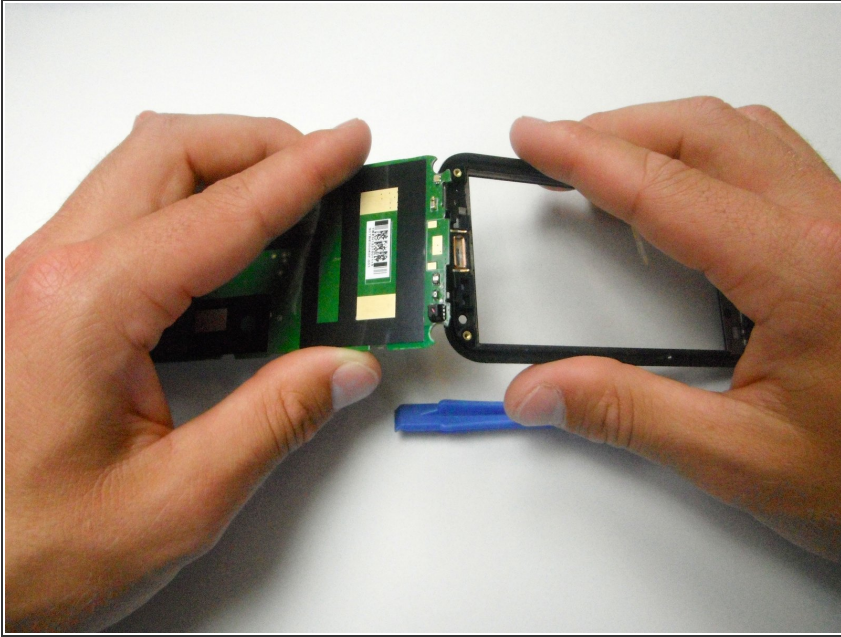
- Disconnect the ribbon from the frame.
- Remove the screen.

Step 10



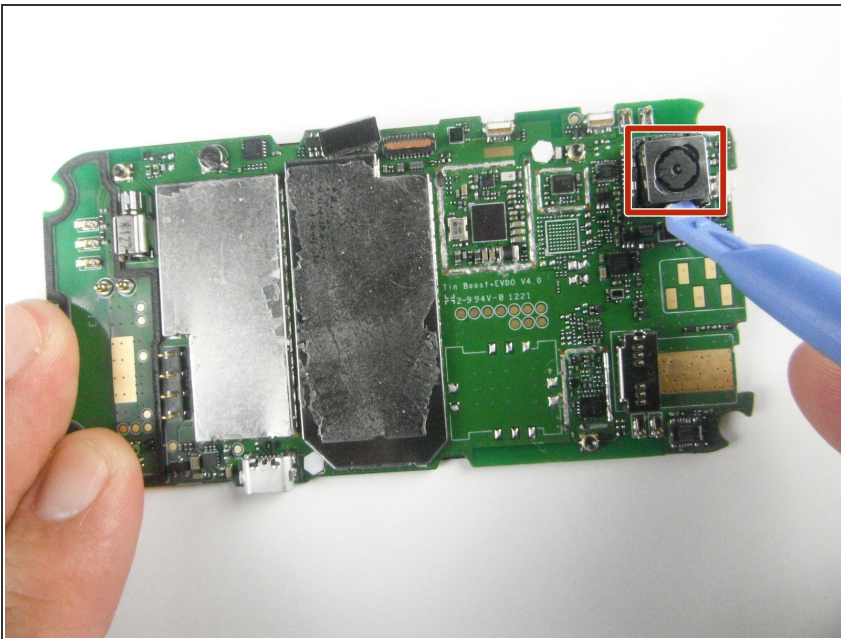
- Flip the mother board over.
- Locate the base of the ribbon cable.
- Pull straight outward using the Plastic Opening Tool.
- Disconnect the ribbon cable connecting the display to the logic board

Step 11



- Pull the two halves of the device apart to disconnect the second (wider) ribbon connector.
- ⓘ Note: The ribbon connector is bonded to the logic board with adhesive, simply pull it to remove it completely.

Step 12



- Flip the mother board over.
- Use the Plastic Opening Tool to disconnect the camera from the logic board.

To reassemble your device, follow these instructions in reverse order.