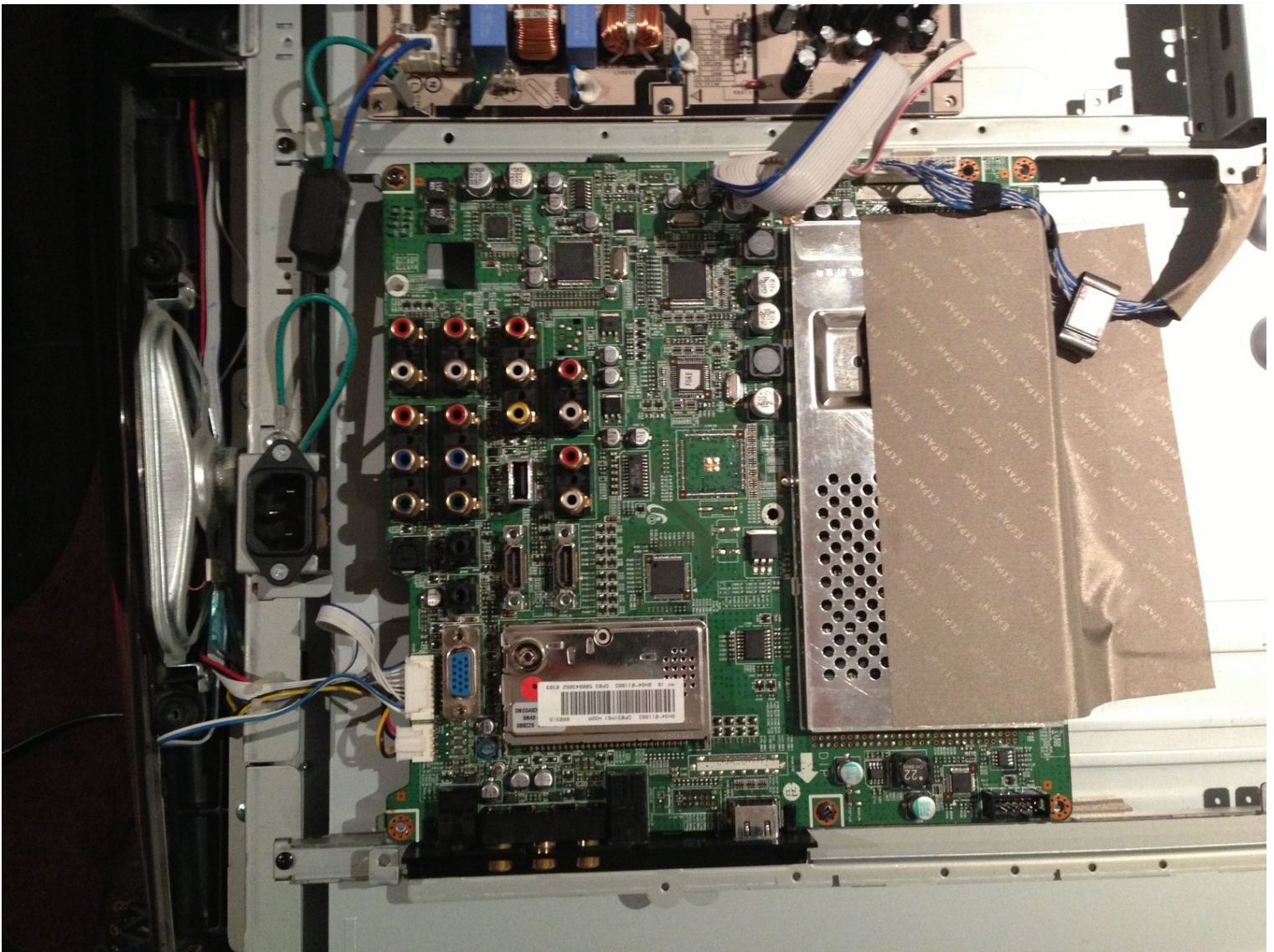




Removing the Samsung LA40R81BD 40in LCD TV Main Board

In this guide, you will be replacing the main...

Written By: Richdave



INTRODUCTION

In this guide, you will be replacing the main board for the Samsung LA40R81BD TV. This moderately difficult task should not be done without following instructions. Please make sure to take photos of your connectors and wiring before removal of the faulty main board.

TOOLS:

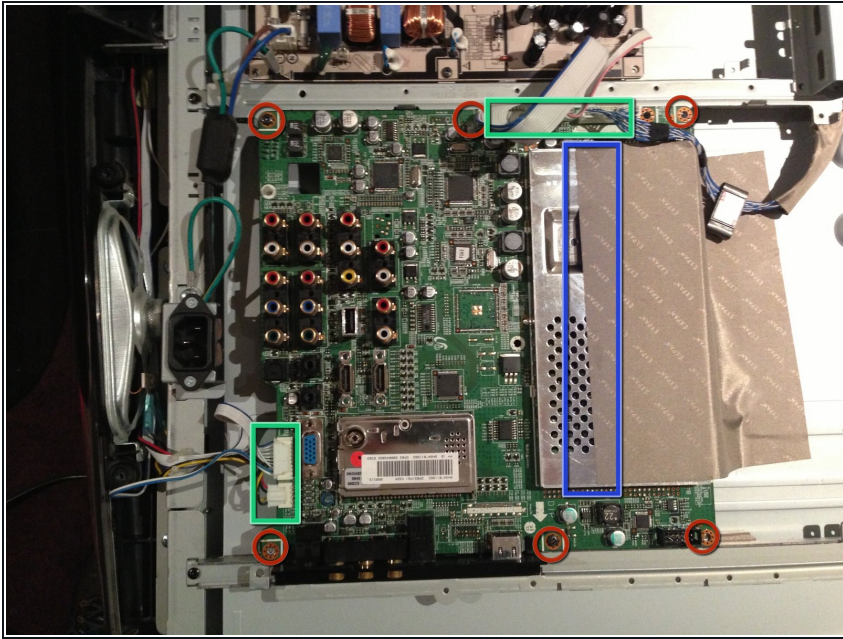
Phillips #2 Screwdriver (1)

Step 1 — Rear Cover



- ⚠ Unplug power cable and all AV cables from rear of TV and carefully lay TV face down on a clean flat working surface ensuring that you don't damage the LCD screen.
- Using a Philips driver remove the 18 screws from the rear panel.
- Gently lift the rear cover off the TV. You may need to wiggle the cover a little however there are no clips holding the cover on so it should come off easily if you have fully unscrewed all 18 screws.

Step 2 — Removing the Samsung LA40R81BD 40in LCD TV Main Board



- Gently peel away the conductive fabric from the metal cover on the board
- Remove 5 connectors from the board
- Remove 6 screws from the perimeter of the board.
- Lift the main board away from the chassis ensuring you don't snag or catch any of the cables.

To reassemble your device, follow these instructions in reverse order.