



Disassembling Motorola Cliq LCD Shield Plate

This is ONLY a prerequisite guide to remove the...

Written By: Tony Tran



INTRODUCTION

This is ONLY a prerequisite guide to remove the LCD shield plate in the Motorola Cliq.

TOOLS:

[iFixit Opening Tool](#) (1)

[Spudger](#) (1)

[T4 Torx Screwdriver](#) (1)

Step 1 — Battery



- Turning over your phone, place two fingers on the back cover and apply pressure away from the camera to slide the back cover off.

Step 2



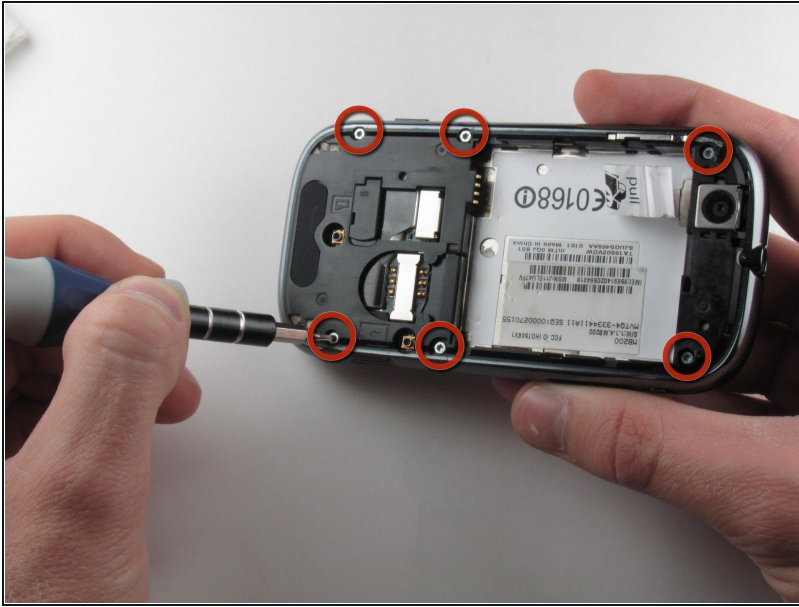
- Pinch the battery pull tab located below the camera, pull it upwards, and remove the battery.
 - ① The pull tab may be tucked under the battery.

Step 3 — Rear Casing



- Wedge a plastic opening tool behind the panel covering the camera, pry it up, and remove it using your fingers.
 - ① The panel is held down by adhesive and may require you to wedge and pry the right side of the panel before it can be easily removed.

Step 4



- Remove the six 4.0 mm T4 Torx screws which line the edge of the back of the phone.

Step 5



- Turn the phone over and slide out the keyboard.
- Wedge a plastic opening tool where the keyboard meets the back casing of the phone next to the headphone jack.
- Carefully pry open the back casing along the keyboard's edge until at least two corners of the back casing are separated from the keyboard.

⚠ Do not fully separate the rear panel from the phone. A cable is connecting the two parts together.

Step 6



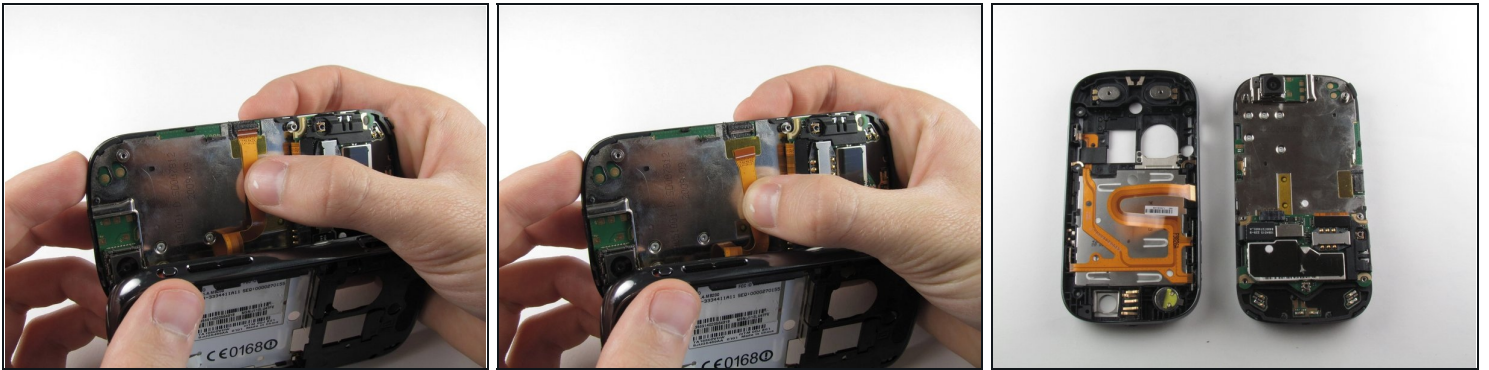
- Carefully separate the back casing from the rest of the phone.

Step 7



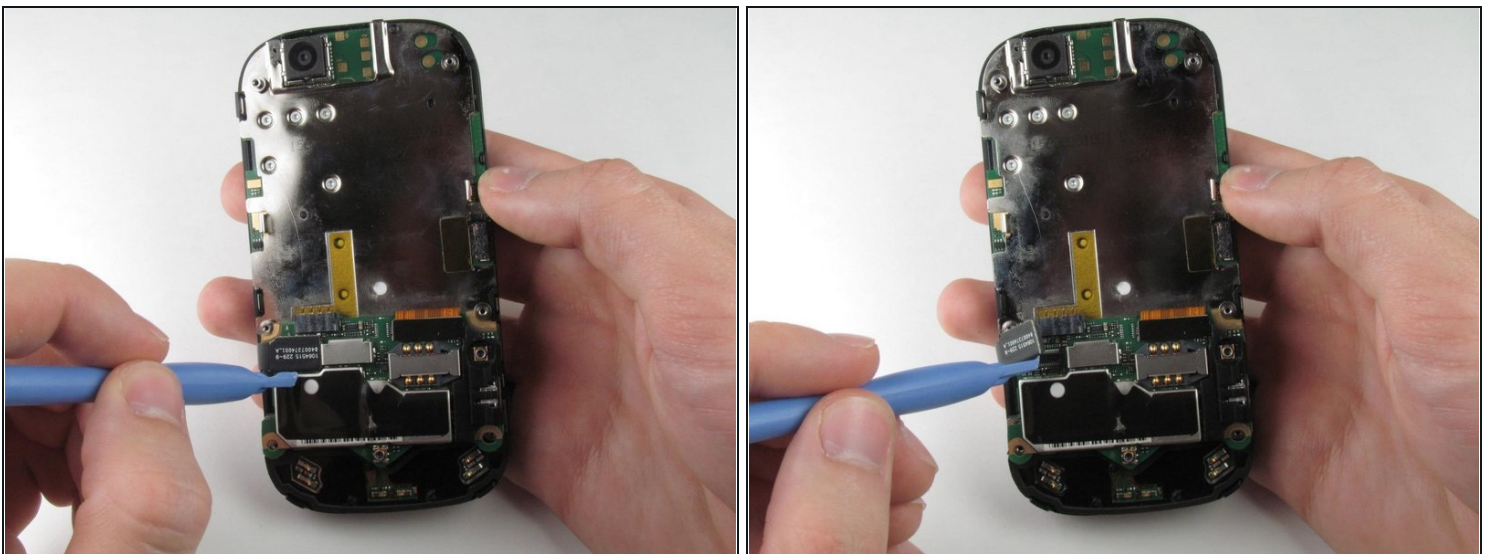
- Gently pry ZIF connector upwards using the flat end of a spudger tool.
 - ⚠ The ZIF connector is glued down. Be gentle! Ripping it off or breaking it will make your phone inoperable.
 - ☑ You may need adhesive to keep your power cable in place when reassembling your phone.

Step 8



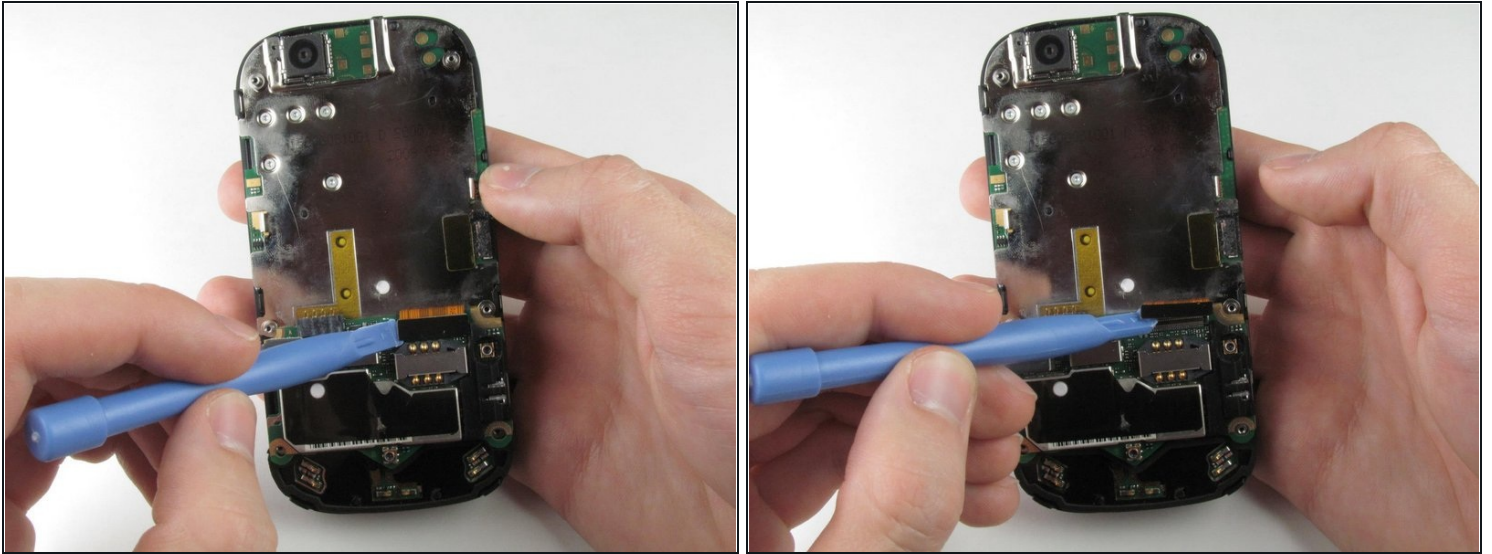
- Press your thumb against the orange power cable and pull it down slowly to disconnect the power cable from the bottom of the keyboard.
- The rear casing and the rest of the phone should now be completely separated.

Step 9 — Motherboard



- Wedge the plastic opening tool underneath the black display connector and pry it off its socket on the motherboard.

Step 10



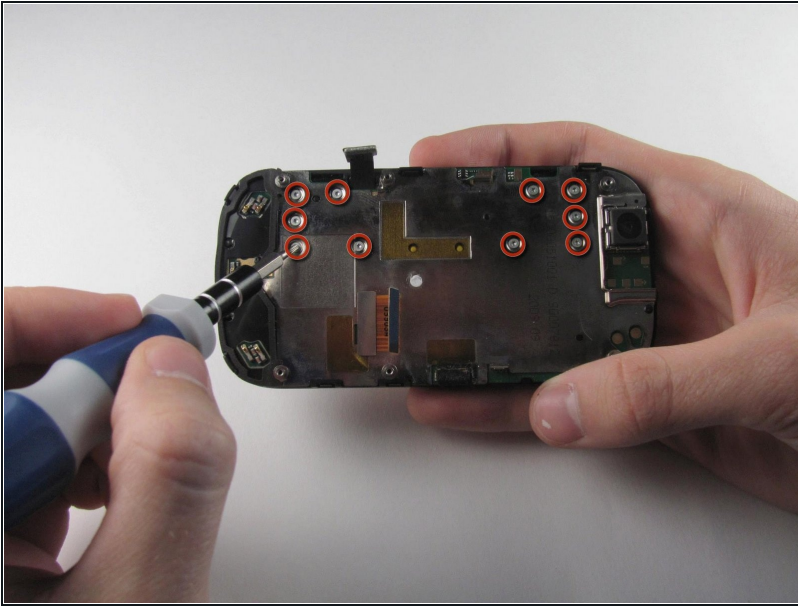
- Pry the orange keyboard connector from its socket on the motherboard using the edge of the plastic opening tool.

Step 11



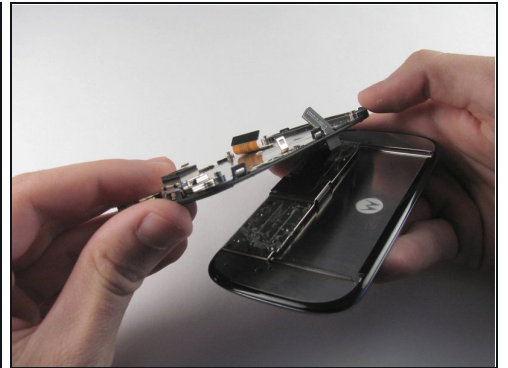
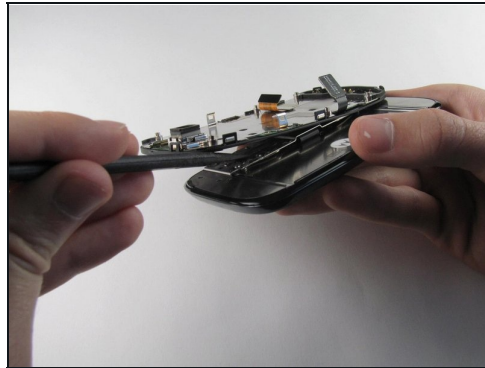
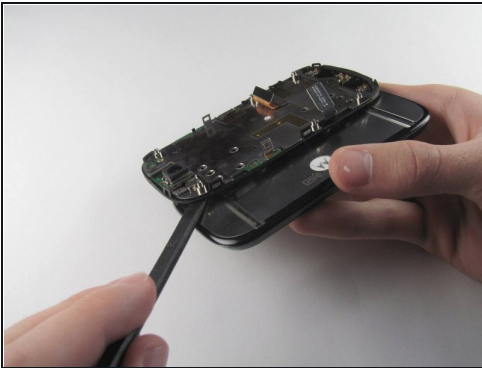
- Carefully grab the sides of the motherboard with your fingers and remove it from the phone.

Step 12 — LCD Shield Plate



- Remove the ten 3.0 mm T4 Torx screws near the black display cable.

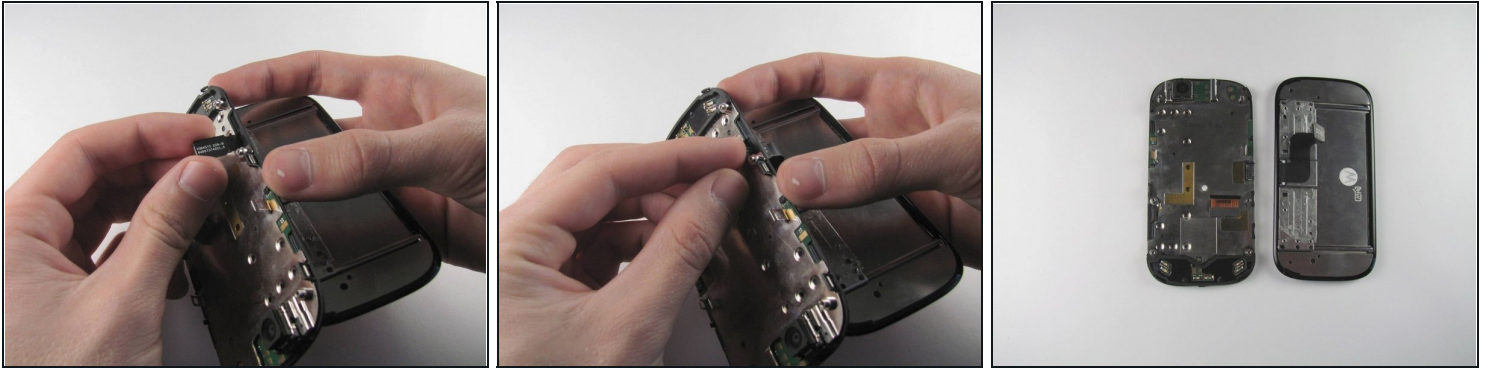
Step 13



- Orient the phone so that the edge closest to the camera points towards you and slide out the keyboard.
- Wedge the tip of a spudger between the keyboard and the display assembly below the camera.
- With steady pressure, pry the keyboard away from the display assembly.
 - ⓘ The keyboard and display assembly are glued together, so expect some resistance.

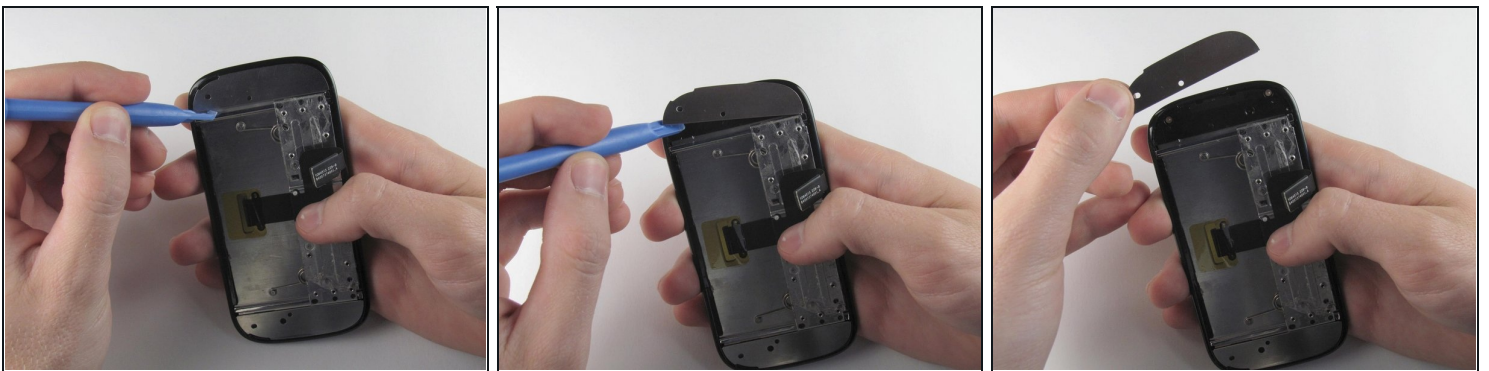
⚠ Do not completely separate the keyboard and display assembly because the display flex cable still connects them.

Step 14



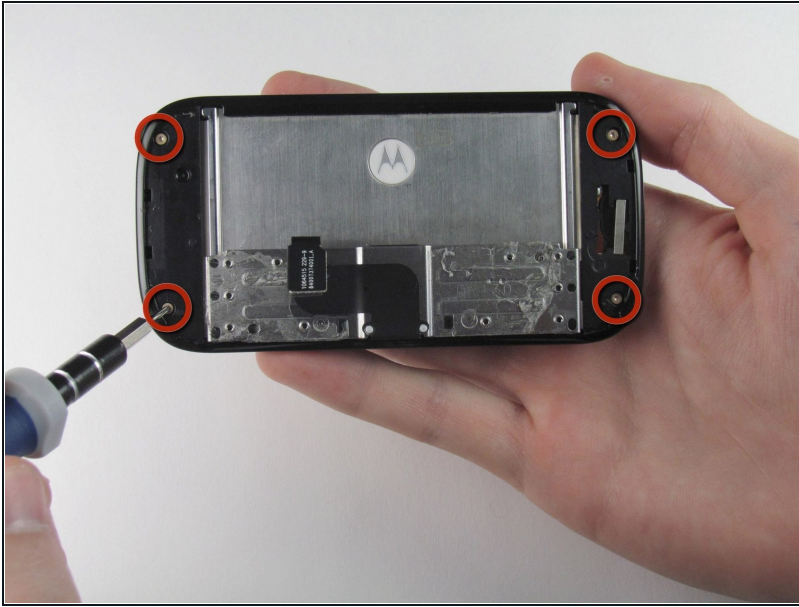
- Grab the display flex cable and gently push it through the notch it is coming out of.

Step 15



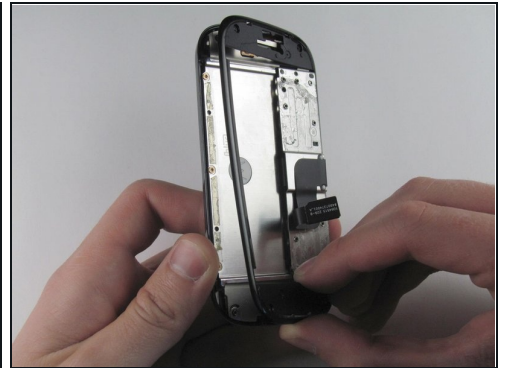
- Wedge a plastic opening tool underneath one of the metal panels on the underside of the display assembly.
- Pry upwards and remove the metal panel.
- Repeat this step for the second metal panel located on the opposite side of the phone.

Step 16



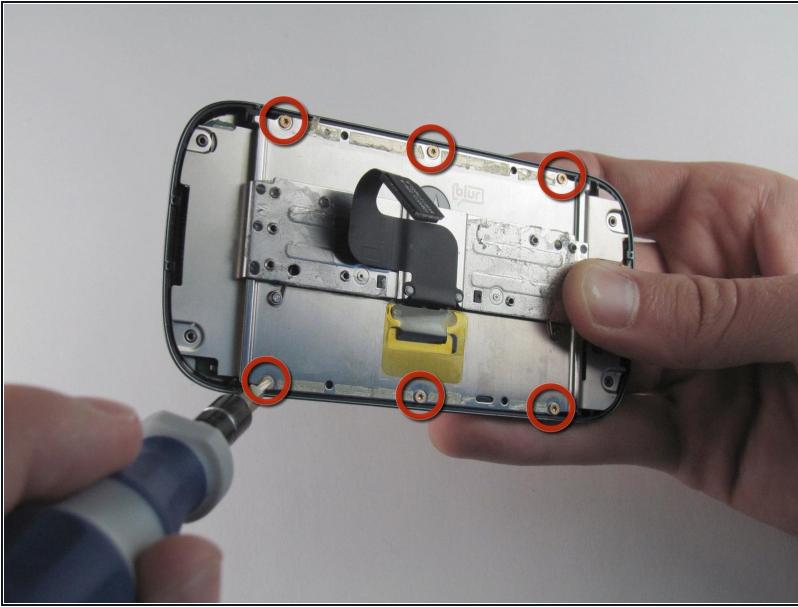
- Remove the four 3.0 mm T4 Torx screws at the corners of the phone.

Step 17



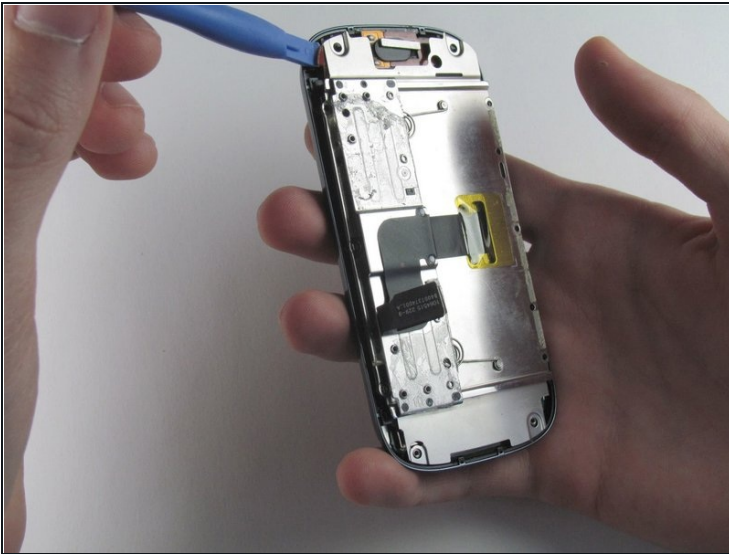
- Wedge a plastic opening tool between the edge and the black plastic cover on the underside of the display assembly.
- Run the plastic opening tool along the edges to separate the black plastic cover from the display assembly.
- Remove the black plastic cover.

Step 18



- Remove the six 3.0 mm T4 Torx screws that align on the phone's sides.

Step 19



- Insert a plastic opening tool between the LCD shield plate and a corner of the keyboard slider plate.
- Pry apart the keyboard slider plate and LCD shield plate.
⚠ Do not completely separate them: the keyboard slider plate is still connected to the LCD shield plate via the display flex cable.

Step 20



- Pry the display flex cable from its connector on the LCD shield plate with a plastic opening tool.
- Separate the display flex cable from the LCD cover plate.

To reassemble your device, follow these instructions in reverse order.