



# XtremeMac Luna Button Circuit Boards Replacement

This guide explains how to install the circuit boards connected to the top buttons.

Written By: Andre Rivera



---

## INTRODUCTION

If your Luna's Buttons or alarm are not working you may need to reinstall its buttons or circuit boards.

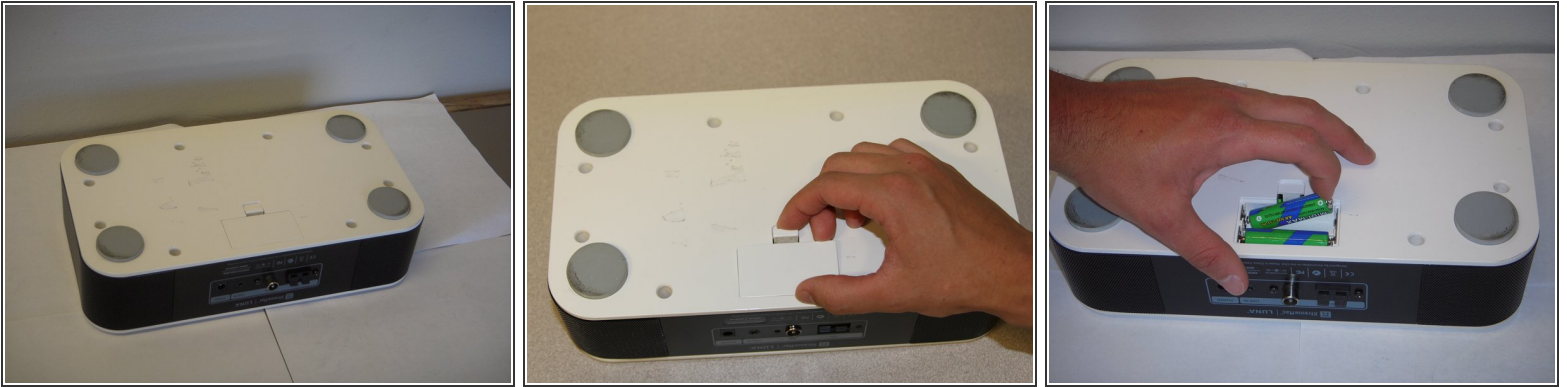
---



### TOOLS:

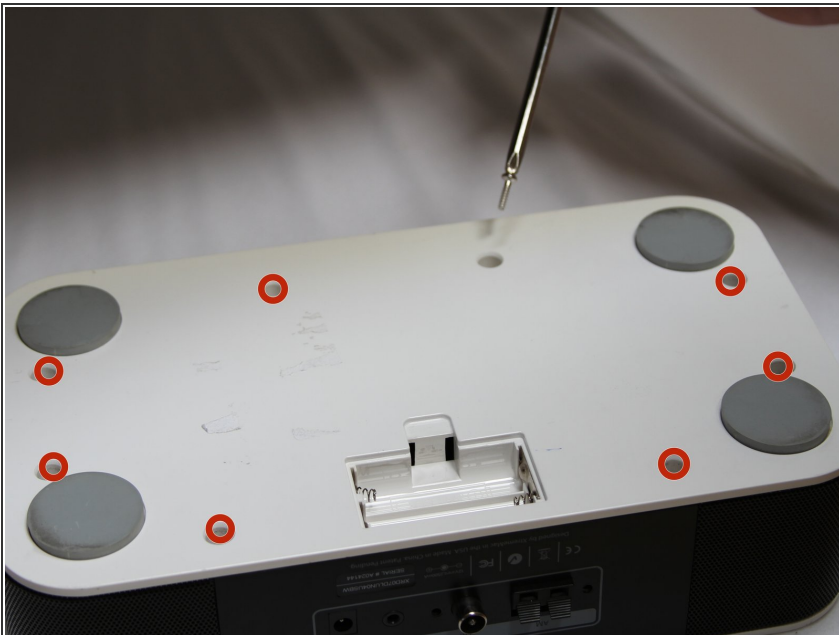
- [Phillips #1 Screwdriver](#) (1)
  - [iFixit Opening Tools](#) (1)
-

## Step 1 — Bottom Panel



- Flip the device over so that the batteries are closest to you.
- Remove the battery lid by pressing the battery cover's tab and pulling it away from the device.
- Push the battery against the spring and lift it out of the casing.
- Repeat with the other battery.

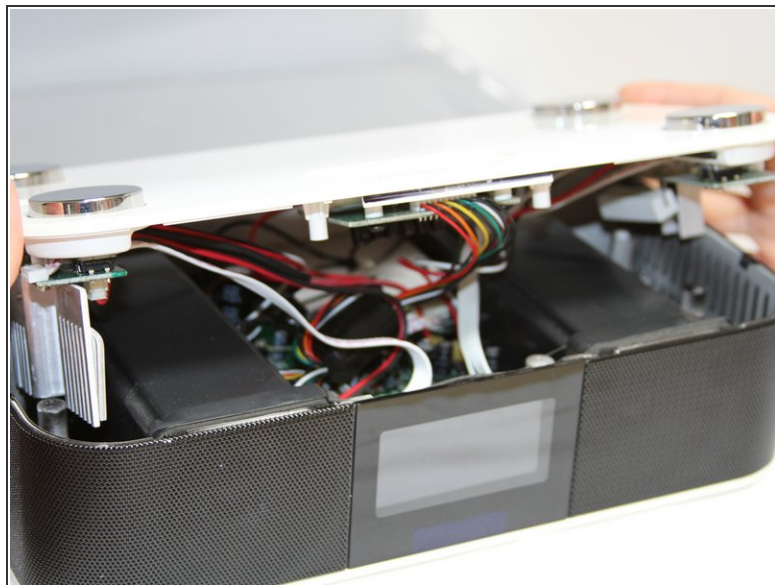
## Step 2



- Unscrew all eight 12mm Phillips head screws with a Philips #1 screwdriver.
- ⓘ The iFixit 26 bit screwdriver kit will not reach the screws. Make sure to use a screwdriver that is thin enough to not get stuck in the screw holes.

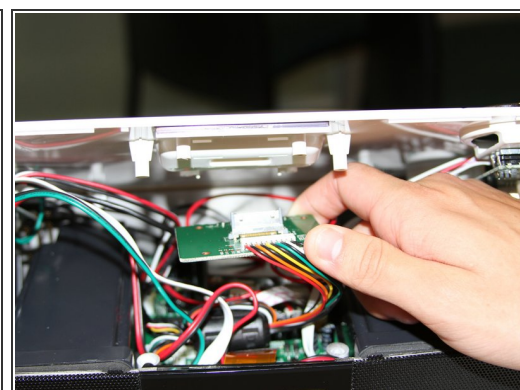
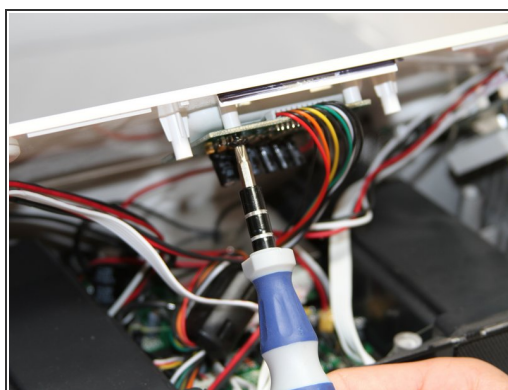
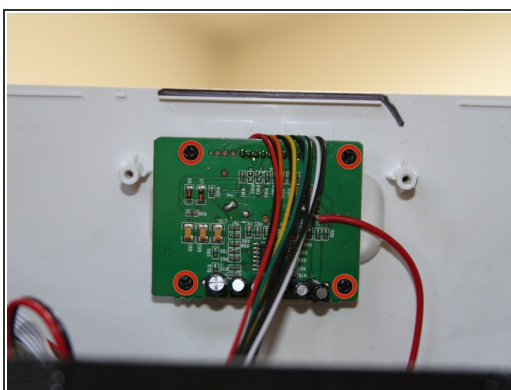


## Step 3



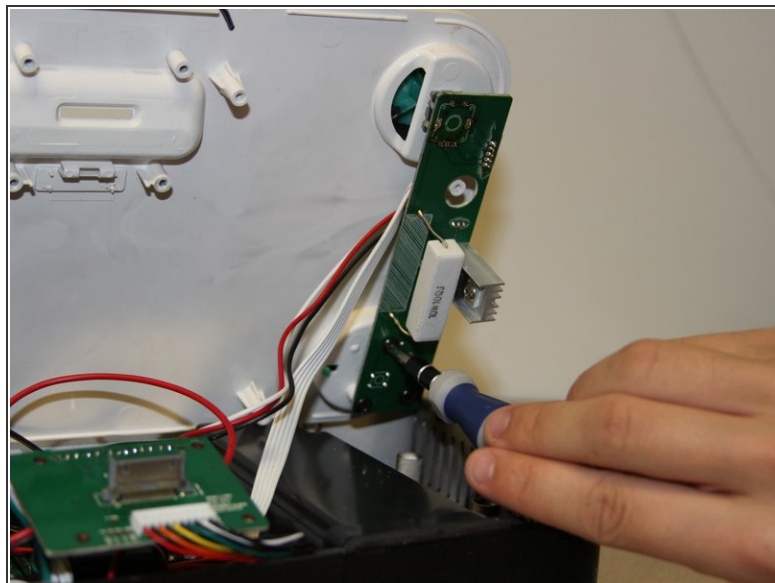
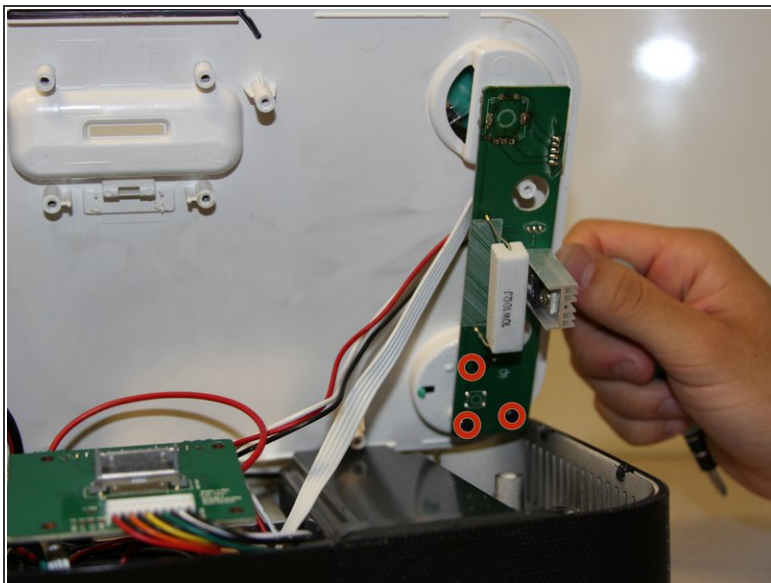
- Flip the Luna back over so that the buttons are facing upward and the LCD screen is facing you.
- Gently tilt the lid back 45 degrees so that the inside is exposed.
- ⓘ Be mindful of the wires inside of the Luna. It is easy to break a connection if a wire gets caught.

## Step 4 — Dock Circuit Board



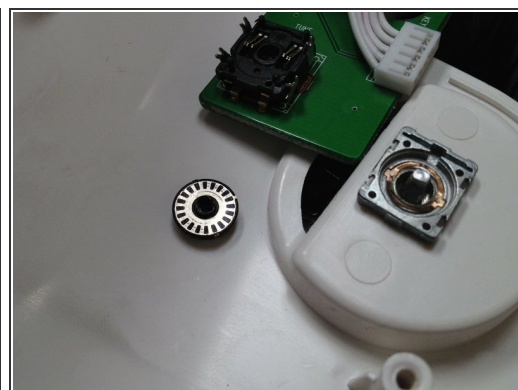
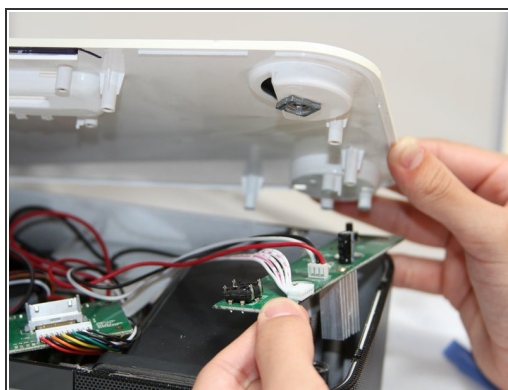
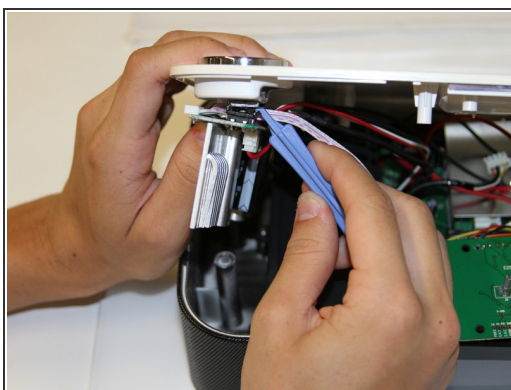
- Unscrew the four black 7mm screws with the Phillips #1 screw driver that hold the middle circuit board to the top case.

## Step 5 — Button Circuit Boards



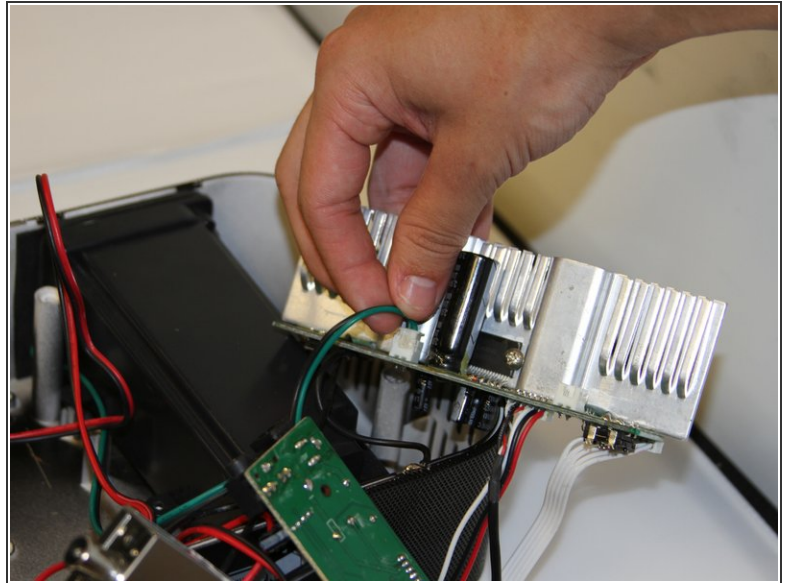
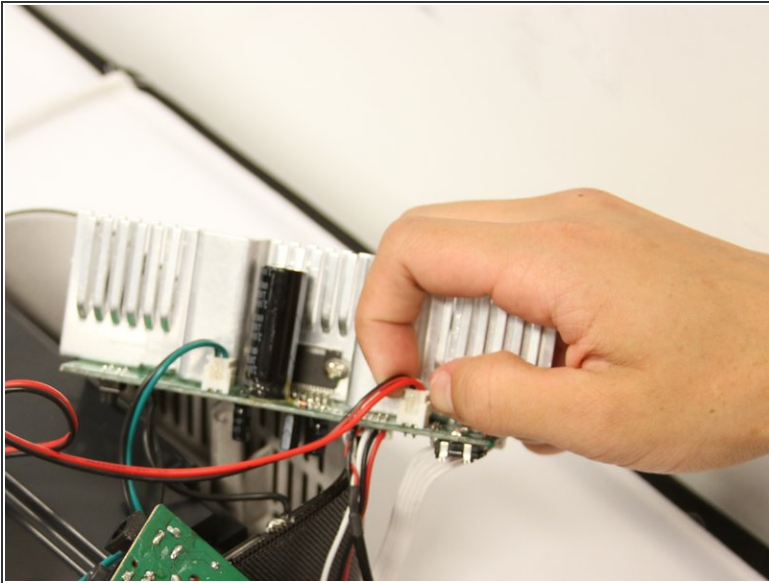
- Unscrew the three 7 mm black screws using the Philips #1 screwdriver on the back end of the left and right circuit board.
- ⓘ Removing the right circuit board first will make it easier to unscrew the left because the heat-sinks on the left circuit board can get in the way of the screwdriver.

## Step 6



- Use a plastic opening tool to pry the black connections away from the top casing.
- ⓘ Be attentive when you separate the circuit boards from the top, as there is a loose wheel inside.

## Step 7



- Turn the circuit boards over. Remove the two connections on the left side by pulling on the tabs.
- ⓘ The glue that holds the connection together will come off when you pull. Pull on the tab with enough force to break the glue without damaging the wires.

To reassemble your device, follow these instructions in reverse order.