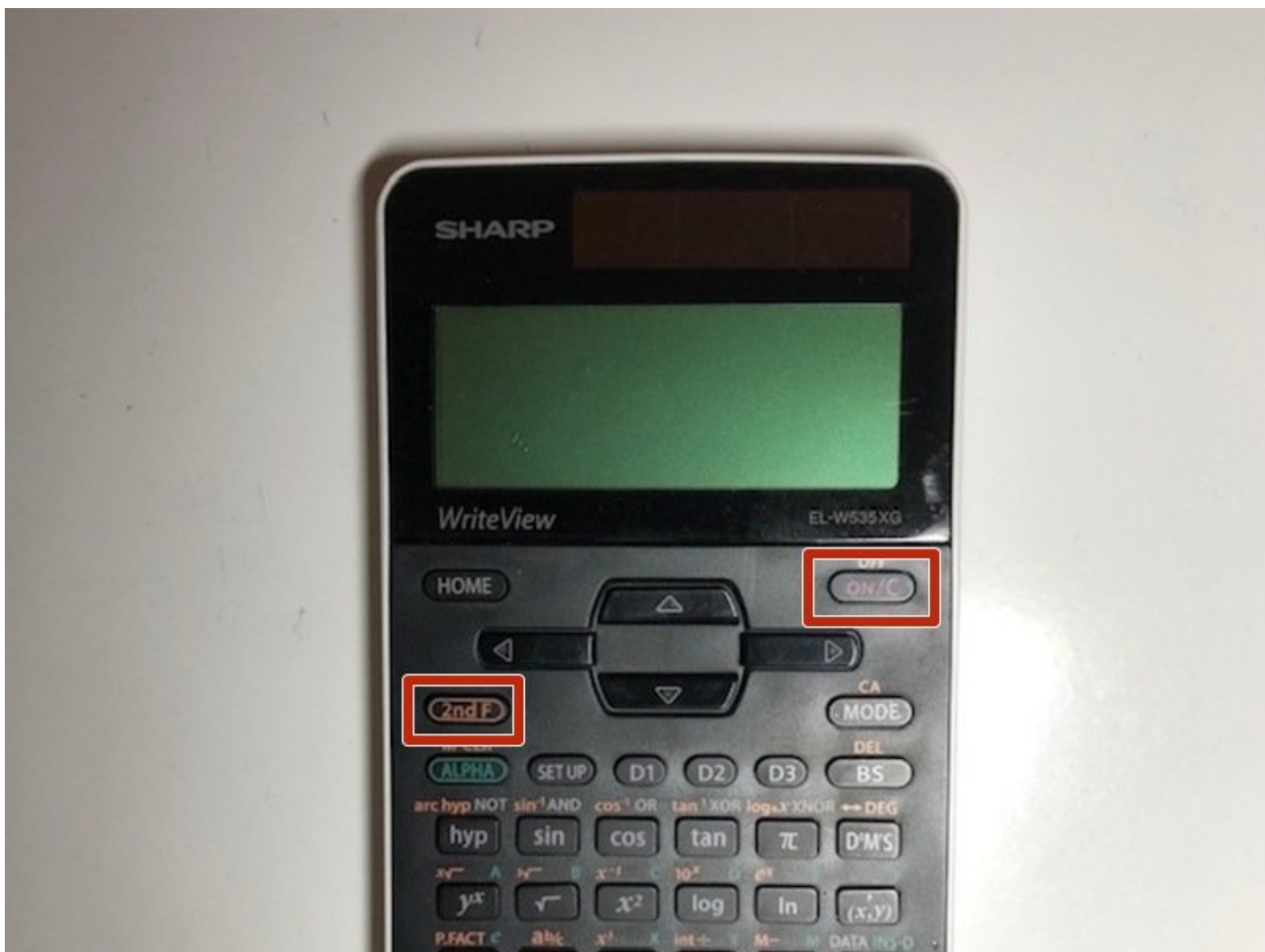




# SHARP EL-W53XG WriteView Battery Replacement

This is a guide on how to replace the LR44 Battery in a SHARP EL-W53XG WriteView calculator.

Written By: Faduma Hagi



## INTRODUCTION

This guide is on how to replace the battery in a SHARP EL-W53XG WriteView calculator. Although this calculator is solar-powered, the battery in a SHARP EL-W53XG WriteView calculator operates the total functionality of the calculator. Therefore, when the LR44 battery dies, the whole calculator will stop working. This can become troublesome for users. Following the steps of this guide thoroughly, users with this problem can effectively replace their battery in this calculator.



### TOOLS:

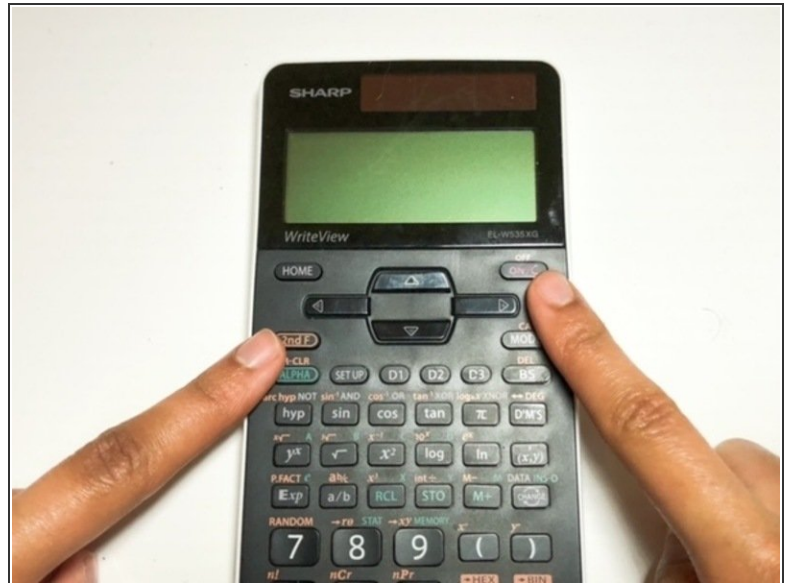
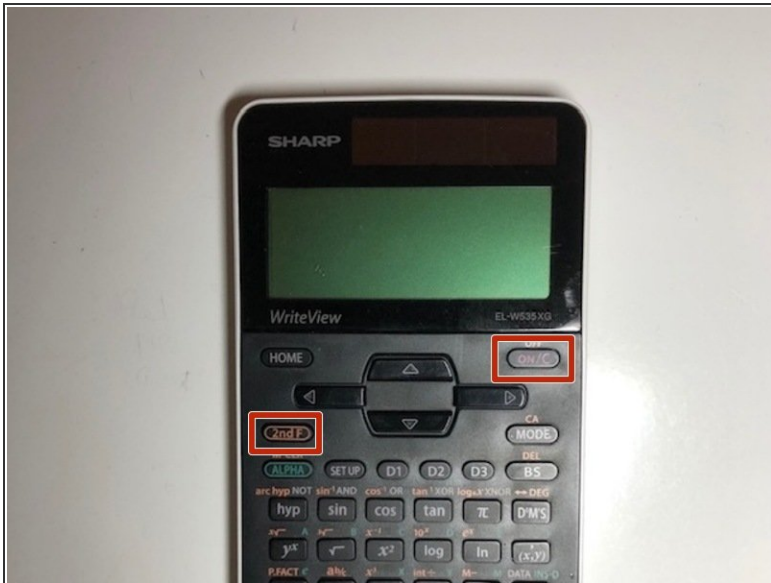
- [Spudger](#) (1)
- [Tri-point Y000 Screwdriver](#) (1)



### PARTS:

- [LR44 \(A-76\) Batteries](#) (1)

## Step 1 — Battery



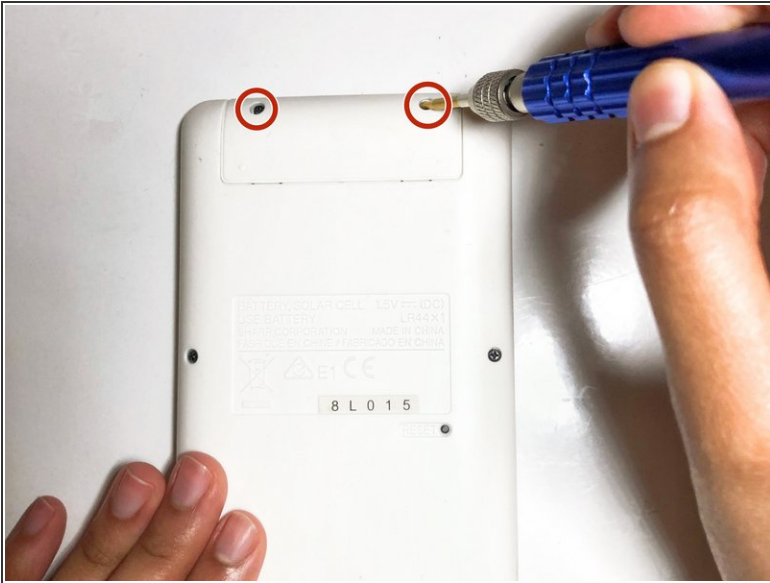
- Turn off the calculator by pressing both the [2NDF] and [ON] buttons at the same time.

## Step 2



- Flip the calculator so that the battery cover is facing you, and it will be easy to remove.

## Step 3



- Remove the two screws securing the battery cover with the Tri-point #000 screwdriver.
- Remove the battery cover.
- ⓘ Make sure not to remove the other screws on the calculator, just the two screws on the battery cover.

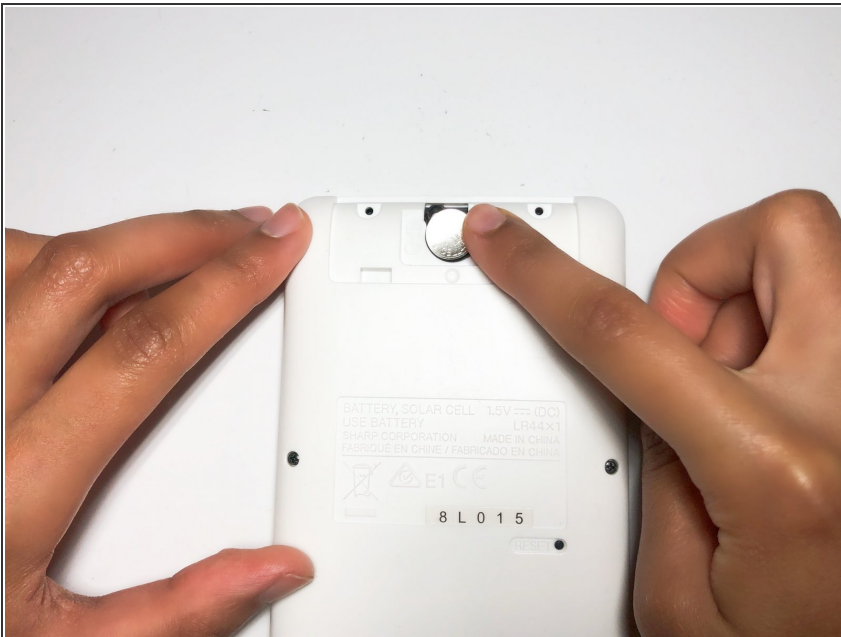


## Step 4



- Remove the worn-out LR44 battery inside using a spudger.

## Step 5



- Gently insert the new LR44 battery in the empty battery slot.

## Step 6



★ Place and screw the battery cover on using the Tri-point #000 screwdriver.

⚠ Tightly screw the battery cover to prevent losing screws.

To reassemble your device, follow these instructions in reverse order.