



Toshiba Satellite A85-S107 15" Fan Replacement

This guide will demonstrate how to replace the fan.

Written By: Alana



INTRODUCTION

Use this guide to replace or install the fan in your Toshiba laptop.



TOOLS:

- [Spudger](#) (1)
 - [iFixit Opening Tools](#) (1)
 - [Phillips #0 Screwdriver](#) (1)
-

Step 1 — Battery



- Power off the laptop.

⚠ Disconnect the power cable from the laptop. If you do not, electric shock may result.

Step 2



- Flip the laptop over and orient it such that the battery faces towards you and the front faces away from you as shown in the diagram.
- Unlock the battery by sliding the tab shown to the right
- ⓘ This tab will latch into place.

Step 3



- Slide the tab shown to the left and remain holding it.
 - ⓘ This tab does not lock into place like in the first step.
- Place your thumb on the grips of the battery as shown.
 - While holding onto the grips, pull the battery towards you and away from the laptop.

Step 4 — Keyboard



- Flip the laptop over so that the front tab of the laptop faces you.

Step 5



- Unlock the laptop by sliding the front tab to the right.
- Open the laptop by lifting the screen up while holding the tab in place.

Step 6



- Place the laptop on its left side with the disk drive facing up and the screen open completely.
- Locate the rectangular slot on the side of the laptop just above the disk drive.
- Insert the flat end of the spudger into the rectangular slot.

Step 7



- Insert the opening tool into the rectangular slot with the spudger.
- Pry off the top part of the laptop's case (above the keyboard) containing the speakers by using both the spudger and opening tool to push the case away from the computer.
- Once the top part of the laptop's case has been popped off, use your hands to remove it.

Step 8



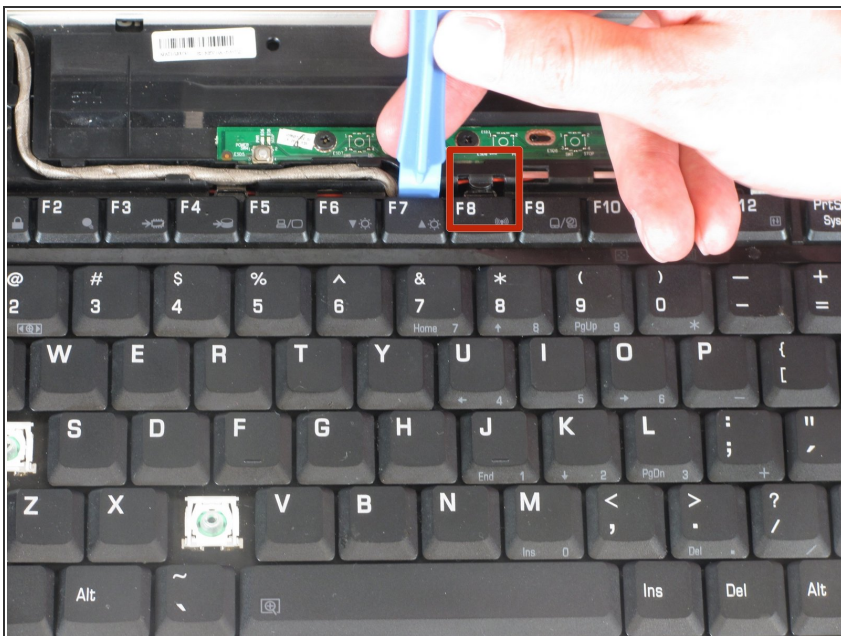
- Place the laptop on a level surface with the keyboard facing you.

Step 9



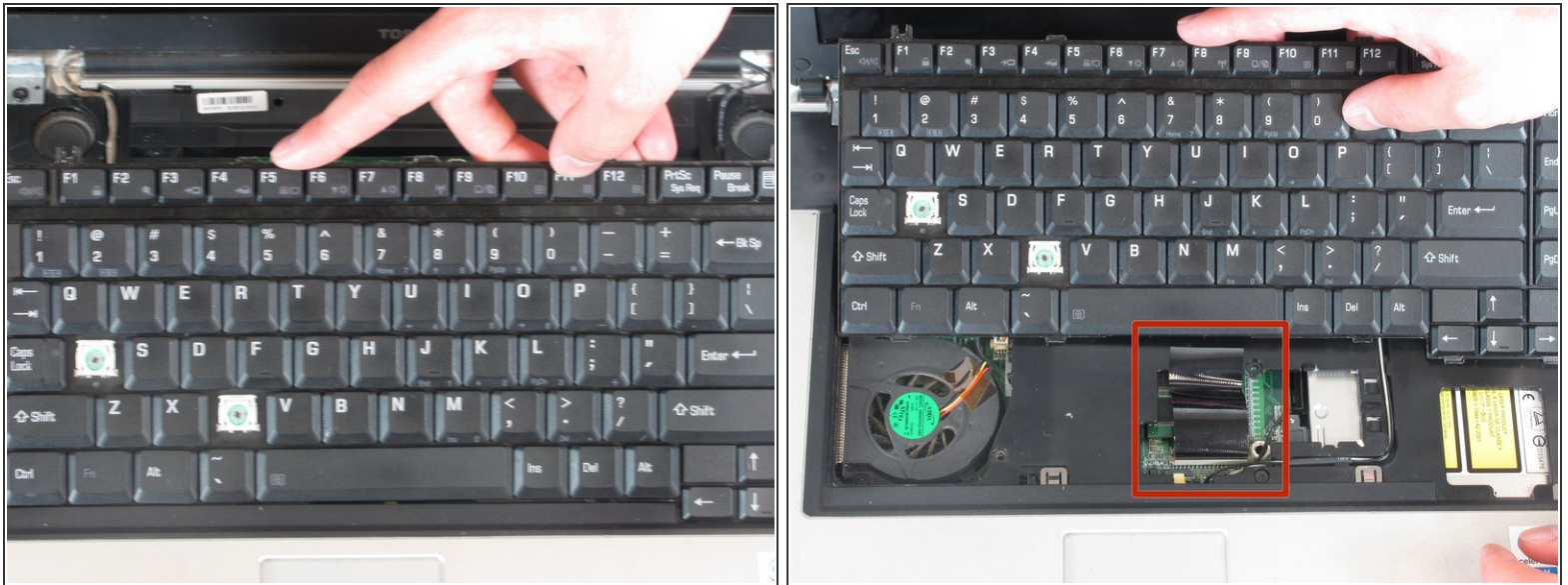
- Remove the two 5mm Phillips #1 screws which hold the keyboard in place.

Step 10



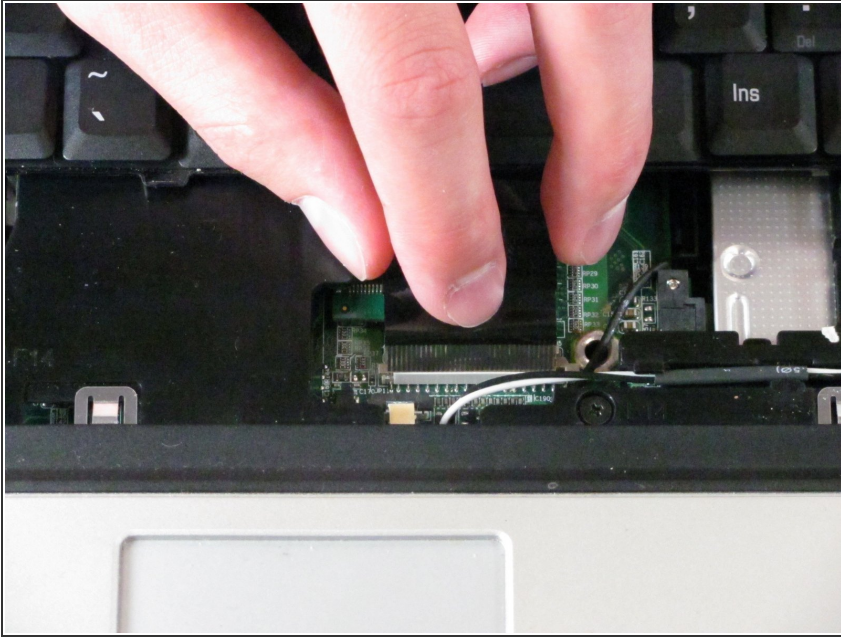
- Unhook the plastic tab at the top of the keyboard using the plastic opening tool to pry the top of the keyboard up.

Step 11



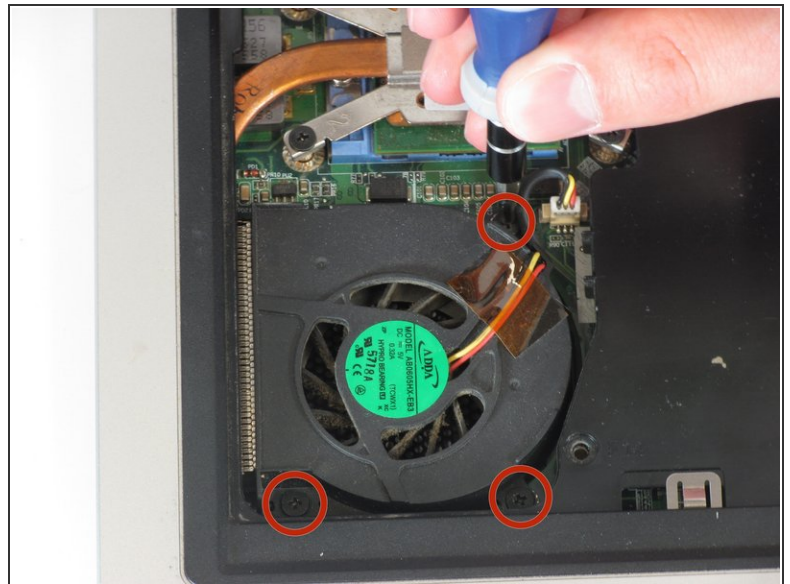
- Lift up the keyboard from the back end where the function keys are located.
- Slide the keyboard out towards the screen.
- Be careful not to rip the ribbon out of its port.
⚠ This may damage your laptop.

Step 12



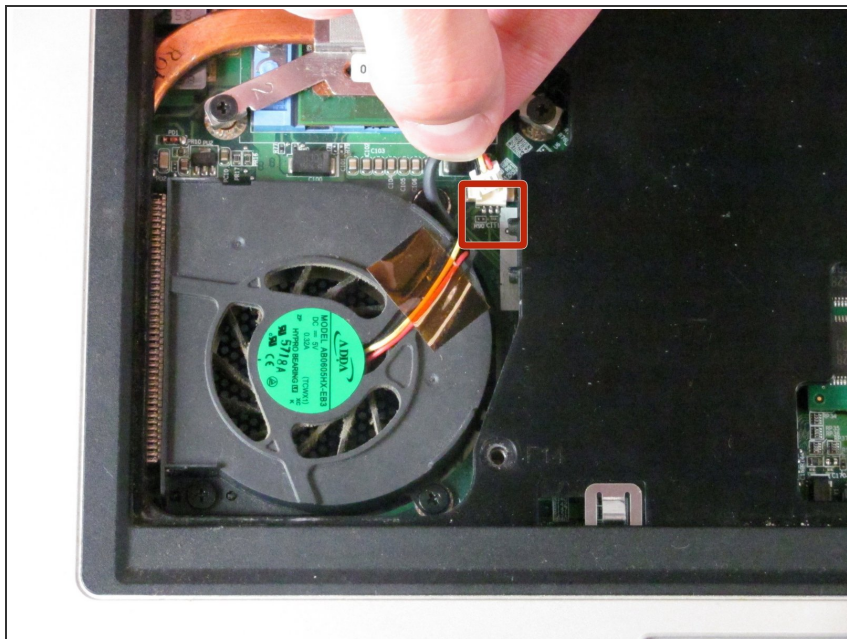
- Pull the ribbon wire attaching the keyboard to the computer out of its port.
- ⚠ Before you pull try to hold the ribbon wire as close to the port as possible to prevent it from breaking.

Step 13 — Fan



- Locate and Remove the three 5mm Phillips #0 screws.

Step 14



- Pull the end of the white wire clip out of its port.

Step 15



- Take out the fan by lifting it out of its dock.

To reassemble your device, follow these instructions in reverse order.