



Toshiba Satellite A215 S4697 RAM Replacement

A quick guide on installing extra RAM on to your Toshiba Satellite A215 S4697

Written By: Nikhitha Byragani



INTRODUCTION

Installing the RAM is a quick and easy process, just make sure you have the appropriate RAM for your laptop. The Toshiba Satellite A215 S4697 has a max of 4GB of RAM. This means two 2GB of RAM cards.



TOOLS:

- [Phillips #1 Screwdriver](#) (1)



PARTS:

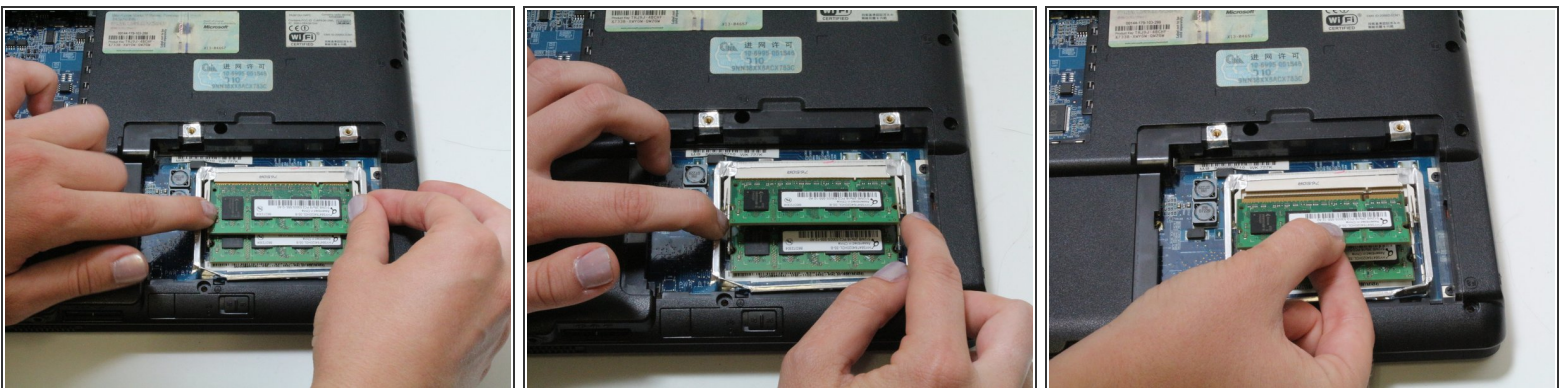
- [PC2-5300 1 GB RAM Chip](#) (1)
- [PC2-5300 2 GB RAM Chip](#) (1)

Step 1 — RAM



- Close the laptop and turn it over so that the base is facing upwards and the spine is away from you.
- Unscrew the two captive screws with the Phillips #1 and open the compartment.
- ⓘ The captive screws cannot be removed from the lid.

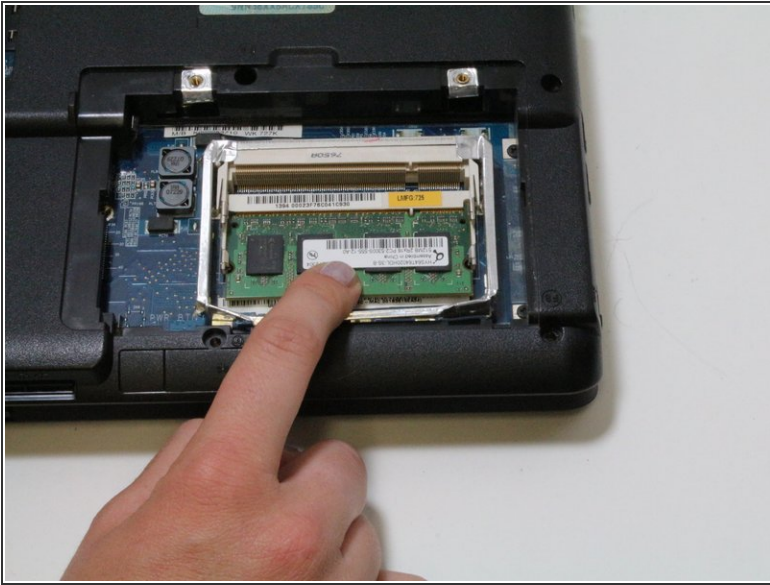
Step 2



- Pull the two tabs away from the RAM so that the RAM will be removable.

⚠ Make sure to gently pull the RAM away from the base connections in the device. Do not use excessive force or other tools to remove it.

Step 3



- After the old RAM has been removed, insert the new RAM stick and ensure that they are oriented in the correct direction before installation. This can be done by lining up the gold connections to each other.

To reassemble your device, follow these instructions in reverse order.