



Microsoft Surface Pro 7 Screen Adhesive Replacement

Follow this guide to replace the screen...

Written By: Sam Omiotek



INTRODUCTION

Follow this guide to replace the screen adhesive on a Microsoft Surface Pro 7 before reassembly. This guide is meant to be used with our [Surface Pro 7 repair guides](#), most of which require removal of the display.

Some photos in this guide are from a different model and may contain slight visual discrepancies, but they won't affect the guide procedure.

TOOLS:


[Spudger](#) (1)
[iFixit Adhesive Remover](#) (1)
[Microfiber Cleaning Cloths](#) (1)

PARTS:

[Surface Pro 7 Adhesive Strips](#) (1)

Step 1 — Remove the old adhesive



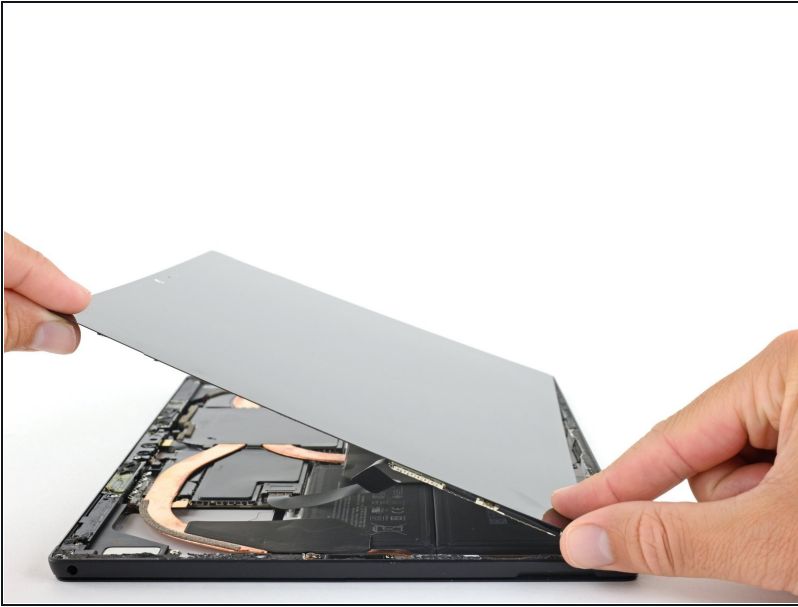
- Scrape away all traces of adhesive and debris from the Surface's case and screen.
- Use high concentration isopropyl alcohol (over 90%) or iFixit adhesive remover and a lint-free cloth to clean the adhesion surfaces on both the case and the screen.
 **If glue or glass remnants are left behind, the new screen will not mount correctly and may be damaged.**
- Lay the adhesive strips out to get an idea of where they go.

Step 2 — Apply the new adhesive



- Peel the white backing off of one adhesive strip, and carefully align it with the edge that matches the cutouts in the strip.
- Lay the strip down lightly on its matching edge and make sure all the cutouts and edges of the strip line up with the Surface case.
- Once aligned, use your fingers to press the adhesive strip down against the case.
- Repeat this procedure for the remaining three adhesive strips.

Step 3 — Install the display



- Continue reassembly until the cables are reconnected and you're ready to install the screen.
- ⓘ If possible, test your screen's functionality before sticking it in place.
- Remove the clear backing from the adhesive strips.
- Align the screen with the case and set it on top of the adhesive. Once it's aligned, press down on the edges of the screen to set the adhesive.
- Apply a few books worth of weight on top of the screen for an hour to help the adhesive bond.

To reassemble your device, follow the above steps in reverse order.

Take your e-waste to an [R2 or e-Stewards certified recycler](#).

Repair didn't go as planned? Try some [basic troubleshooting](#), or ask our [Answers community](#) for help.