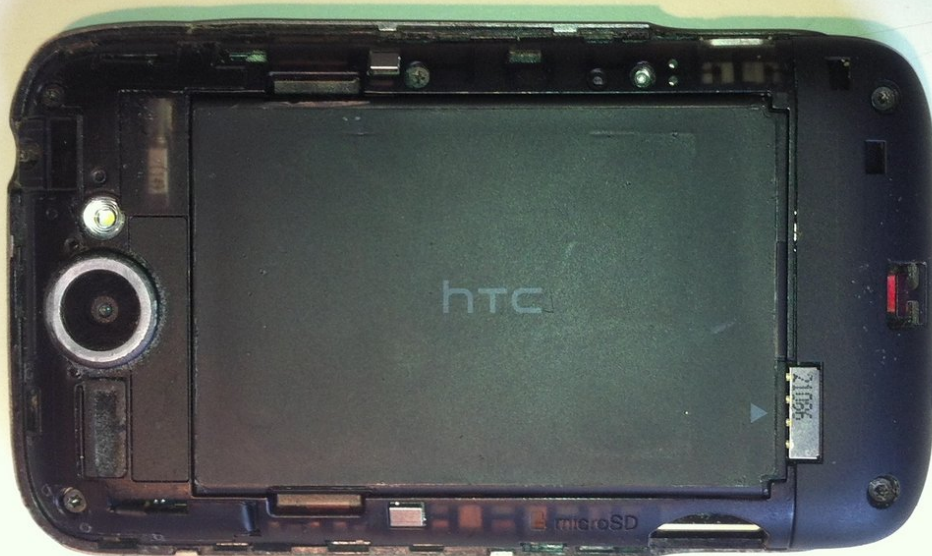




Repairing HTC Wildfire S broken screen

Shows how to replace the glass on the HTC Wildfire S

Written By: Mikey Willbiscuit





TOOLS:

- [T5 Torx Screwdriver](#) (1)
- [Phillips #00 Screwdriver](#) (1)
- [iFixit Opening Tools](#) (1)

Step 1 — broken screen



- First remove the rear case/battery cover

Step 2



- Remove the battery.
- Remove the two T5 Torx screws.
- Prise off the lower casing towards the right in the picture, taking care not to break the two tabs

Step 3



- Remove the two further T5 torx screws
- Remove the three Phillips #00 screws.

Step 4



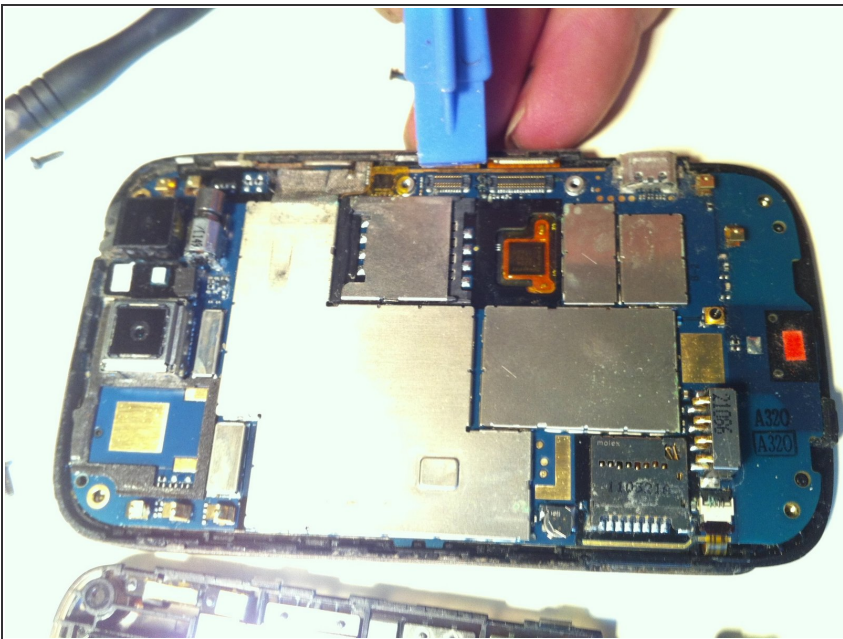
- Now carefully prise off the case all round and it will detach completely

Step 5



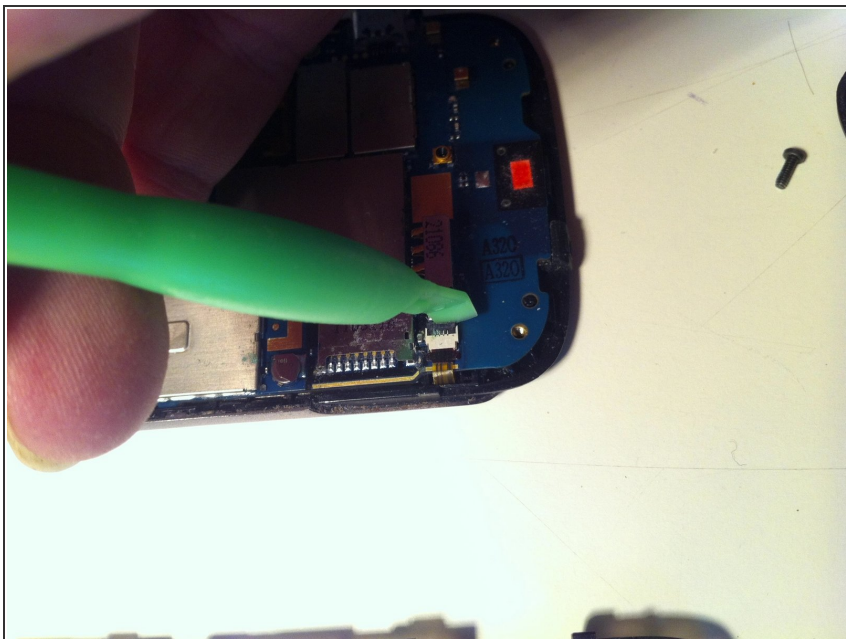
- Prise up this connector

Step 6



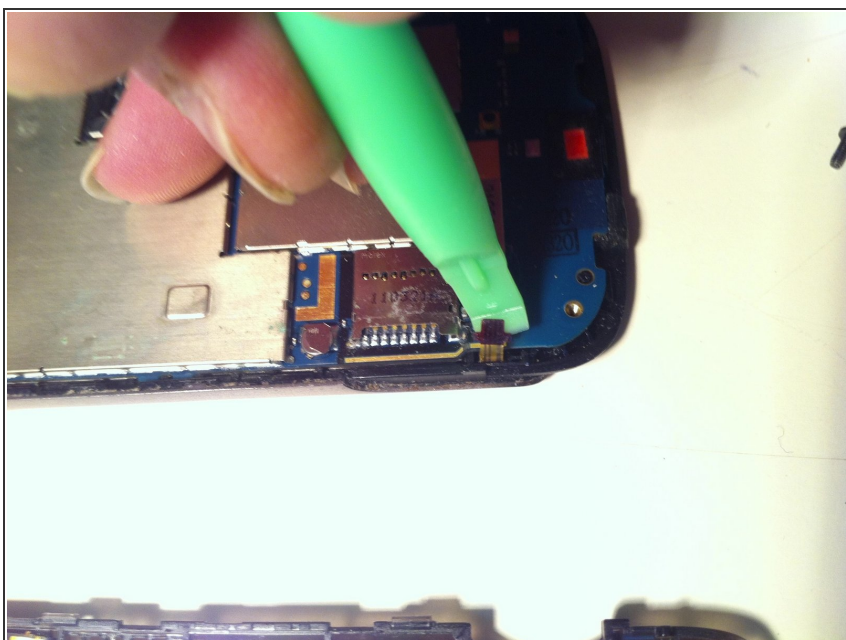
- And this one

Step 7



- Lift up the retainer using a plastic opening tool.

Step 8



- And carefully pull out the tab connector.
- NOW PAUSE WITHOUT MOVING ANYTHING!

Step 9



- NOTE THIS FLEXIBLE RIBBON

Step 10



- Carefully lift up the board from the left-hand side allowing it to 'hinge' on the metallic ribbon connector you have just noted and allow it to lay flat

Step 11



- The freed connector for the screen should have unfolded
- Now the screen can be pried from the outer case, but take care as you do so not to tear the metallic ribbon between the two casings

Step 12



- To detach the screen it can help to use a pry tool to push the screen from behind through the slot

Step 13



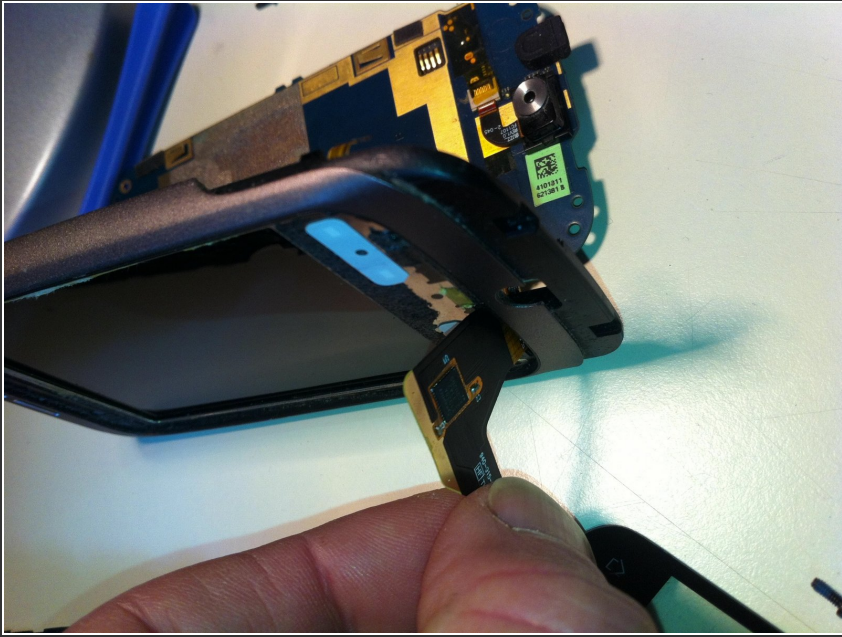
- The screen is detached and the connector can be wiggled out through the slot

Step 14



- Remove the old screen and connector altogether

Step 15



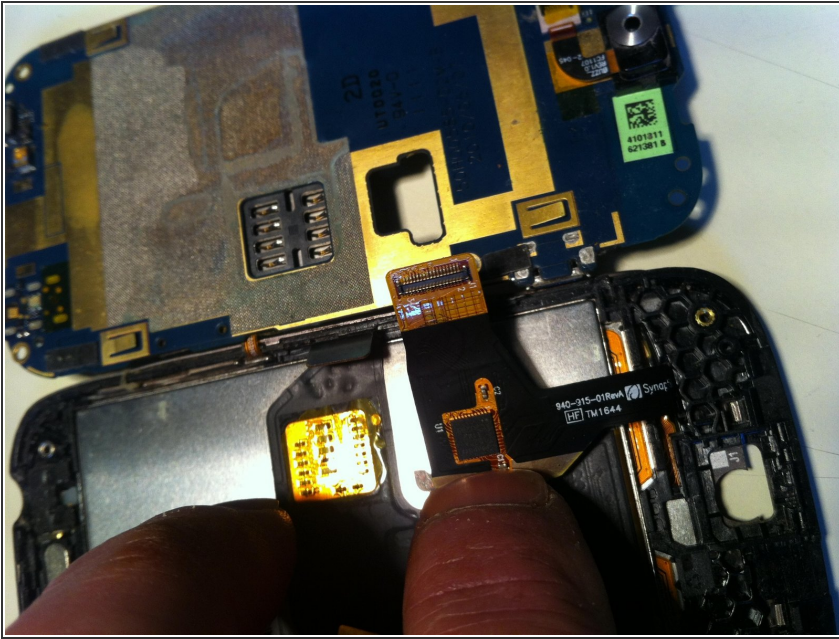
- The connector for the new screen now has to be wiggled back through the slot

Step 16



- Once the connector is pushed through the slot, you should now stick the new screen into place using suitable adhesive strip

Step 17



- Fold down the ribbon connector from the screen and carefully fold the two casing halves together again, making sure that the two connectors are sticking out of the side

Step 18



- Reconnect the two connectors on the right hand side by pressing down

Step 19



- Reinsert the ribbon connector on the left hand side and push down the retaining catch

Step 20



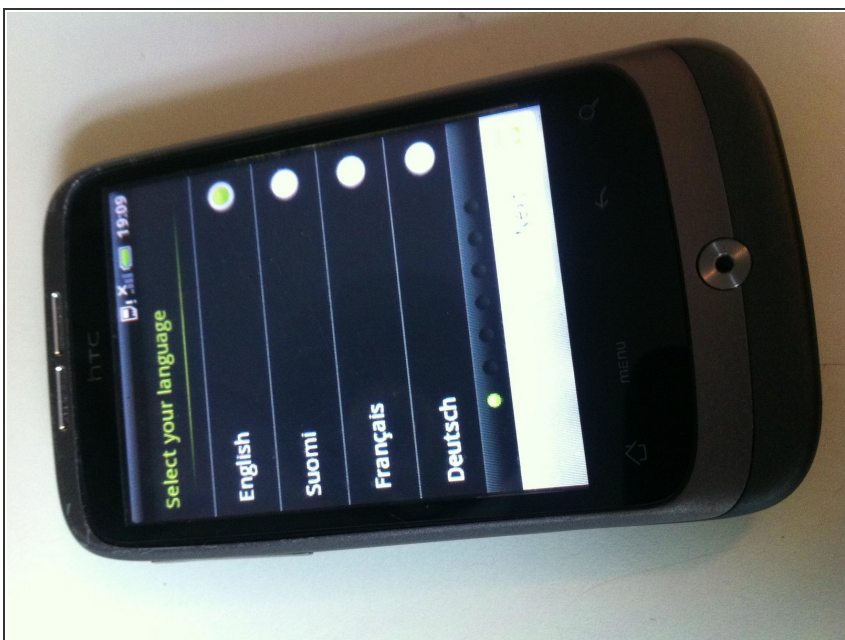
- Clip the rear casing back on to the body

Step 21



- Put the bottom cover back in place and then replace all the screws

Step 22



- Replace battery and battery cover and all should now be well!

To reassemble your device, follow these instructions in reverse order.