



How to Detach the Keyboard on a Surface Book

Follow this guide to safely disconnect the...

Written By: Carsten Frauenheim



INTRODUCTION

Follow this guide to safely disconnect the keyboard base from the display on a Microsoft Surface Book.

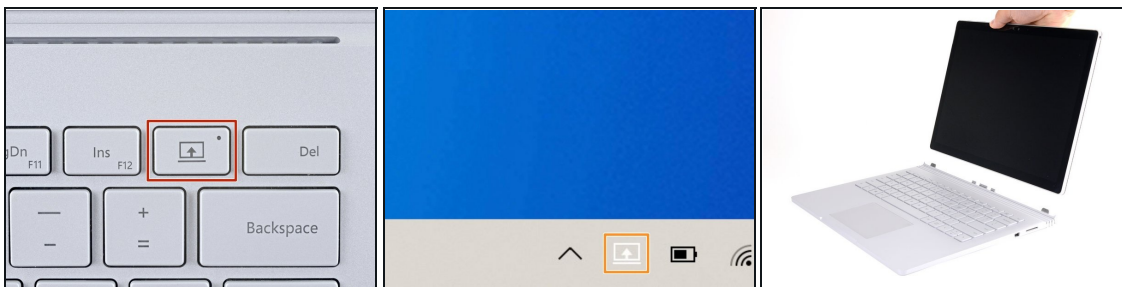
The Surface Book's keyboard base is magnetically attached to the screen and needs to be manually detached if the device can't power on. Detaching the display from the keyboard base is a helpful prerequisite, making repairs significantly easier.



TOOLS:

Paper Clip (1)

Spudger (1)


Step 1 — Remove the display with the Detach button



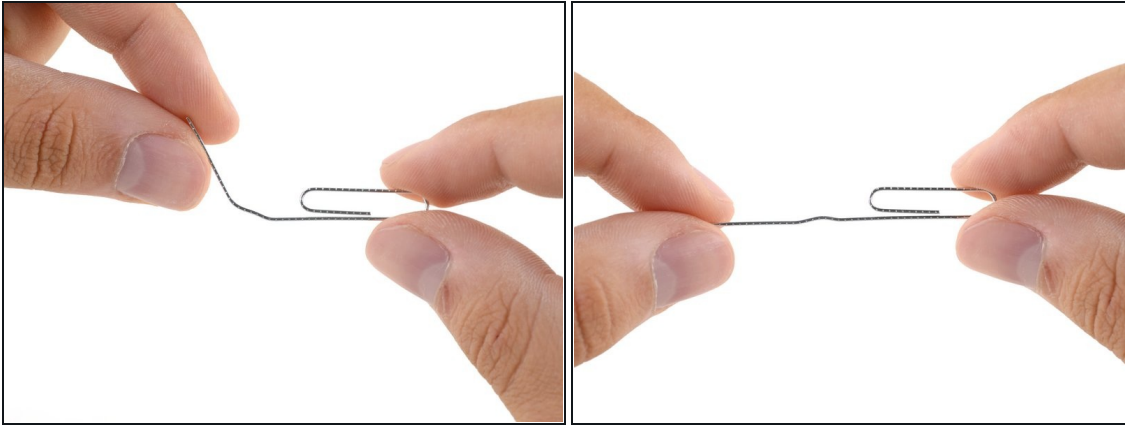
-  In order for the keyboard to be detached with the Detach buttons, both batteries must be charged above 10 percent. If your device doesn't power on and you can't use the Detach buttons, skip to the next step.
- Press and hold the Detach button on the keyboard.
 -  Once pressed, the Detach button it will light up red. After a second, it'll turn green and you'll hear an audible clicking sound.
- Alternatively, click the Detach icon on the right-hand side of the Windows 10 taskbar.
- Remove the display.

Step 2 — Manually detach the display



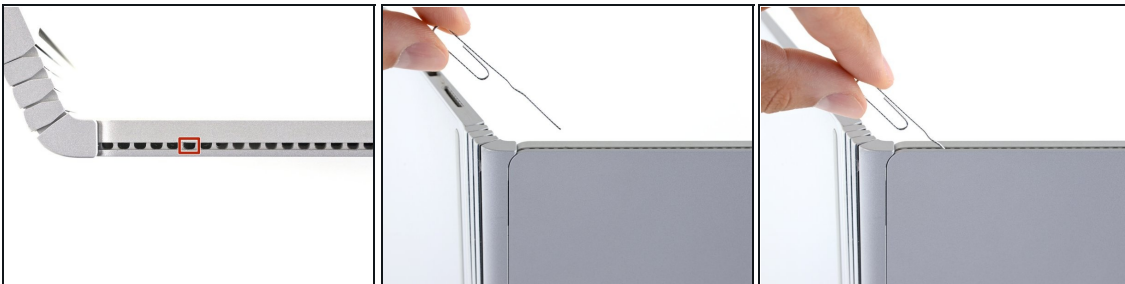
-  The next six steps show how to detach the display manually if you're unable to power on the Surface Book.
- Flip open the display as far as it will go.
- Lift the device up and place it on its side, with the display facing away from you and the SurfaceConnect port facing up.

Step 3 — Bend a paper clip



- Straighten out one section of a paper clip.

Step 4 — Push the paper clip into the hole



i The Surface Book has an internal lever arm mechanism that can be manually actuated through an access hole in the vents on side of the display.

- Insert the straight end of the paper clip at a 45 degree angle into the **sixth hole from the left**.

Step 5 — Release the mechanism



- Firmly push the paper clip into the hole.

i This may take a considerable amount of force.

i Once the internal lever arm is fully depressed, you can disconnect the display.

- Pull the base away from the display to detach it.

i If you are unable to detach the display from the base on this side, release pressure on the paper clip and try again.

Step 6 — Detach the second side



- ⓘ The magnetic connections are prone to snap back into place, so hold the two halves apart.
- With one side detached, pull firmly to pivot the display out to disconnect the second side.
- ⓘ If the magnetic connection feels extra strong and the display won't detach on the second side, [keep the detached side separated](#) with a spudger, pen, or pencil, and repeat the paper clip process on the other side of the display.

Step 7 — Remove the display



- Remove the display.

⚠ Completely power down your Surface Book before opening it up for any repairs.

To reattach the display, align the magnetic connectors and allow it to snap into place.

Procedure didn't go as planned? Check out our [Answers community](#) for troubleshooting help.