



Lenovo ThinkPad T580 CMOS Battery Replacement

Use this repair guide to replace the CMOS...

Written By: Austin Blakely



INTRODUCTION

Use this repair guide to replace the CMOS battery in the Lenovo ThinkPad T580. The CMOS battery provides constant power to the BIOS system, which is responsible for things like starting up your computer, keeping the time, and registering when the power button is pressed while the rest of the computer is off. If you have trouble booting your computer up while disconnected from wall power, your date and time settings are frequently resetting, or the hardware drivers aren't working properly, it's likely your issues lie in a faulty CMOS battery. Replace this little battery to alleviate your problems!



TOOLS:

[Jimmy](#) (1)
[Phillips #00 Screwdriver](#) (1)
[Spudger](#) (1)
[ESD Safe Blunt Nose Tweezers](#) (1)



PARTS:

[CR2032 Lithium Battery](#) (1)

Step 1 — External Battery



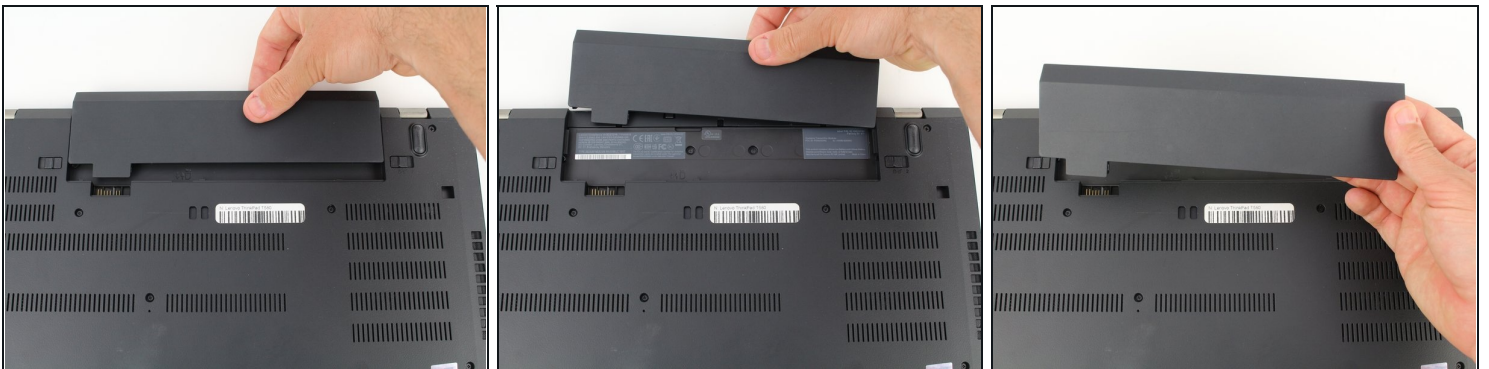
- Slide the switch on the left side of the battery to the left.

Step 2



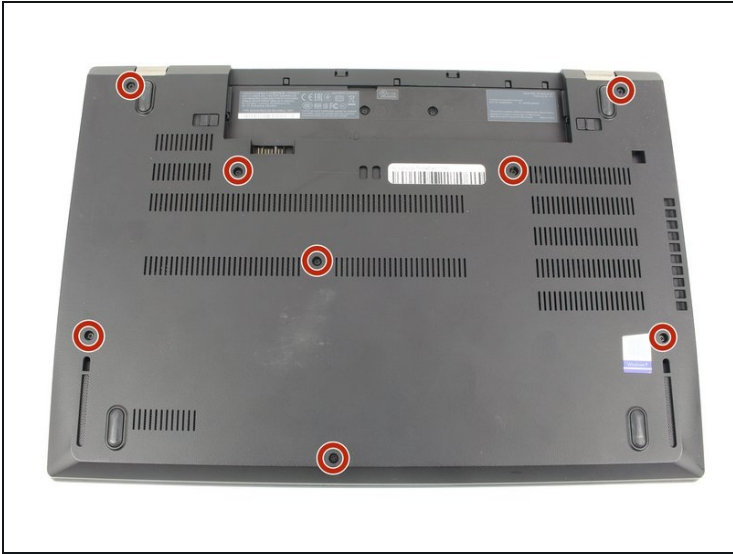
- Slide the switch on the right side of the battery to the right while applying upward pressure on the battery.

Step 3



- Pull the battery directly out of the socket

Step 4 — Bottom Case



- Using a Phillips #00 screwdriver, unscrew the eight 3.3 mm captive screws on the bottom of the laptop.

ⓘ The "captive" screws will not come out of the case.

Step 5



- Run a jimmy along the crease of the computer all the way around, twisting it periodically to disengage the clips.

Step 6



- Once all the clips are released, remove the bottom cover.
- ① You may need to jiggle the case slightly to release the clips around the external battery bay.

Step 7 — Internal Battery



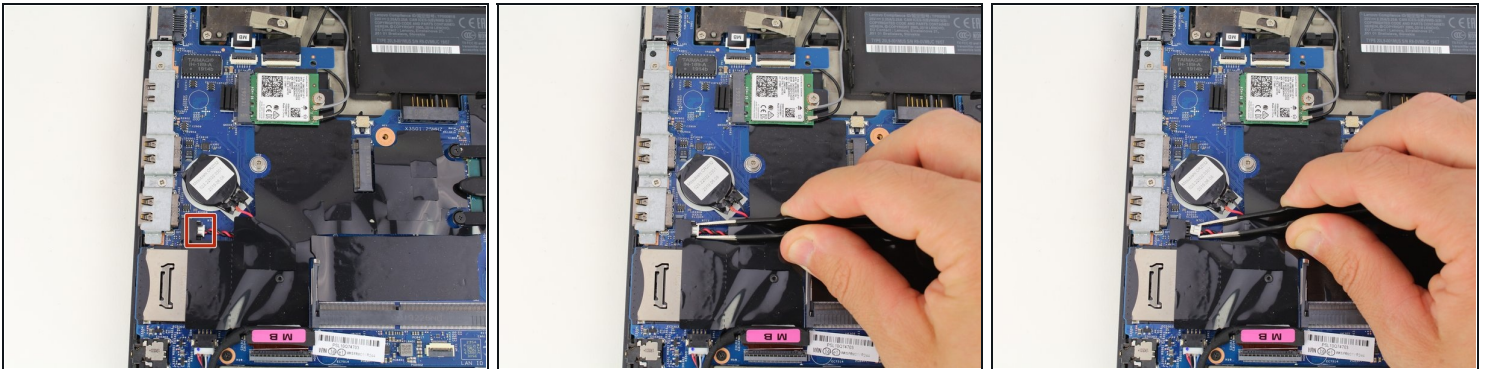
- Using a Phillips #00 screwdriver, remove five 3.7 mm screws holding down the battery.

Step 8



- Unplug and remove the battery connector from the motherboard.
- Remove the internal battery.

Step 9 — CMOS Battery



- Pull out the CMOS battery cable connector with a pair of blunt nose tweezers.

Step 10



- Using a spudger, pry the CMOS battery off of the motherboard.
- ① A light adhesive holds the CMOS battery down to the motherboard. Be careful not to puncture the battery while prying it off.
- Remove the CMOS battery.

To reassemble your device, follow these instructions in reverse order.