



# Lenovo ThinkPad T580 Keyboard Replacement

If the keyboard on your ThinkPad T580 stops...

Written By: Austin Blakely



## INTRODUCTION

If the keyboard on your ThinkPad T580 stops working, you can use this repair guide to fix it. The keyboard is responsible for relaying the physical input from the user to the motherboard, so if it isn't functioning properly it can prevent the owner from using the computer completely.

If your keyboard has malfunctioning keys, such as certain keys registering multiple presses when only pressed once, keys not registering presses at all, key chattering, or if your keyboard stops registering keypresses completely, replacing the keyboard should alleviate your problems.

Luckily, the keyboard in the ThinkPad T580 is modular and can be replaced from the front of the device. You don't even need to open the back cover!

---

### TOOLS:

[Jimmy](#) (1)

[Spudger](#) (1)

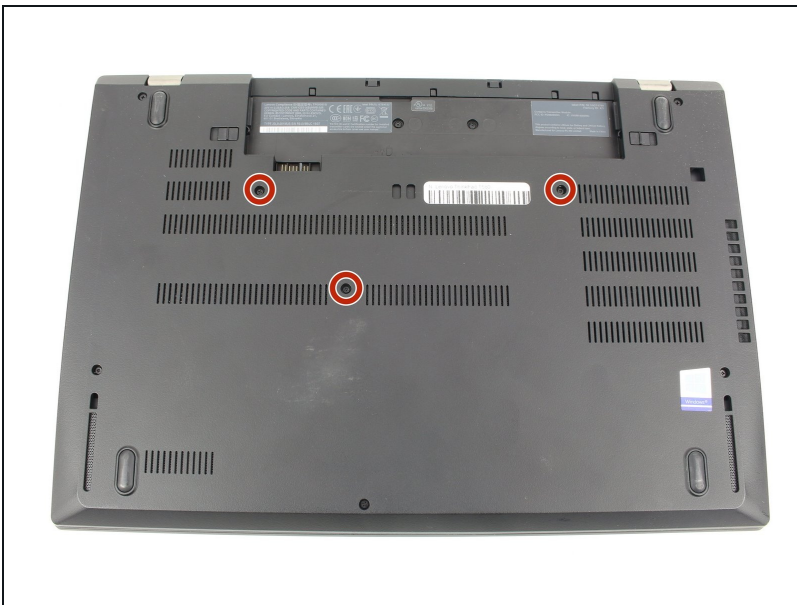
### PARTS:

[Lenovo ThinkPad Keyboard - 01HX219](#)

(1)

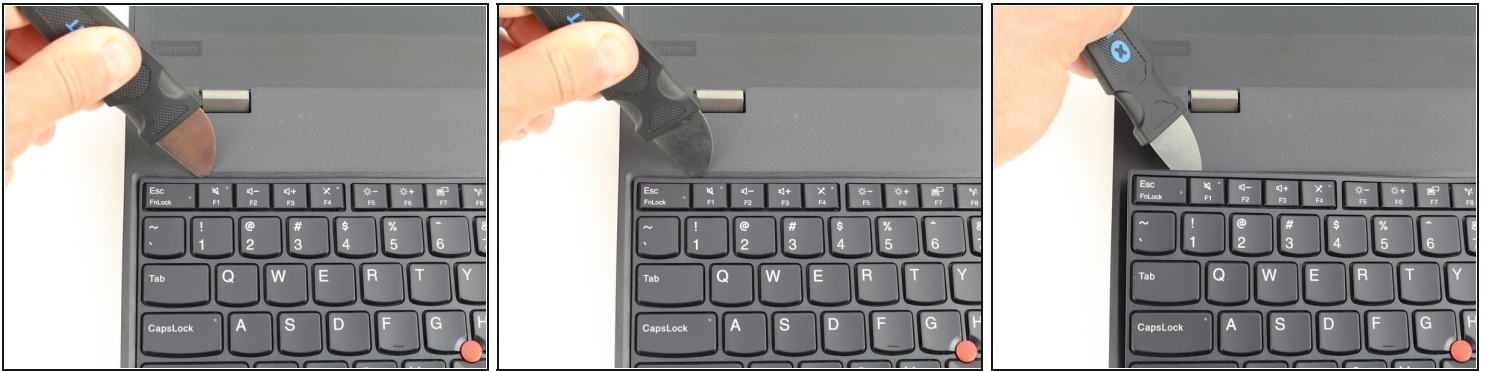
---

## Step 1 — Unfasten the keyboard



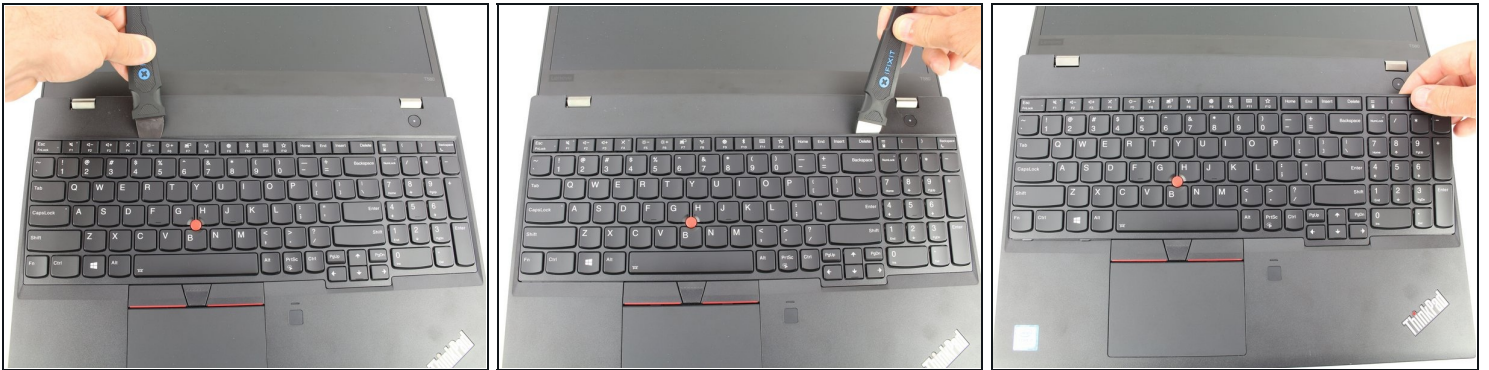
- Use a Phillips #00 screwdriver to unscrew the three 3.3 mm captive screws securing the keyboard.

## Step 2



- Use a Jimmy to pry under the top left corner of the keyboard.
- ⓘ You may hear a "click" or "pop" as the clips of the keyboard disengage.

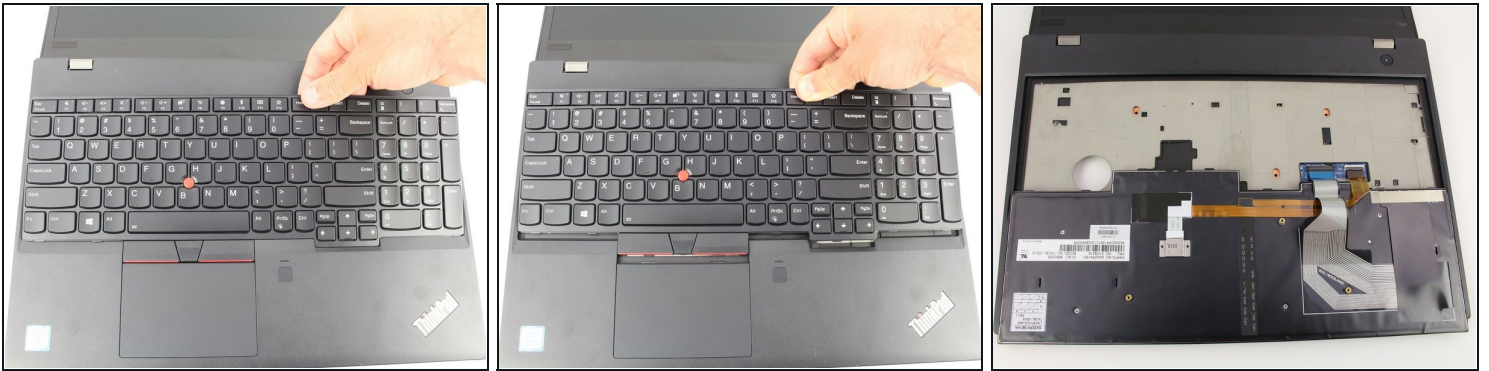
## Step 3



- Continue prying along the top edge of the keyboard, releasing the clips as you go.
- Once the top edge has been fully released, grab the top edge and hinge the keyboard upwards on the bottom edge.

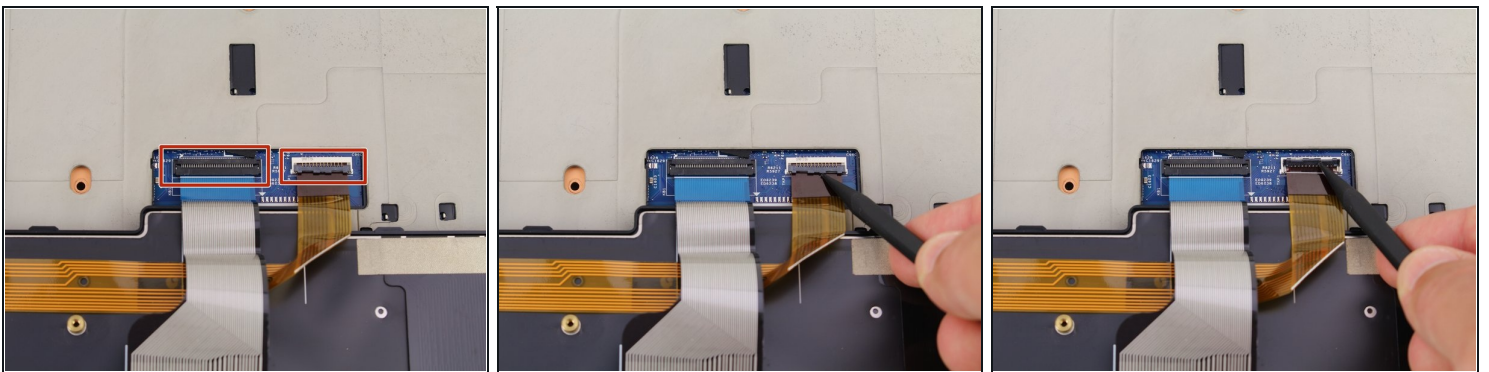


## Step 4



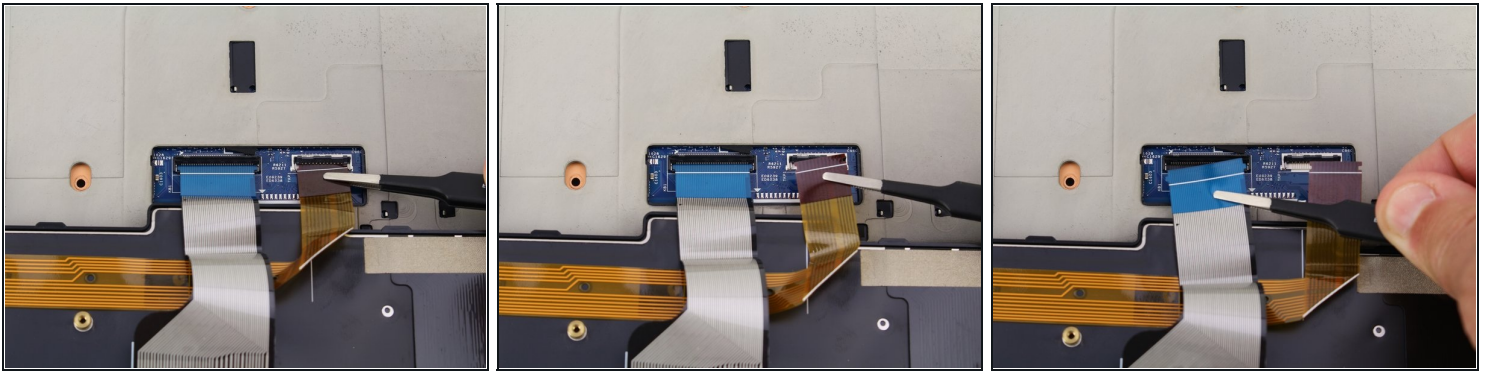
- Pull the keyboard away from you, releasing the tabs along the bottom edge.  
⚠ Be sure not to pull on the keyboard too excessively, as it is still connected to the motherboard via two ribbon cables.
- Flip the keyboard over to rest face down over the trackpad.

## Step 5



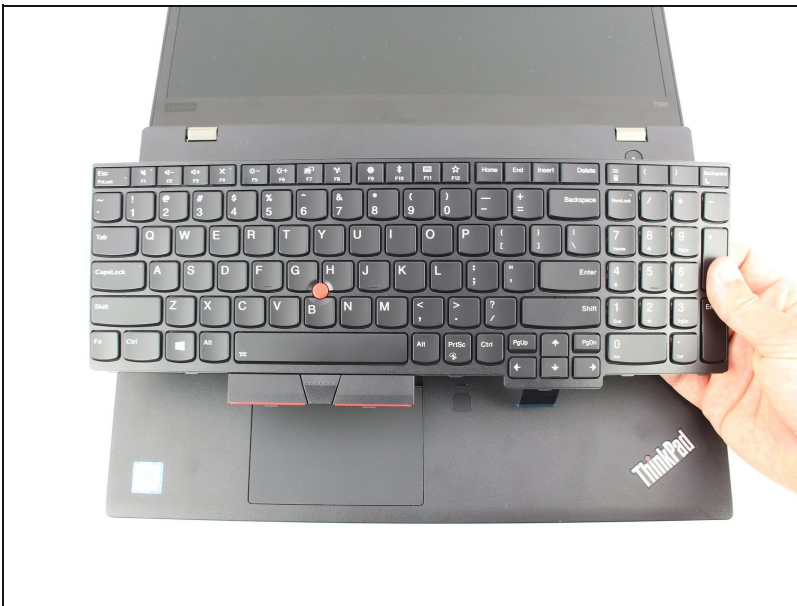
- Use a spudger to lift up the two black, hinged locking flaps on the [ZIF connectors](#) on the motherboard.

## Step 6



- Use a pair of blunt nose tweezers to pull the two keyboard ribbon cables out from the ZIF connectors.

## Step 7



- Remove the keyboard.

To reassemble your device, follow these instructions in reverse order.