



Lenovo ThinkPad T580 Fingerprint Sensor Replacement

If the fingerprint sensor on your Lenovo...

Written By: Austin Blakely



INTRODUCTION

If the fingerprint sensor on your Lenovo ThinkPad T580 computer breaks, stops working, or sustains damage, you can use this step-by-step repair guide to fix it! The fingerprint sensor is used to secure the device with a physical key (your fingerprint) rather than a digital one like a password. If the fingerprint sensor breaks or stops registering your fingerprint, you may find yourself locked out of your computer, which can be a nuisance.

Replacing the fingerprint sensor should allow you to continue using your fingerprint to unlock your computer, although you may need to register your fingerprint with the new board after replacing it. If this is the case, you'll need to remember your digital password to unlock the computer and re-register those fingerprints to the new sensor.

TOOLS:

[Jimmy](#) (1)

[Phillips #00 Screwdriver](#) (1)

[ESD Safe Blunt Nose Tweezers](#) (1)

[Spudger](#) (1)

Step 1 — External Battery



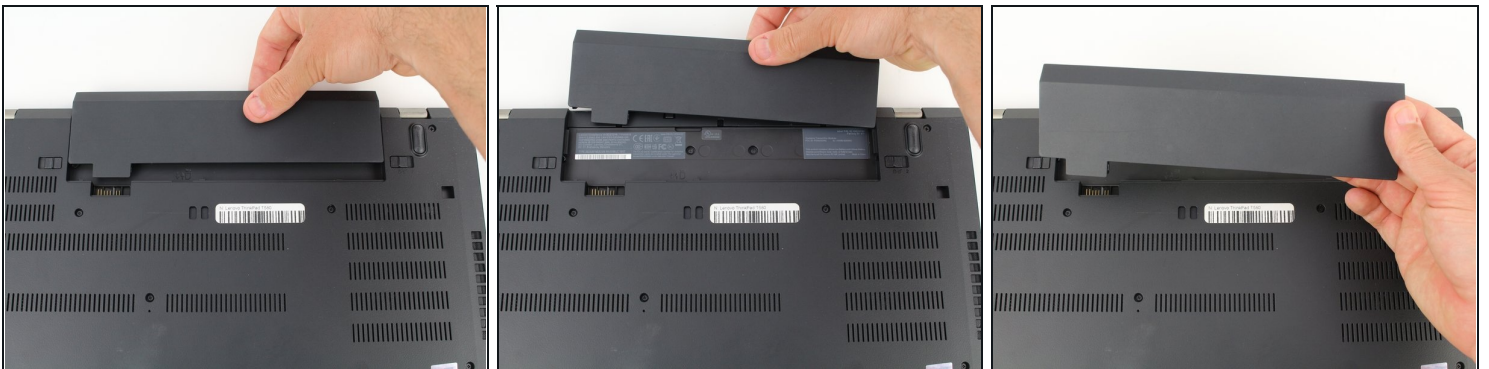
- Slide the switch on the left side of the battery to the left.

Step 2



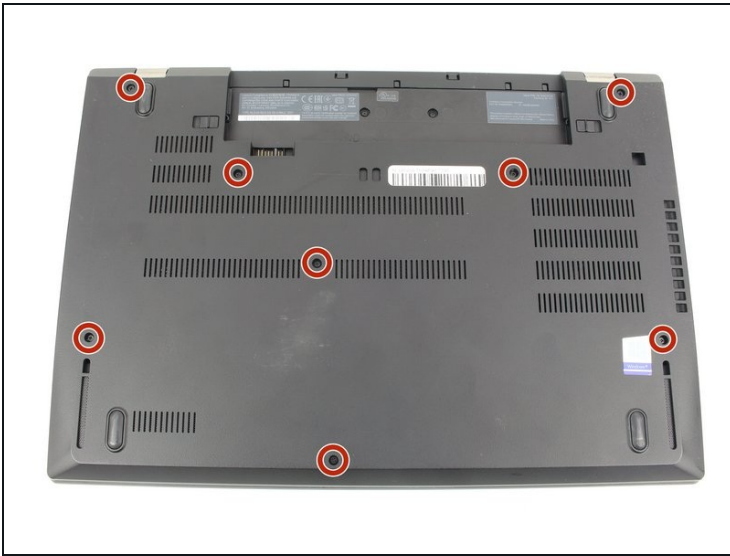
- Slide the switch on the right side of the battery to the right while applying upward pressure on the battery.

Step 3



- Pull the battery directly out of the socket

Step 4 — Bottom Case



- Using a Phillips #00 screwdriver, unscrew the eight 3.3 mm captive screws on the bottom of the laptop.

ⓘ The "captive" screws will not come out of the case.

Step 5



- Run a jimmy along the crease of the computer all the way around, twisting it periodically to disengage the clips.

Step 6



- Once all the clips are released, remove the bottom cover.
- ① You may need to jiggle the case slightly to release the clips around the external battery bay.

Step 7 — Internal Battery



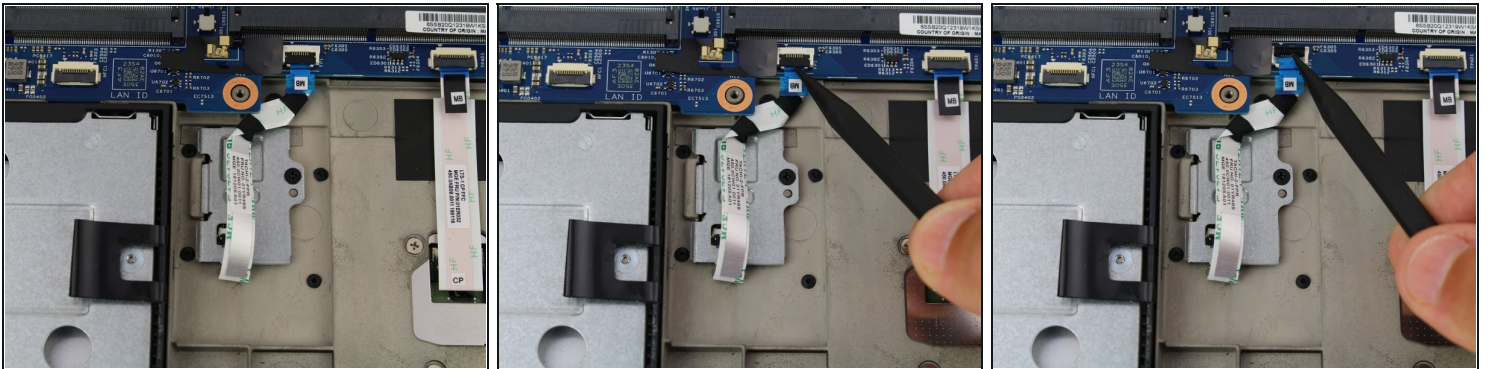
- Using a Phillips #00 screwdriver, remove five 3.7 mm screws holding down the battery.

Step 8



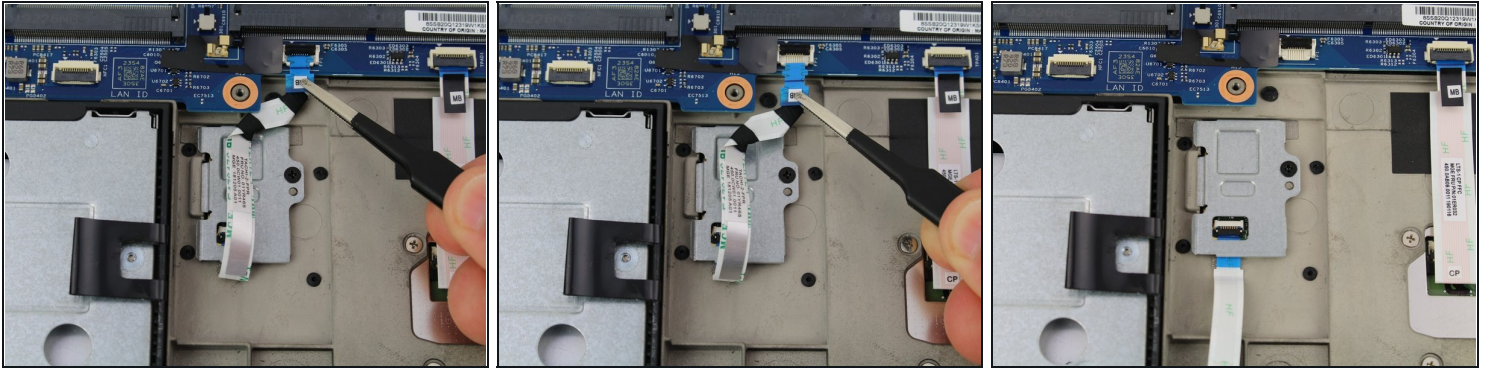
- Unplug and remove the battery connector from the motherboard.
- Remove the internal battery.

Step 9 — Fingerprint Sensor



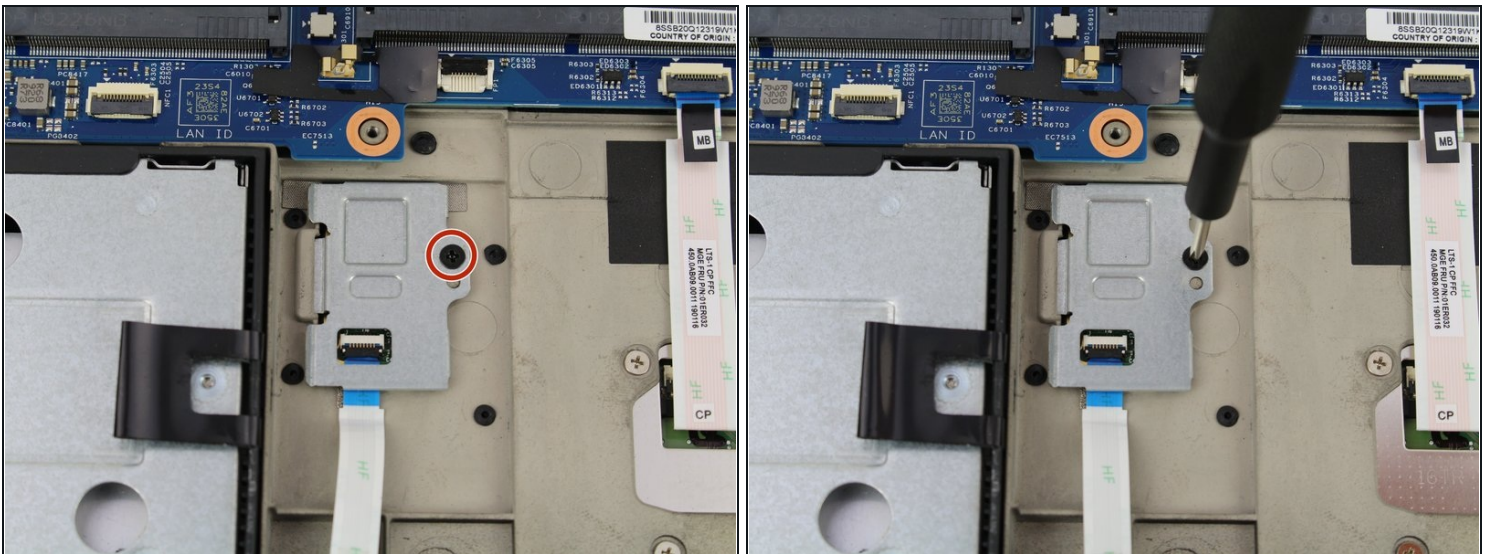
- Using a spudger, flip up the black tab of the fingerprint sensor's ZIF connector on the motherboard.

Step 10



- Pull out the fingerprint sensor ribbon cable from the ZIF connector using a pair of blunt nose tweezers.

Step 11



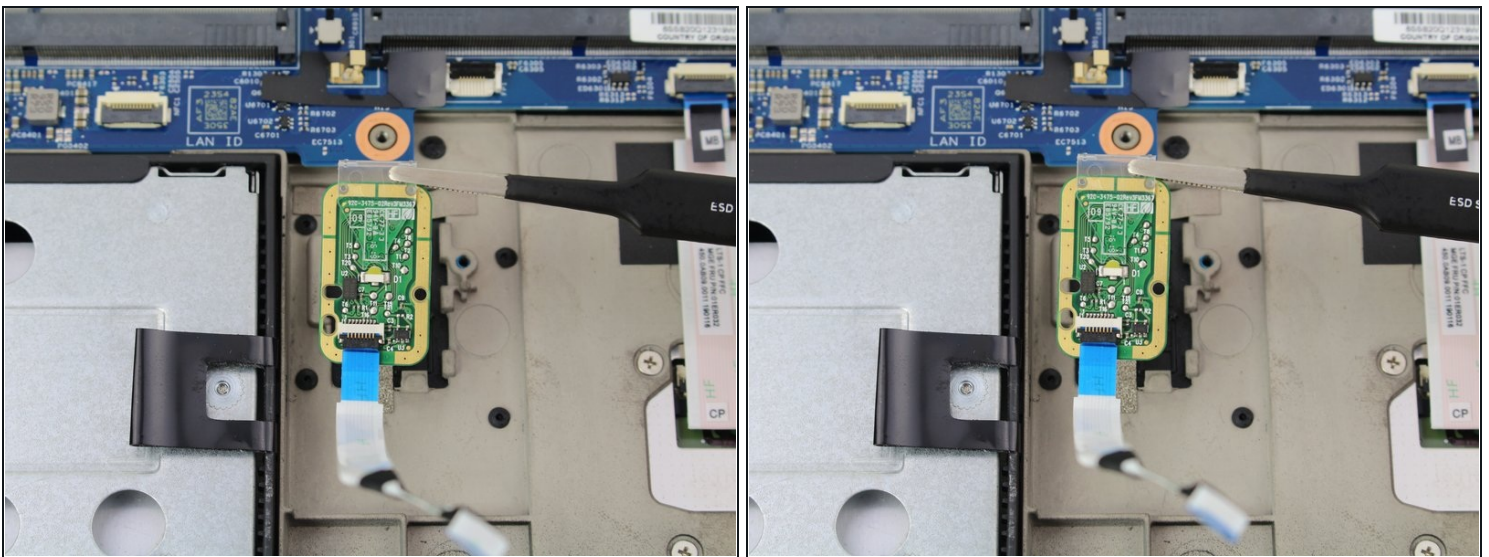
- Using a Phillips #00 screwdriver, remove the 3.0 mm screw from the fingerprint sensor bracket.

Step 12



- Lift the bracket off of the fingerprint sensor board with a set of blunt nose tweezers.

Step 13



- Lift the fingerprint sensor out from the device with a pair of blunt nose tweezers.

To reassemble your device, follow these instructions in reverse order.