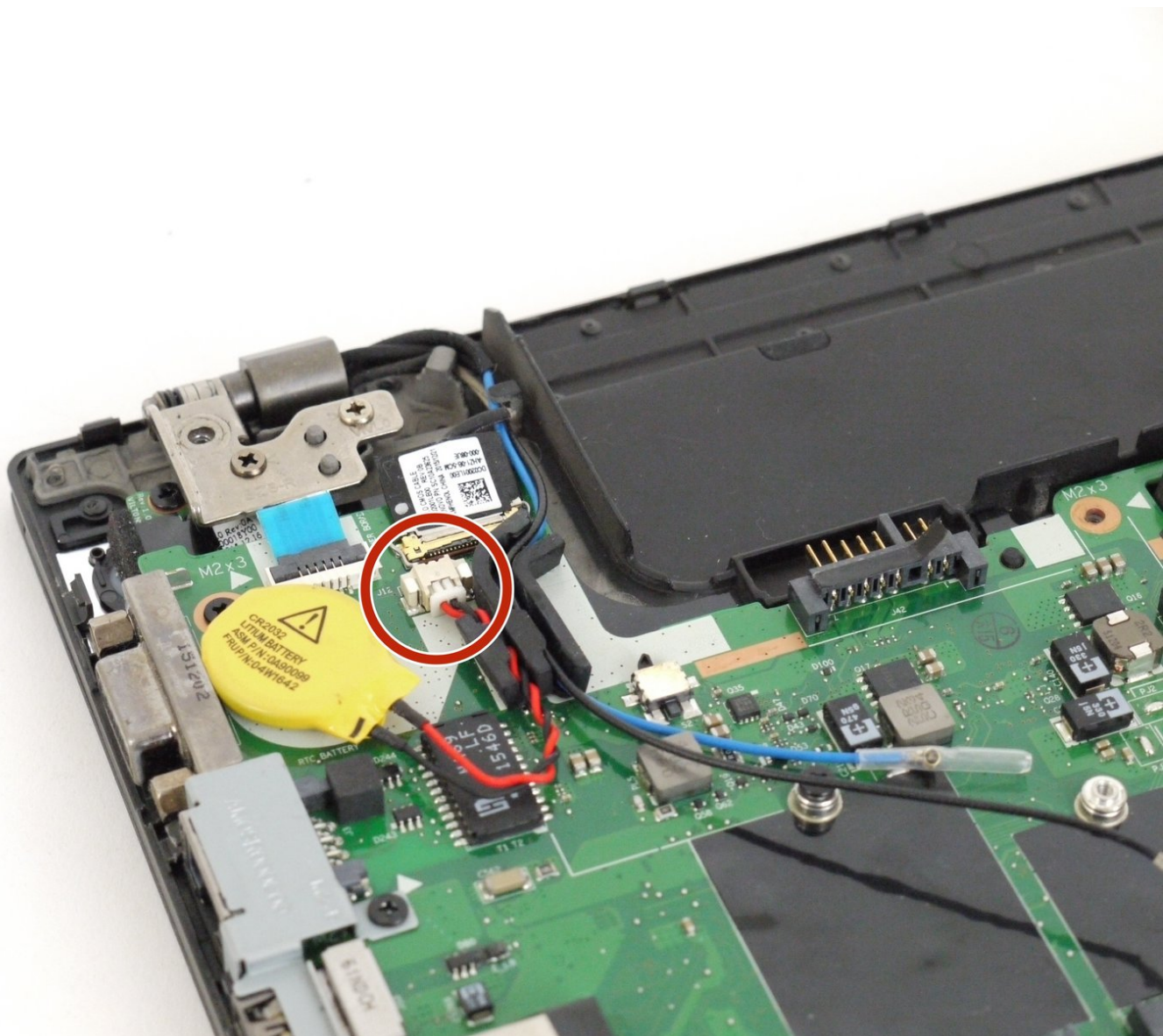




Lenovo Thinkpad T450 CMOS Battery Replacement

This guide will show you how to remove and replace the CMOS battery in the Lenovo ThinkPad T450 laptop.

Written By: Justin Ogihara



INTRODUCTION

The CMOS (Complementary Metal Oxide Semiconductor) battery powers the BIOS firmware in a computer. The CMOS battery is a chip that is typically found in laptops rather than desktops. When you unplug your laptop from its power source, the BIOS relies on the CMOS battery for power. Most CMOS batteries in laptops will last 2 to 10 years from the date they were manufactured.

Common CMOS battery failure symptoms include the following:

- Constant beeping noise coming from the motherboard
- Date and time of the computer have been reset
- Hardware drivers are missing or have disappeared
- Can't connect to the Internet
- Laptop won't boot up

If your device is experiencing any of the above symptoms, it may be time to replace the CMOS battery. Follow the instructions below to remove and replace the CMOS battery in the Lenovo ThinkPad T450 laptop.



TOOLS:

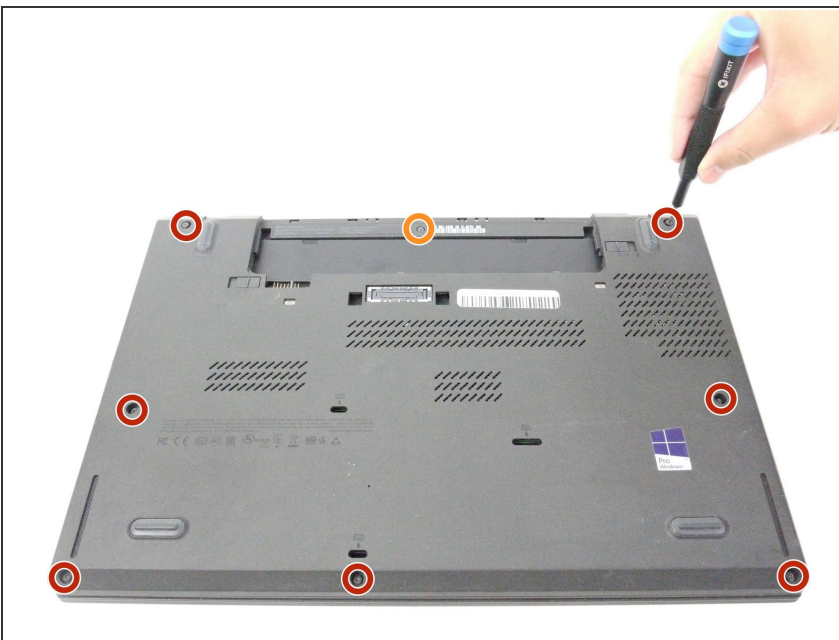
- [JIS #00 Screwdriver](#) (1)
 - [iFixit Opening Tool](#) (1)
-

Step 1 — External Battery



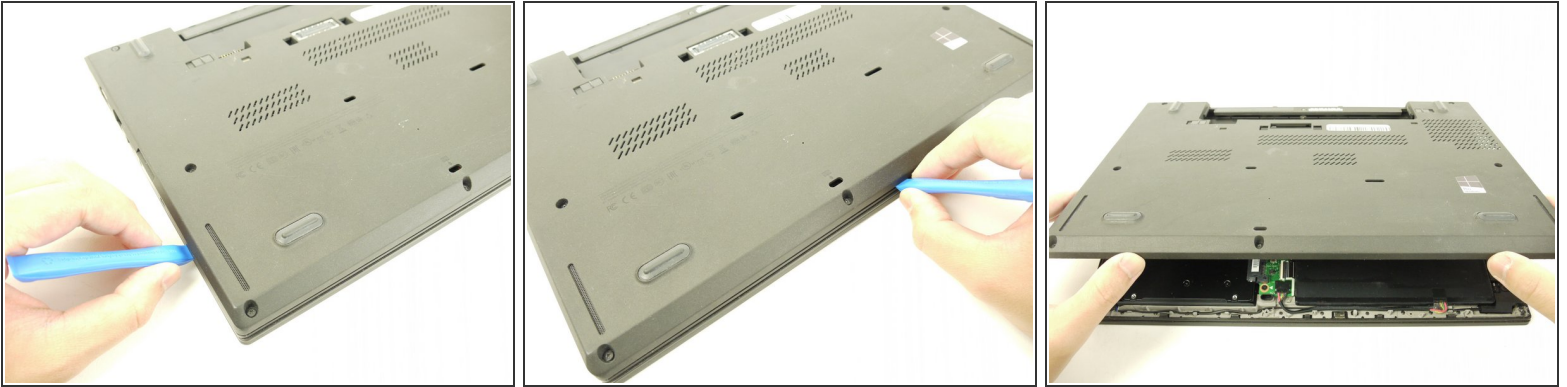
- Using your hands, slide the two locking tabs away from each other to release the battery.
- Slide the battery up and out of the device.

Step 2 — Back Cover



- Using the JIS #00 screwdriver, unscrew seven screws from the back cover.
 - ⓘ These screws are not removable and will remain in the back cover.
- Use the JIS #00 screwdriver to remove the single 2.8 mm screw from the back cover.

Step 3



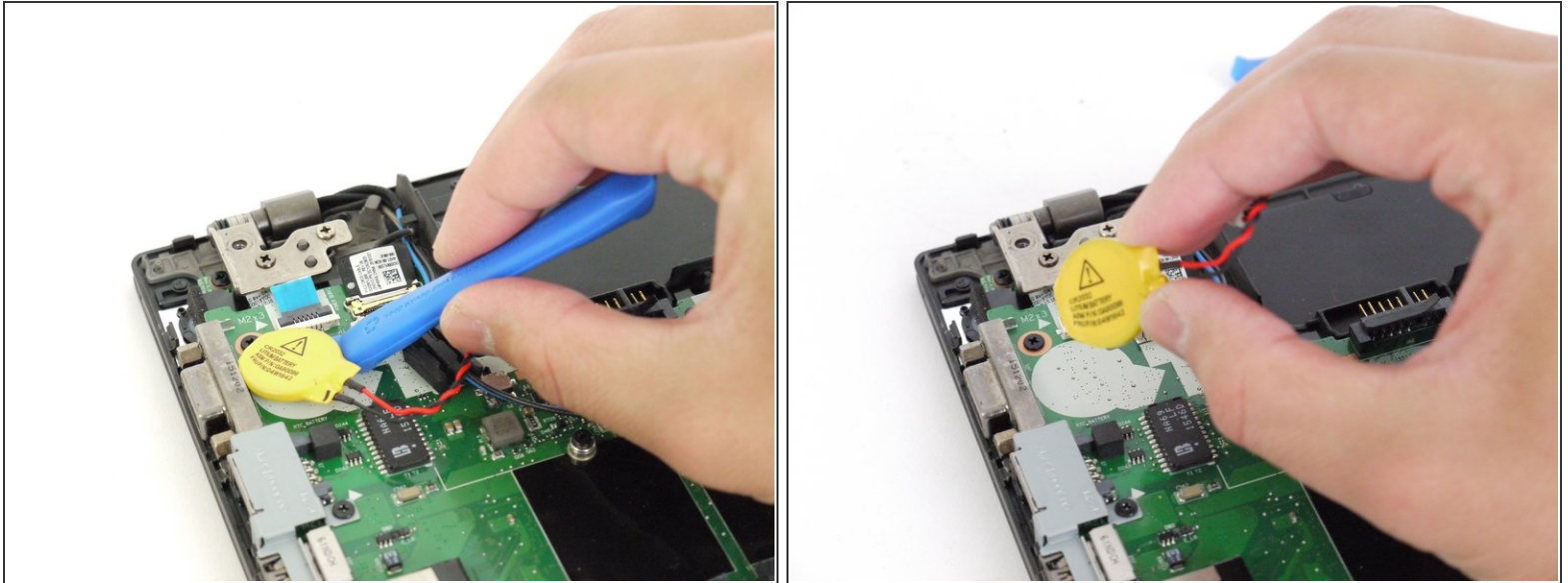
- Insert a plastic opening tool into the edges of the laptop and work your way around the edges to pry off the back cover from the device.
- Remove the back cover from the device.

Step 4 — CMOS Battery



- Using the plastic opening tool, disconnect the CMOS battery from the motherboard.

Step 5



- Insert the plastic opening tool underneath the CMOS battery and pry it up and away from the motherboard.
- ☑ When you reassemble your device, you may need to reapply adhesive to the back of the CMOS battery.

To reassemble your device, follow these instructions in reverse order.

Take your e-waste to an [R2 or e-Stewards certified recycler](#).