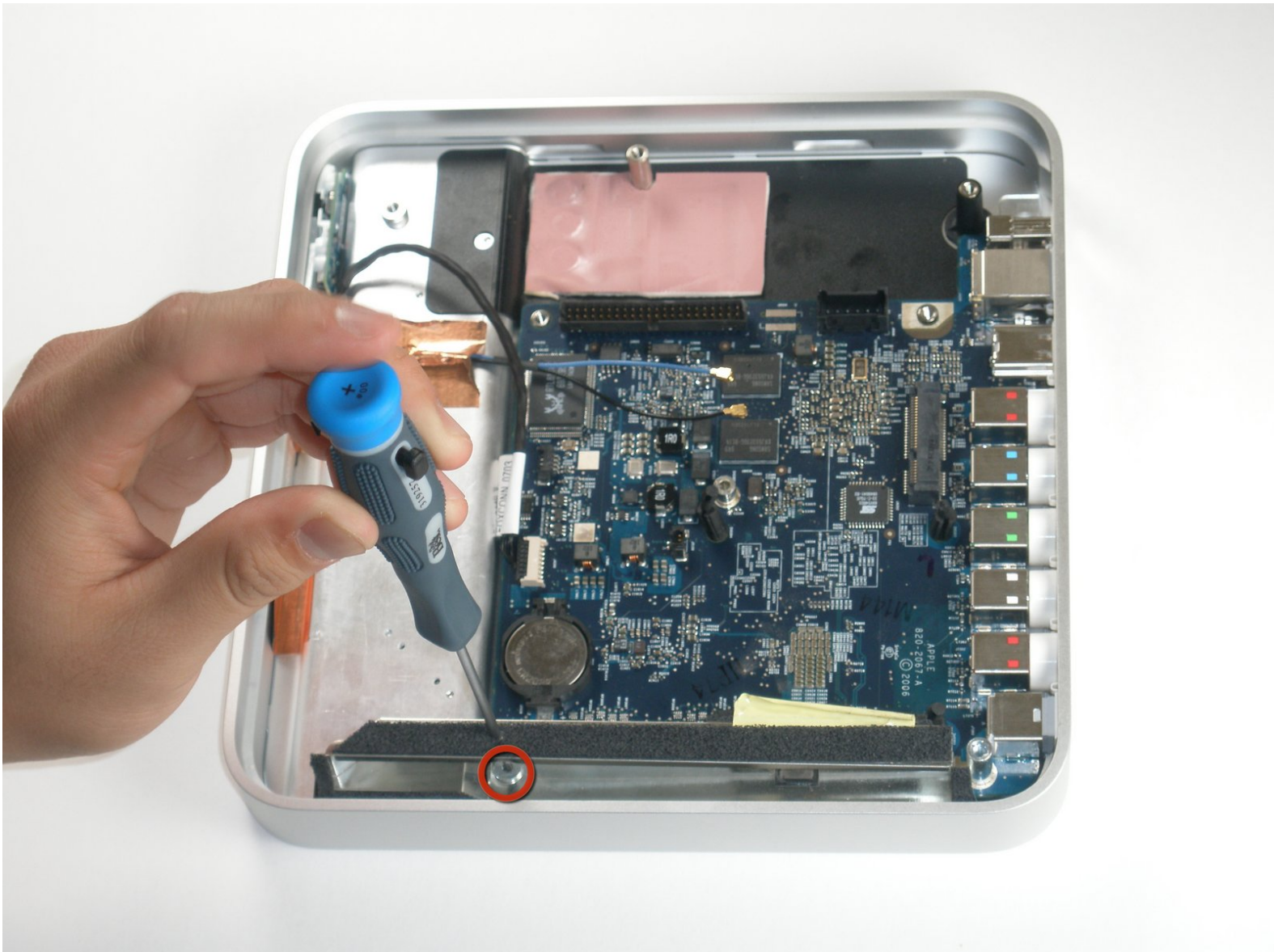




# Apple TV 1st Generation Logic Board Replacement

Replace your Apple TV's 1st Generation logic board.

Written By: kelsey8800



# INTRODUCTION

Replace your Apple TV's 1st Generation logic board.



## TOOLS:

- [TR10 Torx Security Screwdriver](#) (1)
- [T20 Torx Screwdriver Bit](#) (1)
- [TR8 Torx Security Screwdriver](#) (1)
- [Tweezers](#) (1)



## PARTS:

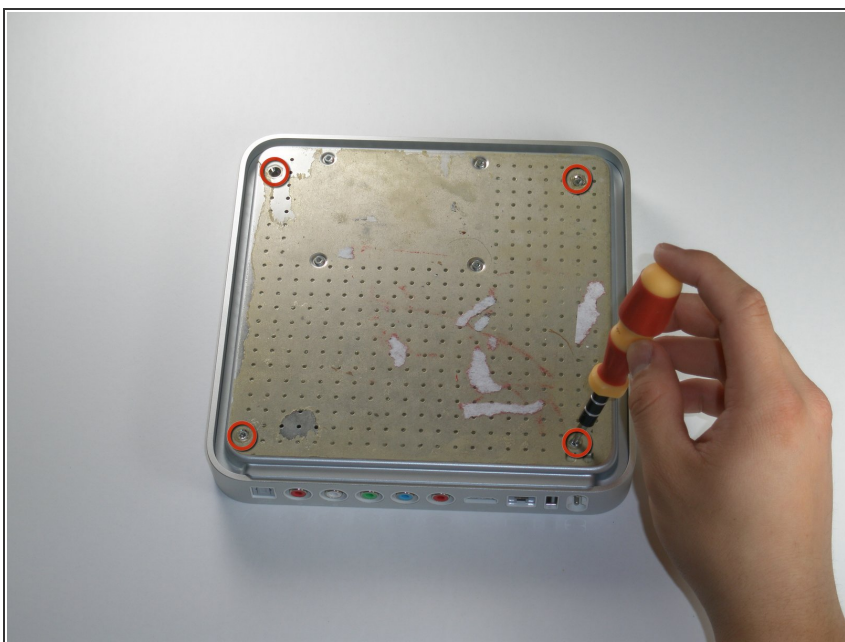
- [Thermal Paste](#) (1)

## Step 1 — Lower Case



- ✦ Flip the Apple TV over so that the bottom of the unit is facing up.
- ⓘ You need to remove the rubber base to get access to the screws.
  - Starting at one side of the device, use a hairdryer or a heat gun to soften the adhesive holding the rubber base in place.
- ⚠ The rubber base will be hot after heating, take extreme caution while proceeding to avoid personal injury.
- While the adhesive is still warm, peel the bottom of the rubber base upwards to detach it from the metal plate.
- ⚠ The rubber base can tear if the adhesive hasn't been softened enough.
- Repeat the procedure described above until the rubber base has been completely removed.

## Step 2



- Remove the four T10 Torx screws that secure the lower case to the upper case.

## Step 3

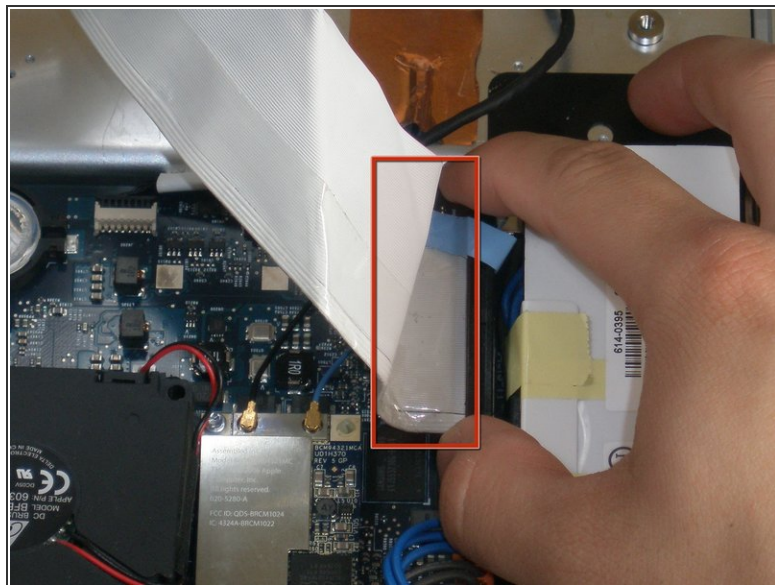


- Carefully lift the lower case from the upper case enough to allow access to the internals of the Apple TV.

⚠ Be aware that the hard drive is physically attached to the lower case and that a ribbon cable runs from the drive to the logic board in the upper case.



## Step 4



- Carefully pull the hard drive data cable straight up from its socket on the logic board.
- ☑ During reassembly, make sure the hard drive data cable is firmly seated in its socket on the logic board; otherwise, during boot-up you will see a flashing question mark "?".

## Step 5 — Fan



- ❗ The fan is held in place by three rubber posts.
- Using a pair of tweezers, squeeze the top of each post and push the post down into the hole. Repeat for all three posts.
- ❗ During reinstallation, it helps to lubricate the rubber posts. Try weaving a string through the holes in the posts to pull them up through the mounting points.

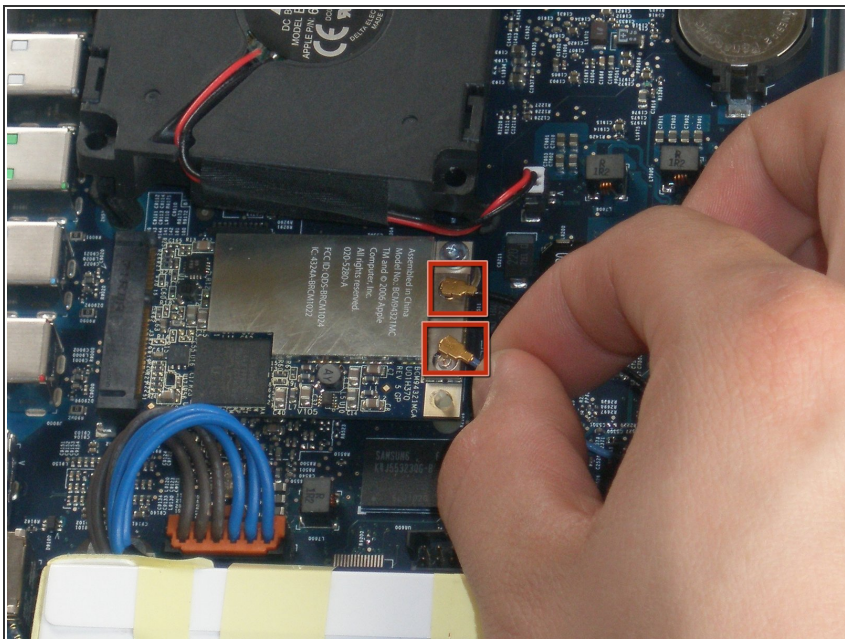
⚠ Do not excessively pull on the posts, as they may rip.

## Step 6



- Using a pair of tweezers, pull the fan connector straight up from its socket on the logic board.
- Lift and remove the fan out of the upper case.

## Step 7 — AirPort Card



- Pry the AirPort antenna cables straight up from their sockets on the logic board.

## Step 8



- Remove the single T8 Torx screw securing the AirPort card to the logic board.

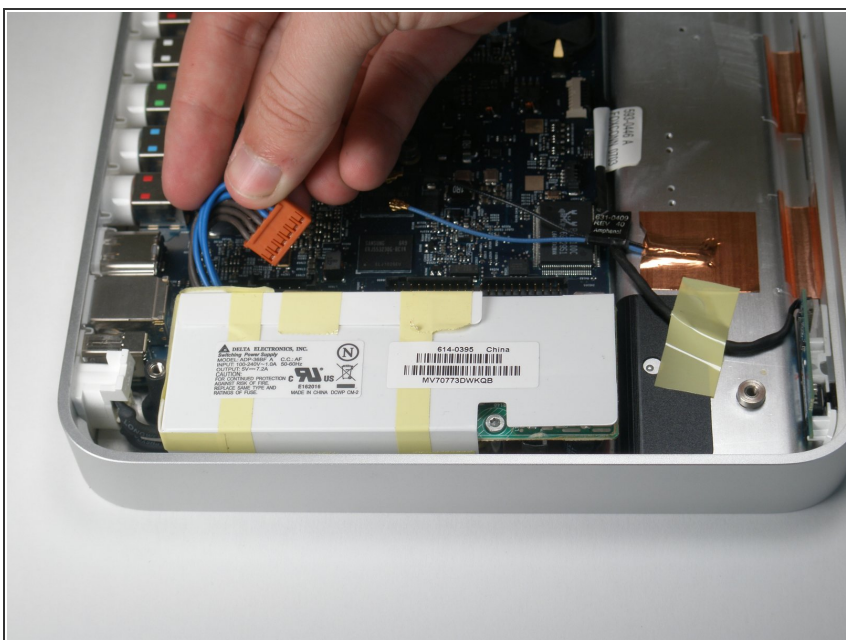


## Step 9



- Cautiously lift the AirPort card and pull it straight away. Slide it from its socket on the logic board.

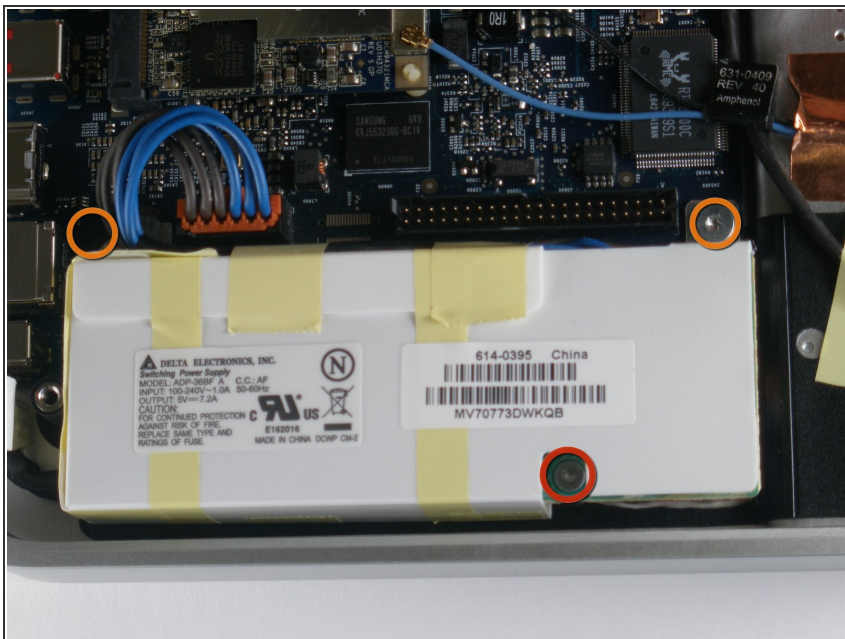
## Step 10 — Power Supply



- Disconnect the power cable straight up from its socket on the logic board.
- ⓘ There is a release tab that must be pushed inwards in conjunction with pulling to release the power cable
- ★ Make sure to pull the connector straight up from its socket and not toward the face of the logic board.



## Step 11



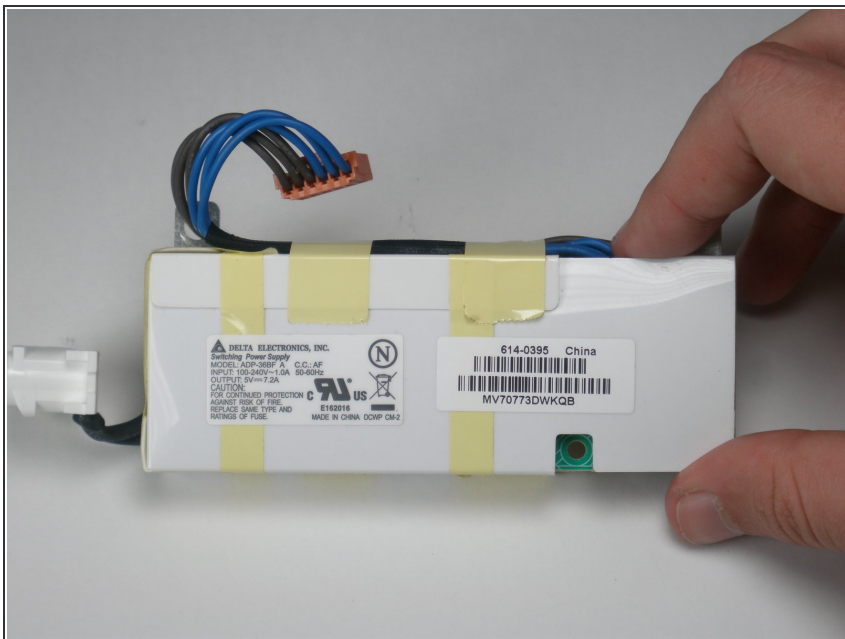
- Remove the following three screws securing the power supply to the upper case:
  - One 4.8 mm T8 Torx screw
  - Two 5.8 mm T8 Torx screws

## Step 12



- Use your finger to push and dislodge the AC power connector inwards, towards the power supply.
- i** This should pop out easily.

## Step 13



- Power supply remains.

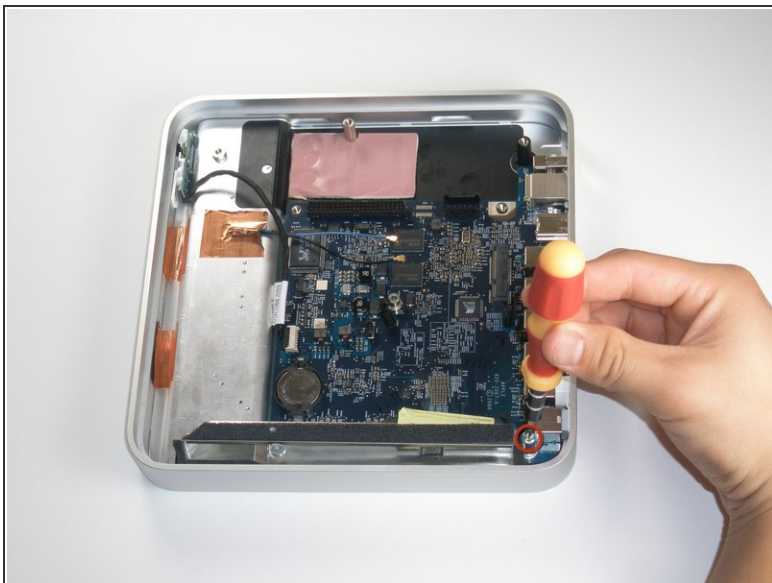
## Step 14 — Logic Board



- Remove the T8 Torx screw securing the metal shield to the case.
- ⓘ To remove the T8 screw, you must insert the screwdriver through the access hole in the metal shield. The access hole is located near the PRAM battery.



## Step 15



- Remove the T20 screw located near the digital audio port.
- Lift and remove the metal shield from the upper case of the Apple TV.

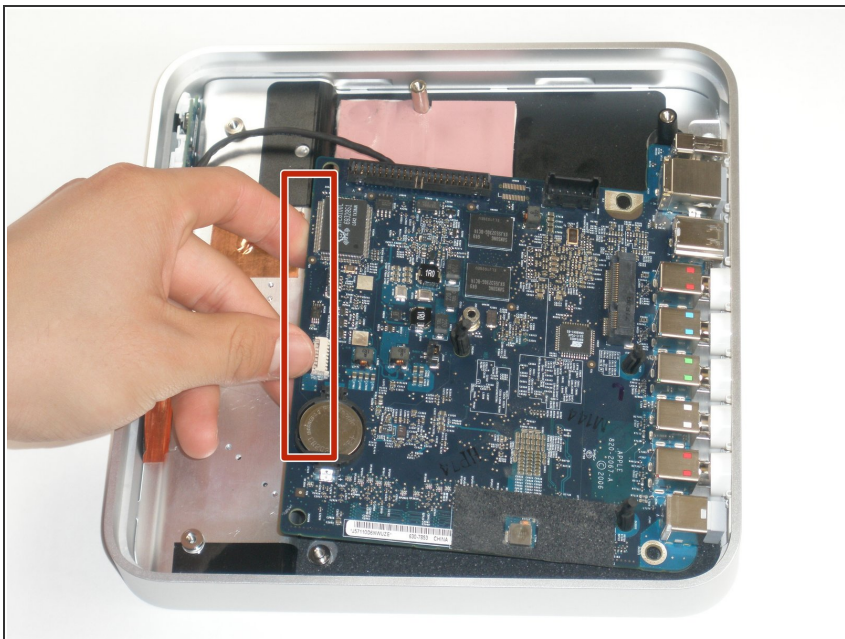
## Step 16




- Use a pair of tweezers to pull the IR cable straight away from its socket on the logic board.
- ⓘ Make sure to pull the connector parallel to the face of the logic board. Do not pull the connector straight up.



## Step 17



- Lift the left edge of the logic board (nearest the PRAM battery) upwards and slide it out of the case, away from the ports.

 Be careful not to damage the ports when sliding the logic board out of case.

- The logic board remains.

To reassemble your device, follow these instructions in reverse order.