



# Weed Eater Rotary Lawn Mower Engine Control Cable Replacement

A common cause of failure among push mowers is...

Written By: Jon Hurt





## INTRODUCTION

A common cause of failure among push mowers is the engine control cable. Older cables that have broken, stretched, or bonded to their sheath may prevent the mower from starting. Owners of this mower may not understand how to diagnose a faulty engine control cable.

As a result, owners may unnecessarily replace other, more expensive parts, or may purchase a replacement mower when the engine control cable fails. Fortunately, it is possible and cost effective to repair a broken engine control cable. This guide provides users with the necessary steps to replace the part, enabling continued use of the Weed Eater Rotary lawn mower.

When the engine control cable fails the lawn mower will not start at all; however, if the if the mower starts and then dies, it is not likely that the cable is the issue. Signs that the engine control cable needs to be replaced include:

- The engine control cable does not fully squeeze the brake assembly arms together, or
- The engine control cable may partially squeeze the brake assembly arms together.



### TOOLS:

- [6-in-1 Screwdriver](#) (1)
- [Small Needle Nose Pliers](#) (1)
- [Work Gloves](#) (1)
- [Utility Scissors](#) (1)



### PARTS:

- [Control Cable 158152](#) (1)
- [Zip Ties](#) (2)

## Step 1 — Engine Control Cable



- Disconnect the spark plug wire and tuck it away from the spark plug to avoid any accidental startups.

**⚠ CAUTION:** failure to disconnect the spark plug wire may lead to bodily injury and/or equipment damage.

## Step 2



- To remove the cable bracket from the handle, insert the flathead screwdriver into the bottom of the bracket and pry it off.



### Step 3



- Use the utility shears to cut the zip ties which secure the cable to the upper and lower handles of the mower.

### Step 4



- Use the needle nose pliers to remove the cotter pin holding the rear wheel cable clip in place.
- Remove the clip from the retaining post.

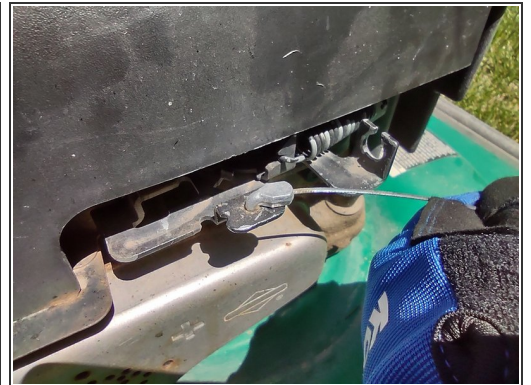


## Step 5



- Disconnect the Z end of the cable from the control bar.
- ⓘ You may need to slightly pull the cable toward the control bar to get enough slack to remove the hook.

## Step 6



- Use the needle nose pliers to squeeze the wings of the retaining clip together; push it through the hole in the brake assembly plate.
- Remove the Z end of the cable from the brake assembly retaining plate.



## Step 7



- To install the new engine control cable:
  - Attach the Z end of the cable to the brake assembly retaining plate.
  - Push the plastic retaining clip through the hole in the brake assembly plate.

## Step 8



- Attach the cable to the control bar by pushing the Z end of the cable into the hole.



## Step 9



- Slide the cable clip onto the rear wheel retaining post.
- Use the needle nose pliers to attach the cotter pin to the retaining post.

## Step 10



- Attach the cable bracket to the upper handle of the mower.
- i** You may need to use both hands to squeeze the bracket onto the handle.



## Step 11



- Secure the cable to the upper and lower handle of the mower with zip ties.
- Clip the ends of the zip ties off.

**⚠ CAUTION:** The zip ties may have sharp edges after being trimmed. Turn the zip ties underneath the frame to avoid bodily injury when working around the mower.

## Step 12



- Reconnect the spark plug wire to the spark plug.