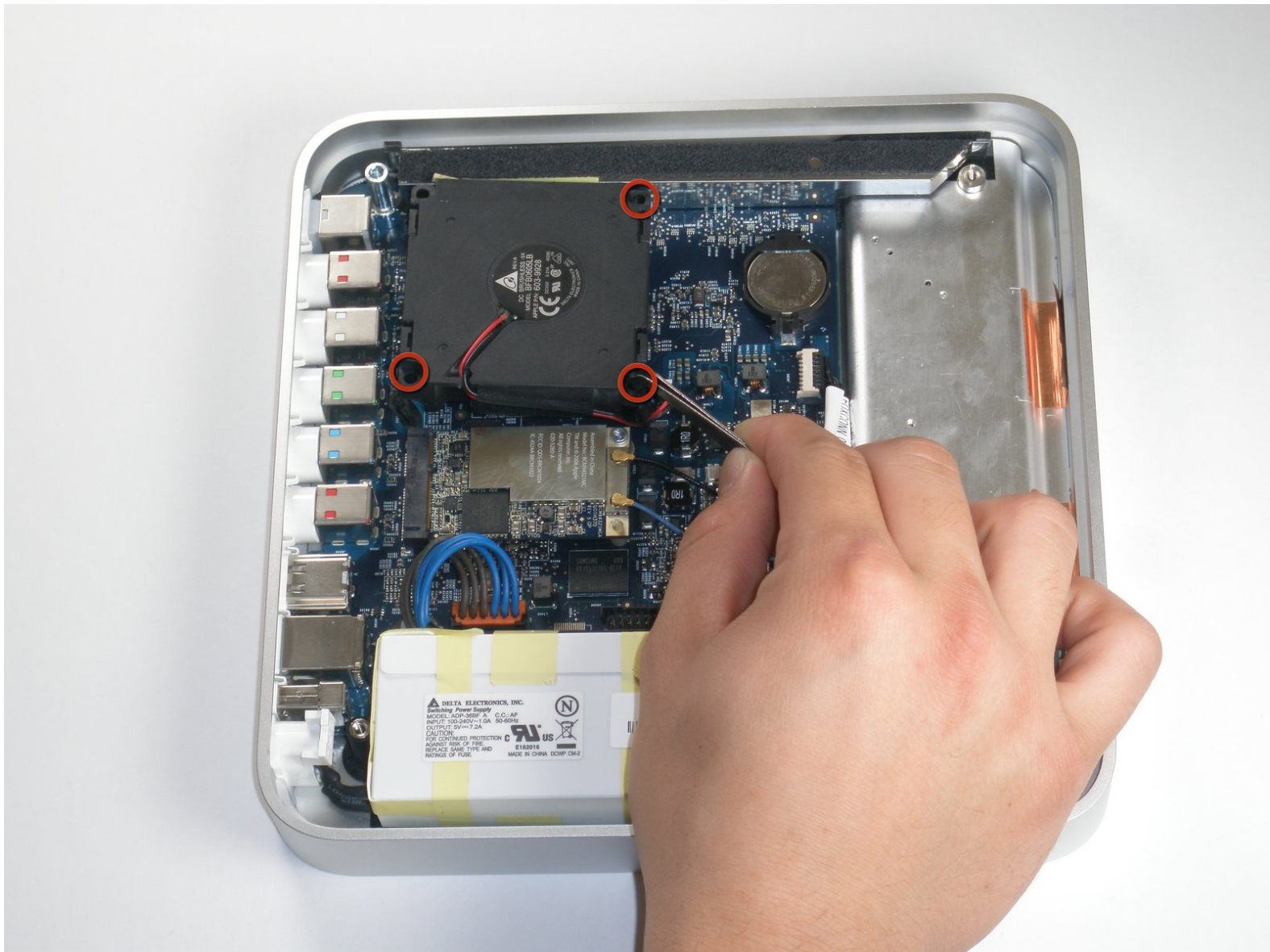




Apple TV 1st Generation Fan Replacement

Replace the fan in your Apple TV 1st Generation.

Written By: ropel



INTRODUCTION

Replace the fan in your Apple TV 1st Generation.



TOOLS:

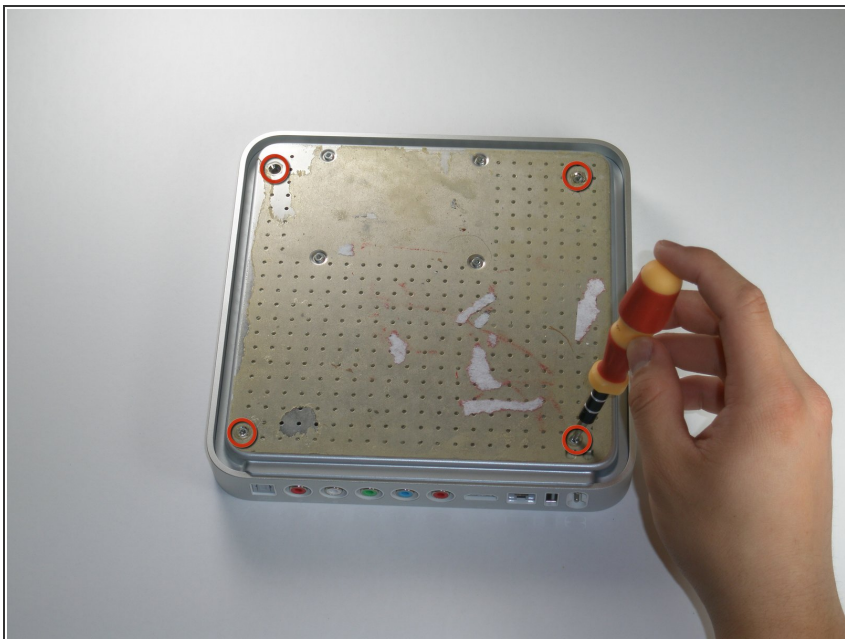
- [TR10 Torx Security Screwdriver](#) (1)
 - [Tweezers](#) (1)
-

Step 1 — Lower Case



- ✦ Flip the Apple TV over so that the bottom of the unit is facing up.
- ⓘ You need to remove the rubber base to get access to the screws.
 - Starting at one side of the device, use a hairdryer or a heat gun to soften the adhesive holding the rubber base in place.
- ⚠ The rubber base will be hot after heating, take extreme caution while proceeding to avoid personal injury.
- While the adhesive is still warm, peel the bottom of the rubber base upwards to detach it from the metal plate.
- ⚠ The rubber base can tear if the adhesive hasn't been softened enough.
- Repeat the procedure described above until the rubber base has been completely removed.

Step 2



- Remove the four T10 Torx screws that secure the lower case to the upper case.

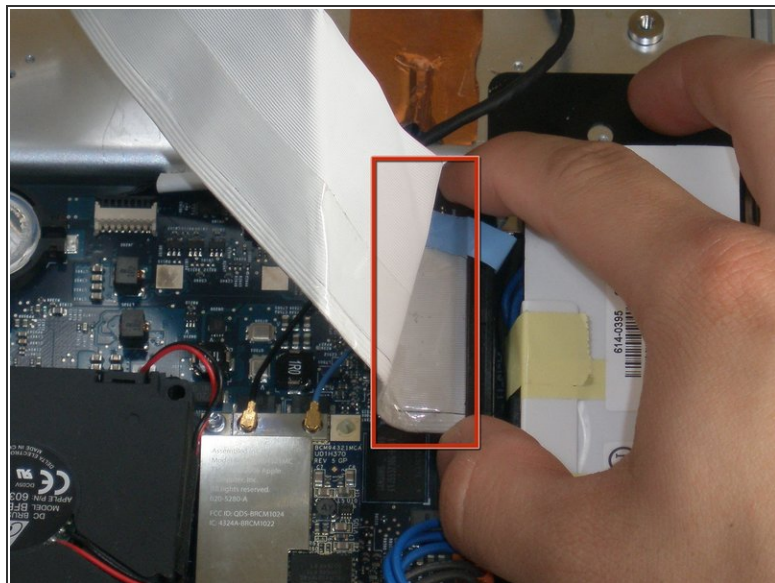
Step 3



- Carefully lift the lower case from the upper case enough to allow access to the internals of the Apple TV.

⚠ Be aware that the hard drive is physically attached to the lower case and that a ribbon cable runs from the drive to the logic board in the upper case.

Step 4



- Carefully pull the hard drive data cable straight up from its socket on the logic board.
- ☑ During reassembly, make sure the hard drive data cable is firmly seated in its socket on the logic board; otherwise, during boot-up you will see a flashing question mark "?".

Step 5 — Fan



- ❗ The fan is held in place by three rubber posts.
- Using a pair of tweezers, squeeze the top of each post and push the post down into the hole. Repeat for all three posts.
- ❗ During reinstallation, it helps to lubricate the rubber posts. Try weaving a string through the holes in the posts to pull them up through the mounting points.

⚠ Do not excessively pull on the posts, as they may rip.

Step 6



- Using a pair of tweezers, pull the fan connector straight up from its socket on the logic board.
- Lift and remove the fan out of the upper case.

To reassemble your device, follow these instructions in reverse order.