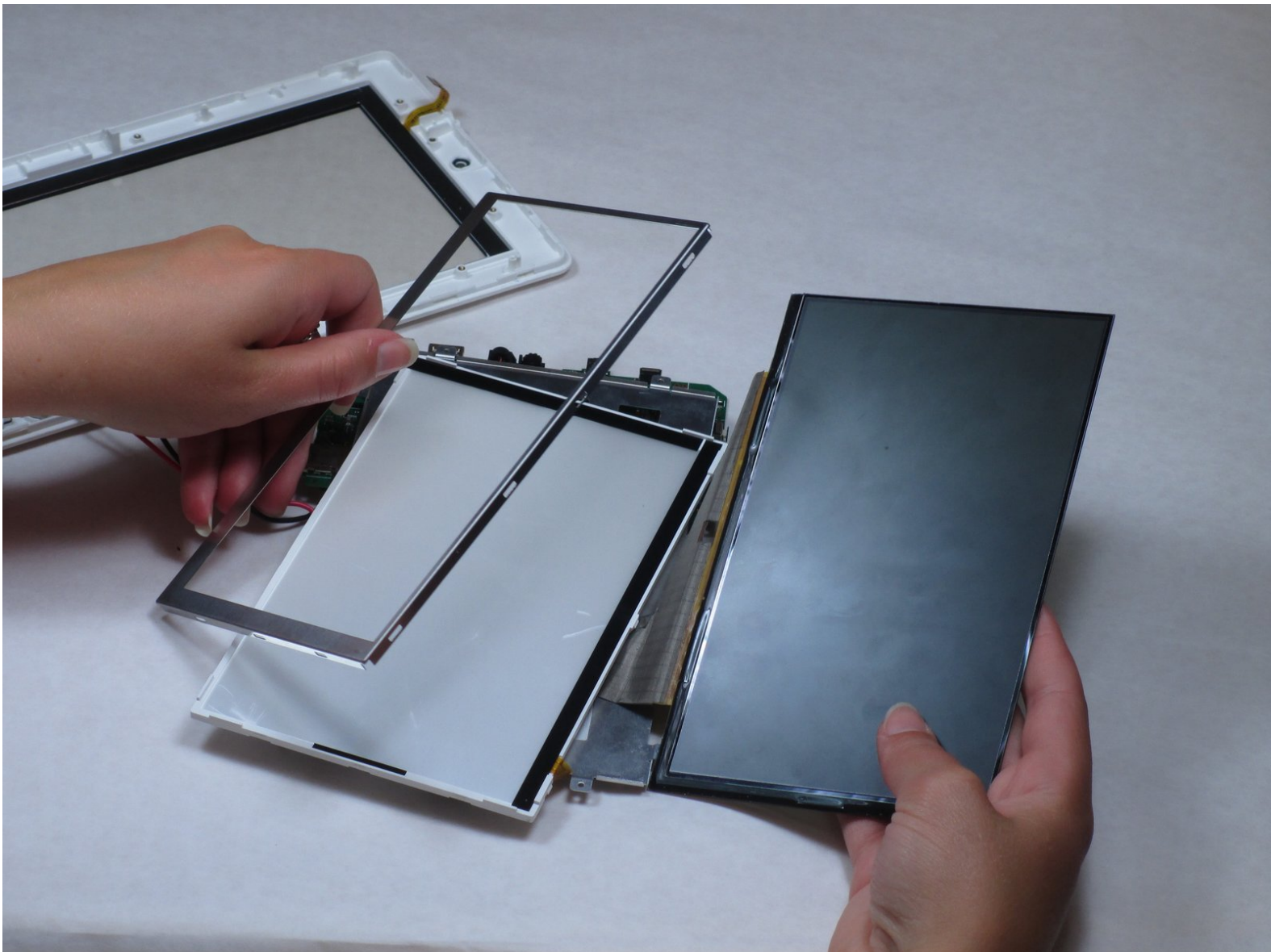




Creative Ziio 7" LCD Screen Replacement

This guide will show you how to replace the LCD screen on the Creative Ziio.

Written By: Kyle



INTRODUCTION

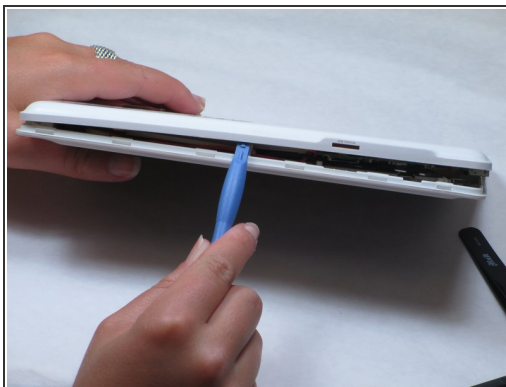
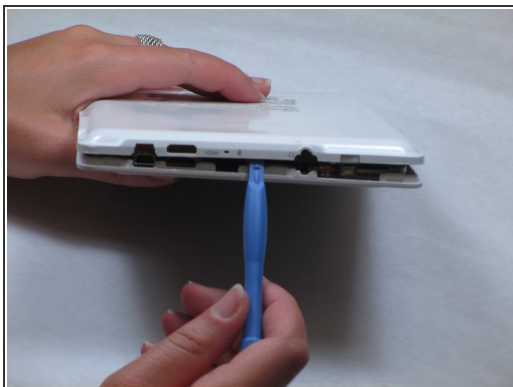
The Creative Ziio boasts excellent sound quality and usability. It uses a 7" LCD screen that cannot be replaced by a generic screen. Replacement screens may be provided by contacting Creative, depending on warranty details. Searching local tech stores or online tech supply sites may be helpful as well.



TOOLS:

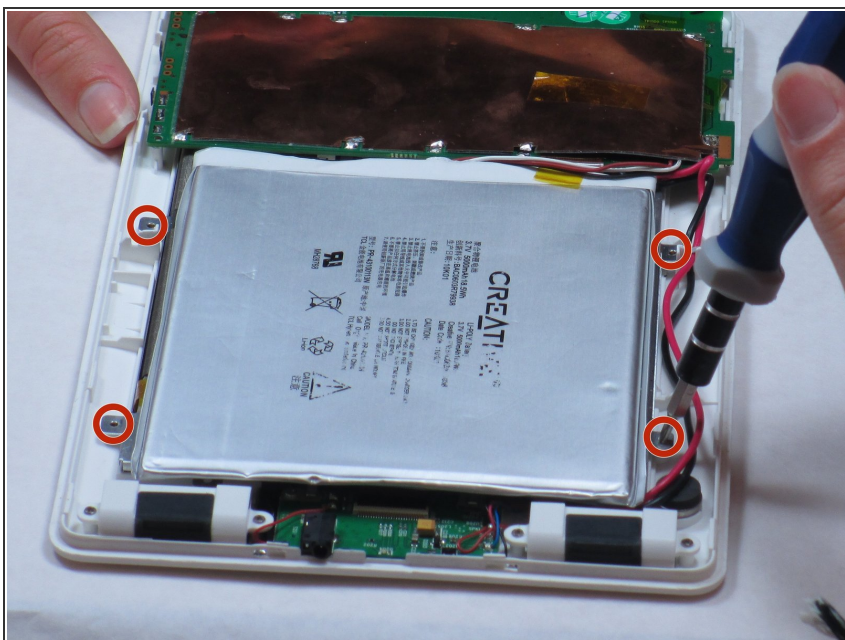
- [iFixit Opening Tools](#) (1)
 - [Tweezers](#) (1)
 - [Phillips #00 Screwdriver](#) (1)
-

Step 1 — Back Panel



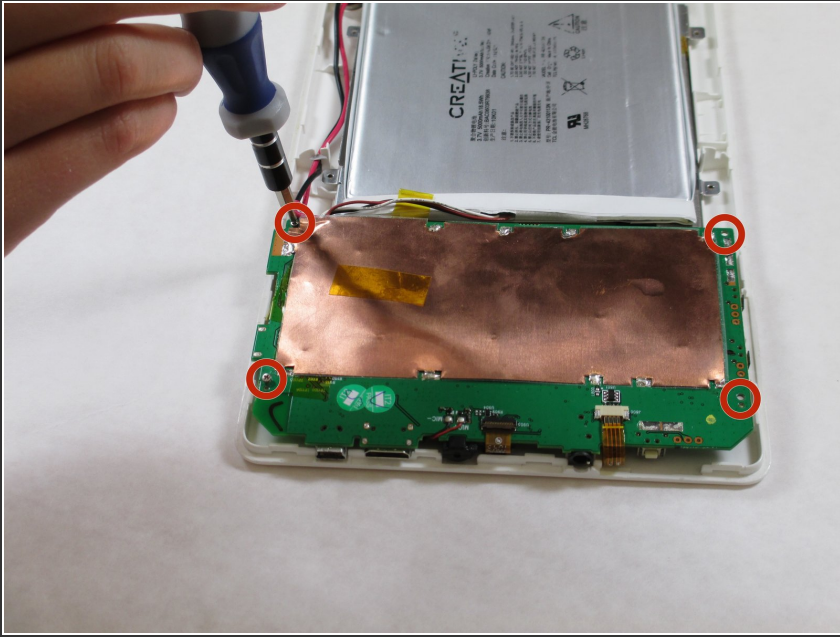
- Remove the back panel by using the plastic opening tool to carefully pry around the panel's edges.
⚠ The volume control button and the top power button may fall out during this step.

Step 2 — LCD Screen



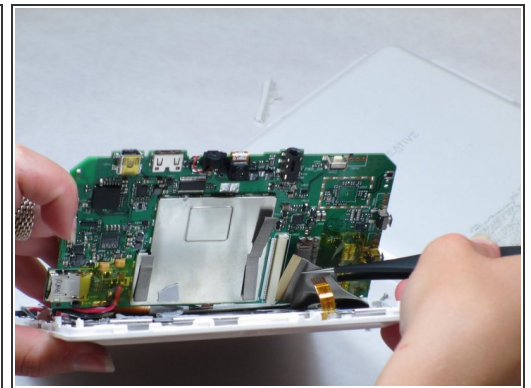
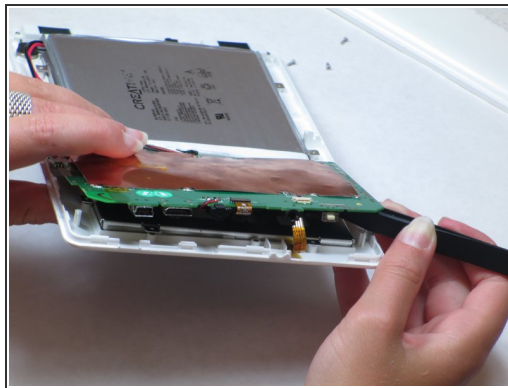
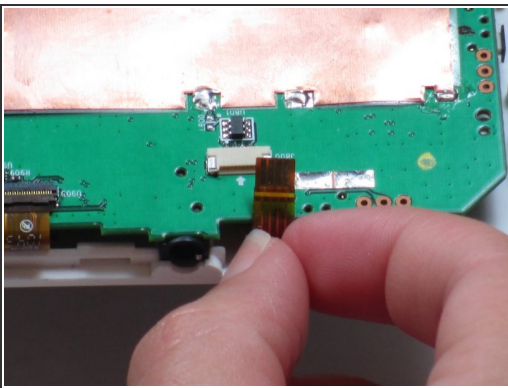
- Remove the four 3mm Philips #00 screws around the large silver battery.

Step 3



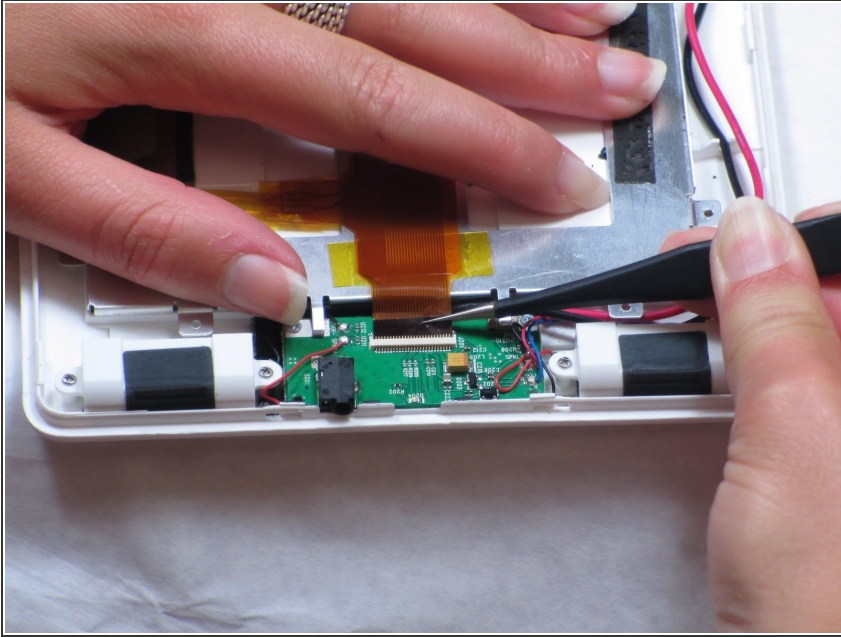
- Remove the four 4mm Philips #00 screws on the edges of the circuit board.

Step 4



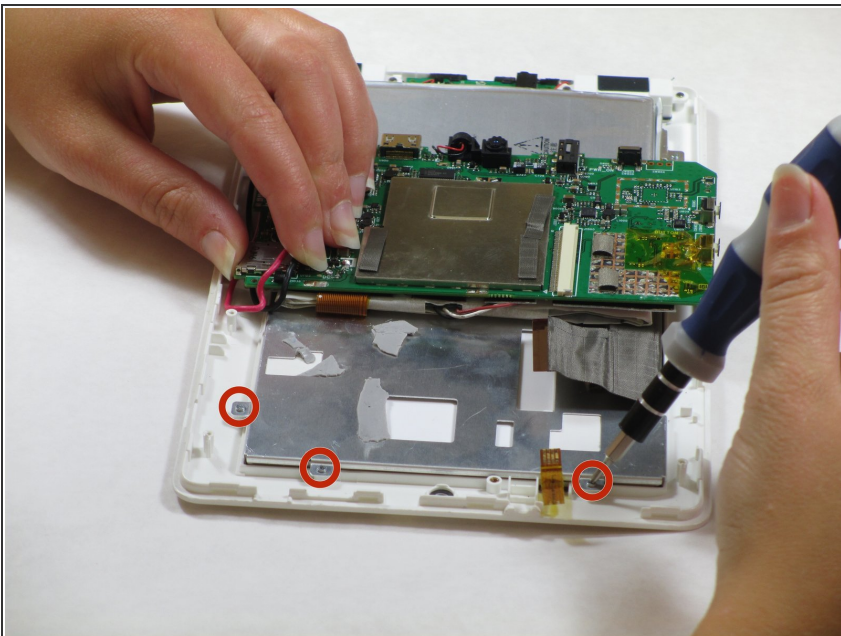
- Remove the ribbon cable from the exposed side of circuit board near the headphone jack.
- Carefully lift up the circuit board on the detached side.
- ⚠ There is another ribbon cable attached to the underside of the circuit board.
- Disconnect the second ribbon cable by pulling the end of the ribbon from its housing on the circuit board with tweezers.
- ⓘ The circuit board is extremely delicate. Move carefully and don't rush on this step!

Step 5



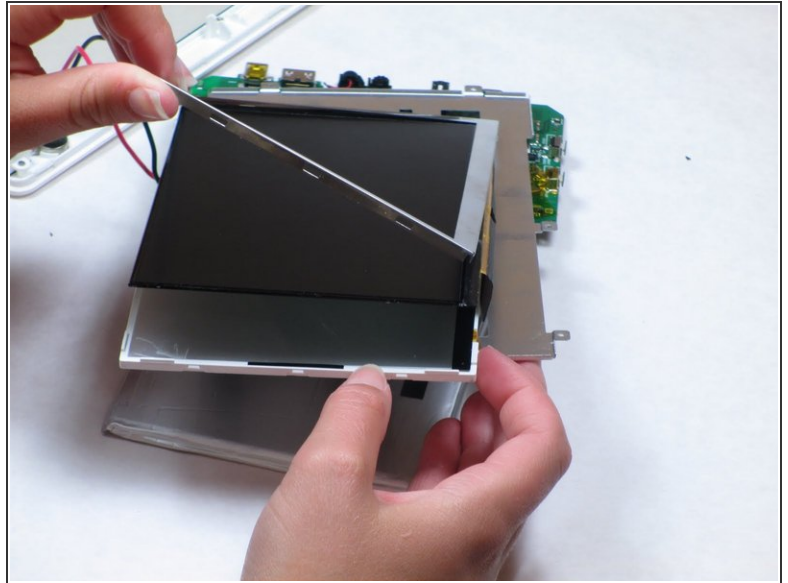
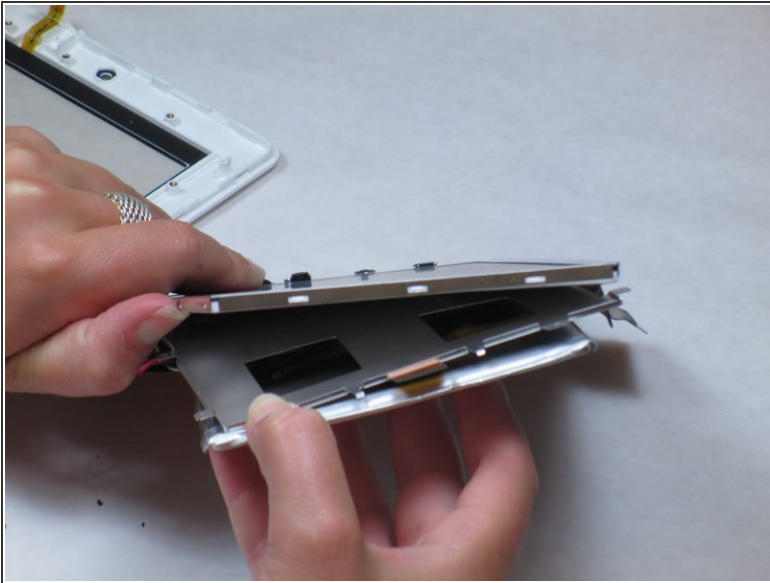
- On the opposite end of the device:
Remove the ribbon cable in between
the speakers at the end of the
battery.

Step 6




- There are three additional 3mm
Philips #00 screws underneath the
circuit board that need to be
removed.
- Now, remove the battery and circuit
board with the LCD attached and
turn it over so the screen is facing
upwards.

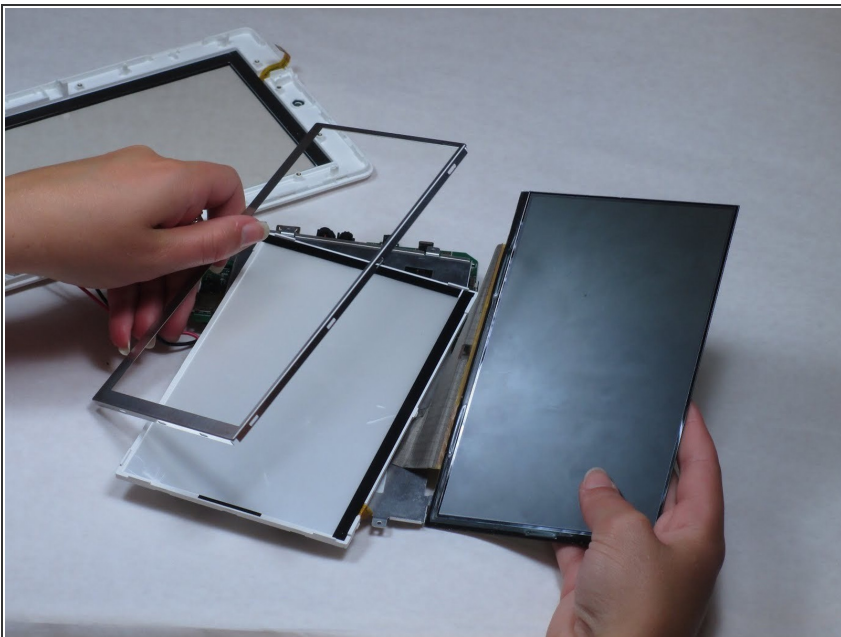
Step 7



- Carefully pry the thin, metal frame from around the LCD screen.

 The frame is extremely thin! Take your time when removing it to avoid bending or deforming it.

Step 8



- Carefully remove the black LCD screen.

To reassemble your device, follow these instructions in reverse order.

This document was generated on 2021-05-15 09:50:22 AM (MST).

