



How To Use Screen Vise Clamps

Screen Vise Clamps are adjustable clamps used...

Written By: Carsten Frauenheim



INTRODUCTION

[Screen Vise Clamps](#) are adjustable clamps used around the perimeter of phone, tablet, and smartwatch screens or back panels to set replacement adhesive after a repair.

Follow these basic instructions to properly use your clamps without damaging your device.

Caution: Don't use vise clamps to forcibly close a bulging device! Your battery might be swollen—if it is, [take appropriate precautions](#).




For detailed instructions specific to your device and repair, see our [repair guides](#).

TOOLS:

[Screen Vise Clamps 6-Pack](#) (1)

Step 1 — Fit your device into a clamp



-  In order for the adhesive to bond correctly, you'll need to apply even pressure around the perimeter of your device.
-  **Do not use vise clamps to forcibly close a bulging device.**
-  Before beginning this repair, we recommend cleaning your device to avoid catching debris between the vise jaws and the device.
- Open a [screen vise clamp](#) and slide it over the edge of your device, as far as it will go.

Step 2



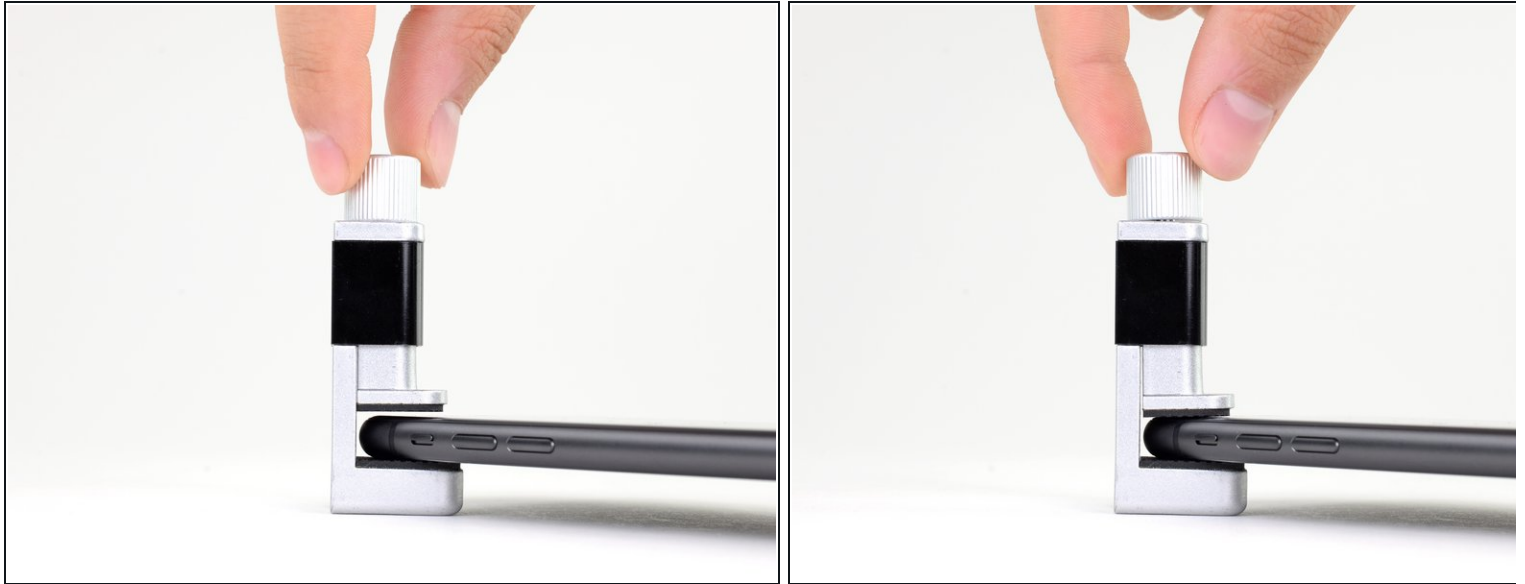
- ① If your device has a camera bump and the clamp is able to sit squarely over the center of a lens, you only need to use one clamp for the camera bump.
- ① If the clamp is **not** able to sit squarely over the center of a lens, use two clamps spaced evenly over the camera bump.

Step 3



- ⓘ For watches, place clamps near the edges, and make sure the jaws press down **flat** on the display and not at an angle.

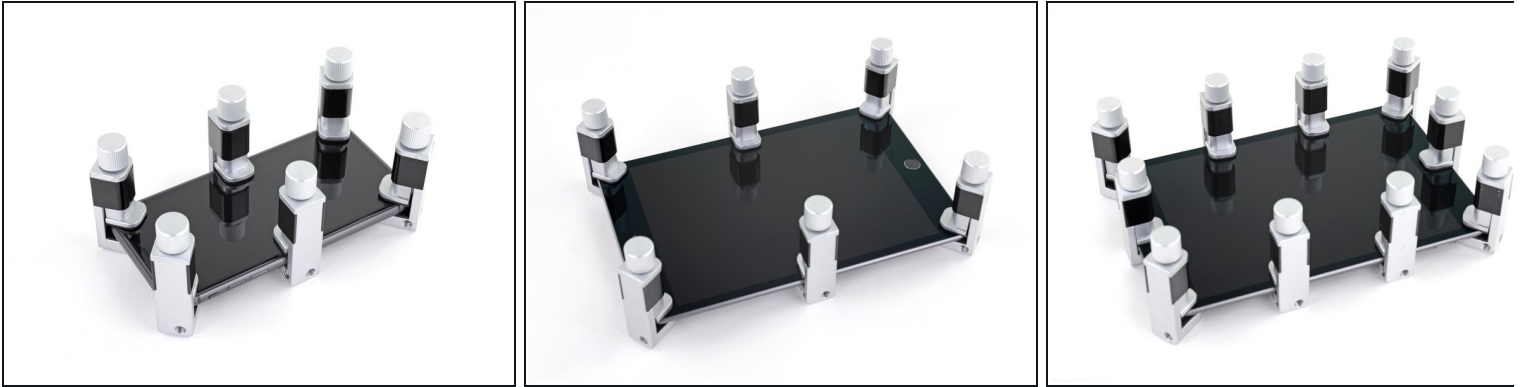
Step 4 — Lightly secure the clamp



⚠ Over-tightening may damage your device's screen or back cover.

- Spin the vise clamp knob clockwise to lower the upper jaw onto the screen.
 - Spin the knob until the jaw makes light contact with the screen, and then tighten down **one half turn**.
- i** The clamp isn't meant to be very tight just yet.

Step 5



- Repeat the previous steps for the five remaining vise clamps: one at each of the four corners, and one in the middle of each long edge.
 - ❗ For larger tablets, more than six vise clamps may be needed to ensure the adhesive bonds evenly around the entire perimeter.
- Using a hair dryer or heat gun, evenly heat the edges all the way around the device until they are slightly too hot to touch. The heat will help the adhesive form a more complete bond.
 - ⚠ Don't overheat the device, or you may cause the battery to ignite or damage other heat-sensitive components, like the display.
- While the device is still hot, tighten all six vise clamps down **one full turn**.
 - ⚠ Don't tighten any further to avoid damaging your device.
- Leave the vise clamps in place for about **thirty minutes**.