



# Dell Latitude E6400 Hard Drive Replacement

Written By: Aaron Thomas





## TOOLS:

- [Phillips #0 Screwdriver](#) (1)



## PARTS:

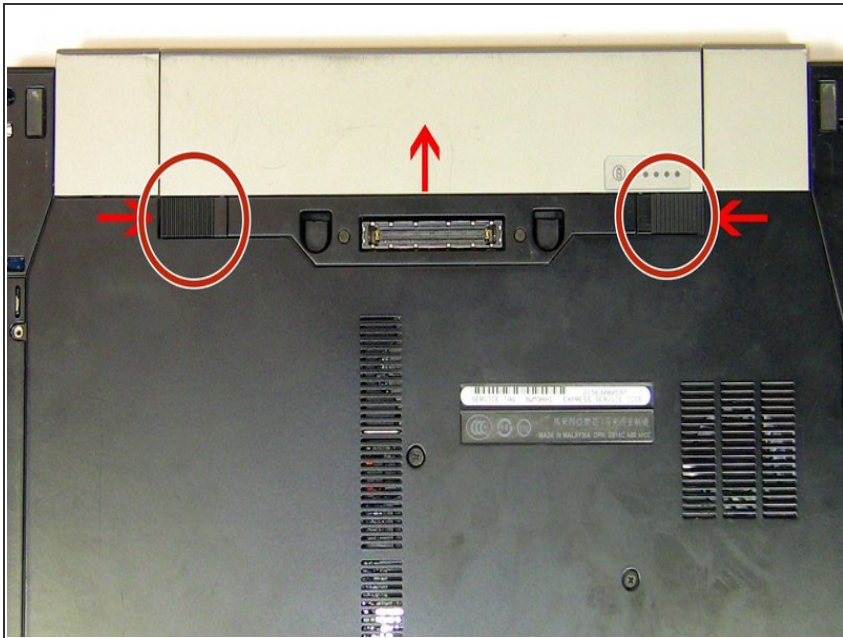
- [Crucial MX500 1 TB SSD](#) (1)
- [Crucial MX500 250 GB SSD](#) (1)
- [Crucial MX500 500 GB SSD](#) (1)
- [Crucial MX500 2 TB SSD](#) (1)

## Step 1 — Battery



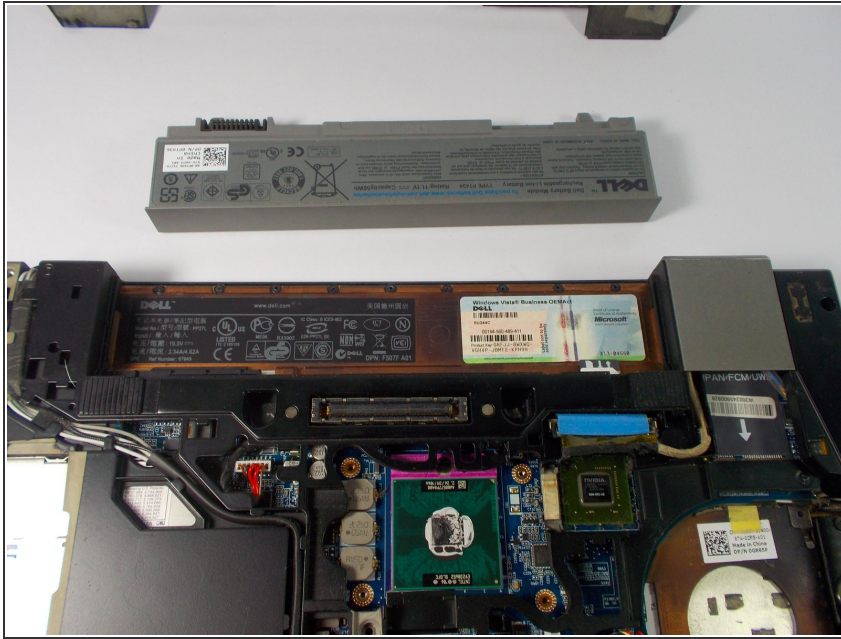
- First, turn off your laptop and disconnect any external adapter.

## Step 2



- Release the latch or latches connected to the battery that hold it in place.

### Step 3



- Remove the old battery from its storage bay.

### Step 4



- Plug in the external AC adapter to fully charge the new battery.

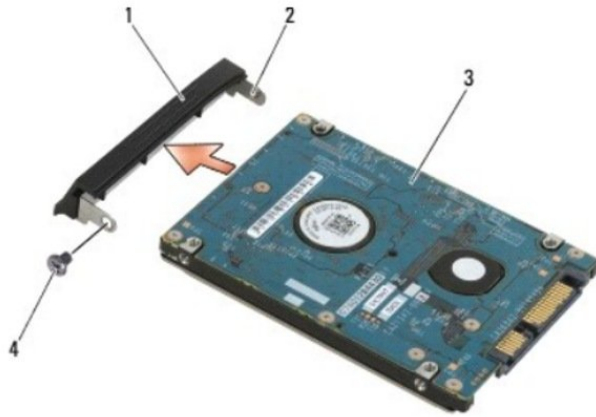
## Step 5 — Remove the hard drive



1	hard drive	2	bottom of base assembly
3	M3 x 3-mm screws (2)		

- After removing the battery, locate and remove the two M3 x 3-mm screws securing the hard drive to the base assembly. Then, slide the hard drive from the base assembly.

## Step 6 — Remove the hard drive bezel



1	hard drive bezel	2	pin on bezel bracket
3	hard drive	4	M3 x 3-mm screw

- Next, remove the M3 x 3-mm screw on the hard drive bezel and remove the hard drive bezel. NOTE: Be mindful not to touch the components of the drive. Doing so could damage the drive.

With your replacement hard drive, reassemble your device by performing the instructions above in reverse order.