



Dell Latitude E5410 Hard Drive Replacement

A guide on how to remove and replace a hard drive for a Dell Latitude E5410 device.

Written By: Aaron Thomas



**TOOLS:**

- [Phillips #0 Screwdriver](#) (1)

**PARTS:**

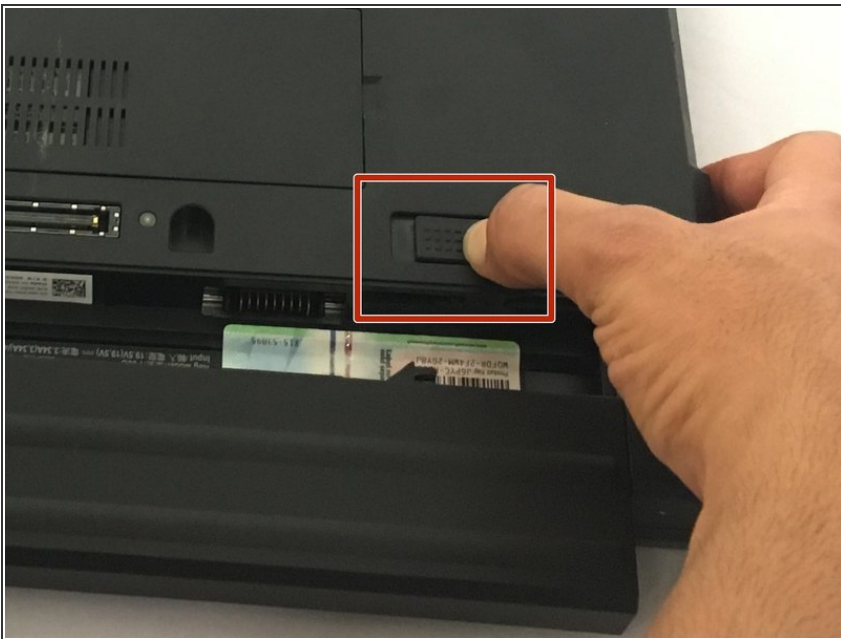
- [Replacement Hard Drive for Latitude E5410](#) (1)

Step 1 — Battery Replacement



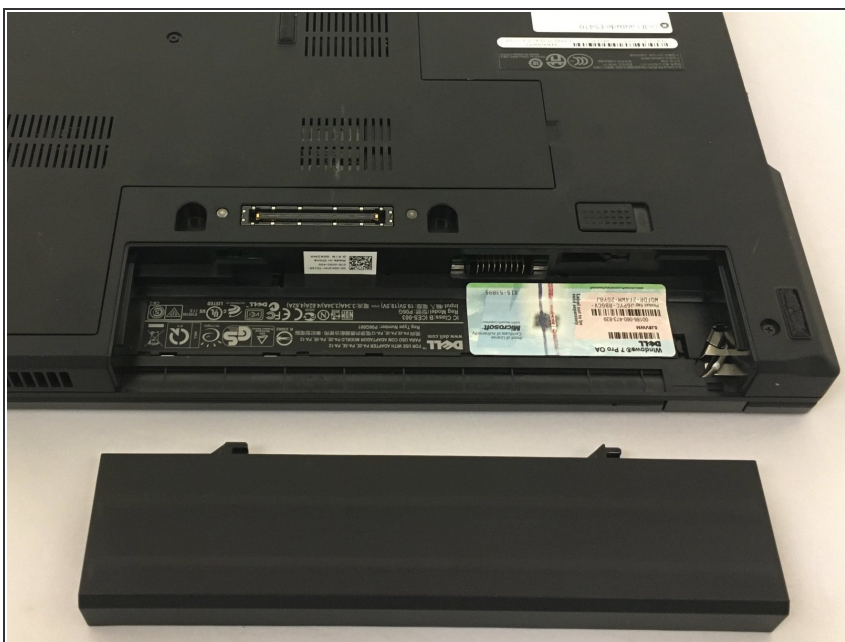
- Have your Dell Latitude E5410 unit ready face down.

Step 2



- Use your thumb to move the tab to the right that releases the battery, while using your other hand to slide the battery out.
- The battery will come out straight toward you.

Step 3



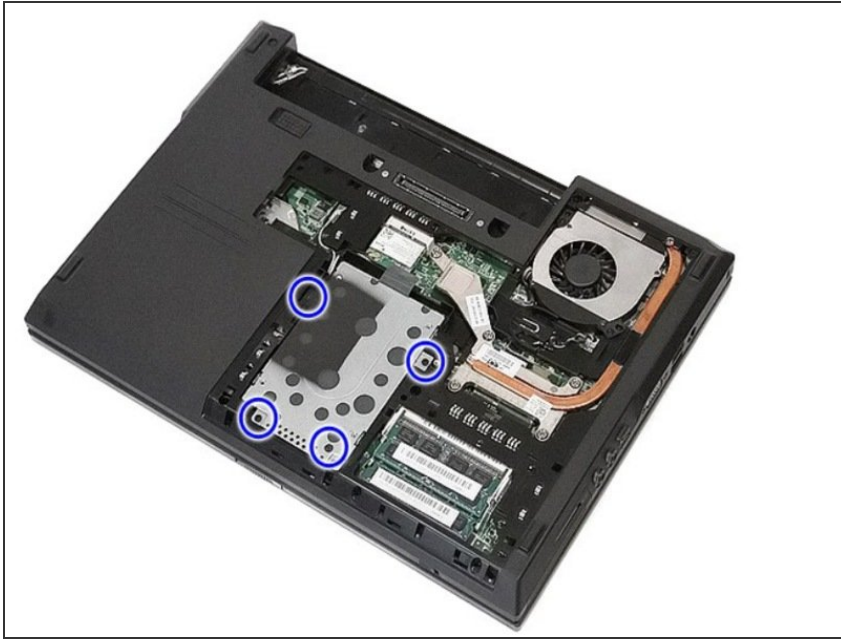
- Have your replacement battery ready to slide in.

Step 4 — Remove the access panel



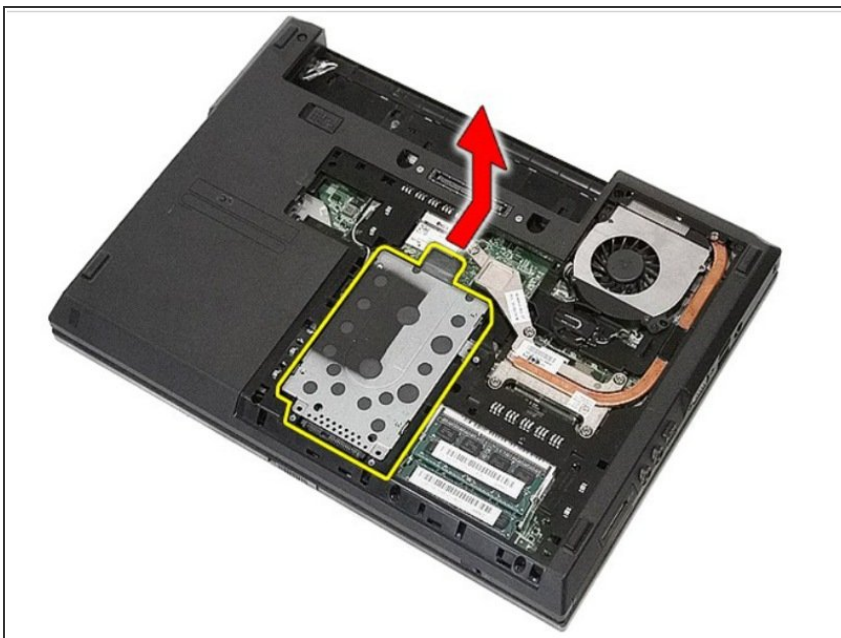
- After removing the battery., loosen the screw(s) that secures the access panel to the computer, then that secures the access panel to the computer.

Step 5 — Locate screws.



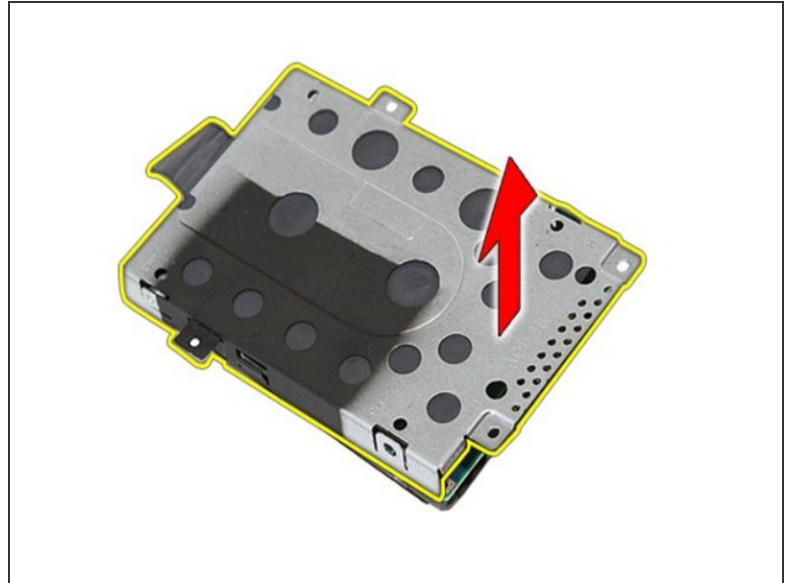
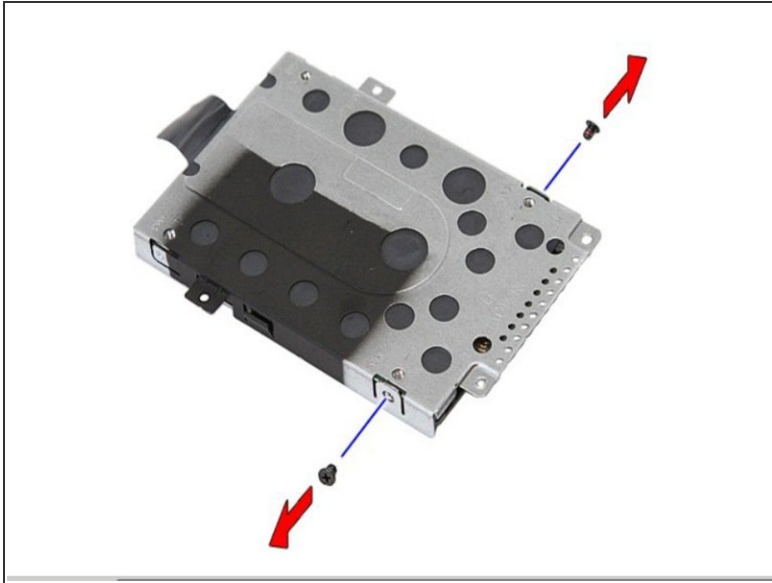
- Locate and move the screws securing the hard drive to the computer.

Step 6 — Remove hard drive from computer



- Slide the hard drive towards the center of the computer and remove.

Step 7 — Remove hard drive caddy



- Remove the screws securing the hard drive caddy to the hard drive. Then, lift up the hard drive caddy at an angle from the hard drive and remove.

With your replacement hard drive , reassemble your device by performing these instructions in reverse order.