




# Dell Latitude D620 Coin Cell Battery Replacement

This is a guide on how to replace the coin-cell battery for the DELL Latitude D620.

Written By: Hezekiah Brown

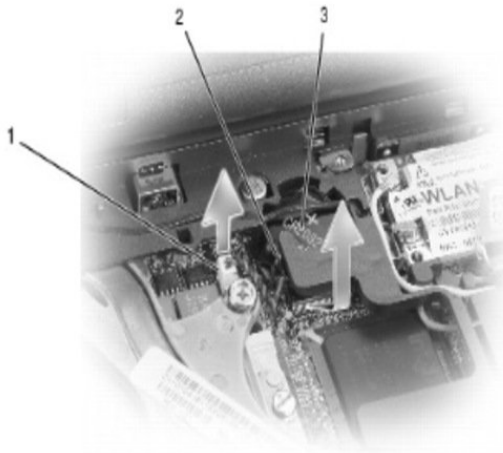
## Step 1 — Remove hinge cover and keyboard.



 Shut down your computer. Disconnect all power sources before opening the computer cover or panels.

- Remove the hinge cover and keyboard.

## Step 2 — Remove coin-cell battery connector from system board connector.



- Remove the coin-cell battery connector from the connector on the system board.

1	coin-cell battery connector	2	plastic mylar	3	coin-cell battery
---	-----------------------------	---	---------------	---	-------------------

### Step 3 — Raise corner of plastic mylar; pull battery out of compartment.



- Being careful not to break the plastic, slightly raise the corner of the plastic mylar above the battery.
- While holding the mylar, grasp the battery and pull out of the battery compartment.
- Read the conclusion below.

To reassemble your device, follow these instructions in reverse order.