



Lenovo Yoga 900-13ISK Keyboard Replacement

This step-by-step repair guide will show you...

Written By: Austin Blakely



INTRODUCTION

This step-by-step repair guide will show you how to replace the keyboard in the 13 inch Lenovo Yoga 900. Whether you have a malfunctioning key or the whole keyboard has ceased to work, replacing your keyboard will get you back to typing. Fortunately, the keyboard in the Yoga 900-13ISK is modular, so you can replace it without needing to replace the entire palm rest.

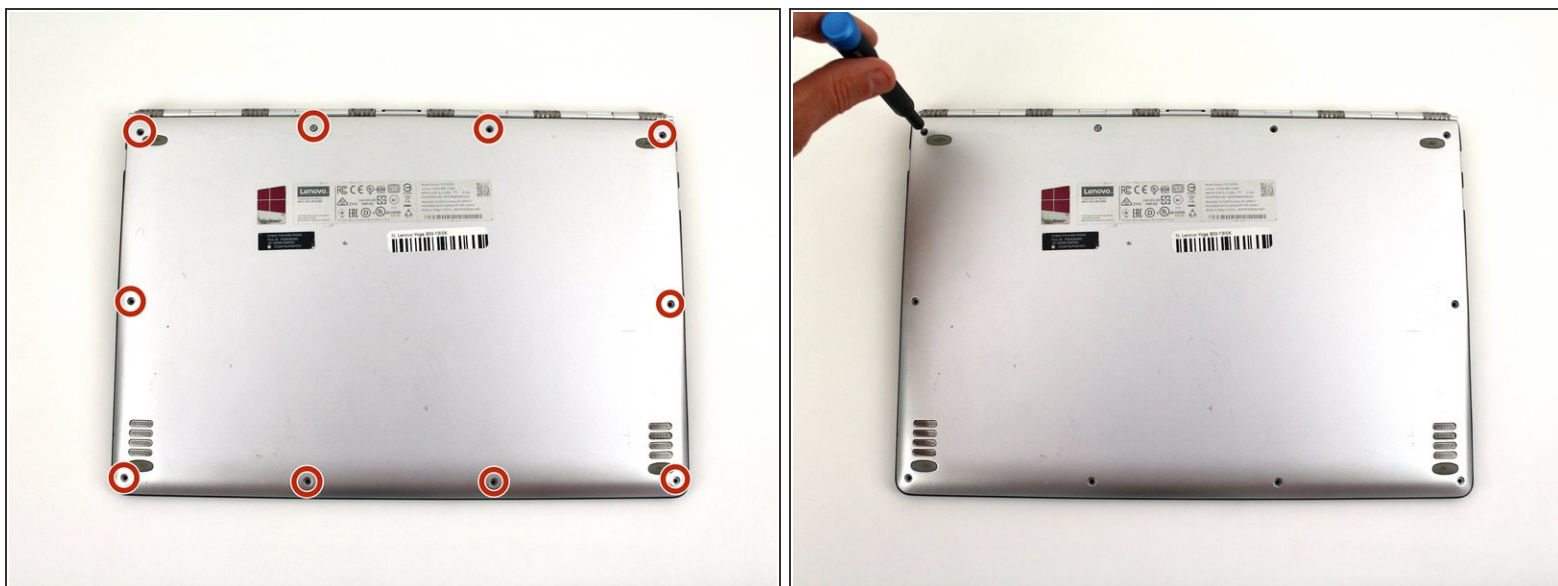
Be sure to unplug and completely turn off your device before you start working.



TOOLS:

- [T5 Torx Screwdriver](#) (1)
 - [Spudger](#) (1)
 - [Phillips #00 Screwdriver](#) (1)
 - [ESD Safe Tweezers Blunt Nose](#) (1)
 - [Phillips #000 Screwdriver](#) (1)
-

Step 1 — Back Cover



- Using a T5 Torx screwdriver, remove the ten 5.5 mm screws from the back case of the laptop.

Step 2



- Use a spudger to pry open the back case at the hinges of the laptop.
 - ❗ There are plastic clips around the perimeter of the case holding down the back cover. These will need to be popped off as the cover is removed.
- Use your fingers to completely pop off the back cover.

Step 3 — Battery



- Remove the five 3.6 mm screws from the battery with a Phillips #00 screwdriver.

Step 4



- Grab the bottom corners of the battery and gently pull the battery until the cable disconnects from the connector on the motherboard.

- ☑ While reassembling, use a plastic spudger to push the battery cable into the connector on the underside of the motherboard. This will be easier to do before the screws are replaced.

Step 5 — Solid State Drive



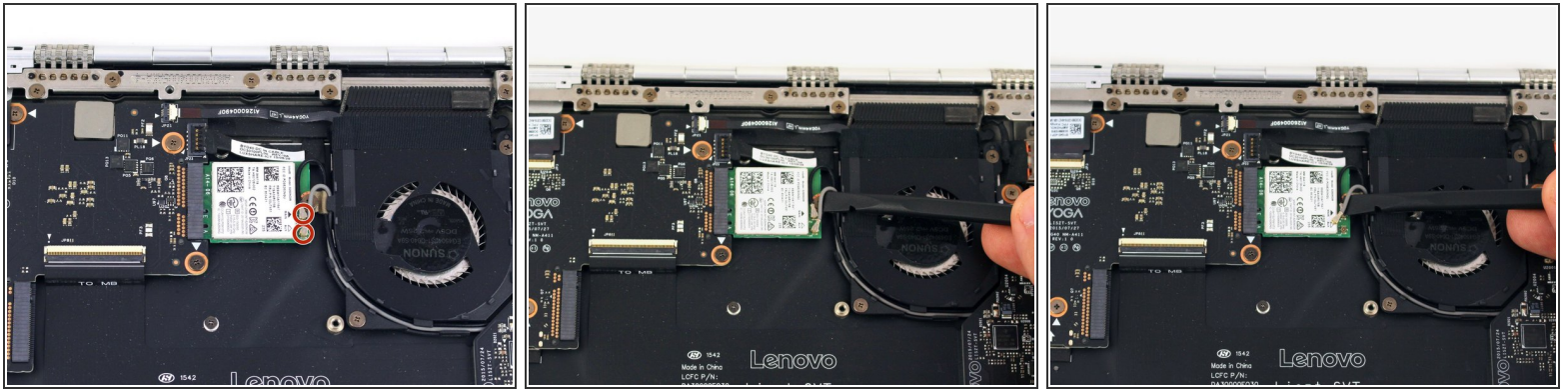
- Use a Phillips #00 screwdriver to remove the 2.7 mm screw that is holding down the SSD card.

Step 6



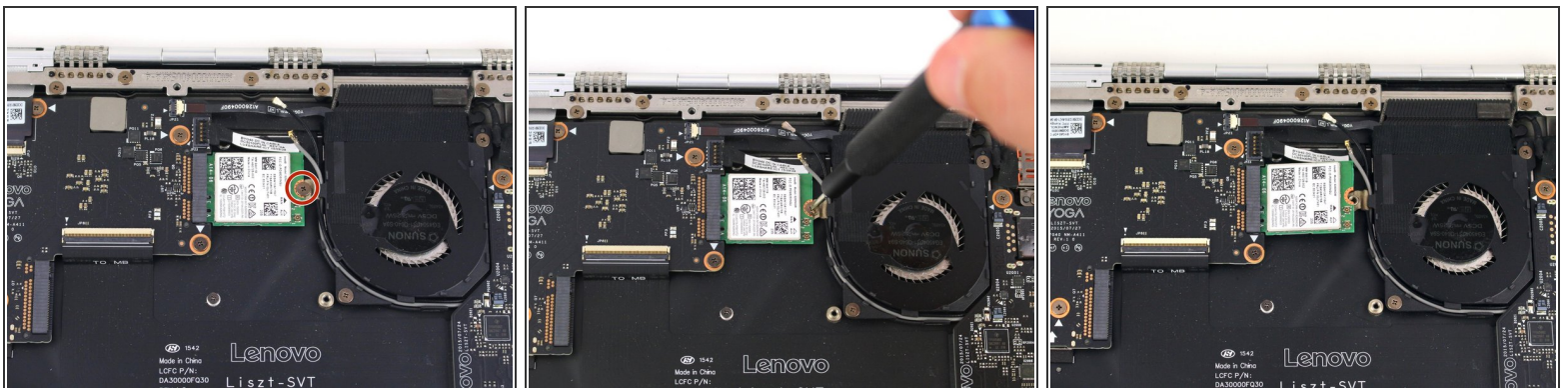
- Pull the SSD card out of the port to the right.

Step 7 — Wi-Fi Card Prereq



- Pry up the gray and black coaxial cables from the Wi-Fi card using a spudger.
- Move the cables to the side.

Step 8



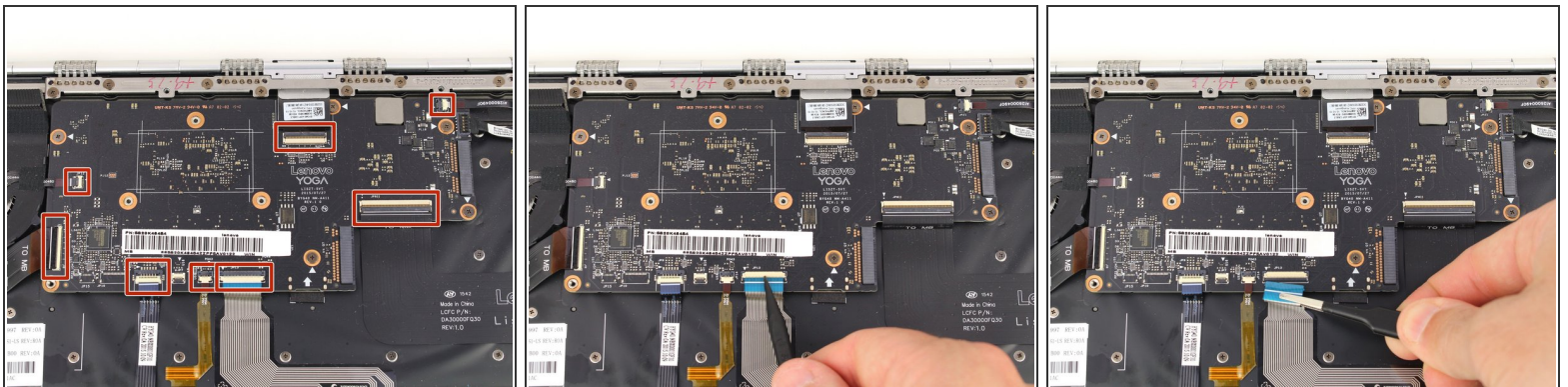
- Using a Phillips #00 screwdriver, remove the 2.2 mm screw holding down the Wi-Fi card.
- ⓘ The Wi-Fi card may pop up to rest at an angle to the motherboard after the screw is removed.

Step 9



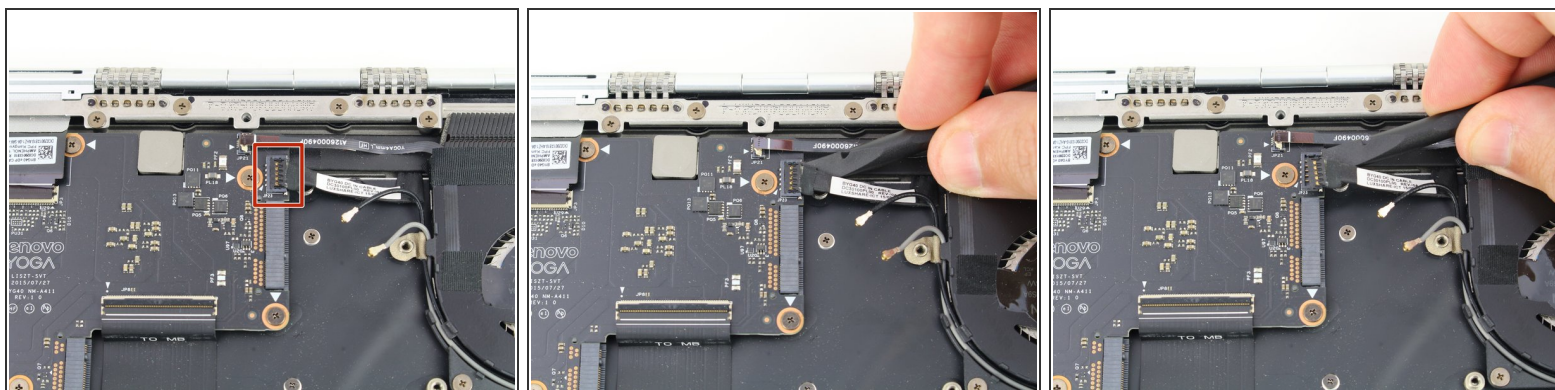
- Pull the WiFi card out from the connector on the motherboard.

Step 10 — Motherboard



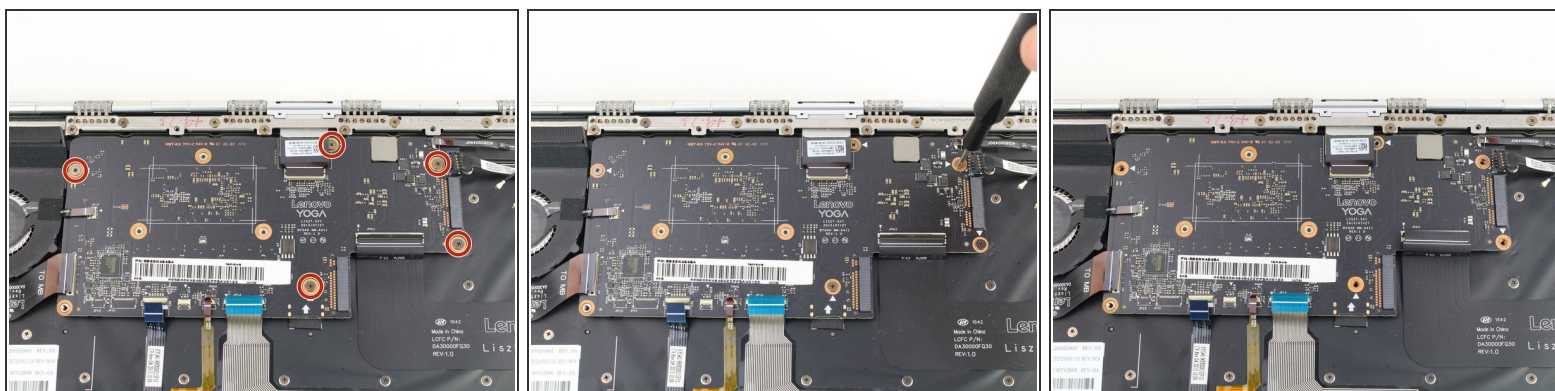
- Using the pointed end of a spudger, flip up the hinged locking tabs of the eight [ZIF connectors](#) on the motherboard.
- Pull the eight cables out from their connectors using a pair of blunt nose tweezers.

Step 11



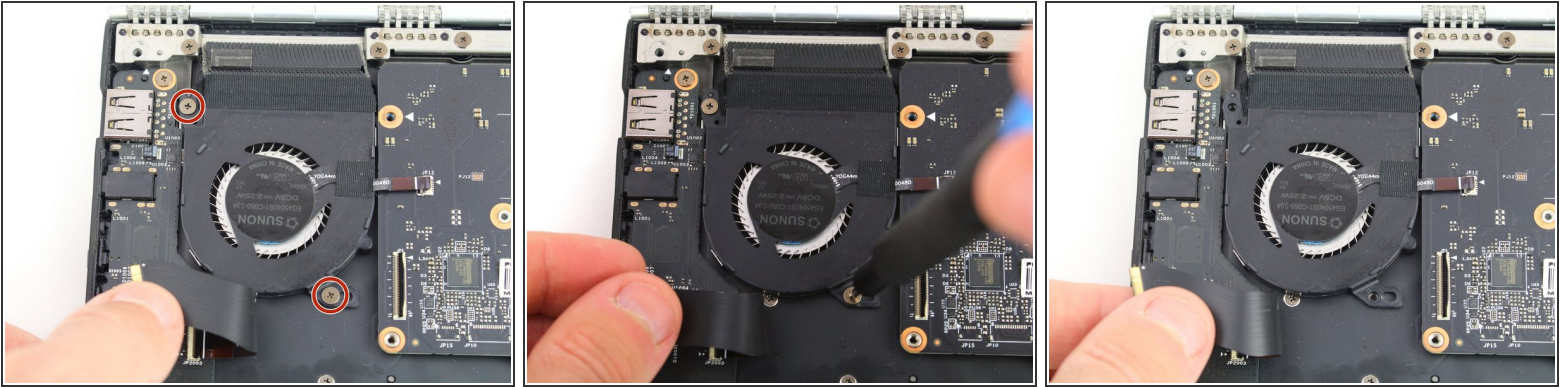
- Use a spudger to pry up the [press fit connector](#) on the right side of the motherboard.

Step 12



- Remove the five 3.6 mm screws from the motherboard using a Phillips #00 screwdriver.

Step 13



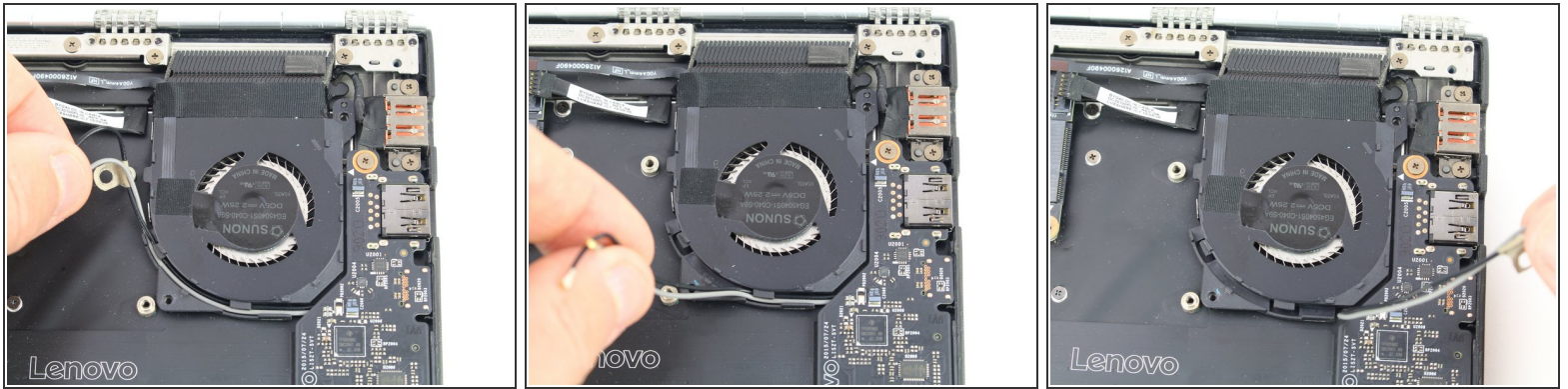
- Pull back the interconnect cable on the left side of the motherboard to reveal one of the fan screws for the left fan.
- Remove the two 3.6 mm screws from the left fan with a Phillips #00 screwdriver.

Step 14



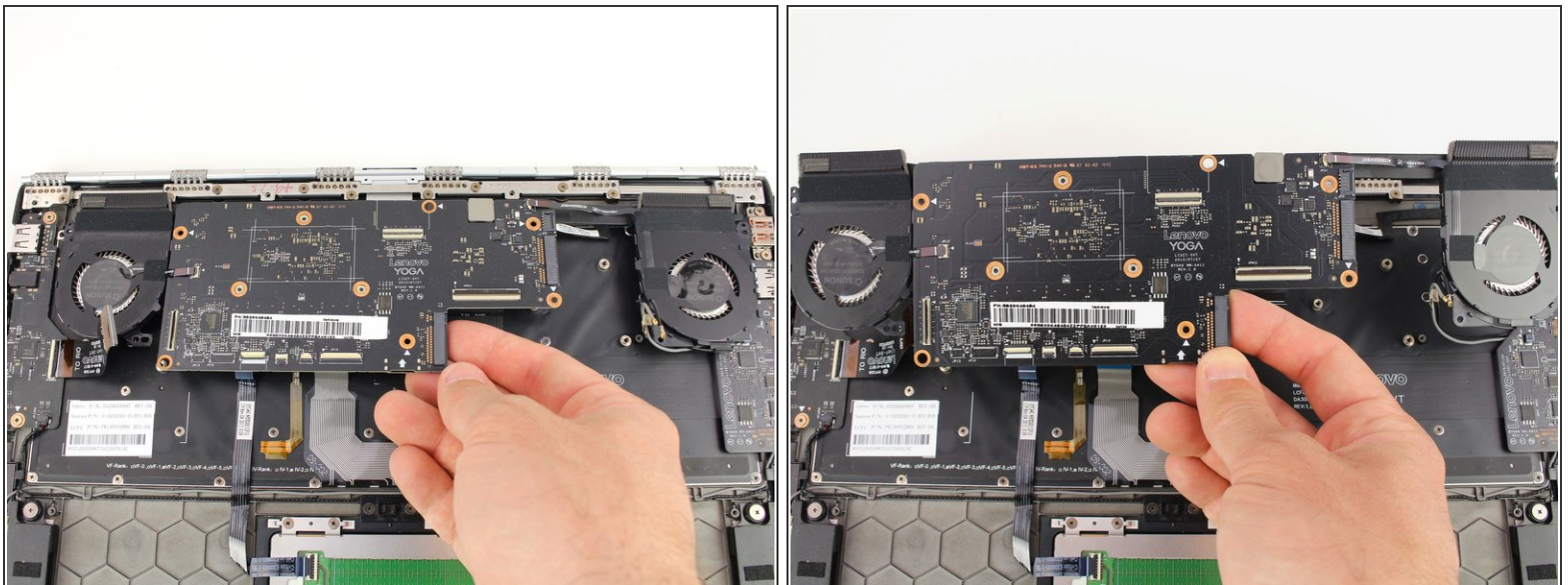
- Remove the two 3.6 mm screws from the right fan using a Phillips #00 screwdriver.

Step 15



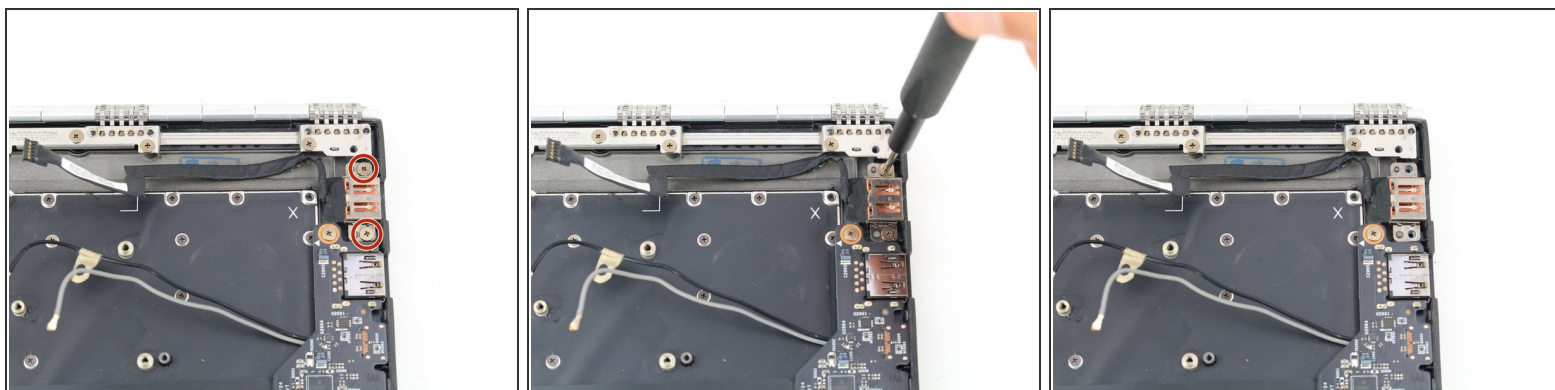
- Unwind the black and white coaxial cables from the hooks on the right fan casing.

Step 16



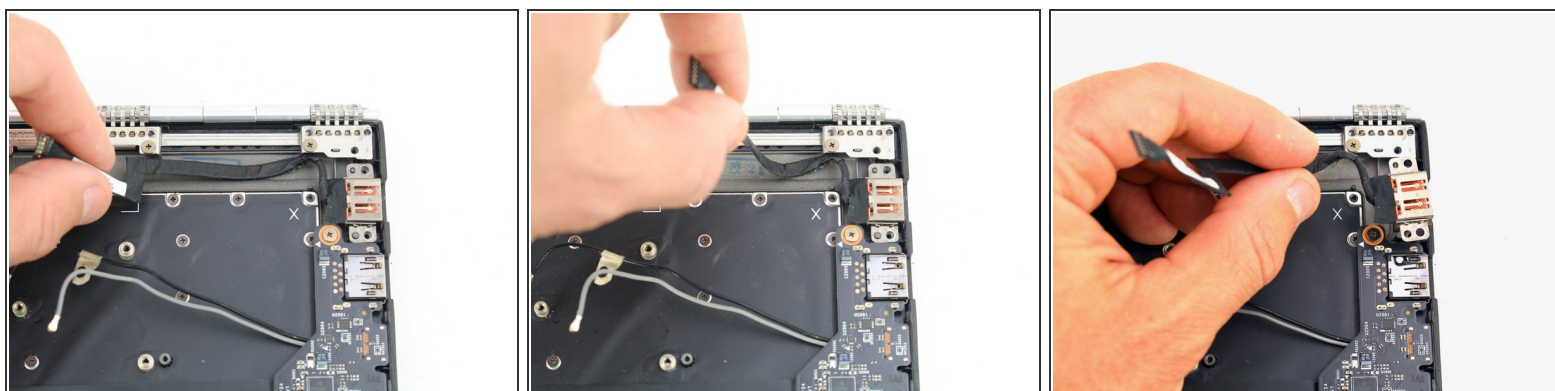
- Lift the motherboard from the bottom edge and pull it up and out of the case.
- i** If you need to remove the fan assembly to swap it over to your new motherboard, continue to follow along with the [heatsink guide](#).

Step 17 — Charging Port



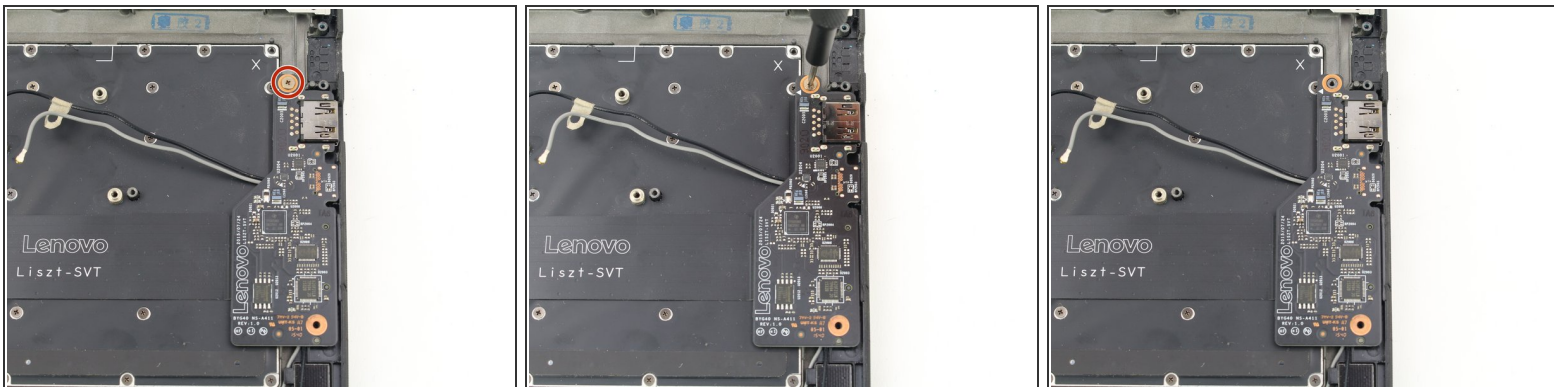
- Remove the two 3.5 mm screws from the charging port with a Phillips #00 screwdriver.

Step 18



- Peel up the charging port cable and remove the charging port.

Step 19 — Keyboard



- Remove the 3.6 mm screw from the daughterboard on the right with a Phillips #00 screwdriver.

Step 20



- Lift the daughterboard from the right edge and peel off the interconnect cable from the keyboard panel.

Step 21



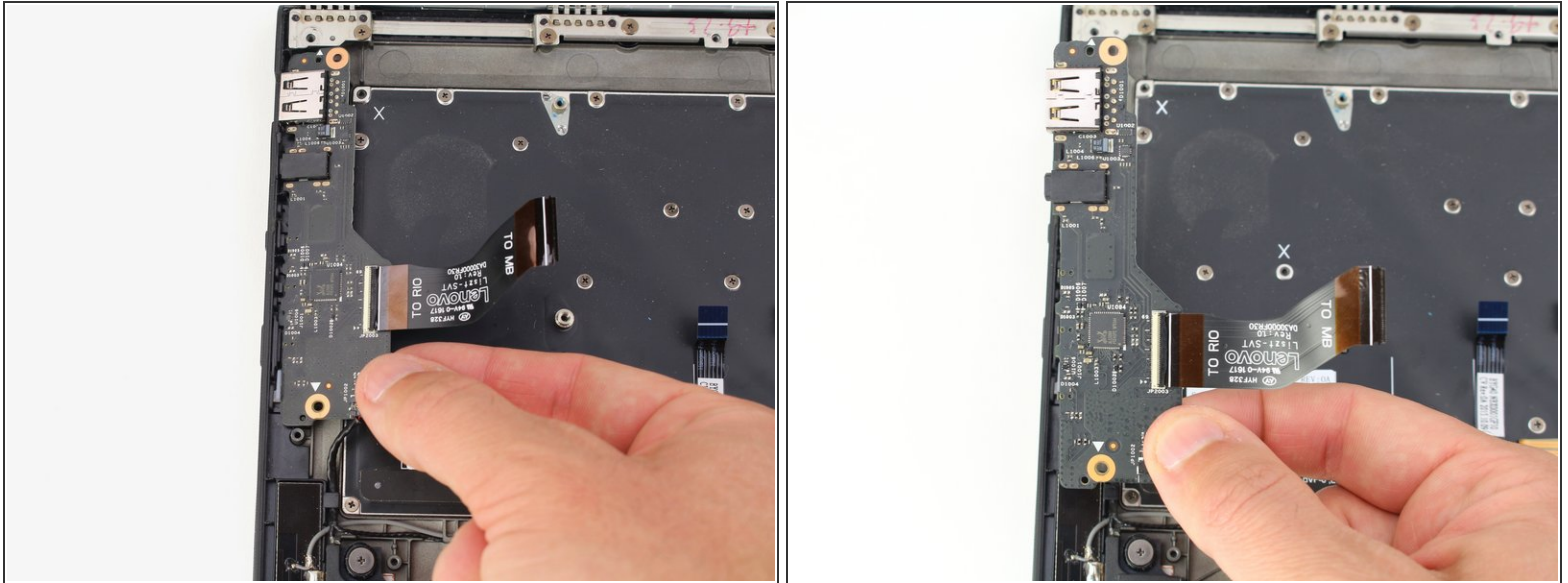
- Use a Phillips #00 screwdriver to remove the two 3.6 mm screws from the daughterboard on the left.

Step 22



- Use a pair of blunt nose tweezers to pull out the speaker cable on the lower portion of the daughterboard.

Step 23



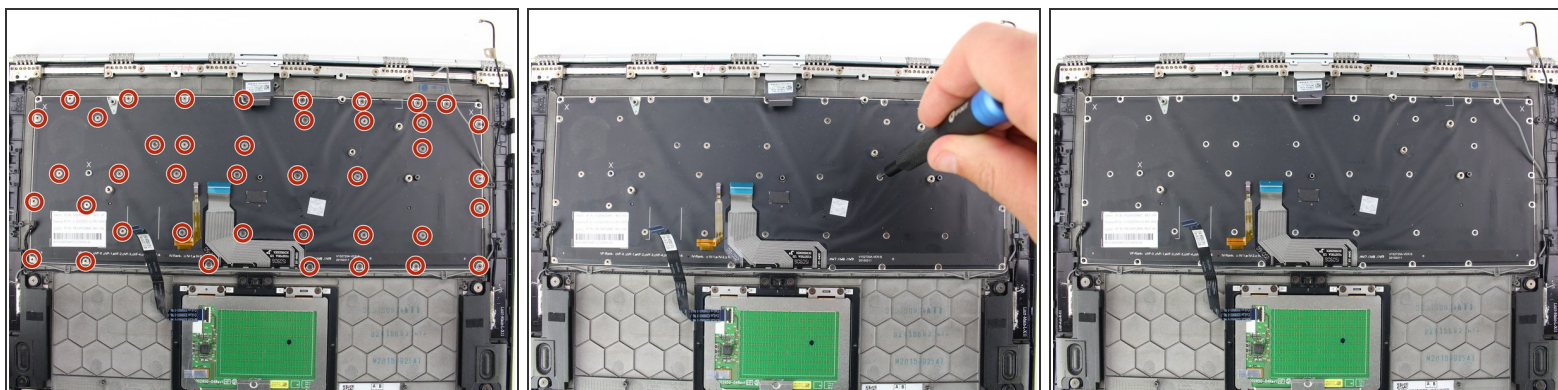
- Lift up the daughterboard from the right side to remove it from the case.

Step 24



- Peel back the trackpad cable from the black keyboard panel.

Step 25



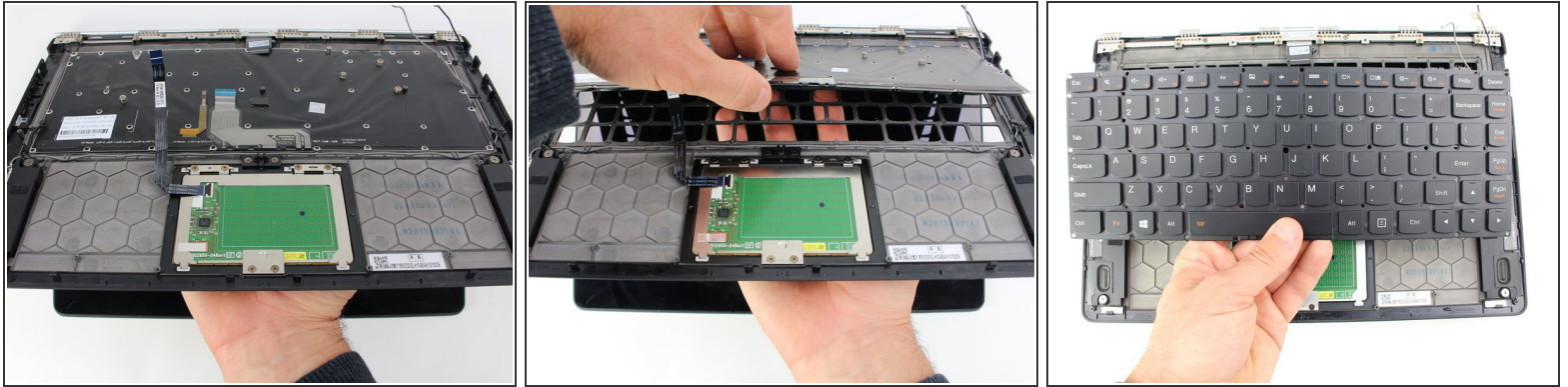
- Remove the forty-one 1.9 mm screws from the keyboard panel with a Phillips #000 screwdriver.
- ☑ While reassembling, you can use the 'X' markings to tell which holes do not need screws.

Step 26



- Open the laptop slightly.

Step 27



- Press the keyboard up from the underside and grab it to remove it from the case.

To reassemble your device, follow these instructions in reverse order.