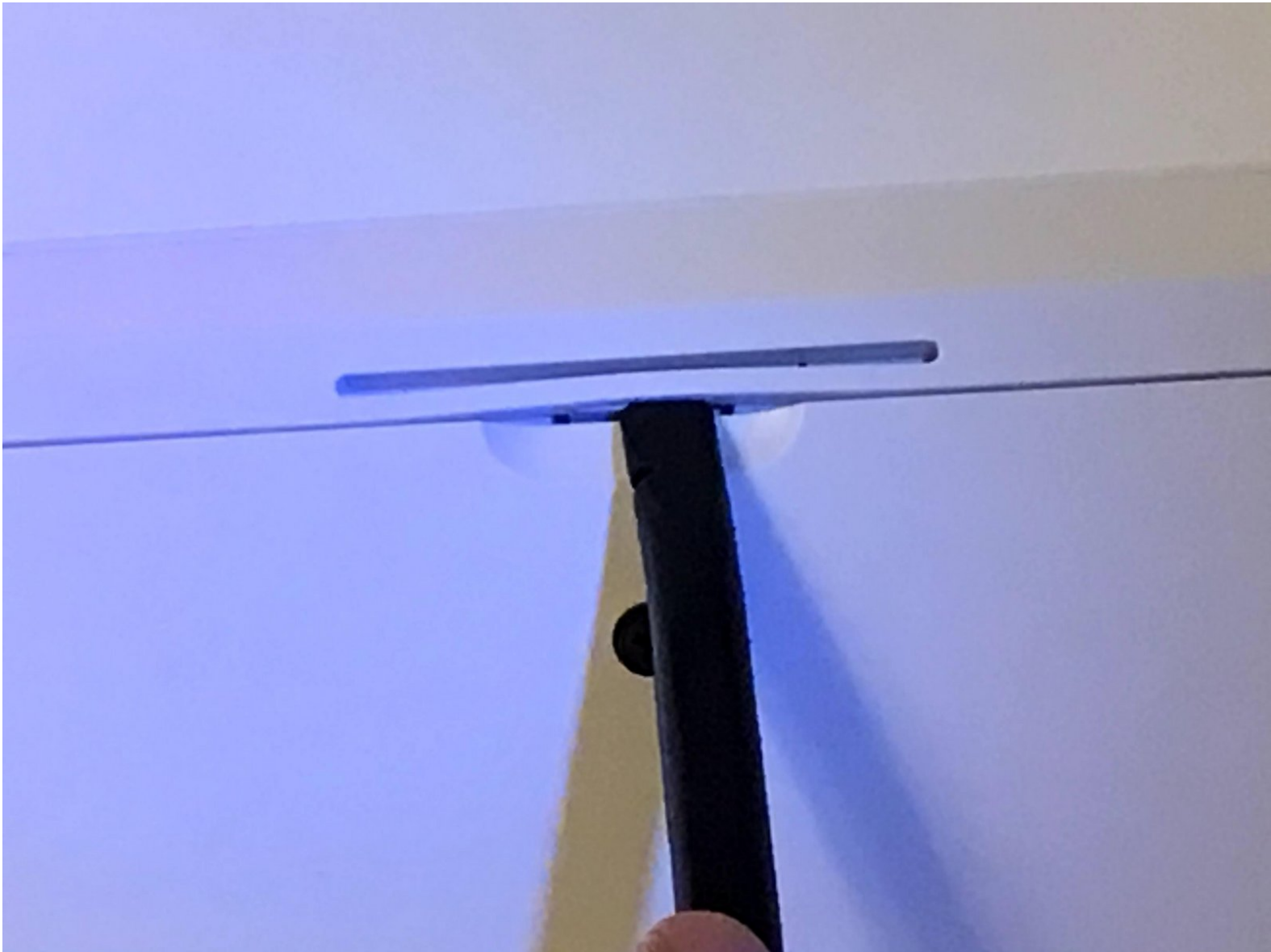




Logitech K850 Disassembly

The Logitech K850 is an ergonomic keyboard made by Logitech.

Written By: Marcus Jones

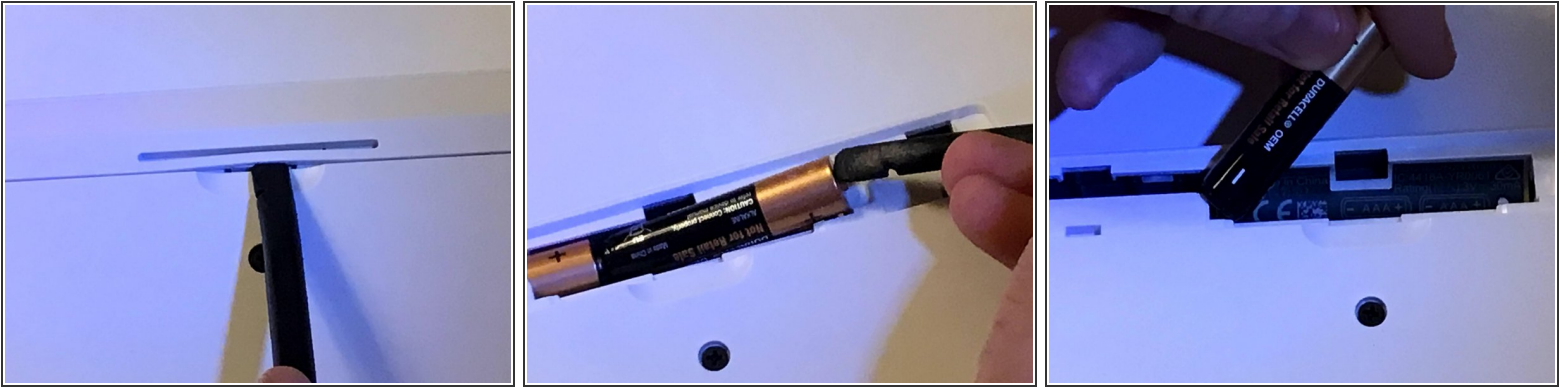




TOOLS:

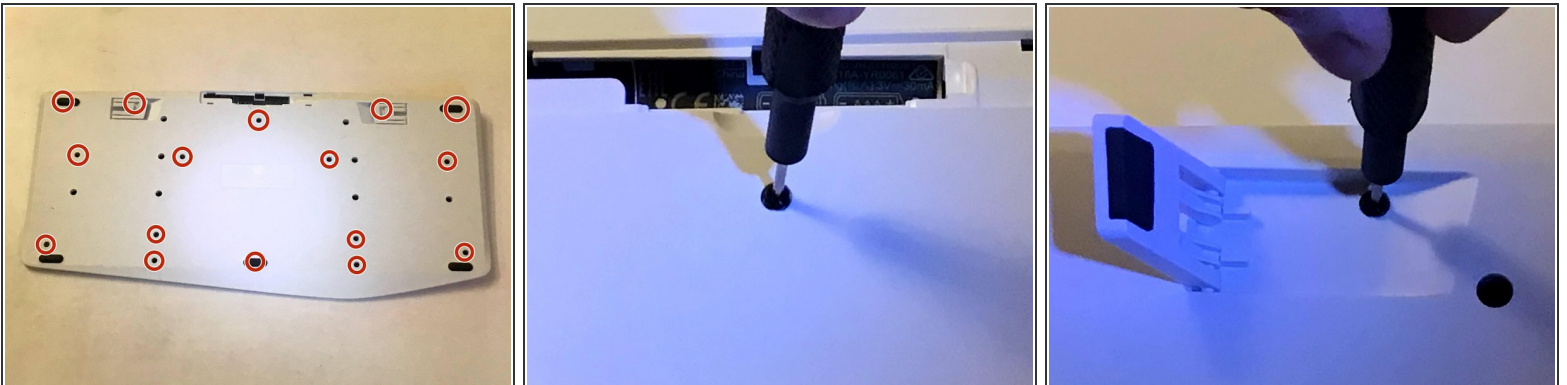
- [Spudger](#) (1)
- [Tweezers](#) (1)
- [Phillips PH000 Screwdriver](#) (1)

Step 1 — Removing Batteries



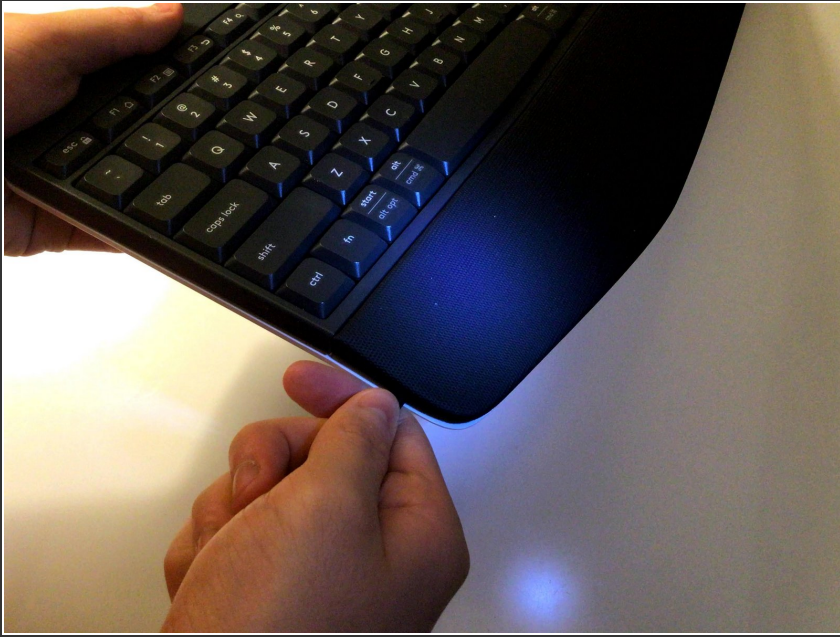
- Pry open the battery cover on the back of the device using either your hand or a spudger.
- Use a spudger to remove the first battery.
- Slide the 2nd battery out of the slot.

Step 2 — Unscrewing Screws



- Unscrew the highlighted red screws using a Phillips 000 screwdriver.
- i* Some screws are hidden under the rubber feet so you will have to pry off the rubber feet.
- i* There are 2 screws under the keyboard's kickstand.

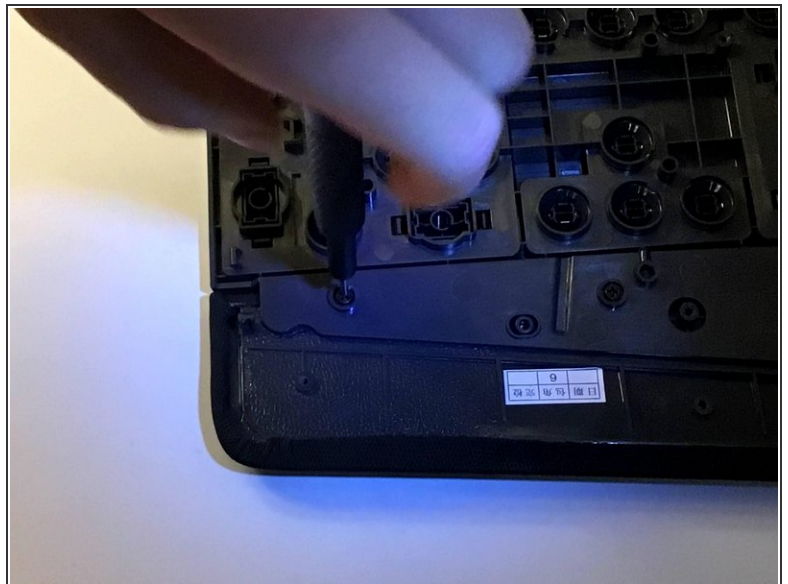
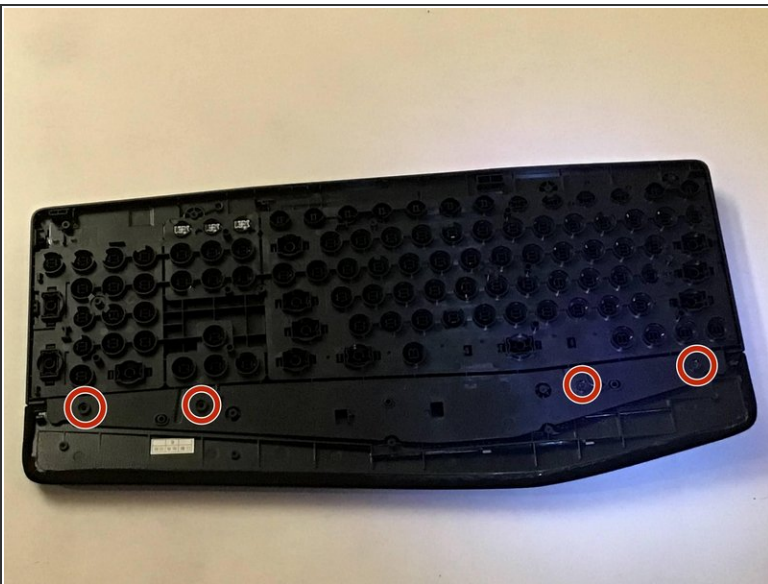
Step 3 — Separating The Halves



- Insert a spudger into the seam between the black side (front) and the white side (back).
- Pry the two halves apart, making your way around the keyboard.

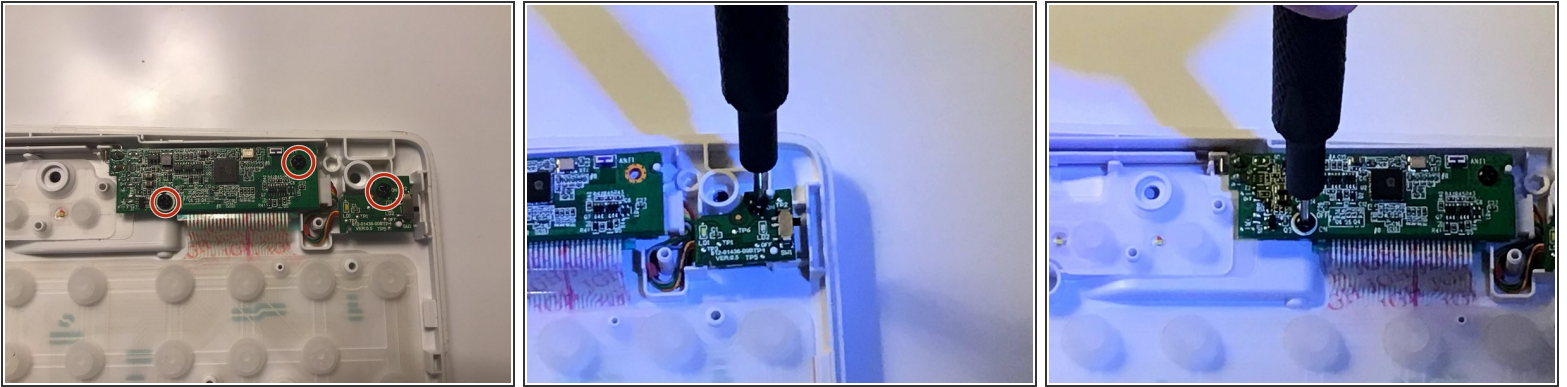
⚠ Be careful while prying, or else you may break the two plastic clips that hold the sides together.

Step 4 — Removing The Palm Rest



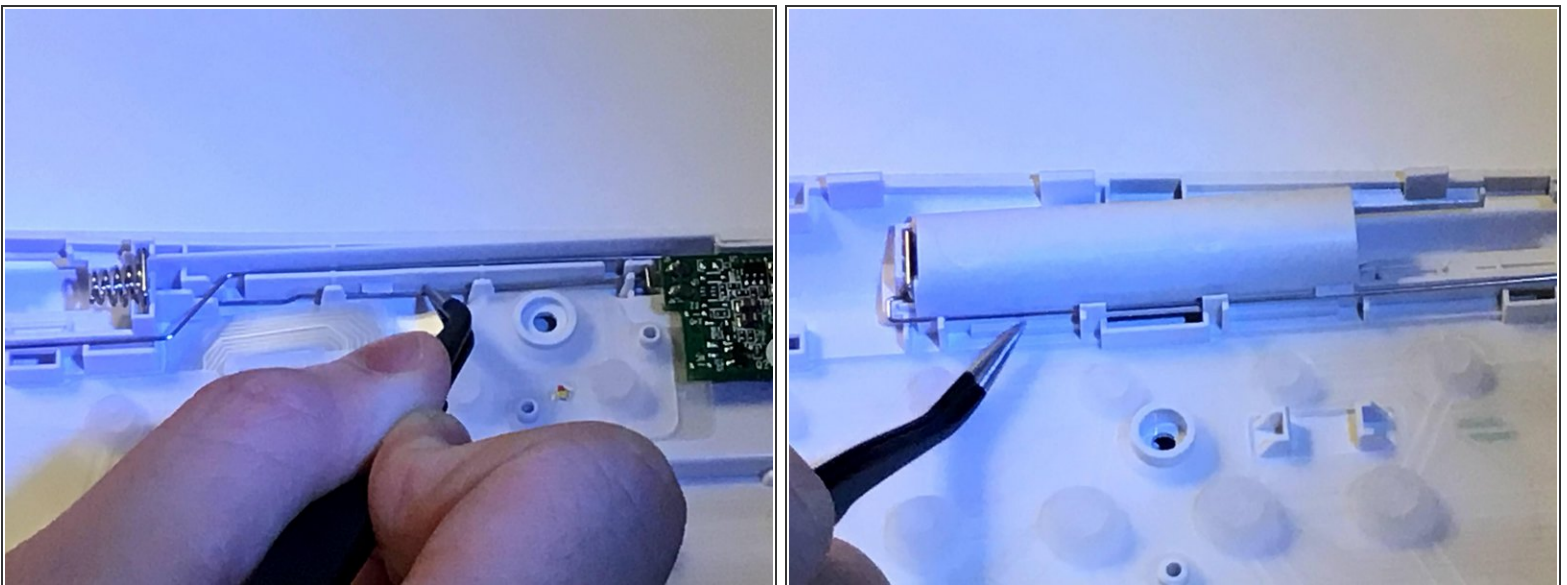
- Flip the black side (front) over so the keys face downwards.
- Remove the red highlighted screws, then remove the palm rest.

Step 5 — Unscrewing The Circuit Boards



- Unscrew the circuit boards using a Phillips 000 screwdriver.

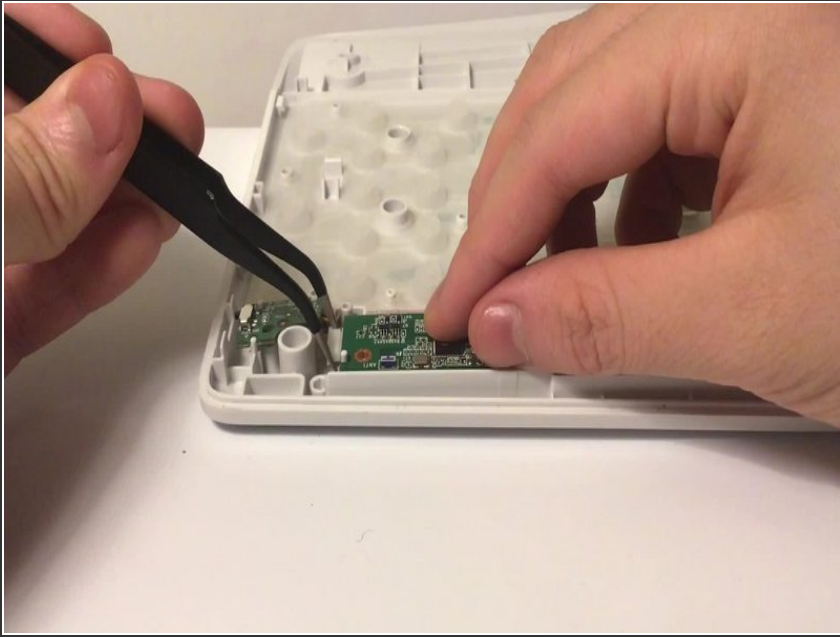
Step 6 — Freeing The Battery Connectors



- Use a pair of tweezers to bring the metal rods under and over the plastic hooks.

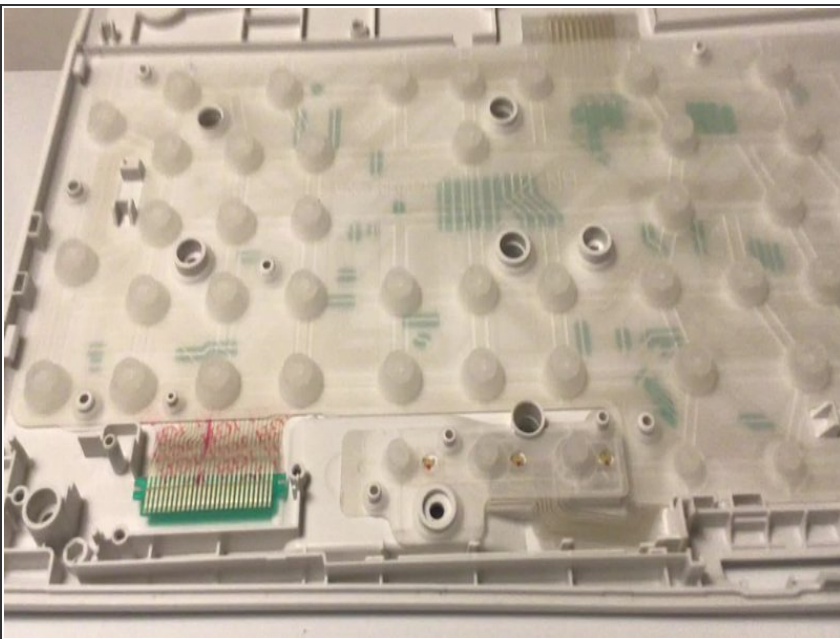
⚠ Approach with caution, you can break the metal rod and/ or the plastic hooks if you are too aggressive.

Step 7 — Removing The Circuit Boards



- Unplug the ribbon cable connecting the two boards and remove the power switch daughter board.
- Unplug the ribbon cable connecting the membrane to the main circuit board.

Step 8 — Removing The Membrane



- Peel off the membrane.

The Logitech K850 keyboard is quite complex, though it is somewhat easy to fix. However, with a ton of fragile components that need to be pried on, repairs can be difficult.

