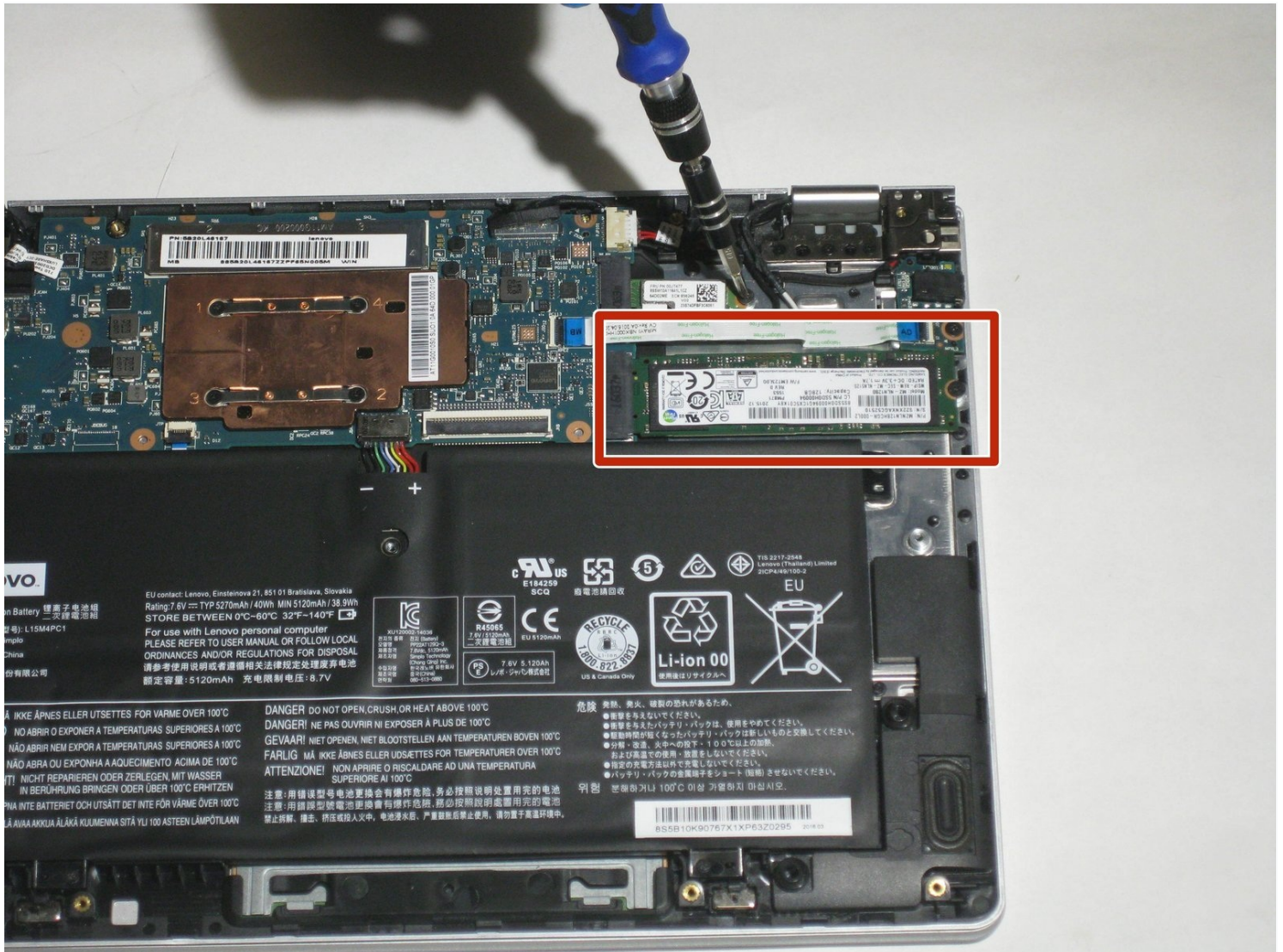




Lenovo Yoga 710-11ISK SSD Replacement

If your device isn't properly loading or is...

Written By: Richard



INTRODUCTION

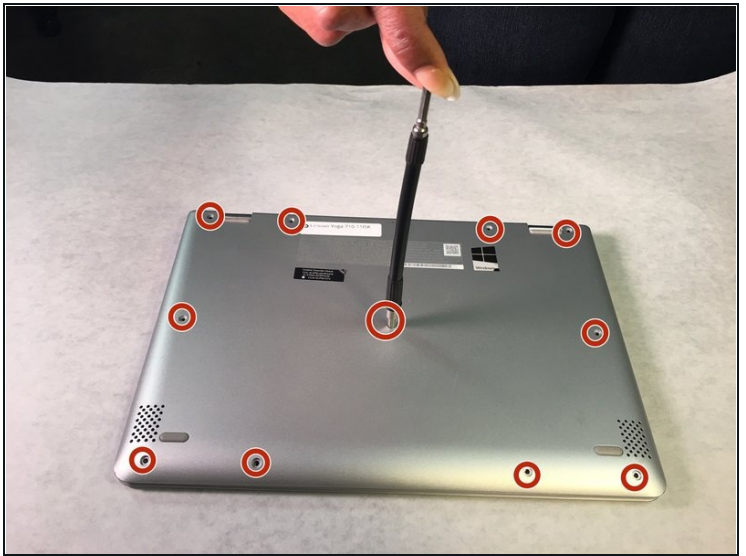
If your device isn't properly loading or is slow to load files, the SSD may be corrupt. Follow these instructions to replace the SSD in your Lenovo Yoga 710-11ISK.

TOOLS:

T5 Torx Screwdriver (1)

Phillips #00 Screwdriver (1)

Step 1 — Back Panel



- Make sure back panel is facing up.
- Remove eleven 5mm screws with the T5 Torx Screwdriver.

Step 2



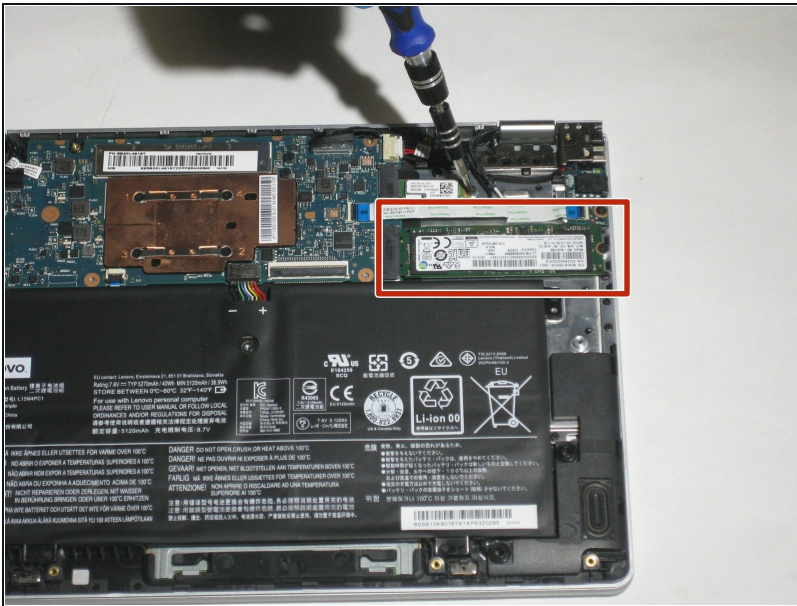
- Lift back panel carefully.
- ☑ You can now replace back cover, making sure to match screw holes and placement of the original.

Step 3 — SSD



- Use a Phillips #00 screwdriver to remove the single 3 mm screw on the right of the SSD.

Step 4



- Disconnect and pull the SSD out of the motherboard.

To reassemble your device, follow these instructions in reverse order.