



Dell Latitude E5410 Coin-Cell Battery Replacement

This guide is about how to install a new Coin-cell battery.

Written By: Dante Watson-Hardy



**TOOLS:**

- [Phillips #0 Screwdriver](#) (1)

**PARTS:**

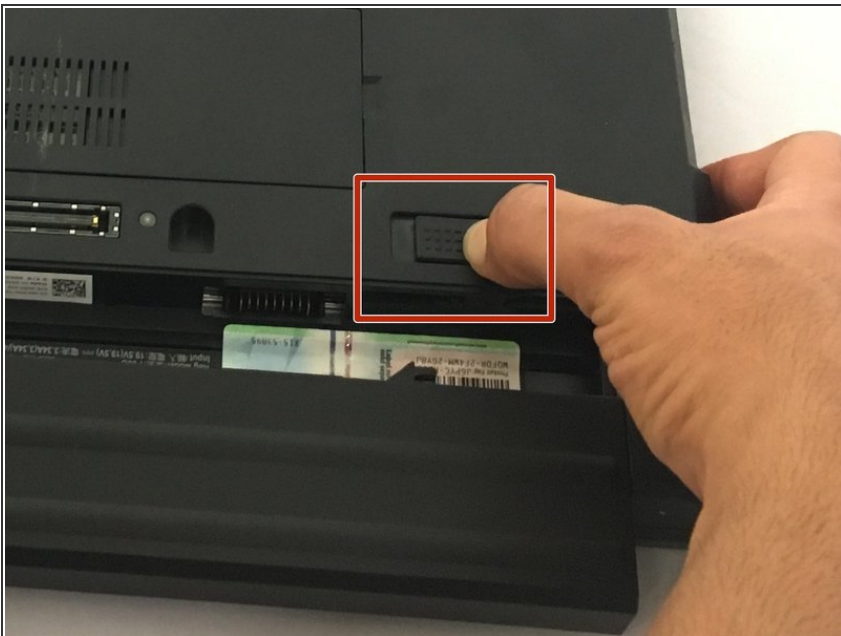
- [Replacement CMOS Battery for Dell Latitude E5410](#) (1)

Step 1 — Battery Replacement



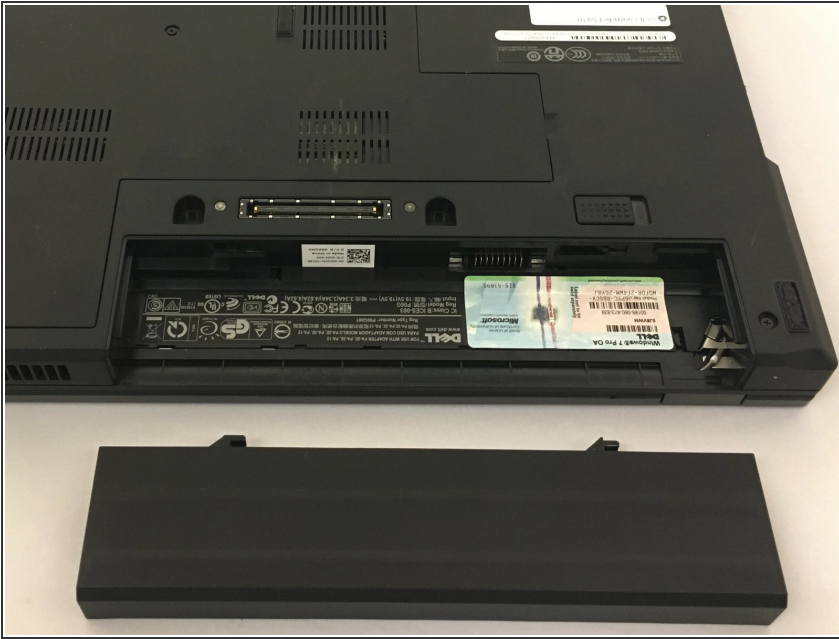
- Have your Dell Latitude E5410 unit ready face down.

Step 2



- Use your thumb to move the tab to the right that releases the battery, while using your other hand to slide the battery out.
- The battery will come out straight toward you.

Step 3



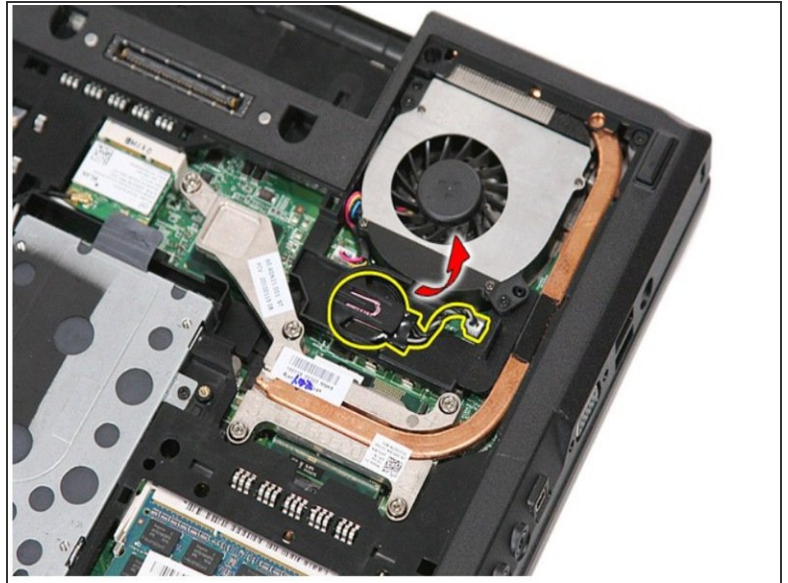
- Have your replacement battery ready to slide in.

Step 4 — Remove the Access Panel



- After removing the battery, loosen the screw that secures the access panel to the computer. Then, lift up the access panel at an angle and remove it from the computer.

Step 5 — Remove the Coin-cell battery



- Disconnect the coin-cell battery cable from the system board.
- Slide the coin-cell battery from its socket.

With you new battery, reassemble your device by performing the instructions above in reverse order.