



Dell Latitude E6440 CMOS/Coin Cell Battery Replacement

This guide will teach you how to remove and replace a CMOS/coin-cell battery for a Dell Latitude E6440 device

Written By: Aaron Thomas



**TOOLS:**

- [Phillips #0 Screwdriver](#) (1)

**PARTS:**

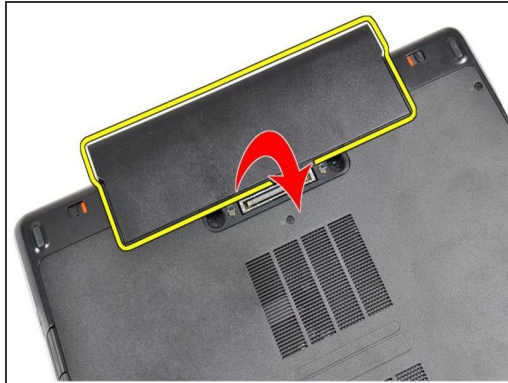
- [Dell Latitude E6440 CMOS Battery](#) (1)

Step 1 — Pre-Removal Instructions Before removing the Battery



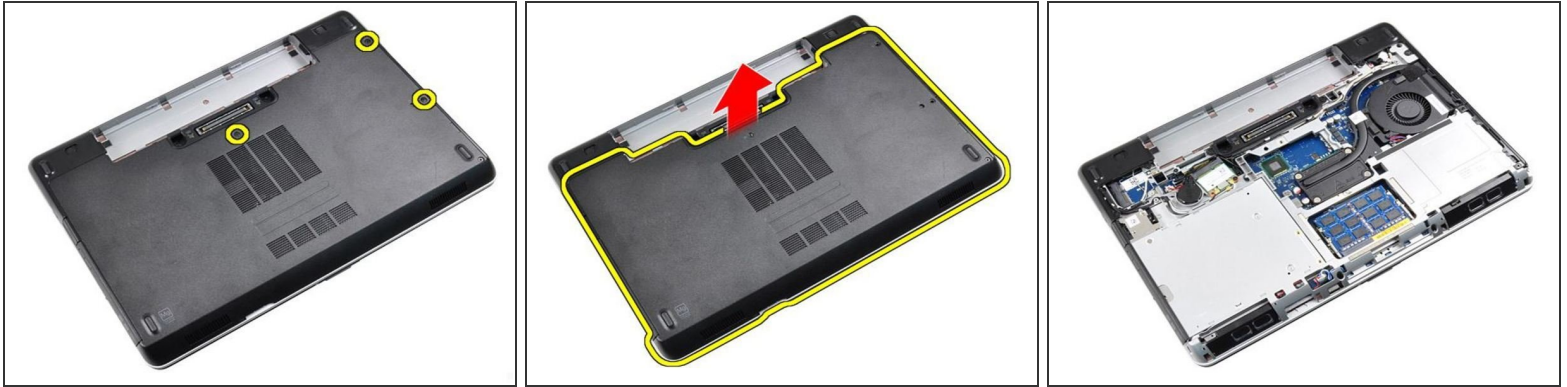
- Make sure all external components are removed from the device(ie. USBs, power cords, network cables, headphones, etc.) and the device is powered off.

Step 2 — Remove Battery



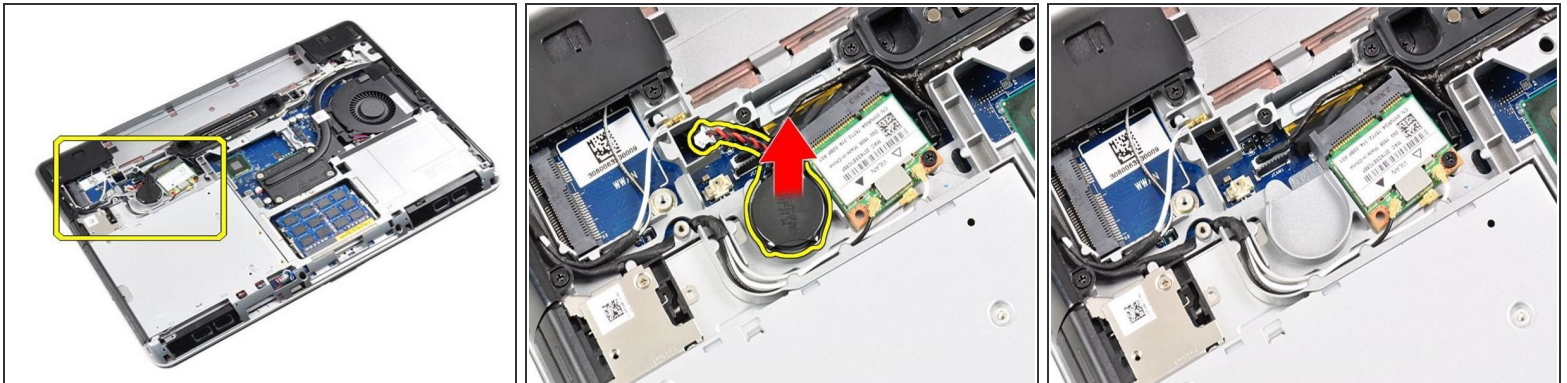
- Slide the battery release latches into the unlock position. Then, rotate the outer edge of the battery upward and remove from the system.

Step 3 — Remove the access panel



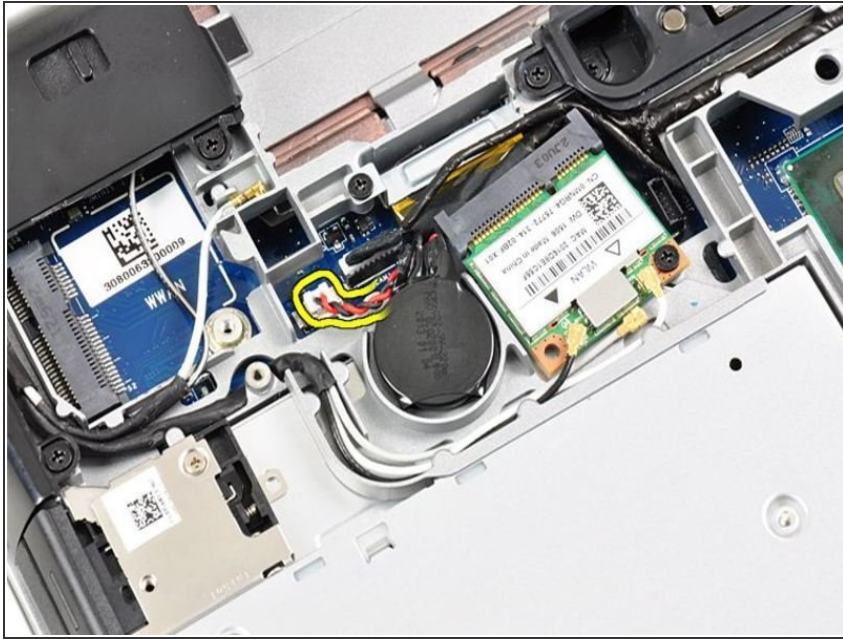
- After removing the battery, remove the screws securing the access panel in place. Then, lift the top edge of the access panel upward and remove the access panel.

Step 4



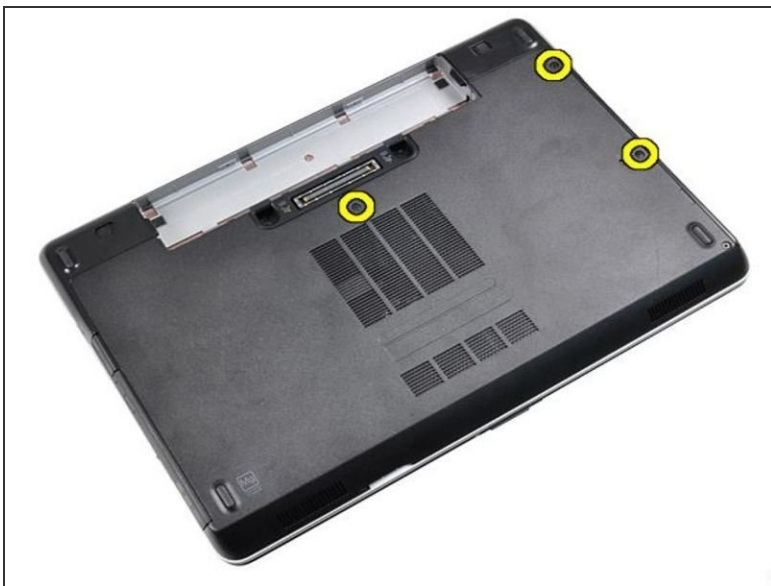
- After removing the access panel, locate the CMOS battery in the mid-left section of the panel. Careful disconnect the CMOS battery cable from the system, then pry the CMOS battery upward to remove. **NOTE: Remember not to touch any of the system components when the panel is open, as doing so could damage your system via electrostatic discharge.**

Step 5 — Replace CMOS Battery



- Using your replacement battery, carefully connect the CMOS battery to the system.

Step 6 — Reassemble your device.



- Now that you have replaced your CMOS battery, reassemble your device by completing all previous steps in reverse order.

To reassemble your device, follow these instructions in reverse order.

This document was generated on 2021-06-20 12:17:20 AM (MST).

