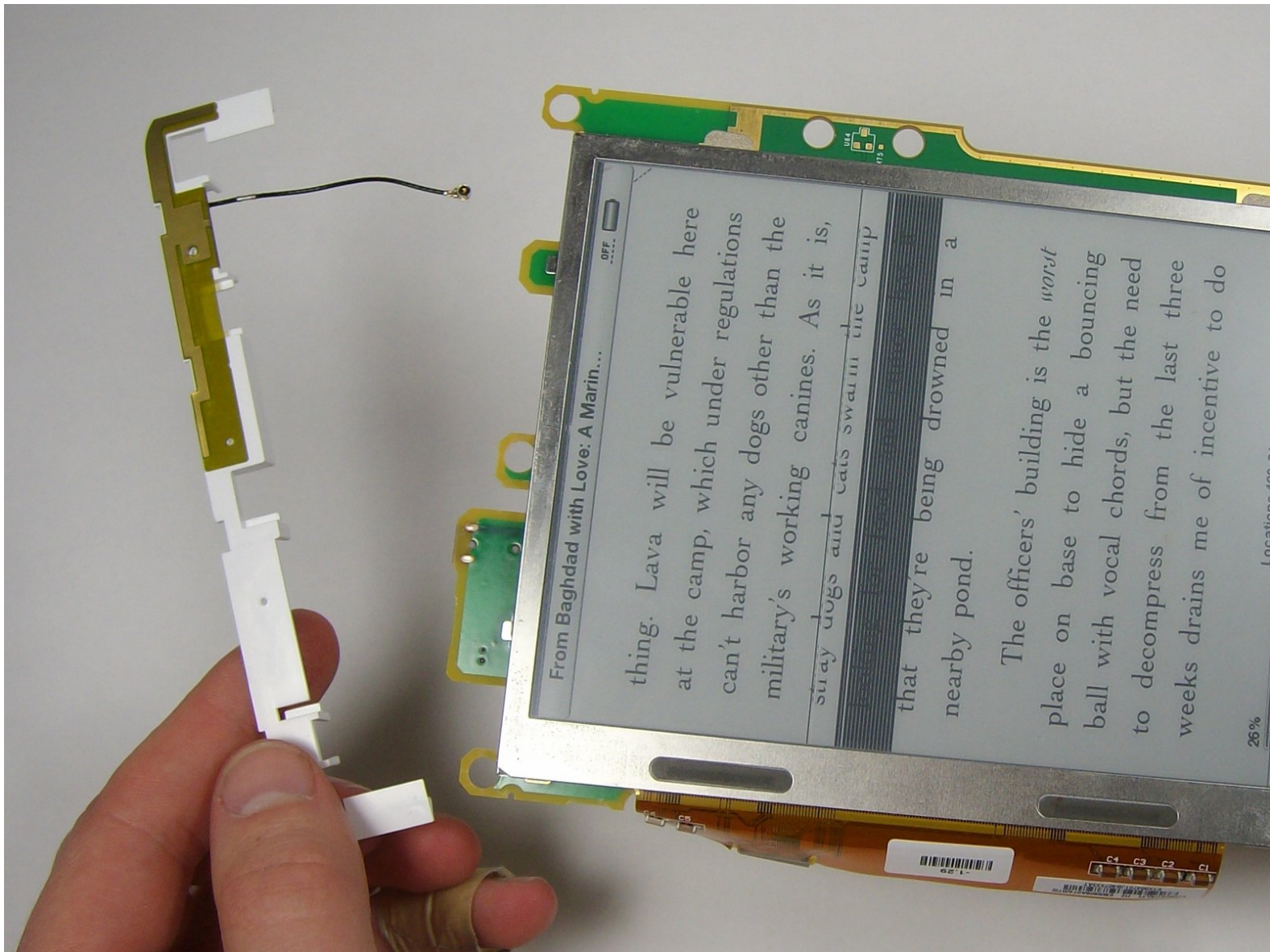




Kindle 2 Screen Replacement

If your second-generation Kindle screen is...

Written By: Dayna Scott



INTRODUCTION

If your second-generation Kindle screen is cracked, not responding to touch, or has a malfunctioning display, it may be time to replace it. Replace the screen on your Kindle 2 with this installation guide.

Kindle (2nd Gen) LCD displays can be purchased on eBay, AliExpress, Amazon, etc.



TOOLS:

- [Phillips #00 Screwdriver](#) (1)
 - [iFixit Opening Tool](#) (1)
-

Step 1 — Battery



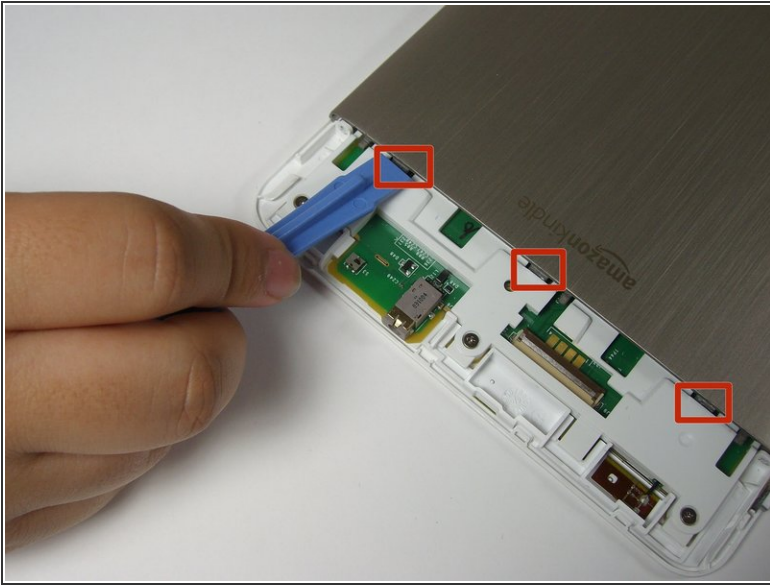
- Lay the Kindle face down on a soft cloth to protect its screen.
- Wedge the plastic opening tool in the small opening between the grey plastic and the metal casing.
- Move the plastic opening tool across the opening while pressing down to separate the grey plastic from the metal casing.
- Slide the gray plastic top piece away from the Kindle's metal casing.
- Once the gray plastic top piece is detached from the metal back cover, remove it.

Step 2



- Use a Phillips #00 screwdriver to remove the two 4 mm screws from the metal casing.

Step 3



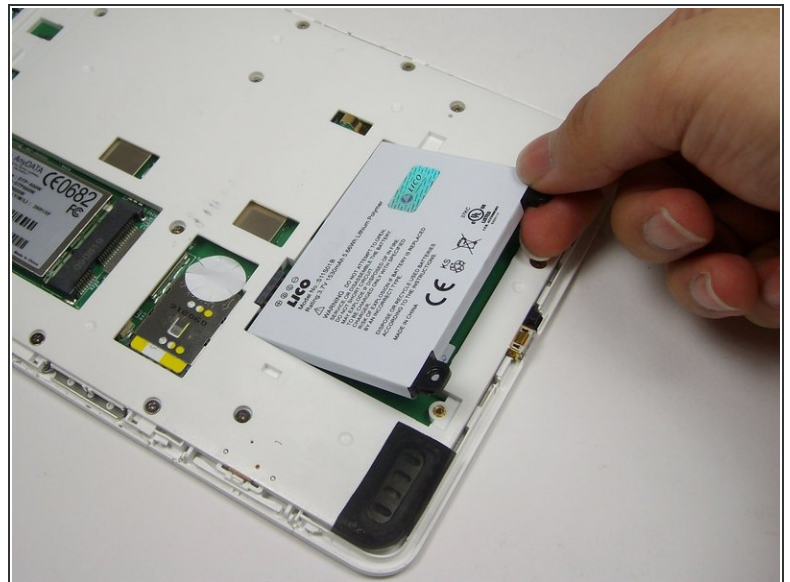
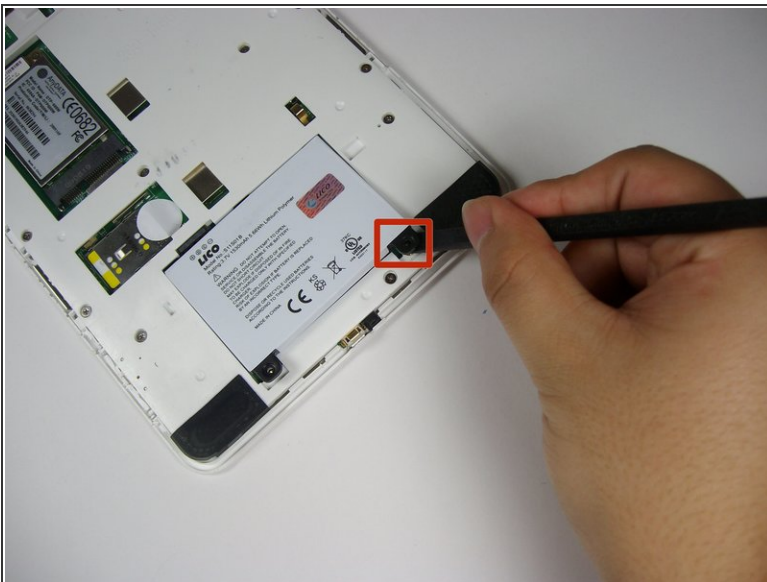
- Use the plastic opening tool to push down and pry towards the metal casing to release each of the three clips that hold the metal case in place.
- Remove the metal casing.
- ✦ The volume control button rests in a slot on the side of the Kindle. When the metal casing is removed, the volume control button may fall out. When reassembling, place the volume control button back into its slot.

Step 4



- Use a Phillips #00 screwdriver to remove the two 3 mm screws that hold the battery in place.
- ⚠ The battery should be removed before continuing with the rest of this guide to prevent harm to you and the device.

Step 5



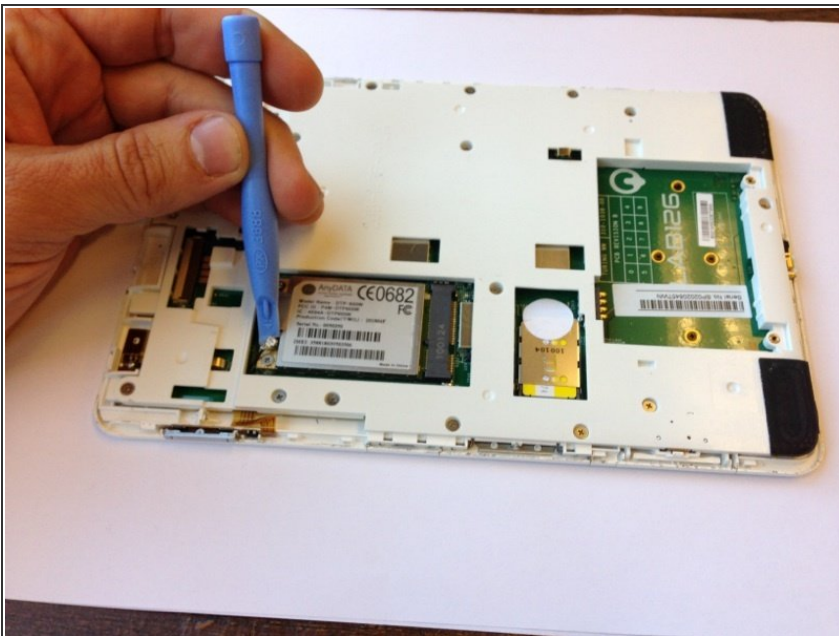
- Pry upward under the black tab with the spudger to dislodge the battery.
- Use your fingers to lift the battery out of the device.

Step 6 — Wireless Card



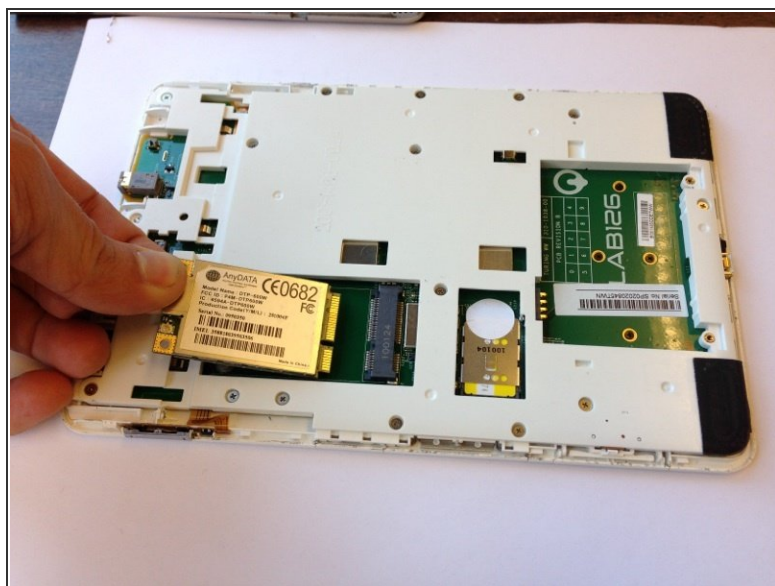
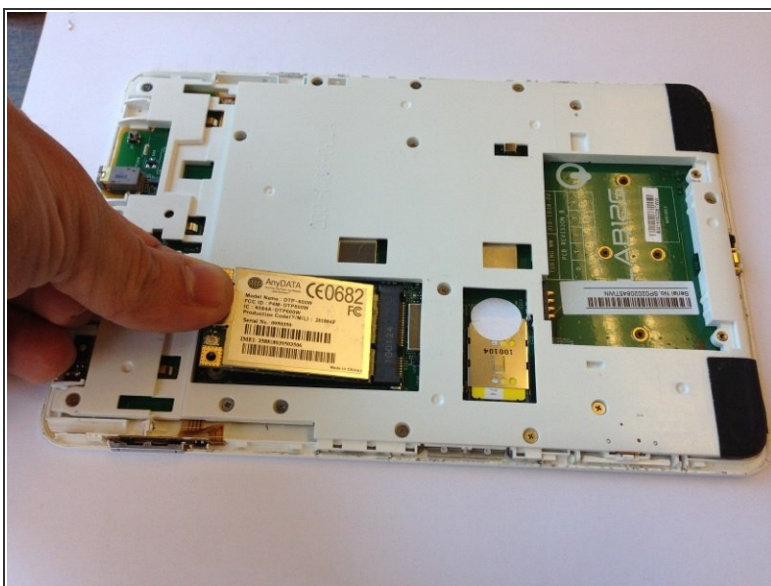
- ① Rotate the Kindle 180 degrees. Locate the wireless card with the AnyData logo on the top left and the FCC symbol on the right.
- Use a Phillips #00 screwdriver to remove the two 2mm screws from the wireless card.

Step 7



- Use the plastic opening tool to wedge underneath the connection and gently pop off the wire cap.

Step 8



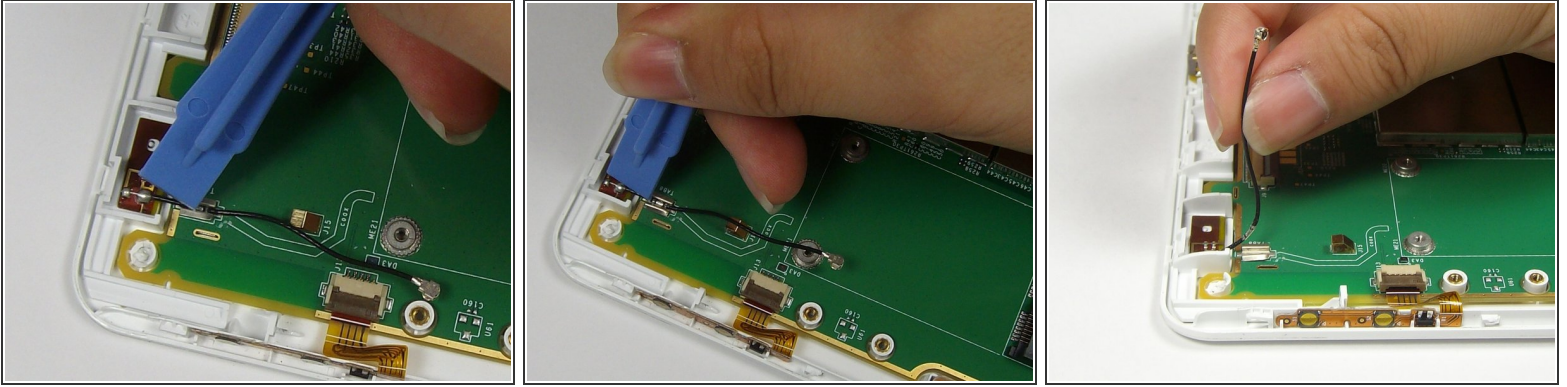
- Use your fingers to lift the left end of the wireless card.
- Pull the card out of the slot.

Step 9 — Motherboard



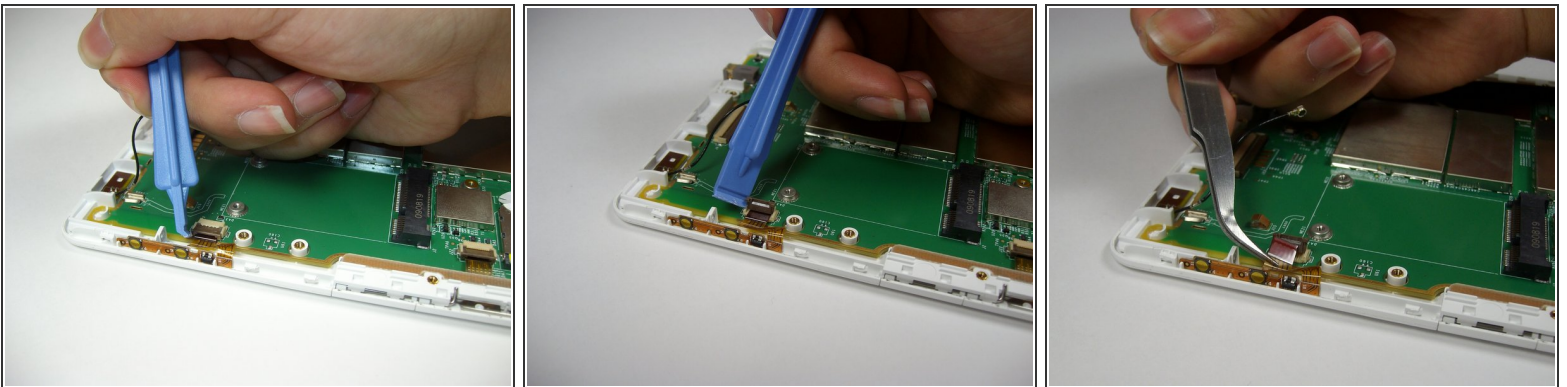
- Remove 16 screws from the midframe.

Step 10



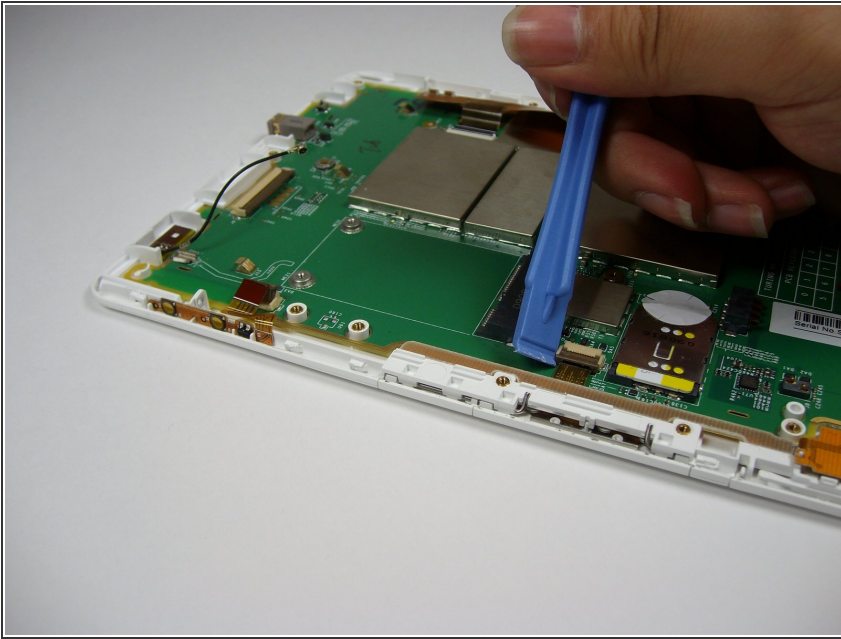
- Use the plastic opening tool to push each side of the crimp away from each other. This will open the crimp holding the wire.
- Use your fingers to lift the wire out of the crimp when there is enough separation between the sides of the crimp.

Step 11



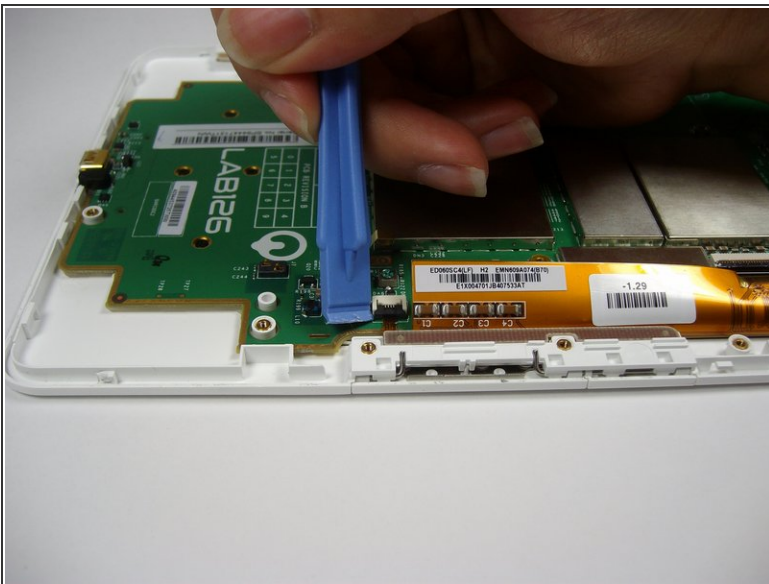
- Wedge the opening tool underneath the plastic ribbon and gently pull up to lift the brown connector flap.
- Squeeze the plastic ribbon gently with the tweezers and pull away from the connector to remove it.

Step 12



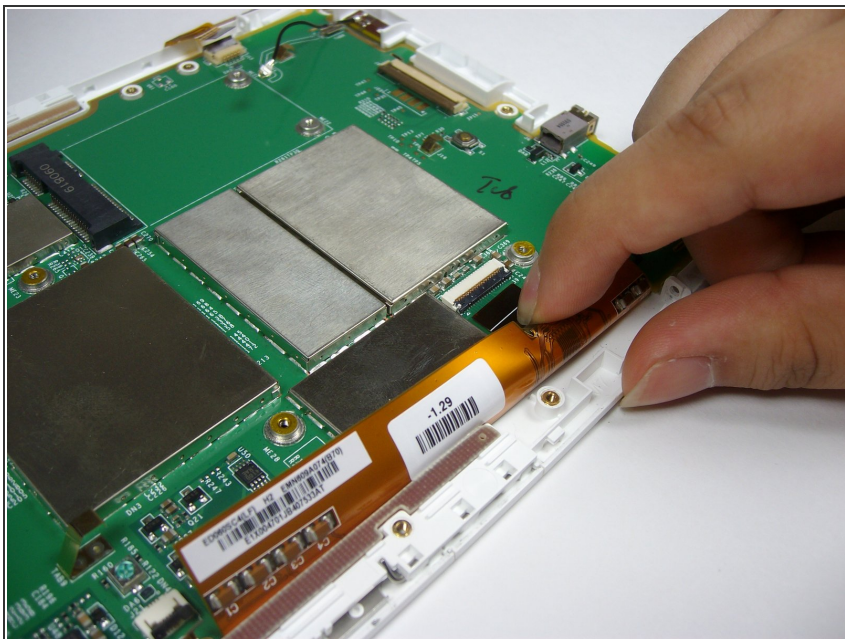
- Locate the next brown connector three inches to the right of the previous connector and repeat Step 10 to remove the plastic ribbon.

Step 13



- Rotate the device 180 degrees and locate a smaller brown connector on the left side of the device.
- Repeat Step 10.

Step 14



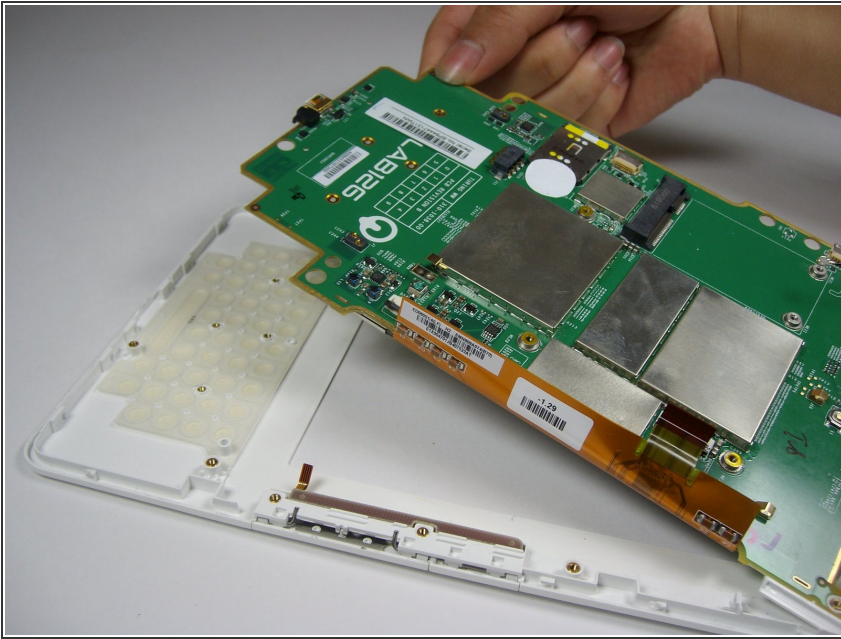
- Push your finger down on the last plastic ribbon.
- Slide your finger away from the connector to remove the last ribbon.

Step 15



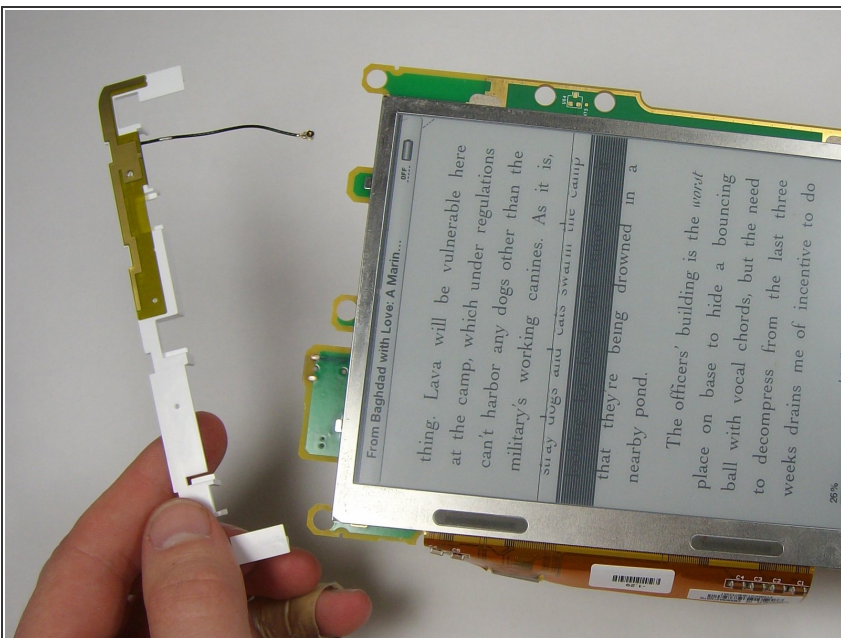
- Use a Phillips #00 screwdriver to remove the four 4 mm screws from the motherboard located around the LAB126 logo.

Step 16



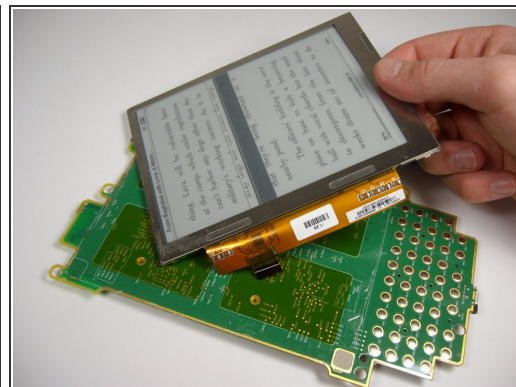
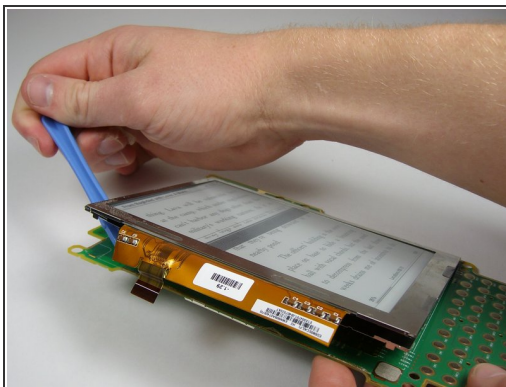
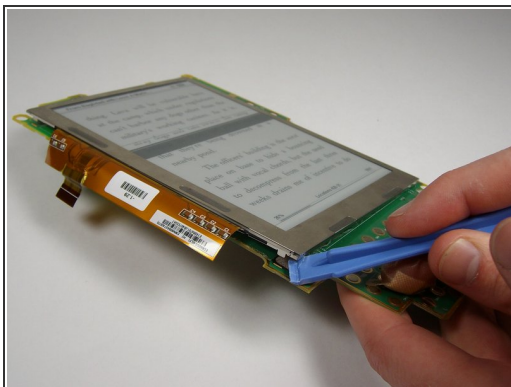
- Grab the bottom corner of the motherboard and safely remove it from the Kindle.


Step 17 — Screen



- Flip the motherboard over so the screen is facing up.
- Using your fingers, gently pull off the plastic header bar located at the top of the screen attached to the motherboard.

Step 18



 The screen is attached to the motherboard with double sided tape.

- Pry underneath all four sides of the device with the plastic opening tool to remove the screen from the motherboard.

To reassemble your device, follow these instructions in reverse order.