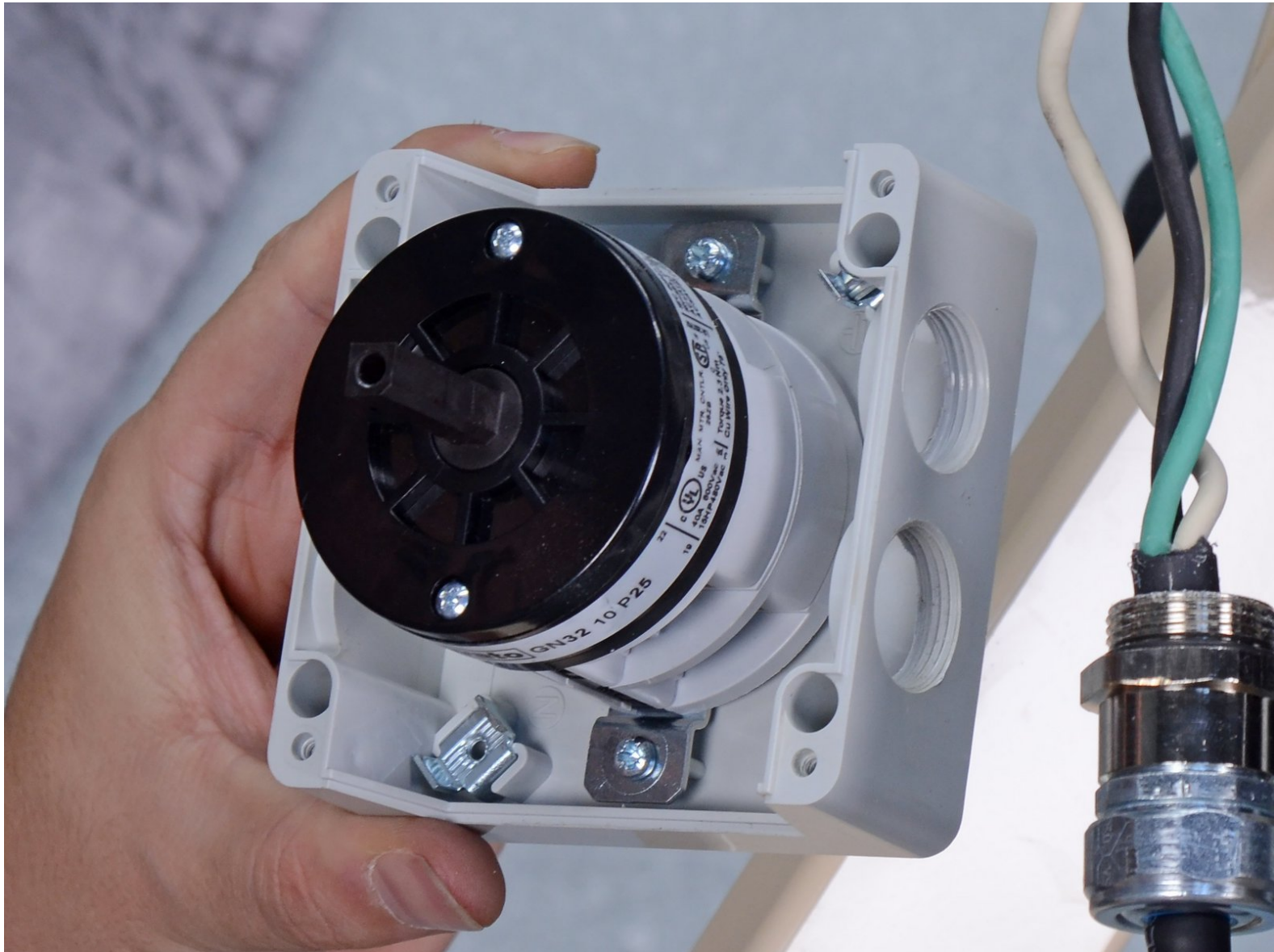




# EDCO Floor Stripper TS8 .75L (2017) On/Off Switch Replacement

How to remove and replace the on/off switch on an EDCO Floor Stripper TS8 .75L (2017).

Written By: Robert Boyd



# INTRODUCTION

Follow this guide to remove and replace the on/off switch on an EDCO Floor Stripper TS8 .75L (2017).



## TOOLS:

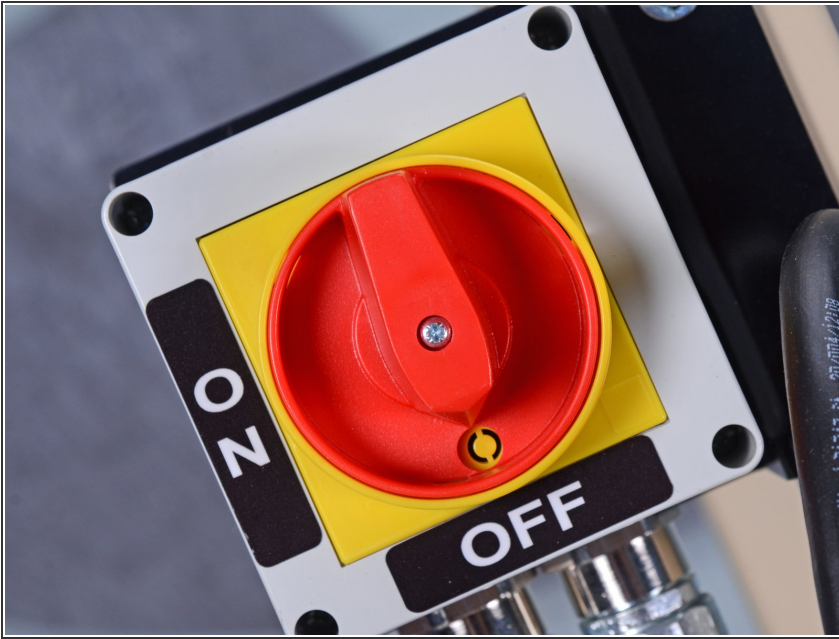
- [Phillips #1 Screwdriver](#) (1)
- [3/8" Socket](#) (1)
- [11/32" Socket](#) (1)
- [Flathead Screwdriver](#) (1)
- [Adjustable Wrench](#) (1)




## PARTS:

- [EDCO Switch, Rotary Cam On/Off Replacement Parts: 77043](#) (1)

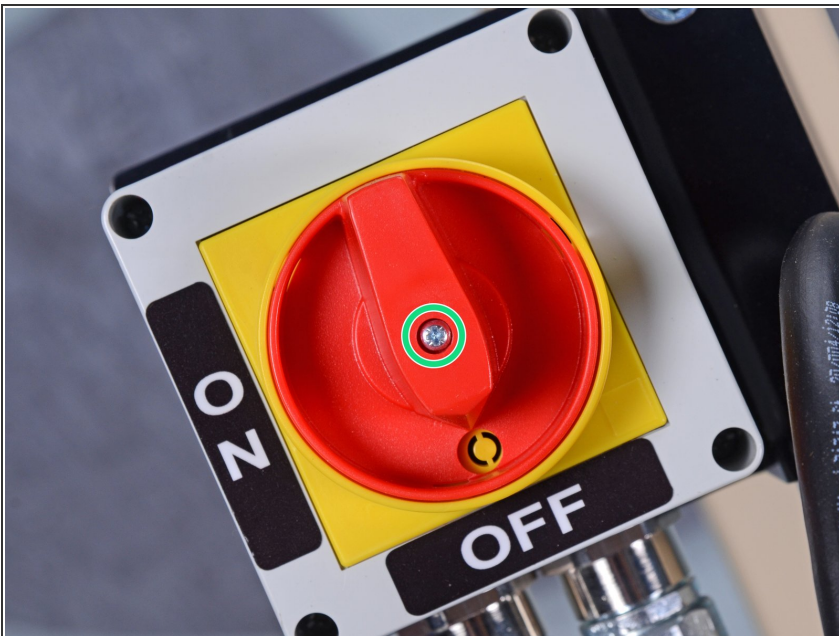
## Step 1 — Safety precautions



 Before you begin, ensure the device is powered down and cool to the touch.

- Ensure the machine is unplugged.
- Turn the power switch counterclockwise into the **OFF** position.

## Step 2 — Remove the screw from the red knob



- Use a Phillips screwdriver to remove the screw from the center of the red on/off knob.



### Step 3 — Remove the knob



- Remove the red knob.

☑ This component is keyed. During reassembly, ensure it is reinstalled in the correct orientation.

### Step 4 — Remove the black cap



- Remove the black plastic cap from the center of the switch assembly.

☑ This component is keyed. During reassembly, ensure it is reinstalled in the correct orientation.

## Step 5



- Use a Phillips screwdriver to remove the two screws securing the yellow switch guide to the switch assembly.
- ☑ During reassembly, ensure this component is installed in the same orientation, with the circle in the 6 o'clock **OFF** position.

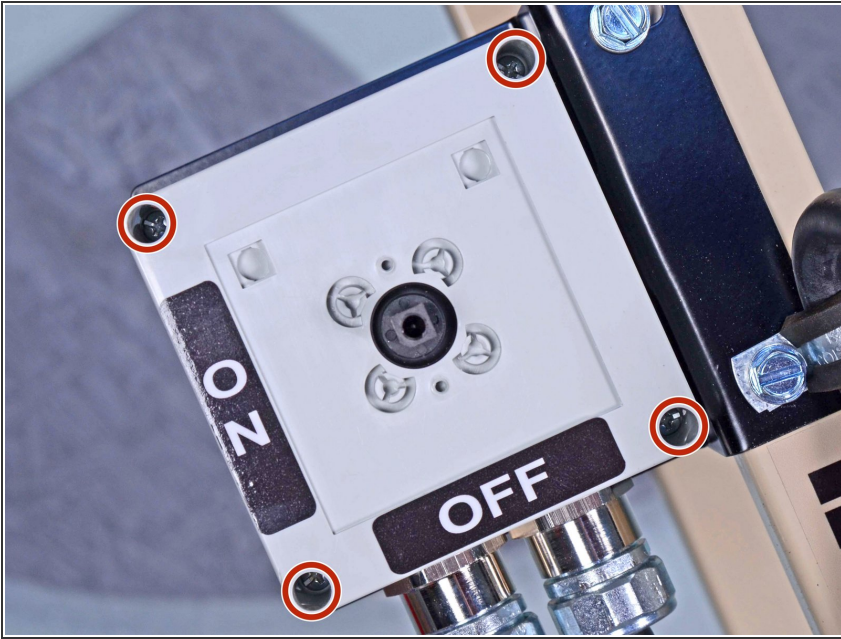
## Step 6



- Remove the yellow switch guide from the switch assembly.
- Remove the black plastic spacer from underneath the yellow switch guide.



## Step 7 — Remove the upper switch housing



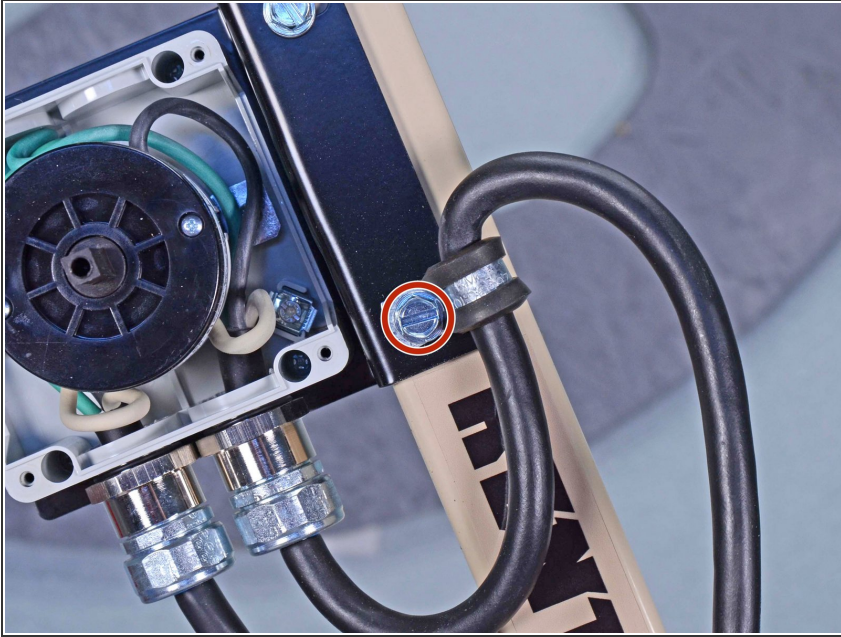
- Use a Phillips screwdriver to remove the four screws securing the upper half of the switch housing to the lower half.
- ⓘ These screws may not come out of their recesses in the housing once they are completely unthreaded. If some stay inside once loose, don't lose track of them.

## Step 8



- Lift the upper half of the switch housing off of the lower half."
- ★ The [rubber gasket](#) may fall out of the upper housing during the removal process. Do not forget to reinstall the gasket upon reassembly.

## Step 9 — Disconnect the power cord from the frame



- Use a 3/8 inch socket to remove the bolt securing the power cord loom clamp to the switch bracket.

## Step 10 — Remove the loom clamp



- Remove the loom clamp from the power cable.

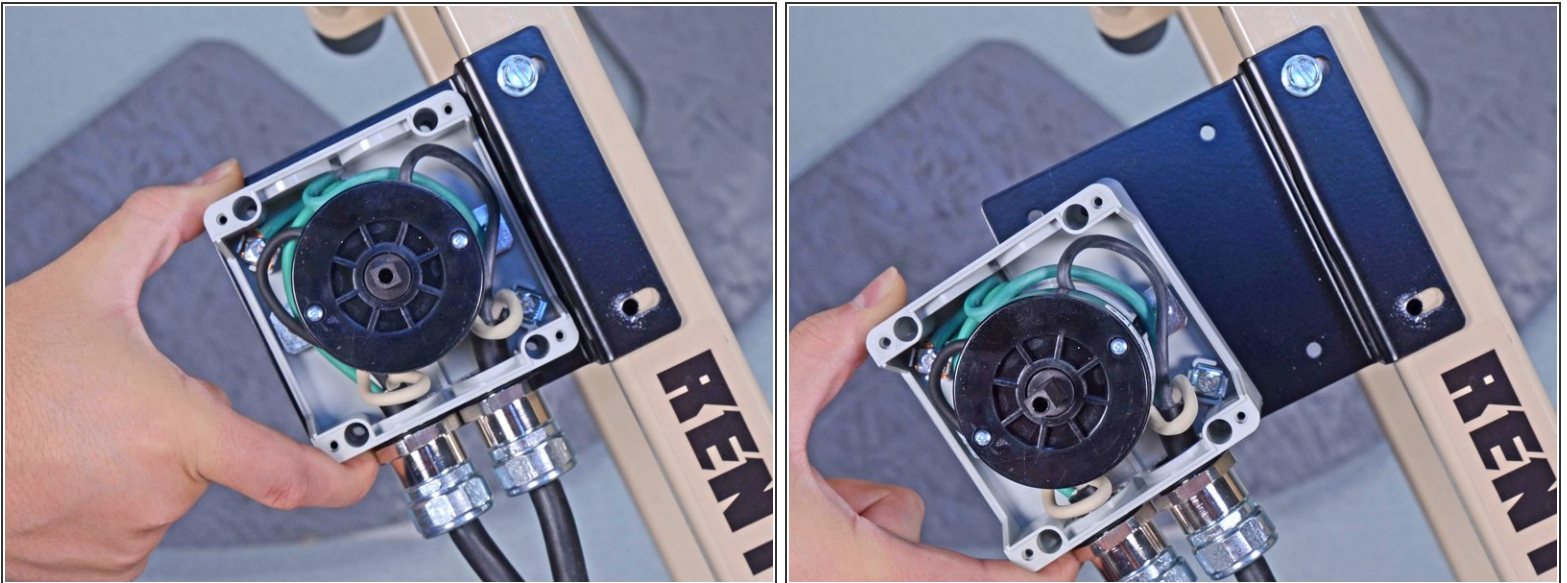


## Step 11 — Remove the switch housing



- Use a socket to remove the four 11/32 inch nuts from the on/off switch bracket.
- ☞ During reassembly, use a Phillips screwdriver in combination with the 11/32 inch socket wrench to tighten the bolts securing the switch to the bracket."

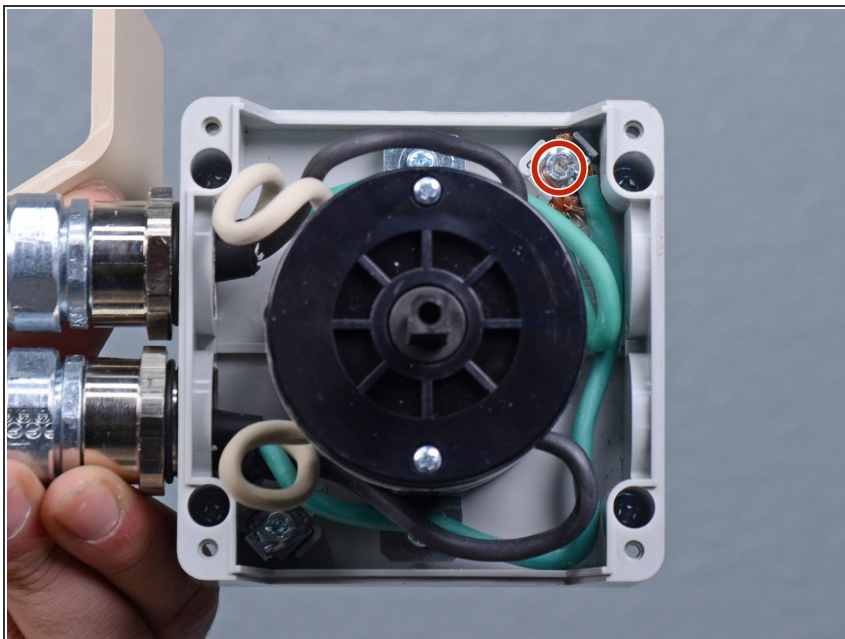
## Step 12



- Lift the switch assembly off of the switch bracket.
- ⓘ The switch housing bolts may fall out when you remove the housing.

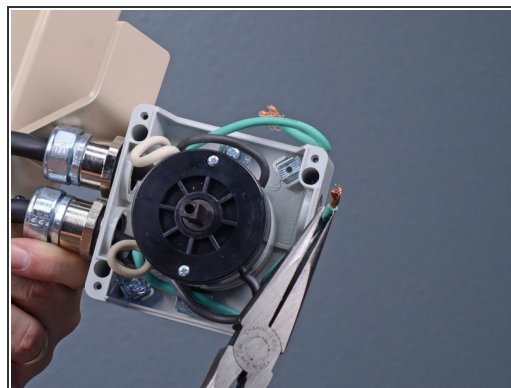
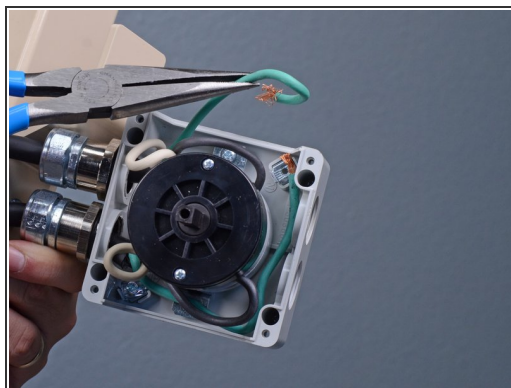
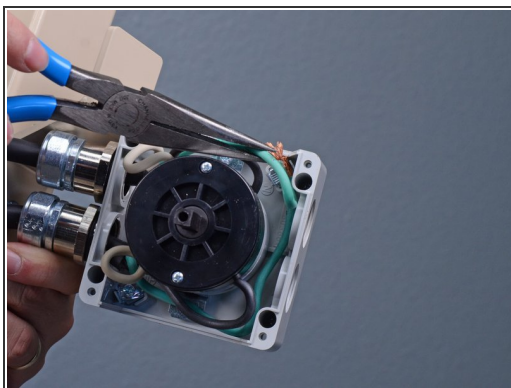


## Step 13 — Disconnect the green wires



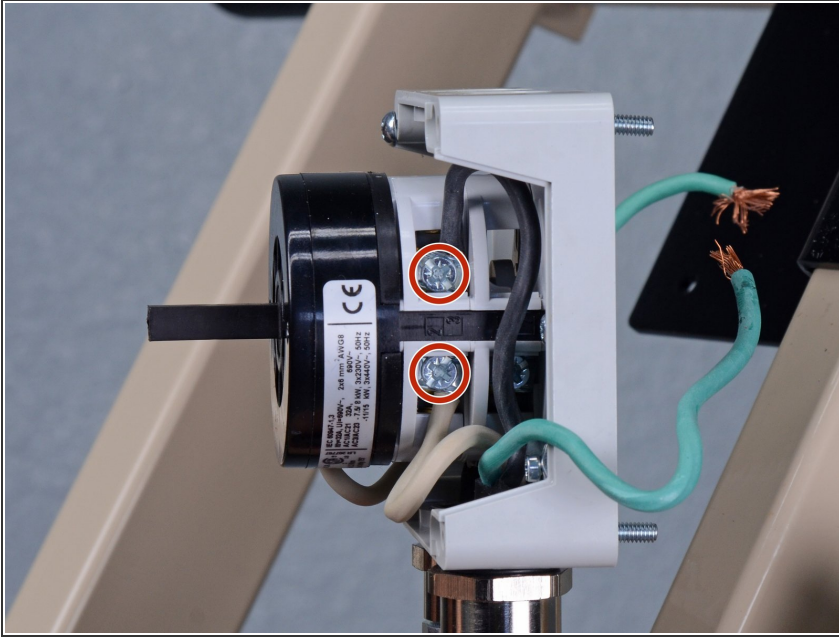
- Use a flathead screwdriver to remove the screw securing the two green ground wires to the switch housing.

## Step 14



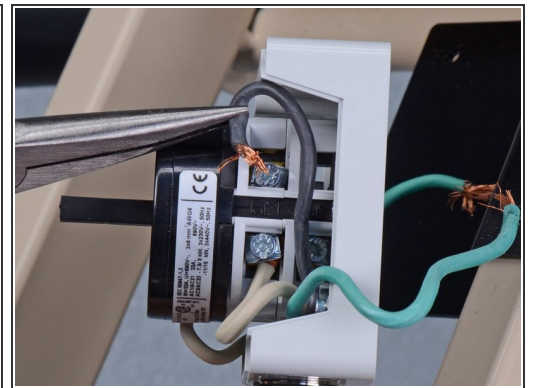
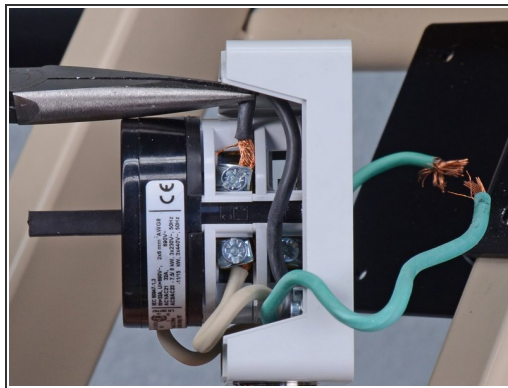
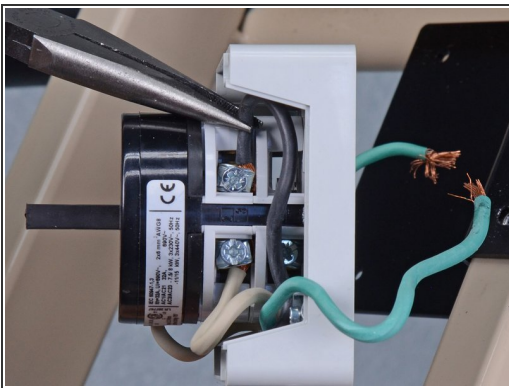
- Separate the green ground wires from each other and move them away from the switch housing.

## Step 15 — Disconnect the power cord from the switch



- Use a flathead screwdriver to loosen the two screws on the right side of the switch assembly securing the black and white wires from the power cord.
- ★ During reassembly, ensure each wire is installed in its correct location on the switch.

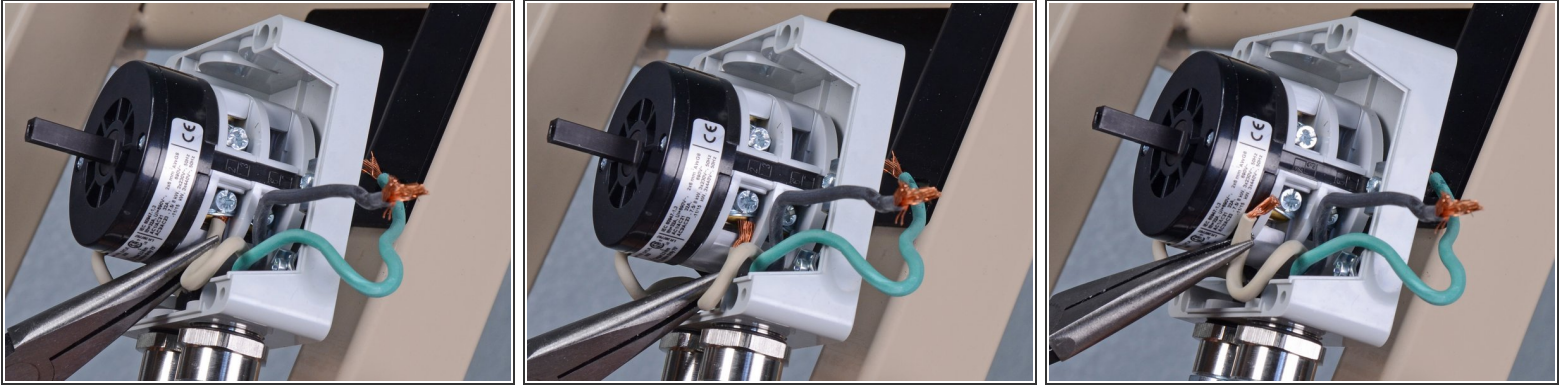
## Step 16



- Remove the black wire from the switch.



## Step 17



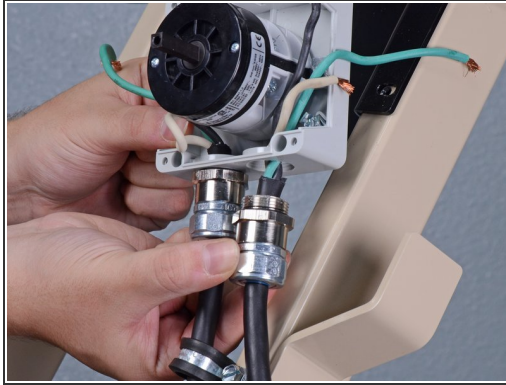
- Remove the white wire from the switch.

## Step 18



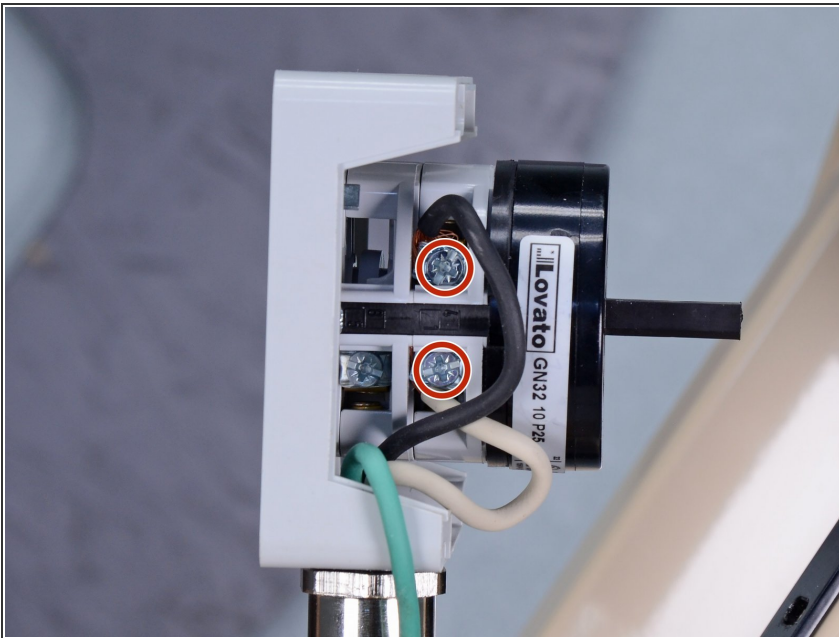
- Use a 1-1/16 inch wrench or an adjustable wrench to loosen the power cord's strain relief fitting from the switch housing.
- Once the fitting is loose enough to turn by hand, twist the power cord and fitting counterclockwise until it is fully unthreaded from the switch housing.

## Step 19 — Remove the power cord



- Remove the power cord from the on/off switch.

## Step 20 — Remove the on/off switch



- Use a flathead screwdriver to loosen the two screws securing the wiring harness's black and white wires to the switch.



## Step 21



- Remove the black wire from the switch.

## Step 22



- Remove the white wire from the switch.

## Step 23



- Use a 1-1/16 inch wrench or an adjustable wrench to loosen the wiring harness cable's strain relief fitting from the switch housing.
- Once the fitting is loose enough to turn by hand, twist the wiring harness cable and fitting counterclockwise until it is fully unthreaded from the switch housing.
- ⓘ You may need to rotate the switch assembly itself since the wiring harness cable is connected to the device, preventing it from rotating freely.

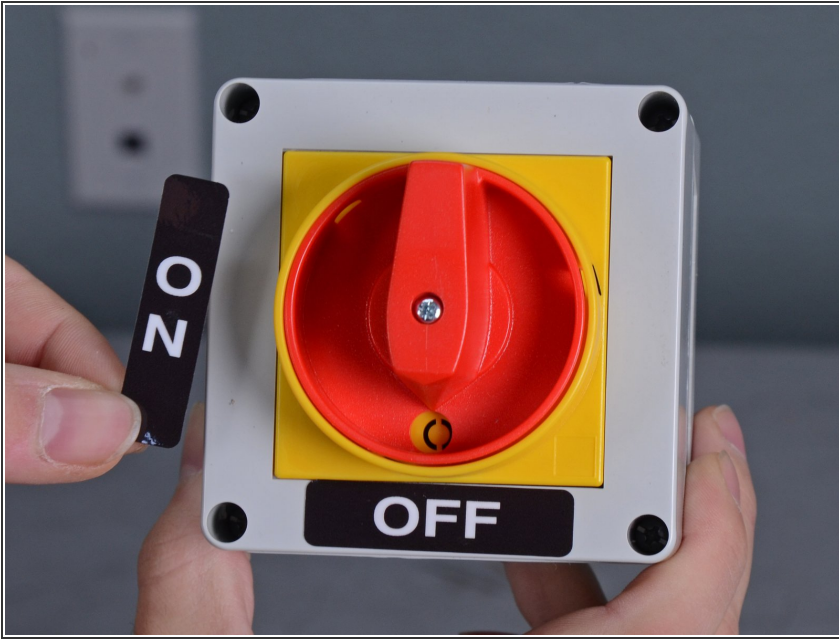
## Step 24



- Remove the on/off switch from the auxiliary cable.



## Step 25 — Reassembly tip



- ★ Reassembly tip: ensure the replacement switch is labeled with the correct stickers, matching the old part."

To reassemble your device, follow these instructions in reverse order.