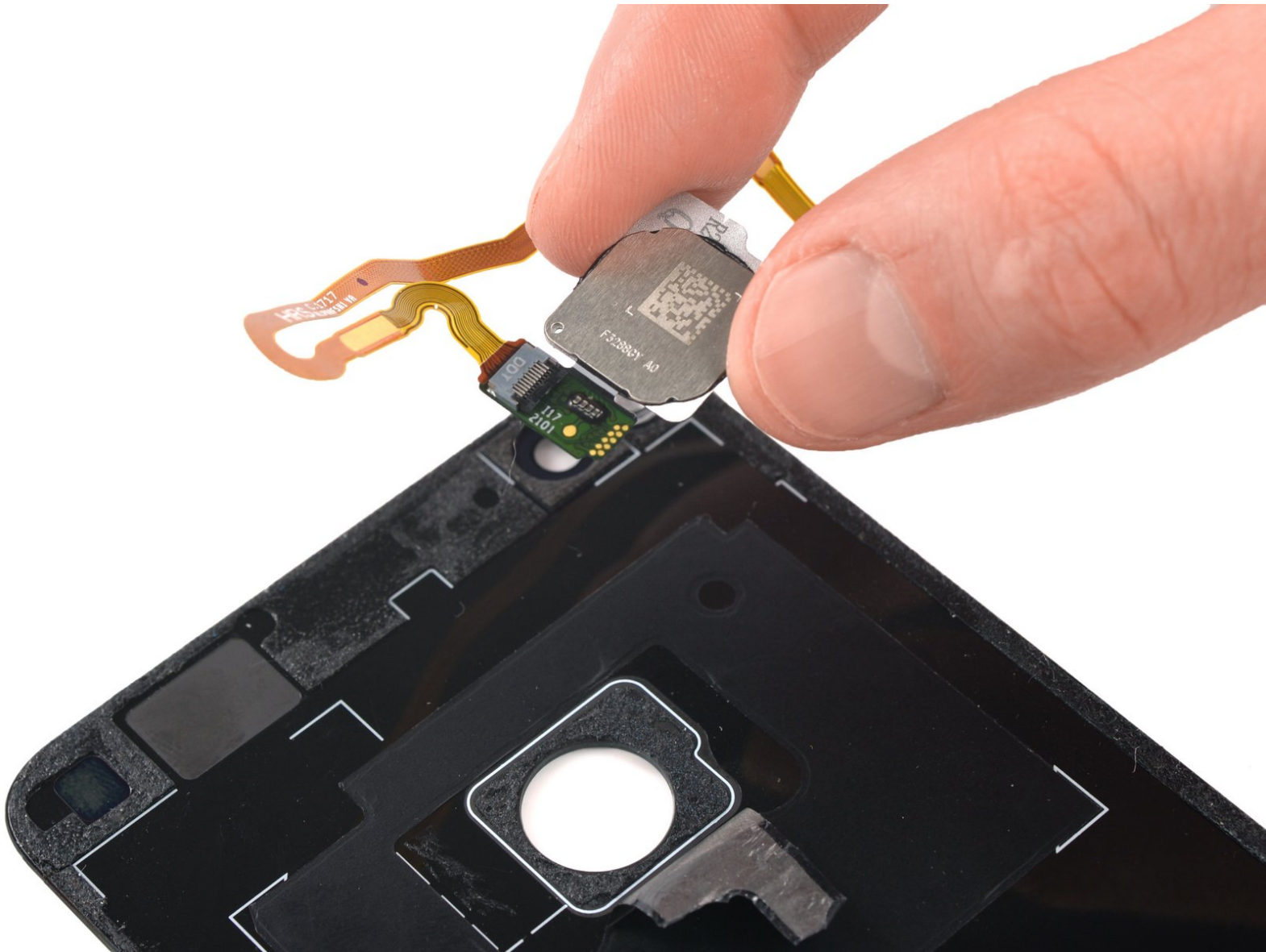




Huawei P8 Lite (2017) Fingerprint Sensor Replacement

How to replace a damaged fingerprint sensor on your Huawei P8 Lite (2017).

Written By: Adriana Zwink



INTRODUCTION

Use this guide to replace a damaged fingerprint sensor on your Huawei P8 Lite (2017) .

You'll need replacement adhesive to reattach components when reassembling the device.



TOOLS:

- [iOpener](#) (1)
 - [Suction Handle](#) (1)
 - [iFixit Opening Picks set of 6](#) (1)
 - [Phillips #00 Screwdriver](#) (1)
 - [Spudger](#) (1)
 - [ESD Safe Tweezers Blunt Nose](#) (1)
-

Step 1 — Apply a heated iOpener



- [Heat an iOpener](#) and apply it to the rear glass for two minutes.
- ⓘ A hair dryer, heat gun, or hot plate may also be used, but be careful not to overheat the P8 Lite—the display and internal battery are both susceptible to heat damage.

Step 2 — Create a gap



- Apply a suction cup to the rear glass, as close to the right edge as possible.
 - ⓘ If the phone's rear glass is cracked, the suction handle may not stick. Try [lifting it with strong tape](#), or superglue the suction handle in place and allow it to cure so you can proceed.
- Pull up on the suction cup with strong, steady force to create a gap.
 - ⓘ Depending on the age of your device, this may be difficult. If you have trouble, apply more heat to further soften the adhesive and try again.
- Insert the tip of an opening pick into the gap between the rear glass and frame.

Step 3 — Slice the adhesive



- Slide the tip of the opening pick to the bottom right corner to cut the adhesive.
- Leave it there to prevent the adhesive from resealing.

Step 4



- Insert a second opening pick at the bottom right corner.
- Slide the tip of the opening pick to the top right corner to slice the adhesive.
- Leave the opening pick at its place to prevent the adhesive from resealing.

Step 5



- Insert a third opening pick at the top right corner.
- Slide it to the top left corner to cut the adhesive.
- ① In case you're having trouble to cut the adhesive, reapply the [iOpener](#) for another minute to loosen it.
- Leave the opening pick at its place to prevent the adhesive from resealing.

Step 6



- Insert a fourth opening pick at the top left corner.
 - ⚠ Do not insert the opening pick deeper than 1 cm (1/3rd of an inch) to avoid damage the fingerprint sensor cable.
- Slide the tip of the opening pick to the bottom left corner to cut the adhesive.
- Leave the opening pick in its place to prevent the adhesive from resealing.

Step 7



- Insert a fifth opening pick at the bottom left corner.
- Slide it to the bottom right corner to cut the remaining adhesive.

 Try not to remove the rear glass yet! The fingerprint sensor is still connected to the motherboard.

Step 8 — Rotate the rear glass



- Open the P8 Lite by swinging the rear glass up from the left side, like the back cover of a book.
- Place the rear glass on the top of the battery.

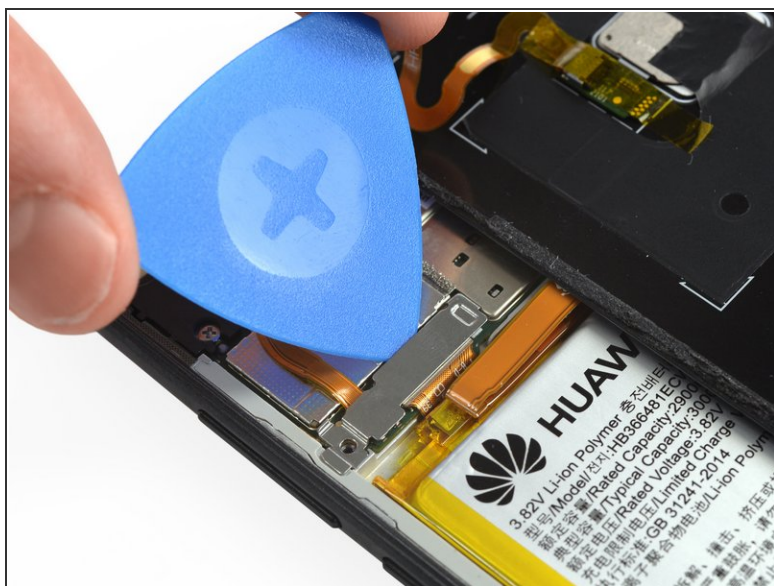
 Avoid tensioning the display cable during this procedure.

Step 9 — Unscrew the fingerprint sensor connector cover



- Use a Phillips #00 screwdriver to remove the 2.9 mm screw.

Step 10 — Remove the metal shield



- Use the tip of an opening pick to pry up and loosen the metal shield.

Step 11 — Remove the metal shield



- Use a pair of tweezers to remove the metal shield.

Step 12



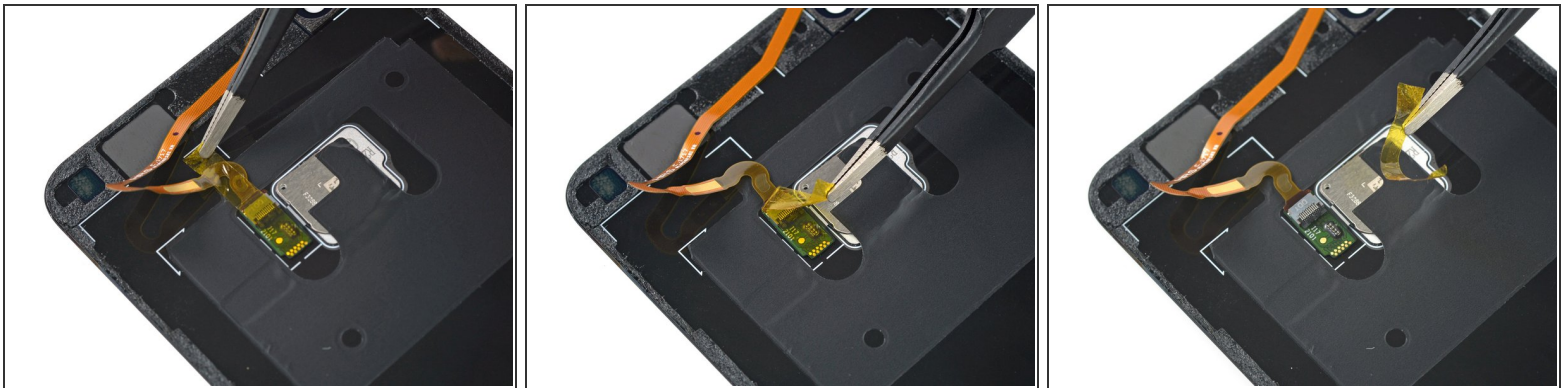
- Use a spudger to pry up and disconnect the fingerprint sensor cable.

Step 13



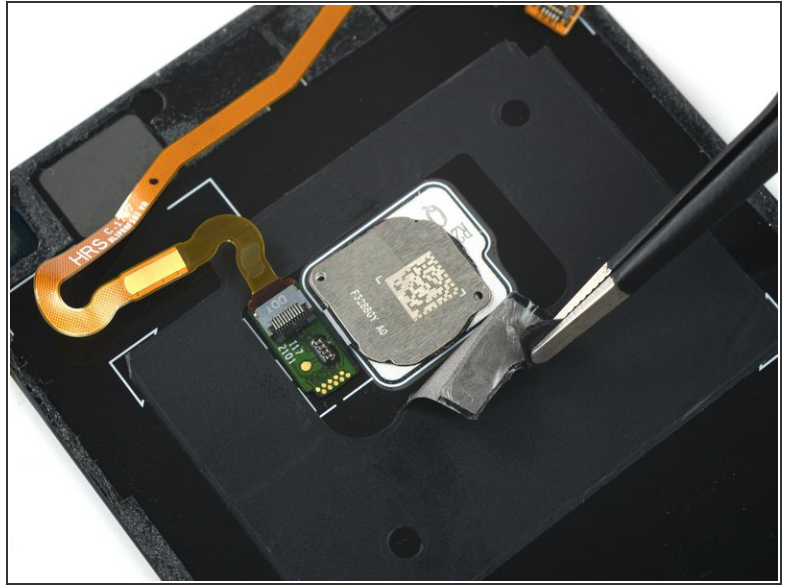
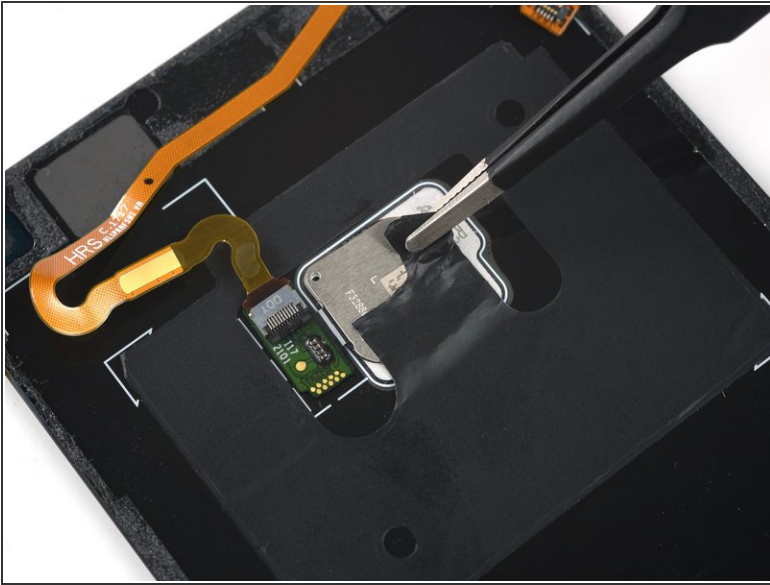
- Remove the rear glass.
- ★ After installing the rear glass, apply strong, steady pressure to your phone for several minutes to help the adhesive form a good bond—a stack of heavy books works well.

Step 14 — Peel off the yellow sticker



- Use a pair of tweezers to peel off the yellow protective sticker from the fingerprint sensor connector.

Step 15 — Peel off the black sticker



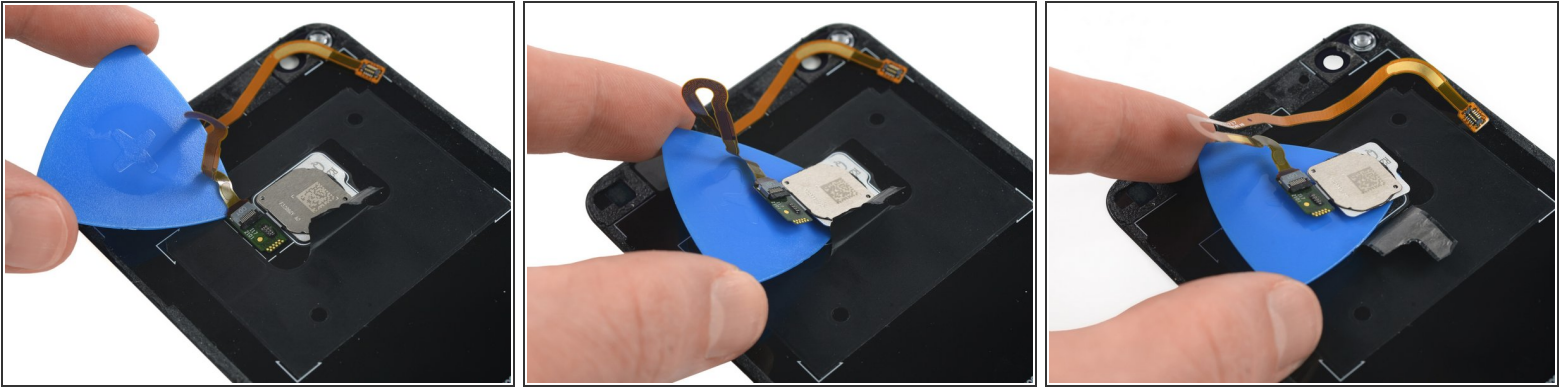
- Peel off the black sticker until the sensor is completely exposed.

Step 16 — Heat an iOpener



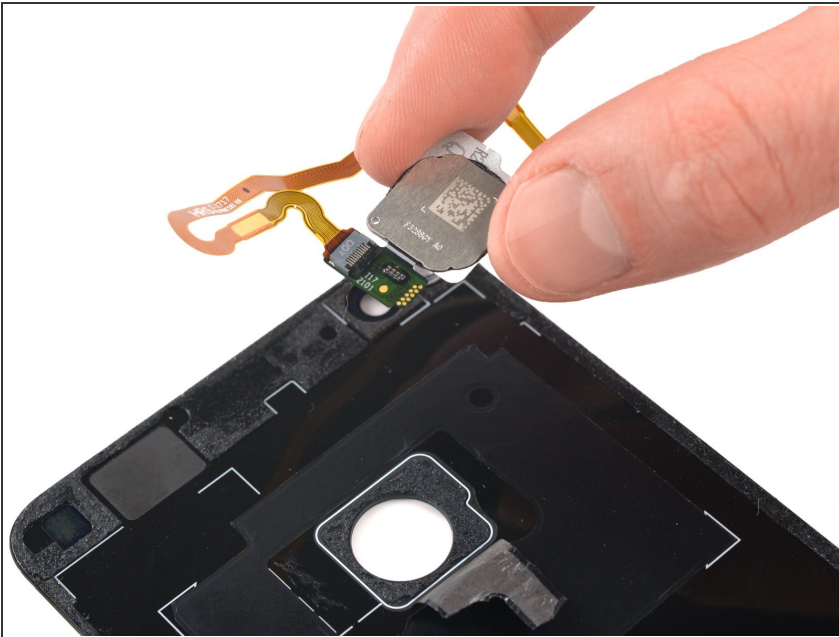
- [Heat an iOpener](#) and apply it to the rear glass where the fingerprint sensor is located to loosen the adhesive underneath.

Step 17 — Slice the adhesive



- Slide an opening pick underneath the top edge of the small board next to the fingerprint sensor.
- Use the opening pick to carefully loosen the adhesive underneath the fingerprint board.
- Slide the opening pick underneath the fingerprint sensor to cut the remaining adhesive holding it in place.

Step 18



- Remove the fingerprint sensor.

Secure the new rear glass with pre-cut adhesive or double-sided adhesive tape.

To reassemble your device, follow these instructions in reverse order. Apply new adhesive where necessary after cleaning the relevant areas with isopropyl alcohol (>90%).

Compare your new rear glass to the original part. You may need to transfer the fingerprint sensor or remove adhesive backings from the new part before installing.

Repair didn't go as planned? Try some [basic troubleshooting](#), or ask our [Answers community](#) for help.