



Dell Latitude E6410 CMOS Battery Replacement

This guide will instruct you on how to remove and replace the CMOS /coin-cell Battery in your Dell Latitude E6410 device

Written By: Aaron Thomas



**TOOLS:**

- [Phillips #0 Screwdriver](#) (1)

**PARTS:**

- [CMOS Battery for DELL Latitude E6410](#) (1)

Step 1 — Remove all external components



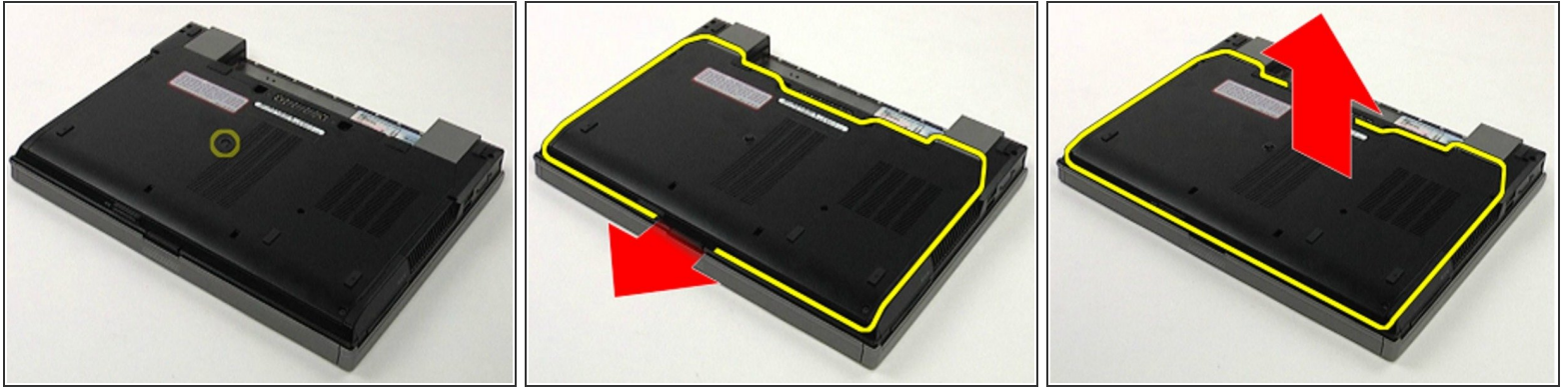
- Make sure you have removed all external components from your device (ie. USBs, ethernet, power cords, audio devices, SD cards, etc.)

Step 2 — Remove battery



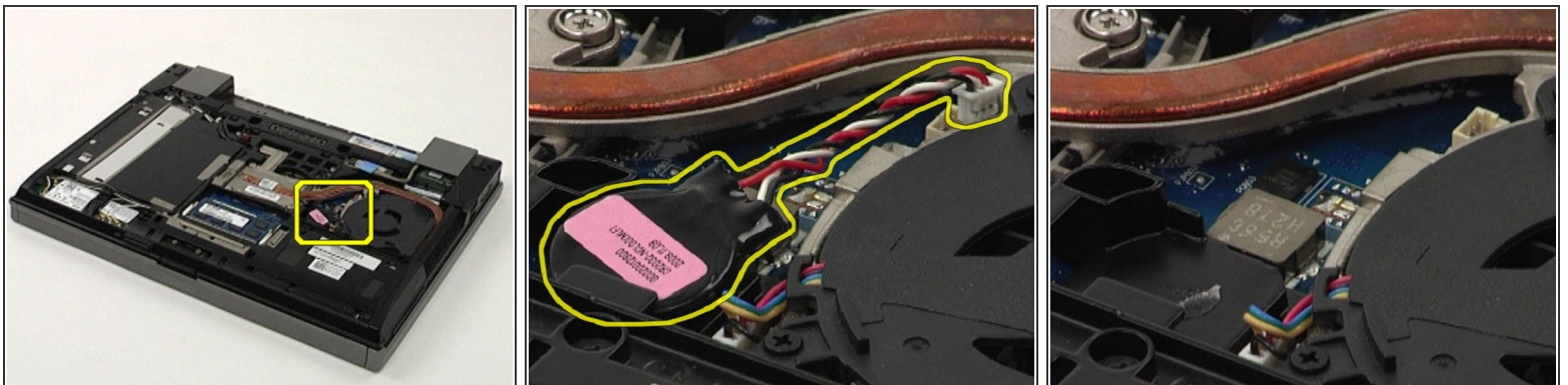
- To remove the battery, slide the latches inward, and remove the battery from the system.

Step 3 — Remove the access panel



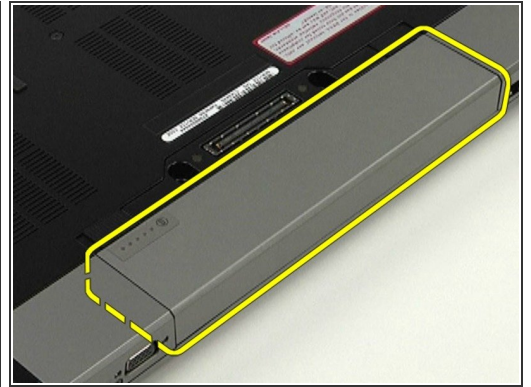
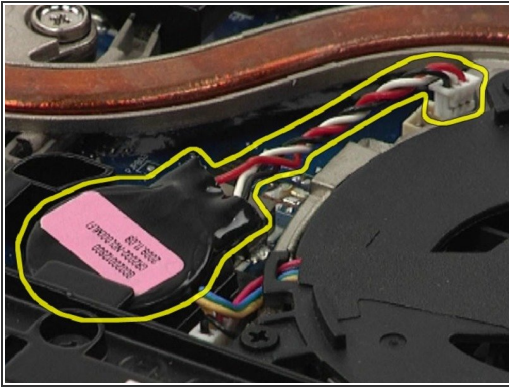
- To remove the access panel, use your screwdriver to remove the single screw in the center of the base. Then, slide the access panel toward the front of the system and lift it from the system.

Step 4 — Disconnect the coin-cell battery cable from the system board



- After removing the access panel, locate the coin cell battery. Then disconnect the battery cable from the system board and lift the coin-cell battery out of its socket to remove.

Step 5 — Replace battery.



- With your replacement battery, perform the previous steps in reverse order.

To reassemble your device, follow these instructions in reverse order.