



Huawei P8 Lite (2017) Display Replacement

How to replace a cracked or broken screen on your Huawei P8 Lite (2017).

Written By: Adriana Zwink



INTRODUCTION

Use this guide to replace a cracked or broken screen on your Huawei P8 Lite (2017).

If the frame is deformed, it's important to replace it to make sure the new screen will mount correctly and won't suffer damage from uneven pressure.

Due to the phone's design, you must remove the lithium-ion battery to access the display cables. If the battery was deformed during removal replace it with a new one—reusing a deformed battery is a potential safety hazard.

Before disassembling your phone, discharge the battery below 25%. The battery can catch fire and/or explode if accidentally punctured, but the chances of that happening are much lower if discharged.

Note: This guide instructs you to replace only the screen while leaving the original frame and motherboard in place. However, some replacement screens for this phone come pre-installed in a new frame (a.k.a. chassis), which requires a very different procedure. Make sure you have the correct part before starting this guide.

You'll need replacement adhesive to reattach components when reassembling the device.

TOOLS:

- [iOpener](#) (1)
 - [Suction Handle](#) (1)
 - [iFixit Opening Picks set of 6](#) (1)
 - [Phillips #00 Screwdriver](#) (1)
 - [Spudger](#) (1)
-

Step 1 — Apply a heated iOpener



- [Heat an iOpener](#) and apply it to the rear glass for two minutes.
- ⓘ A hair dryer, heat gun, or hot plate may also be used, but be careful not to overheat the P8 Lite —the display and internal battery are both susceptible to heat damage.

Step 2 — Create a gap



- Apply a suction cup to the rear glass, as close to the right edge as possible.
 - ① If the phone's rear glass is cracked, the suction handle may not stick. Try [lifting it with strong tape](#), or superglue the suction handle in place and allow it to cure so you can proceed.
- Pull up on the suction up with strong, steady force to create a gap.
 - ① Depending on the age of your device, this may be difficult. If you have trouble, apply more heat to further soften the adhesive and try again.
- Insert the tip of an opening pick into the gap between the rear glass and frame.

Step 3 — Slice the adhesive



- Slide the tip of the opening pick to the bottom right corner to cut the adhesive.
- Leave it there to prevent the adhesive from resealing.

Step 4



- Insert a second opening pick at the bottom right corner.
- Slide the tip of the opening pick to the top right corner to slice the adhesive.
- Leave the opening pick at its place to prevent the adhesive from resealing.

Step 5




- Insert a third opening pick at the top right corner.
- Slide it to the top left corner to cut the adhesive.
- ⓘ In case you're having trouble to cut the adhesive, reapply the [iOpener](#) for another minute to loosen it.
- Leave the opening pick at its place to prevent the adhesive from resealing.

Step 6



- Insert a fourth opening pick at the top left corner.

 Do not insert the opening pick deeper than 1 cm (1/3rd of an inch) to avoid damage the fingerprint sensor cable.

- Slide the tip of the opening pick to the bottom left corner to cut the adhesive.
- Leave the opening pick in its place to prevent the adhesive from resealing.

Step 7



- Insert a fifth opening pick at the bottom left corner.
- Slide it to the bottom right corner to cut the remaining adhesive.

 Try not to remove the rear glass yet! The fingerprint sensor is still connected to the motherboard.

Step 8 — Rotate the rear glass



- Open the P8 Lite by swinging the rear glass up from the left side, like the back cover of a book.
- Place the rear glass on the top of the battery.

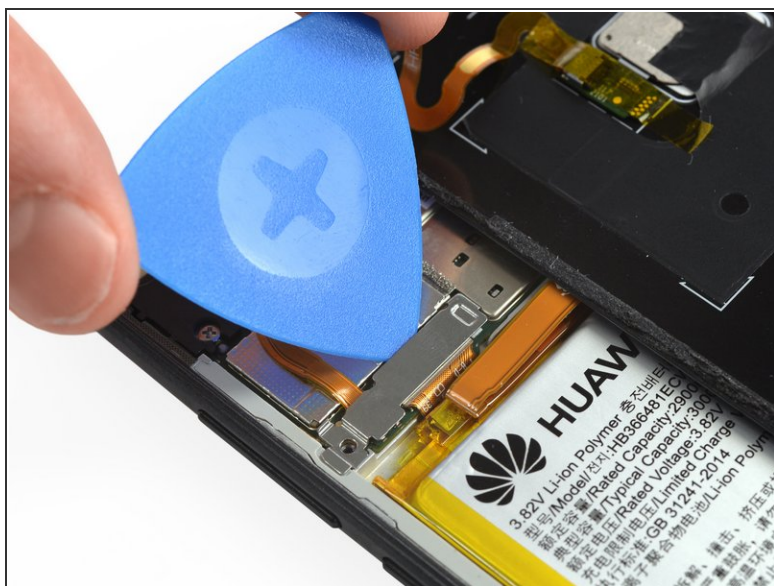
 Avoid tensioning the display cable during this procedure.

Step 9 — Unscrew the fingerprint sensor connector cover



- Use a Phillips #00 screwdriver to remove the 2.9 mm screw.

Step 10 — Remove the metal shield



- Use the tip of an opening pick to pry up and loosen the metal shield.

Step 11 — Remove the metal shield



- Use a pair of tweezers to remove the metal shield.

Step 12



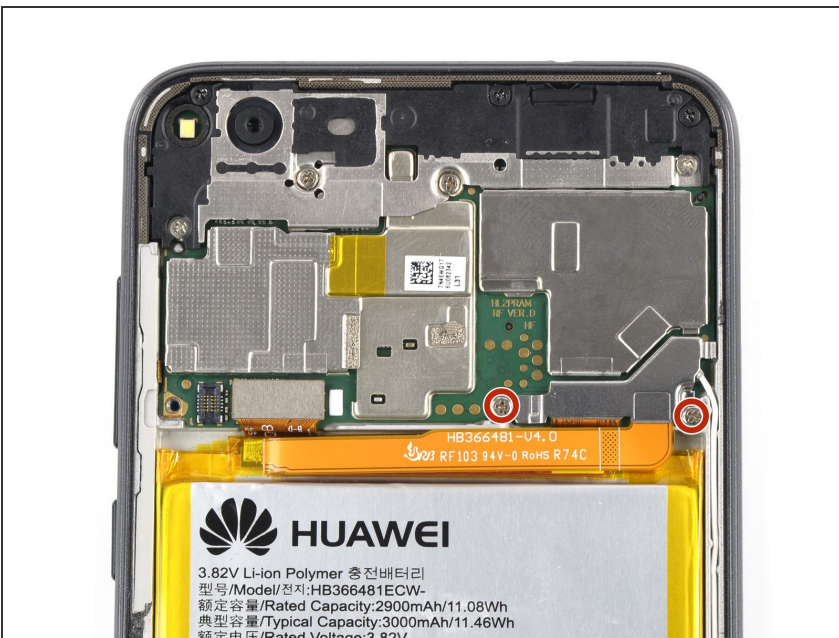
- Use a spudger to pry up and disconnect the fingerprint sensor cable.

Step 13



- Remove the rear glass.
- ★ After installing the rear glass, apply strong, steady pressure to your phone for several minutes to help the adhesive form a good bond—a stack of heavy books works well.

Step 14 — Battery



- Use a Phillips #00 screwdriver to remove the two 2.9 mm-long screws securing the battery connector shield.

Step 15 — Remove the metal shield



- Use the tip of an opening pick to pry up the battery connector shield.
- Remove the metal shield.

Step 16 — Disconnect the battery



- Use a spudger to pry up and disconnect the battery flex cable.


Step 17 — Apply a heated iOpener



- [Heat an iOpener](#) and apply it to the display to loosen the adhesive beneath the battery for two minutes.
- ⓘ A hair dryer, heat gun, or hot plate may also be used, but be careful not to overheat the P8 Lite—the display and internal battery are both susceptible to heat damage.

Step 18 — Insert an opening pick



 The interconnect cable runs under the battery on the bottom right side. Make sure not to damage the cable during the following procedure.

- Insert the wide edge of an opening pick on the bottom left corner into the gap between the battery and the frame.
- Slide the opening pick at a flat angle as far under the battery as possible. Be careful not to deform the battery.

Step 19



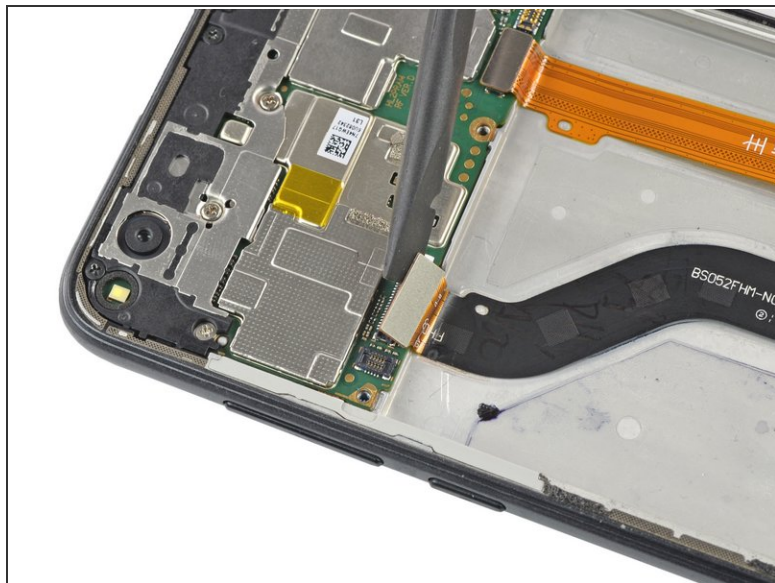
- Once the battery has slightly lifted, insert a second opening pick at the bottom left corner.
- Slide the opening pick along the edge to the left center and slide it under the battery.
- ❗ In case you're having trouble to cut the adhesive, reapply the [iOpener](#) for another minute to loosen it.
- Insert a third opening in the center of the right edge and slide it under the battery to cut the remaining adhesive.
- ⚠ Make sure not to damage the interconnect cable that runs on the right side underneath the battery.

Step 20



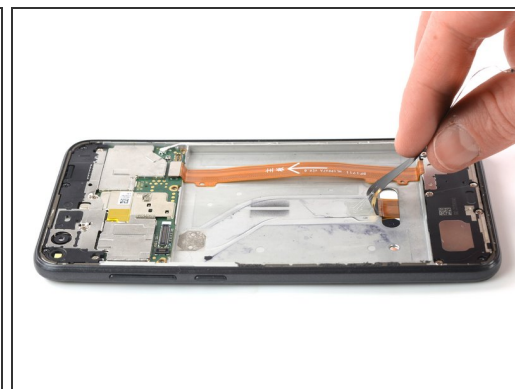
- Remove the battery.
- ⚠ Do not reinstall a damaged or deformed battery, as doing so is a potential safety hazard.
- ★ Before installing a new battery, remove any remaining adhesive from the phone, and clean the glued areas with isopropyl alcohol and a lint-free cloth.
- ★ Secure the new battery with pre-cut adhesive or double-sided adhesive tape. In order to position it correctly, apply the new adhesive into the device at the places where the old adhesive was located, not directly onto the battery. Press the new battery firmly into place.

Step 21 — Disconnect the display flex cable



- Use a spudger to disconnect the display flex cable from the motherboard.

Step 22 — Loosen the display flex cable



i The display flex cable is mildly glued down.

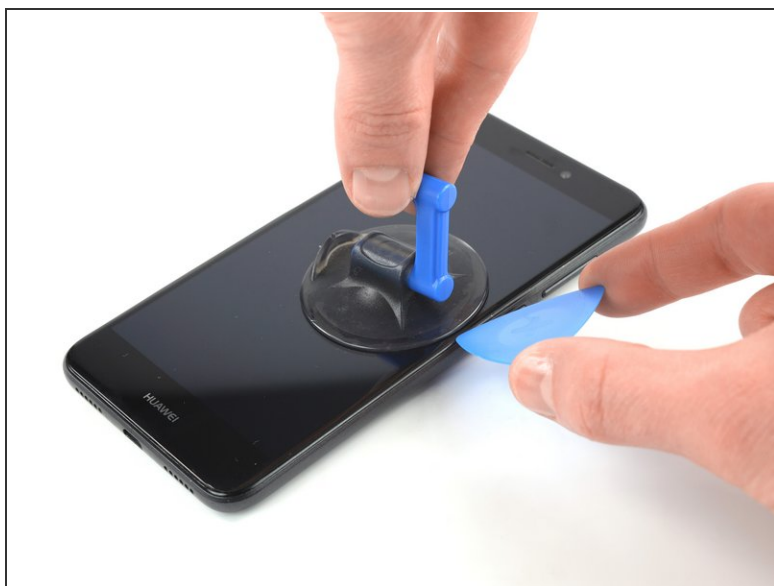
- Use your fingers to peel the display flex cable off the midframe.

Step 23 — Heat an iOpener



- [Heat an iOpener](#) and apply it to the display for two minutes.
- ⓘ A hair dryer, heat gun, or hot plate may also be used, but be careful not to overheat the P8 Lite—the display and internal battery are both susceptible to heat damage.

Step 24 — Create a gap



- Once the display is warm to the touch, apply a suction cup to the right edge of the phone.
 - ❗ If the phone's screen is cracked, the suction handle may not stick. Try [lifting it with strong tape](#), or superglue the suction handle in place and allow it to cure so you can proceed.
- Pull the suction cup upwards and insert an opening pick into the gap between the display and the frame.

Step 25



- Slide the opening pick to the bottom right corner and leave it in its place.
- ⓘ Feel free to continue to use the suction handle for a better grip or remove it.
- Insert a second opening pick at the bottom right corner and slide it to the top right corner to cut the adhesive.
- Leave the opening picks in their place to prevent the adhesive from resealing.

Step 26



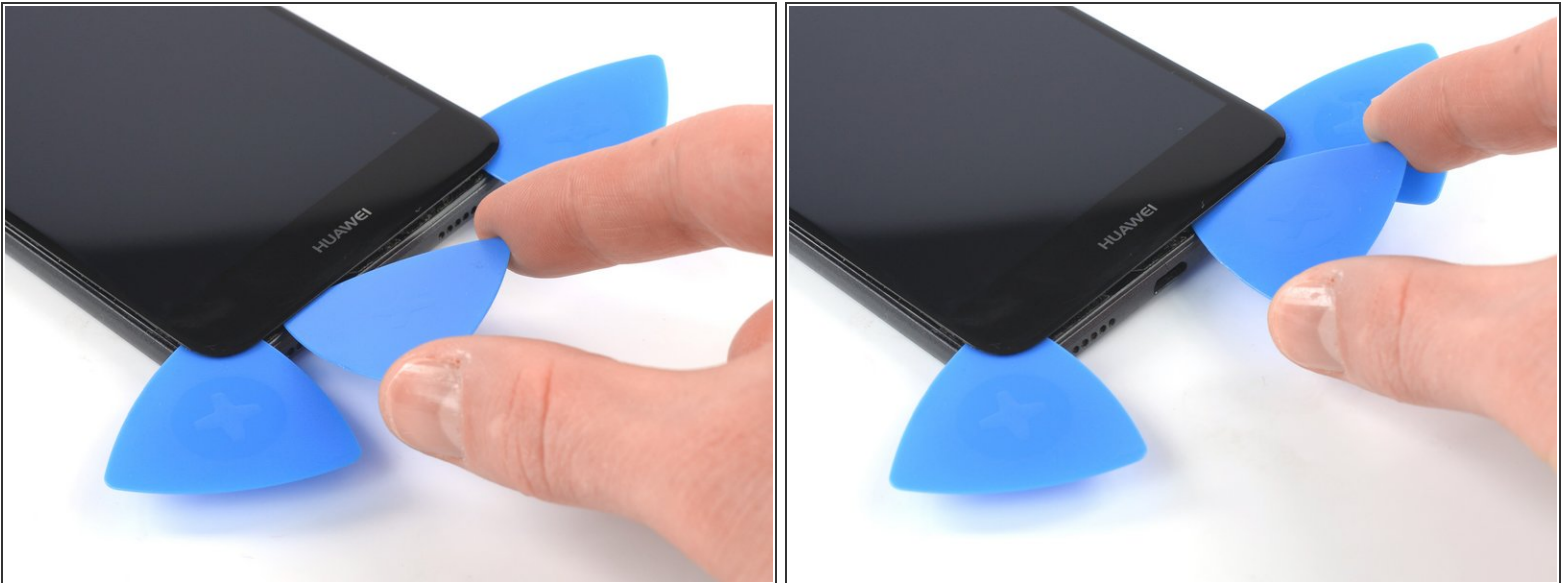
- Insert a third opening pick under the top right corner and slide it to the top left corner to cut the adhesive.
- Leave the opening pick in its place to prevent the adhesive from resealing.

Step 27



- Insert a fourth opening pick at the top left corner and slide it along the left edge to the bottom left corner to cut the adhesive.
- Leave the opening pick in its place to prevent the adhesive from resealing.

Step 28



- Insert a fifth opening pick under the bottom left corner and slide it to the bottom right corner to cut the remaining adhesive.

 Try not to remove the display yet! The display flex cable is still threaded through the frame.

Step 29



- Thread the display flex cable through the frame.
 - Remove the display.
- ✦ The best way to secure the new screen is to apply a sheet of custom-cut double-sided tape to the back of the screen.

If possible, turn on your device and test your repair before installing new adhesive and resealing.

Compare your new replacement part to the original part—you may need to transfer remaining components or remove adhesive backings from the new part before installing.

To reassemble your device, follow these instructions in reverse order. Apply new adhesive where necessary after cleaning the relevant areas with isopropyl alcohol (>90%).

Take your e-waste to an [R2 or e-Stewards certified recycler](#).

Repair didn't go as planned? Try some [basic troubleshooting](#), or ask our [Answers community](#) for help.