



Google Pixel 5 SIM Card Tray Replacement

How to replace the SIM card tray on the Google Pixel 5.

Written By: Robert Boyd



INTRODUCTION

This repair guide was authored by the iFixit staff and hasn't been endorsed by Google. Learn more about our repair guides [here](#).

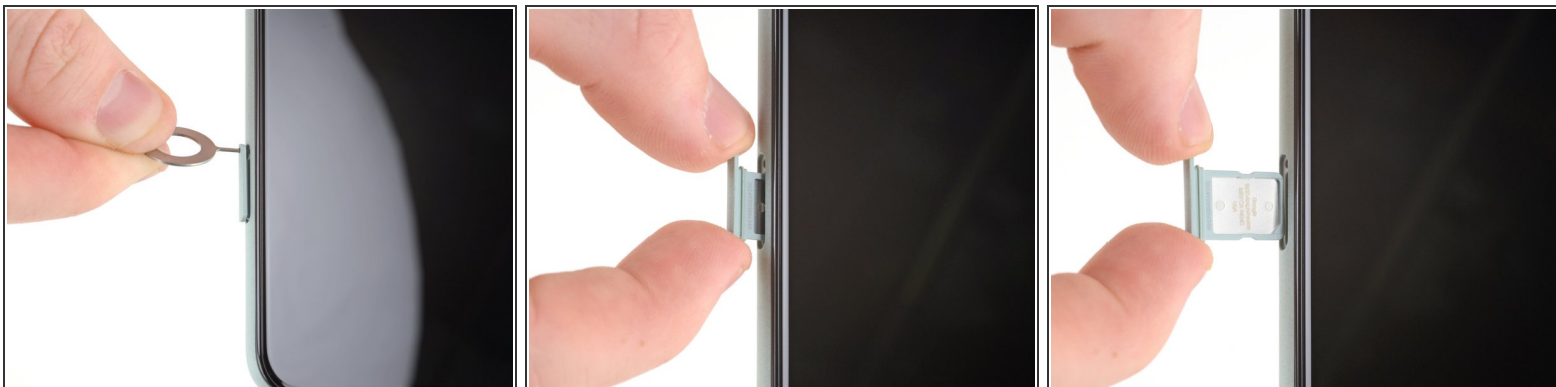
Follow this guide to replace the SIM card tray on the Google Pixel 5.



TOOLS:

- [SIM Card Eject Tool](#) (1)
-

Step 1 — Eject the SIM card tray



- Insert a SIM eject tool, bit, or straightened paper clip into the SIM card tray hole.
 - ❗ The SIM card tray is located on the left edge of the phone near the bottom.
- Press firmly to eject the SIM card tray.
- Remove the SIM card tray.

To reassemble your device, follow these instructions in reverse order.