



How to Adjust a Buttonhole Size

This guide will show you how to make a buttonhole larger or smaller.

Written By: Ilene Withers



INTRODUCTION

Do you have a shirt with one button that always comes unbuttoned? If so, you need to shorten that buttonhole.

Would you like to change the look of a garment by changing all the buttons to new ones? To do this, you may need to shorten or lengthen the buttonholes.

Adjusting buttonholes is not difficult. This guide will show you the steps to this useful skill.



TOOLS:

- [Sewing Machine](#) (1)

This is recommended but optional.

- [Sewing Needle](#) (1)

Sharps Size 9 is Ideal

- [Fabric Thread](#) (1)

All-Purpose

Color should closely match existing buttonhole.

- [Ruler](#) (1)

Sewing or 6"

- [Fabric Scissors](#) (1)

Should have sharp pointed tip.

- [Sewing Pins](#) (1)

- [Tailor's Chalk](#) (1)

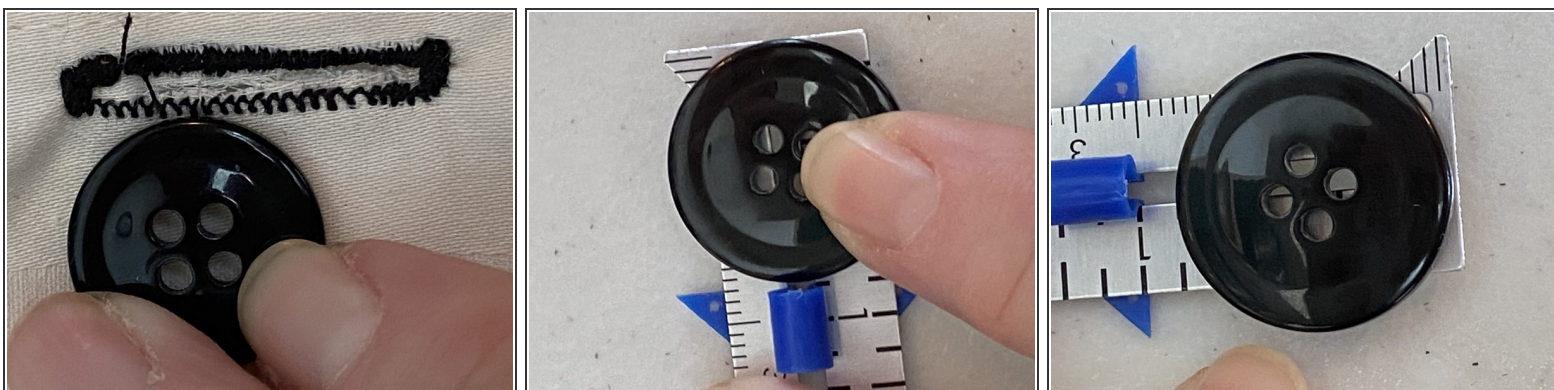


PARTS:

- [Garment Buttons](#) (1)

If you are using new buttons, buy the same number as your garment has buttonholes.

Step 1 — How to Adjust a Buttonhole Size



- i** Steps 1-3 demonstrate how to shorten a buttonhole when the button will not stay buttoned or needs to be replaced with a smaller button.
- Using the ruler, measure the button you intend to use. Add 1/8" to this measurement for ease of buttoning.

Step 2



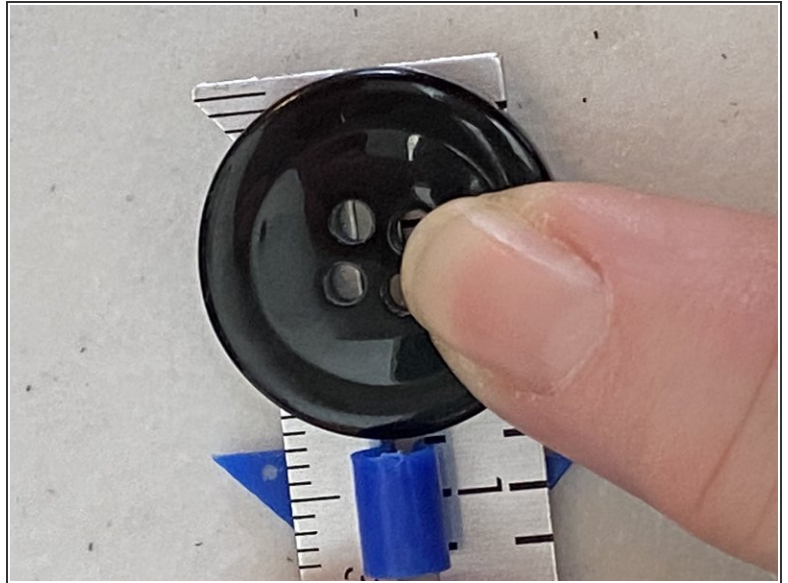
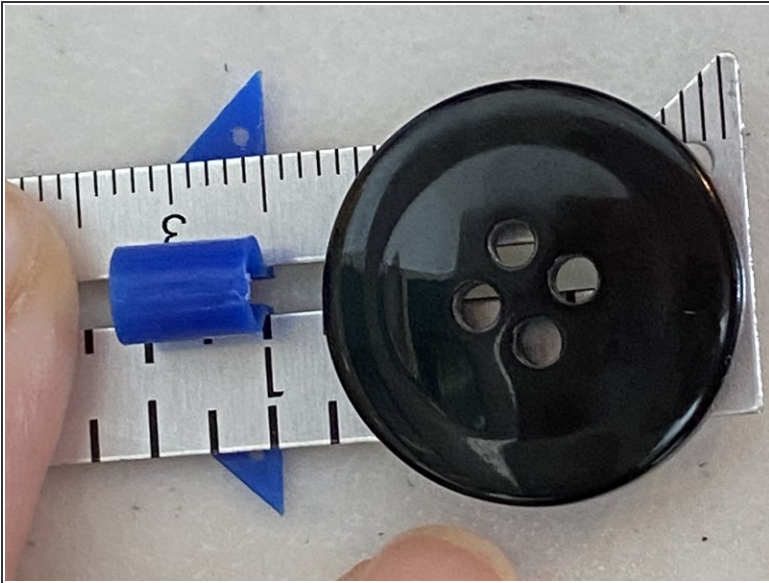
- Measure down from the top of the existing buttonhole to the length of your Step 1 measurement.
- Make a small sewing chalk mark or insert a straight pin to mark how long your adjusted buttonhole should be.

Step 3



- i Use either a sewing machine or needle and thread for this step.
 - Match the stitch width of the existing bar tack, and sew a new bar tack at the location of your chalk mark.
- i A **bar tack** is several long, narrowly spaced stitches that form the top of a T between shorter perpendicular stitches.
- Check to make sure your button fits your adjusted buttonhole well.

Step 4



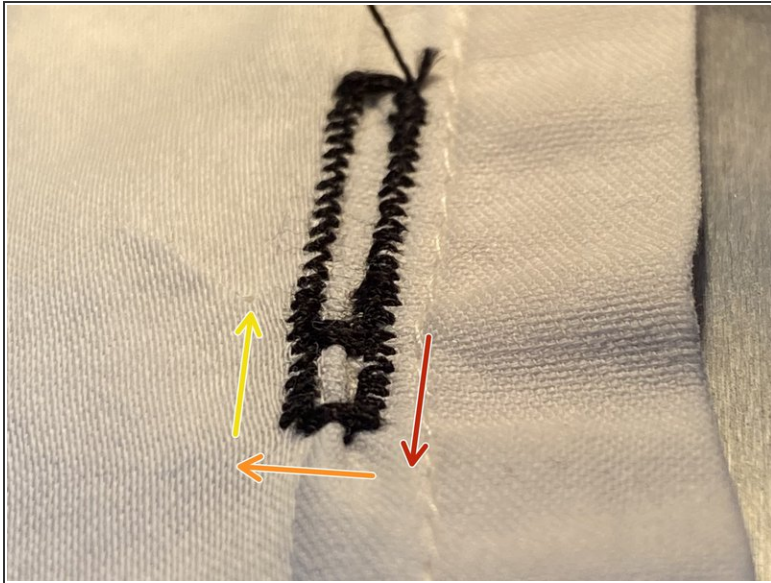
- i** Steps 4-8 demonstrate how to lengthen a buttonhole if it is too tight for your button or if you want to sew on larger buttons.
- Using the ruler, measure the button you intend to use. Add 1/8" to this measurement for ease of buttoning.

Step 5



- With the ruler, measure down from the top of the existing buttonhole to the length of your Step 4 measurement.
- Make a small sewing chalk mark or insert a straight pin on the fabric at this place.

Step 6



- Starting on the right of the existing buttonhole, stitch to your chalk mark or pin, matching the width of the original stitching.
- Stitch a new bar tack.
- ⓘ A bar tack is several long, narrowly spaced stitches that form the top of a T between shorter perpendicular stitches.
- Stitch back on your left to just past the original bar tack.
- Tie off or backstitch your thread.

Step 7



- Using the point of your scissors, cut through the original bar tack and between your new side stitching until you have reached the new bar tack.

⚠ Do not cut through your new bar tack.

Step 8



- ☒ If using the existing button, you may have to cut it off and move it slightly to be centered in the larger buttonhole and resew it on.
- Very near the place where your button was originally sewn on, center your button in your adjusted buttonhole. Using chalk or a pin, mark this location.
- Sew your button on.
- Check to make sure it fits through your adjusted buttonhole well.

A sewing machine with a buttonhole presser foot is ideal, but this project can be completed with needle and thread.